



Response of *Nodularia spumigena* to $p\text{CO}_2$ – Part 2: Exudation and extracellular enzyme activities

S. Endres^{1,2}, J. Unger³, N. Wannicke^{3,4}, M. Nausch³, M. Voss³, and A. Engel²

¹Alfred Wegener Institute for Polar and Marine Research (AWI), Am Handelshafen 12, 27570 Bremerhaven, Germany

²GEOMAR Helmholtz Centre for Ocean Research, Düsternbrooker Weg 20, 24105 Kiel, Germany

³Leibniz Institute for Baltic Sea Research (IOW), Seestrasse 15, 18119 Rostock, Germany

⁴Leibniz Institute of Freshwater Ecology and Inland Fisheries (IGB), Alte Fischerhütte 2, OT Neuglobsow, 16775 Stechlin, Germany

Correspondence to: S. Endres (sendres@geomar.de)

Received: 27 March 2012 – Published in Biogeosciences Discuss.: 26 April 2012

Revised: 5 December 2012 – Accepted: 18 December 2012 – Published: 29 January 2013

Abstract. The filamentous and diazotrophic cyanobacterium *Nodularia spumigena* plays a major role in the productivity of the Baltic Sea as it forms extensive blooms regularly. Under phosphorus limiting conditions *Nodularia spumigena* have a high enzyme affinity for dissolved organic phosphorus (DOP) by production and release of alkaline phosphatase. Additionally, they are able to degrade proteinaceous compounds by expressing the extracellular enzyme leucine aminopeptidase. As atmospheric CO_2 concentrations are increasing, we expect marine phytoplankton to experience changes in several environmental parameters, including pH, temperature, and nutrient availability. The aim of this study was to investigate the combined effect of CO_2 -induced changes in seawater carbonate chemistry and of phosphate deficiency on the exudation of organic matter, and its subsequent recycling by extracellular enzymes in a *Nodularia spumigena* culture. Batch cultures of *Nodularia spumigena* were grown for 15 days under aeration with low (180 μatm), medium (380 μatm), and high (780 μatm) CO_2 concentrations. Obtained $p\text{CO}_2$ levels in the treatments were on median 315, 353, and 548 μatm CO_2 , respectively. Extracellular enzyme activities as well as changes in organic and inorganic compound concentrations were monitored. CO_2 treatment-related effects were identified for cyanobacterial growth, which in turn influenced the concentration of mucinous substances and the recycling of organic matter by extracellular enzymes. Biomass production was increased by 56.5 % and 90.7 % in the medium and high $p\text{CO}_2$ treatment, respectively, compared to the low $p\text{CO}_2$ treatment. In total,

significantly more mucinous substances accumulated in the high $p\text{CO}_2$ treatment, reaching 363 $\mu\text{g Xeq L}^{-1}$ compared to 269 $\mu\text{g Xeq L}^{-1}$ in the low $p\text{CO}_2$ treatment. However, cell-specific rates did not change. After phosphate depletion, the acquisition of P from DOP by alkaline phosphatase was significantly enhanced. Alkaline phosphatase activities were increased by factor 1.64 and 2.25, respectively, in the medium and high compared to the low $p\text{CO}_2$ treatment. We hypothesise from our results that *Nodularia spumigena* can grow faster under elevated $p\text{CO}_2$ by enhancing the recycling of organic matter to acquire nutrients.

1 Introduction

Cyanobacteria play an important role in the productivity of the Baltic Sea and form regularly extensive blooms (Finni et al., 2001). One of the typical bloom-forming species is the filamentous *Nodularia spumigena* (Sellner, 1997), which has the physiological capacity to fix atmospheric nitrogen. The estimated annual amount of fixed nitrogen in the Baltic Sea by cyanobacteria is 180–430 Gg N and equal to the total nitrogen input from rivers (480 Gg N yr^{-1}) and atmospheric deposition (~ 200 Gg N yr^{-1}) (Larsson et al., 2001; Schneider et al., 2003). Therefore, *Nodularia* is highly important for ecosystem functions in the Baltic Sea.

Nutrient concentrations, especially nitrogen and phosphorus, are the potential limiting factors for phytoplankton growth in the ocean, with phosphorus being suggested as the

more important nutrient for long-term productivity (Tyrell, 1999). As inorganic phosphorus is depleted rapidly, a potential alternative for phytoplankton growth is the utilisation of dissolved organic phosphorus (DOP) (Björkman and Karl, 1994; Nausch, 1998a; Nausch and Nausch, 2006). Its availability may be an important factor influencing the distribution of diazotrophic cyanobacteria in the Baltic Sea (Niemi, 1979) as phosphate bioavailability controls the ability to fix N_2 (Paytan and McLaughlin, 2007). In the Baltic Sea, the DOP fraction in surface waters ranges between 0.20 to 0.23 μM in the central basin (Nausch et al., 2004) and 0.50 to 0.90 μM in the Gulf of Riga (Pöder et al., 2003), and can constitute as much as 70–100% of total phosphorus (Kononen et al., 1992; Nausch et al., 2004). This DOP pool is estimated to support 20% (range of 12–30%) of the phytoplankton production in the field (Mather et al., 2008). Hence, the ability to use this source efficiently is of great ecological importance for diazotrophs during nutrient limitation (Degerholm et al., 2006; Paytan and McLaughlin, 2007). *Nodularia* and similar species appear well adapted to the stratified and P-limited surface waters, which are predominantly found in these waters of the Baltic Sea in summer (Degerholm et al., 2006).

Gel particles play an important role in aggregation and export of organic and inorganic matter (Logan et al., 1995; Passow et al., 2001; Shipe et al., 2002; Engel et al., 2004b). These particles, consisting mainly of acidic sugars, are called transparent exopolymer particles (TEP) and can be visualised under the microscope by Alcian Blue staining. Proteinaceous particles can be stained with Coomassie Blue and are therefore referred to as Coomassie stainable particles (CSP). Both TEP and CSP are potential food sources for bacteria but also substrate to grow upon. One origin of these exopolymers in the sea is exudation of carbon compounds by phytoplankton under nutrient limitation (Passow, 2002; Engel et al., 2002a, 2004a). Relatively little is known about exudation and gel particle formation in cyanobacteria communities (Engel et al., 2002b; Engel, 2002). Changes in light intensity were shown to have an increasing effect on exudation of DON and DOC in cultures of *Nodularia spumigena*. Up to 89% of the fixed nitrogen and 53% of the fixed carbon were released during the light period (Wannicke et al., 2009). Besides exudation, various species of unicellular and filamentous cyanobacteria produce large amounts of extracellular polymeric substances consisting predominantly of polysaccharides (Otero and Vincenzini, 2004), which form a mucus layer around the cell. The function of this mucus layer and factors regulating the production, however, are not completely understood yet (Nausch, 1996; Otero and Vincenzini, 2004).

Microbes consume carbohydrates and proteins to meet their energy and nutrient requirements and to build up biomass. Therefore, they hydrolyse high molecular weight dissolved organic matter (DOM) with extracellular enzymes (Chrost et al., 1989). Highest activity rates and affinity of extracellular enzymes are usually measured towards the end

of a phytoplankton bloom (Chrost et al., 1989). While α - and β -glucosidase and aminopeptidase activity were typically found to be associated with the bacterial fraction, alkaline phosphatase activity was associated also with phytoplankton (Chrost et al., 1989). Recent studies showed that cultured, axenic strains of *Nodularia spumigena* also seem to be able to express leucine aminopeptidase to degrade proteins (Stoecker et al., 2005).

The alkaline phosphatase catalyses the hydrolytic breakdown of the PO_4^{3-} end from DOM and is expressed in response to phosphate limitation in many bacterial and phytoplankton species (Azam et al., 1983; Chrost and Overbeck, 1987; Beardall et al., 2001; Labry et al., 2005). In the Baltic Sea, alkaline phosphatase activity seems to be directly related to the abundance of heterocystous cyanobacteria (Nausch et al., 2004). Increasing phosphatase activities were determined with decreasing phosphate concentrations during *Nodularia* blooms (Huber and Hamel, 1985a, b). Cultures of *Trichodesmium* IMS101 can grow with DOP as the only source of phosphorus, suggesting that DOP should be included in estimates of P availability in surface waters (Mullolland et al., 2002).

Due to rising atmospheric $p\text{CO}_2$ the ocean pH has been decreasing constantly since the beginning of the Anthropocene – around 1800 (Zalasiewicz et al., 2008). By the year 2100, a further decrease by 0.3 units from current conditions is expected (Wolf-Gladrow et al., 1999; Feely et al., 2010). The atmospheric CO_2 concentrations have increased since glacial periods from 180 μatm to 380 μatm nowadays and we expect future values to climb to around 780 μatm by the year 2100 (Parry et al., 2007; Meehl et al., 2007; Raupach et al., 2007). The effect of ocean acidification on marine microbes and the turnover of organic matter are scarcely explored (Joint et al., 2010). During the past decades, an increase in the frequency (Sellner et al., 2003) and extension (Kahru et al., 1994) of cyanobacteria blooms has been detected and mainly attributed to global warming and eutrophication (O’Neil et al., 2012). Considering the fact that marine microbes already experience high variations in CO_2 and pH, they might have the flexibility to accommodate pH change and therefore the microbial-driven biogeochemical processes will probably not change dramatically (Joint et al., 2010). On the other hand, it has been shown that pH has a regulating effect on enzyme activities. Some hydrolytic enzymes have been shown to have their optimum at a pH below present seawater pH. Piontek et al. (2010) showed that a decrease in seawater pH as expected for the near future increases enzymatic hydrolysis rates of polysaccharides and accelerates the bacterial degradation of organic carbon. During a mesocosm study aminopeptidase activity was significantly higher at elevated $p\text{CO}_2$ (Grossart et al., 2006).

A direct coupling between inorganic carbon acquisition and organic carbon exudation was observed during incubation experiments in the central Baltic Sea (Engel, 2002). Future increase in atmospheric CO_2 may, however, not

necessarily lead to a higher exudation rate as the latter seemed to be already at its maximum under present CO_2 concentration in some ecosystems (Engel, 2002). Nevertheless, a mixed mesocosm phytoplankton community treated with high CO_2 showed significantly enhanced TEP production normalised to cell abundance (Engel et al., 2004a). Increasing $p\text{CO}_2$ may potentially affect N_2 fixation and increase the release of DOM but also the recycling of nutrients by *Nodularia*, and may therefore have consequences for nutrient cycling and the export of organic matter in the Baltic Sea. So far, there are only two studies published on the effects of increasing CO_2 on *Nodularia* spp. (Czerny et al., 2009; Wannicke et al., 2012). Yet observations on changes in extracellular enzyme activities and turnover of organic matter in cyanobacteria blooms due to ocean acidification are still lacking.

This is the second of three companion papers on a major culture experiment with *Nodularia spumigena* (Wannicke et al., 2012; Unger et al., 2012). The aim of this study was to examine the relationship between $p\text{CO}_2$ and diazotrophic growth of *Nodularia spumigena* and the related fluxes of carbon, nitrogen, and phosphorus. In particular we wanted to investigate the effect of ocean acidification on the exudation of organic matter and its subsequent recycling by extracellular enzymes in a *Nodularia spumigena* batch experiment. Enzyme activities as well as changes in organic and inorganic compound concentrations were measured over 15 days of incubation at three different $p\text{CO}_2$ levels.

2 Material and methods

2.1 Cultivation and experimental setup

Details of the experimental setup and culture conditions can be found in Wannicke et al. (2012). Axenic precultures of the cyanobacterium *Nodularia spumigena* were grown in F/2 medium in batch bottles at 15°C with a light cycle of 16:8 (cool, white fluorescent lighting, $100\ \mu\text{mol photons m}^{-2}\ \text{s}^{-1}$). The precultures were aerated for three days with premixed gases (Linde gas) of 180, 380, and 780 ppm CO_2 , representing past, present, and future atmospheric $p\text{CO}_2$, respectively. The premixed gas was filtered through seawater to increase humidity of the air to avoid water evaporation from the batch bottles. During the duration of the experiment the batch cultures were aerated for one hour per day. Aeration was not sufficient to yield the target $p\text{CO}_2$ concentrations (Wannicke et al., 2012), and carbonate chemistry may have been altered additionally by cellular carbon uptake. However, the three obtained $p\text{CO}_2$ levels differed from each other and therefore we refer to them as “low”, “medium” and “high” $p\text{CO}_2$ treatments. The low $p\text{CO}_2$ treatment ranged from 249 to 499 $\mu\text{atm CO}_2$ with a median of 315 μatm . The medium $p\text{CO}_2$ treatment reached 287 to 571 μatm with a median of 353 μatm . The high $p\text{CO}_2$

level was 395 to 630 μatm with a median of 548 μatm (Wannicke et al., 2012).

At the beginning of the experiment (day 0), 36 bottles with nutrient-depleted (below detection limit), four-month aged and sterile-filtered Baltic Sea water were inoculated with *N. spumigena* to a starting concentration of $0.8\ \mu\text{g chl } a\ \text{L}^{-1}$. To stimulate growth, $0.35\ \mu\text{M PO}_4^{3-}$ were added at day 0 and on day 3 as phosphate was already depleted in the cultures. Three bottles with sterile seawater remained as a blank to determine background concentrations of inorganic and organic compounds in the seawater. The bottles were aerated with premixed gases of the three $p\text{CO}_2$ levels, resulting in 12 replicates of each CO_2 treatment. We followed the build-up and decline of the phytoplankton blooms over a 15-day period, with sampling on days 0, 3, 9 and 15. Three replicate bottles of each CO_2 treatment were harvested at each sampling point. In the following we refer to the average concentration of the three replicates and its standard deviation for all parameters. The experiment was conducted at 23°C and the day-to-night cycle was adjusted to 16:8 h with a light intensity of $200\ \mu\text{mol photons m}^{-2}\ \text{s}^{-1}$.

2.2 Carbonate chemistry

The carbonate chemistry was determined by measuring pH and dissolved inorganic carbon (DIC) on each sampling day. The pH was measured using an electrode (Knick Mikroprozessor pH Meter 761 with Type SE 100 glass electrode), repeatedly calibrated with NBS buffer. Values of pH are given relative to total scale. DIC was analysed according to Johnson et al. (1993) directly after sampling using the colorimetric SOMMA system. We used carbon reference material provided by A. Dickson (University of California, San Diego). Analysis precision was $\pm 2\ \mu\text{mol kg}^{-1}$. $p\text{CO}_2$ and total alkalinity (TA) were calculated with CO2SYS (Lewis et al., 1998).

2.3 Analysis of inorganic and organic compounds

Determination of inorganic nutrients (NH_4^+ , NO_3^- and PO_4^{3-}) was accomplished by filtering 60 mL sample through a combusted GF/F filter and measuring colorimetrically in a spectrophotometer U 2000 (Hitachi-Europe GmbH, Krefeld, Germany) according to the method of Grasshoff et al. (1983). Ammonium concentrations remained undetectable throughout the course of the experiment.

To measure the chlorophyll *a* content (Chl *a*), 100 mL water samples were filtered onto Whatman GF/F filters and the filters were stored in liquid nitrogen or at -80°C . After thawing, they were extracted with 96 % ethanol for at least 3 h and the Chl *a* fluorescence was measured with a TURNER fluorometer (10-AU-005) at an excitation wavelength of 450 nm and an emission of 670 nm (HELCOM, 2005). The chlorophyll concentration was calculated according to the method of Jeffrey and Welschmeyer (1997).

Samples for dissolved organic carbon (DOC) and total dissolved nitrogen (TDN) analysis were filtered through combusted GF/F filters, collected in 20 mL combusted (8 h, 500 °C) glass ampoules, acidified with 80 μL of 85 % phosphoric acid and stored at 0–2 °C for 10 months. DOC and TDN concentrations were determined simultaneously in the filtrate by high temperature catalytic oxidation with a Shimadzu TOC-VCSH analyser equipped with a Shimadzu TNM-1 module. DOC and TDN concentrations were average values of quadruplicate measurements. Values of TDN were corrected for nitrate, and ammonium, and thereafter referred to as DON.

For the determination of total phosphorus (TP), 40 mL unfiltered samples were taken and stored at –20 °C up to two months. For measuring dissolved phosphorus (DP), 40 mL samples were filtered through combusted (450 °C, 4 h) Whatman GF/F filters. The thawed samples were oxidised with an alkaline peroxodisulfate solution (Grasshoff et al., 1983) in a microwave ($\mu\text{Prep-A}$) to convert organic phosphorus into dissolved inorganic phosphorous (PO_4^{3-}). The PO_4^{3-} concentration was determined photometrically ($\lambda = 885 \text{ nm}$) in a 10 cm cuvette. The detection limit was 0.01 μM . Dissolved organic phosphorus (DOP) was calculated by subtracting PO_4^{3-} from DP. Particulate organic phosphorus (POP) was calculated by subtracting DP from TP.

For analysis of particulate organic carbon (POC) and nitrogen (PON) concentration, 200 mL were filtered onto GF/F filters and stored at –20 °C. Concentrations were measured by means of flash combustion in a Carlo Erba EA 1108 at 1020 °C and a Thermo Finnigan Delta S mass spectrometer.

2.4 *Nodularia* filament and bacteria cell counts

Fifty mL samples were fixed with acetic Lugol's (KI/I₂) solution (1 % *v/v* final concentration). Within the subsequent four weeks, abundance, cell length and width of *Nodularia* sp. filaments were determined with an inverted Leica microscope at 100 \times magnification (Utermöhl, 1958). For bacterial cell counts, 4 mL samples were preserved with 100 μL formaldehyde (1 % *v/v* final concentration), shock frozen in liquid nitrogen and stored at –70 °C for three months until measurement. A stock solution of SYBR GREEN (Molecular Probes) was prepared by mixing 1 μL dye with 49 μL dimethyl sulfoxide (DMSO, Sigma Aldrich, 1 : 16 diluted). A 3 μL potassium citrate solution, 10 μL of the dye stock solution and 10 μL fluoresbrite microspheres (Polysciences) were added to 300 μL of the thawed sample and incubated for 30 min in the dark. These samples were then analysed using a flow cytometer (Facs Calibur, Becton Dickinson) following the method of Gasol and del Giorgio (2000) at medium flow rate. Calculations were done using the software program Cell Quest Pro.

2.5 Transparent exopolymer particles (TEP) and Coomassie stainable particles (CSP)

Alcian Blue stains the acidic mucopolysaccharide layers surrounding cells (mucus) as well as free aggregates of acidic sugars, so-called transparent exopolymer particles (TEP). As we cannot distinguish between these two with this method, we refer to them as “mucinous substances” (Leppard, 1995). For analysis, 15 mL samples were filtered onto 0.4 μm Nuclepore filters stained with 1 mL of a calibrated Alcian Blue solution and rinsed with several mL of ultrapure water. All samples were filtered in triplicate. Before use, the staining solution was filtered (0.2 μm) to avoid particles in the dye solution. The filters were stored at –20 °C for 2–6 weeks until spectrophotometrical analysis. The amount of Alcian Blue adsorption per sample was determined colorimetrically according to Passow and Alldredge (1995). Each filter was incubated for 3 h with 6 mL of 80 % H_2SO_4 in order to dissolve the particles, and then the solution was measured at 787 nm with an UV-Vis spectrophotometer (Shimadzu UV-1700 PharmaSpec). The total concentration of mucinous substances is given in xanthan gum equivalent (Xeq), as xanthan gum was used for calibration.

For microscopic analysis of mucinous substances size and abundance, 5 mL samples were filtered in duplicate onto 0.4 μm Nuclepore filters, stained and incubated with 1 mL of Alcian Blue for 3 s, then rinsed with distilled water. Samples for the proteinaceous gel particles (CSP) were processed identically except that they were stained and incubated with 1 mL of Coomassie Blue solution for 30 s. CSP may play an important role as organic N source for heterotrophic organisms. They were barely stained in the mucus surface coating of *Nodularia* so CSP could be considered as discrete particles during this experiment. The filters were stored on cytoclear slides at –20 °C until microscopic analysis (Engel, 2009). Slides were analysed with a light microscope connected to a color video camera with 400 \times magnification. About 2 \times 30–35 frames per slide were taken in a cross section. Particles were counted and sized semi-automatically using the software Image J (Rasband, 1997–2011). CSP size can be compared by calculating the equivalent spherical diameter (ESD) of each particle. Total mucinous substance concentration determined by Xeq was significantly related to total area of mucinous substances determined by microscopic analysis ($n = 37$, $R^2 = 0.73$, $p < 0.001$).

2.6 Extracellular enzyme activities

Fluorogenic model substrates are used to quantify potential in situ extracellular enzyme activities (Hoppe et al., 2002). The activity of extracellular enzymes (alkaline phosphatase, α - and β -glucosidase, and leucine-aminopeptidase) was determined by using 4-methylumbelliferyl (MUF)-phosphate, 4-MUF- α -glucopyranoside, 4-MUF- β -glucopyranoside, and L-leucine-4-methyl-7-coumarinylamide (MCA), respectively

(Hoppe, 1983). The fluorescent substrate analogues were added to subsamples of 180 μL volume and incubated in duplicates for 3.5–4.5 h in the dark at 25 °C. Seven different substrate concentrations ranging from 0 to 150 μM (0, 1, 5, 10, 20, 50 and 150 μM) were tested. Sample fluorescence was measured in microtiter plates with a fluorometer (FLUOstar OPTIMA, BMG Labtech, excitation 355 nm, emission 460 nm). Calibration was carried out with solutions of MUF and MCA. Detection limit for the fluorescent dye was 25 nM for MUF and 10 nM for MCA. To eliminate background fluorescence effects and to ensure that there was no significant substrate hydrolysis due to abiotic processes, control samples for every concentration of substrate added were measured with distilled water or sterilised seawater. In order to consider pH effects on the fluorescence intensity of MUF, standard solutions were adjusted to pH 7.88, 7.99, 8.0, 8.35, and 8.66. V_{max} is the maximum rate achieved by the system at saturating substrate concentrations. The activity of extracellular enzymes was calculated as the maximum hydrolysis rate (V_{max}) using the software SigmaPlot 12.0. The Michaelis–Menten constant K_{m} is the substrate concentration at which the reaction rate is half of V_{max} .

2.7 Data analysis and statistics

Calculations, statistical tests and illustration of the data were performed with the software packages Microsoft Office Excel 2003 and Sigma Plot 12.0 (Systat). Values given are the average of three replicates. To compare different $p\text{CO}_2$ treatments, an independent t-test was used. The significance level for all tests was $p < 0.05$. Data were tested for normality using the Shapiro–Wilk test. The relation between the organic parameters, nitrogen fixation rate (actual rates are presented in Wannicke et al., 2012) and enzyme activities was assessed by the Spearman Rank Order Correlation. For pairs with $R^2 > 0.5$, correlation coefficient $|R| > 0.7$ and p-values below 0.05, there is a strong significant relationship (**) between the two variables. For pairs with correlation coefficient $|R|$ between 0.3 and 0.7 and p-values below 0.05, there is a weak significant relationship (*) between the two variables. The pairs of variables with positive correlation coefficients R tend to increase together. For the pairs with negative correlation coefficients R , one variable tends to decrease while the other increases. There was one outlier in the data set (Sample 180-II on day 9), which contained double amount of PO_4^{3-} at the beginning. It was removed to ensure equal starting conditions of the replicates.

3 Results

3.1 Biomass production

Detailed information on general bloom development, nitrogen fixation rates and cell productivity is given in Wannicke et al. (2012) and will only briefly be summarised here. *Nodu-*

laria filament abundance, Chl *a* concentration, as well as POC concentrations increased over time in all treatments until day 9, which was supposed to be around the maximum of the bloom. The Chl *a* concentration rose from 0.8 $\mu\text{g Chl } a \text{ L}^{-1}$ on day 0 up to 4.6 $\mu\text{g L}^{-1}$ in the low and 7.3 $\mu\text{g L}^{-1}$ in the high $p\text{CO}_2$ treatment on day 9 (Fig. 1). We refer to this period as the “growth phase”. From day 9 to day 15, Chl *a* concentrations decreased to 1.5 μg at low and 4.4 μg at high $p\text{CO}_2$, respectively. In general, Chl *a* concentrations increased with $p\text{CO}_2$. POC concentrations increased by 81.9 $\mu\text{mol CL}^{-1}$ in the low, 128.1 $\mu\text{mol CL}^{-1}$ in the medium and 156.2 $\mu\text{mol CL}^{-1}$ in the high $p\text{CO}_2$ treatment (Fig. 2). Thus, POC increase was significantly elevated by 56.5 % and 90.7 % at medium ($p = 0,005$) and high ($p = 0.029$) $p\text{CO}_2$ treatments, respectively, compared to the low $p\text{CO}_2$ treatment. Specific growth rates (μ) per day were calculated based on changes in filament abundance, chlorophyll *a* (Chl *a*), particulate organic nitrogen (PON) and particulate organic carbon (POC) for the three $p\text{CO}_2$ treatments from day 0 to day 9. Compiled growth rates based on all parameters, presented in Wannicke et al. (2012), were significantly different between the $p\text{CO}_2$ treatments ($p < 0.05$ and $p = 0.001$). Based on POC data, growth rates were $0.0980 \pm 0.0480 \text{ d}^{-1}$ in the low, $0.1500 \pm 0.0070 \text{ d}^{-1}$ in the medium, and $0.2060 \pm 0.0200 \text{ d}^{-1}$ in the high $p\text{CO}_2$ treatments.

Heterotrophic bacteria cells counts at the start of the experiment were below the blank value (Wannicke et al., 2012). No significant growth of heterotrophic bacteria was observed over time. Bacterial cell numbers on average were $4.5 \pm 2.3 \times 10^5 \text{ cells L}^{-1}$ in the low, $2.4 \pm 2.1 \times 10^5 \text{ cells L}^{-1}$ in the medium and $4.8 \pm 2.8 \times 10^5 \text{ cells L}^{-1}$ in the high $p\text{CO}_2$ treatment (Wannicke et al., 2012, Table 2). Standard deviations were relatively high and cell numbers varied between replicates and over time, probably due to methodological constraints, but no systematic increase was observed over time. If some bacteria were attached to each other, to *Nodularia* or to gel particles, bacterial abundance determined by flow cytometry might have been underestimated. On the other hand, non-viable bacteria might have been included in the enumeration since also extracellular nucleic acids and dead, DNA-containing cells stain with the dye SYPBR green that is used for flow cytometry, as discussed in Wannicke et al. (2012).

3.2 Exudation and formation of gel particles

DOC concentrations were $303 \pm 26 \mu\text{mol L}^{-1}$ in the low, $309 \pm 21 \mu\text{mol L}^{-1}$ in the medium, and $313 \pm 36 \mu\text{mol L}^{-1}$ in the high $p\text{CO}_2$ treatment. The increase in DOC during the growth phase (day 0 to day 9) in all treatments ranged between 2 and 59 $\mu\text{mol DOCL}^{-1}$. Differences between the single $p\text{CO}_2$ treatments were not significant and differences between replicates were higher than between treatments (Fig. 3). The average DON concentration was

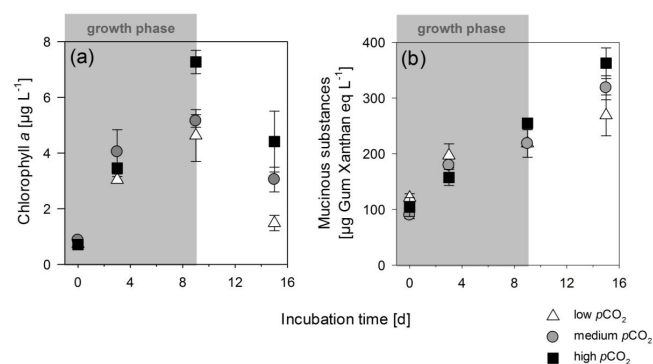


Fig. 1. Chlorophyll *a* concentration (a) and mucinous substance concentration (b) over time at low (triangle), medium (circle) and high (squares) $p\text{CO}_2$. Symbols display the mean of three replicates with standard deviation.

slightly but significantly lower in low $p\text{CO}_2$ treatment with $15 \pm 1.0 \mu\text{mol DON L}^{-1}$ compared to the high $p\text{CO}_2$ treatment with $17 \pm 1.2 \mu\text{mol DON L}^{-1}$ ($p = 0.045$). DON decreased during the growth phase in all treatments by up to $4 \mu\text{mol DON L}^{-1}$. Differences in decrease between the single $p\text{CO}_2$ treatments were not statistically significant and differences between replicates were higher than between treatments (Fig. 3). For more details on changes in DOM and C : N : P stoichiometry see Wannicke et al. (2012).

Total concentrations of mucinous substances ranged from 90 to $363 \mu\text{g Xeq L}^{-1}$. The total concentration doubled within the bloom phase from 90–120 μg on day 0 up to 218–255 $\mu\text{g Xeq L}^{-1}$ on day 9 (Fig. 1). From day 9 to day 15 of the experiment *Nodularia* biomass decreased, while mucinous substance concentration was still increasing. Highest increase was determined in the high $p\text{CO}_2$ treatments, reaching a final concentration of $363 \mu\text{g Xeq L}^{-1}$ compared to 319 μg in the medium and 269 $\mu\text{g Xeq L}^{-1}$ in the low $p\text{CO}_2$ treatment. During the growth phase significantly more mucinous substances accumulated in the high $p\text{CO}_2$ treatment compared to the low $p\text{CO}_2$ treatment ($p = 0.039$) (Fig. 2a).

Mucinous substance concentration normalised to biomass (POC) amounted to between 3.9, 2.8 and $4.5 \mu\text{g Xeq } \mu\text{mol}^{-1}$ POC on day 0 in the low, medium and high $p\text{CO}_2$ treatment and decreased over time by 49.8 %, 51.3 % and 66.8 %, respectively, during the growth phase. The high $p\text{CO}_2$ treatments showed the strongest decrease in mucinous substance concentration normalised to biomass (Fig. 2c). However, this trend was not significantly correlated to $p\text{CO}_2$. From day 9 to day 15, mucinous substance concentration per POC recovered to 3.3 μg in the low and the high $p\text{CO}_2$ treatment and 3.5 $\mu\text{g Xeq } \mu\text{mol}^{-1}$ POC in the medium $p\text{CO}_2$ treatment.

For further information on gel particle size and abundance, a microscopic analysis was performed. Most cyanobacteria filaments seemed to be coated by mucus, which was stained by Alcian Blue (Fig. 4a), while CSP was mostly observed as “free” particles in the seawater (Fig. 4c, d). Additionally, free

TEP particles were observed (Fig. 4b). Due to methodological constraints it was not possible to quantify TEP or mucus separately.

The microscopic analysis revealed an increase in CSP area during the growth phase (day 0 to day 9) in all treatments (Fig. 5a). Additionally, CSP area differed significantly between low and medium ($p = 0.042$) as well as between low and high ($p = 0.009$) $p\text{CO}_2$ treatments. CSP area increased by $57.0 \text{ mm}^2 \text{ L}^{-1}$ (= 32 %) in the low, by $331.4 \text{ mm}^2 \text{ L}^{-1}$ (= 193 %) in the medium and by $580.4 \text{ mm}^2 \text{ L}^{-1}$ (= 389 %) in the high $p\text{CO}_2$ treatment during the growth phase. CSP abundance clearly increased during the growth phase, i.e. by 355 %, 174 % and 148 % in the low, medium and high $p\text{CO}_2$ treatment, respectively. Variability between replicates was high (standard deviation ranged between 19 % and 78 %). The average ESD of CSP differed significantly between low and high $p\text{CO}_2$ treatment ($p = 0.032$). During the growth phase, CSP size decreased by $0.84 \pm 0.15 \mu\text{m}$ in the low and $0.22 \pm 0.27 \mu\text{m}$ in the medium $p\text{CO}_2$ treatment, while in the high $p\text{CO}_2$ treatment average ESD of CSP increased by $0.47 \pm 0.45 \mu\text{m}$ (Fig. 5c). The area covered by filaments was calculated from average filament length, width and abundance in each replicate. On day 0, filament area ranged between 131.3 and $171.6 \text{ mm}^2 \text{ L}^{-1}$ and increased up to 615.3, 833.1 and $1264.4 \text{ mm}^2 \text{ L}^{-1}$ in the low, medium and high $p\text{CO}_2$ treatment, respectively (Fig. 5a). The increase in filament area was significantly different between low and high as well as between medium and high $p\text{CO}_2$ treatments ($p = 0.014$). The increase in filament numbers was significantly different between medium vs. high and low vs. high $p\text{CO}_2$ treatment ($p < 0.001$). Cyanobacteria abundance increased by 134 % in the low, 241 % in the medium and 753 % in the high $p\text{CO}_2$ treatment (Fig. 5b).

3.3 Enzyme activities and recycling of organic matter

To determine the turnover of organic matter due to enzymatic cleavage outside the cyanobacterial cells, extracellular enzyme activities were measured in all samples. Enzyme activities at the start of the experiment were low and increased over time in all treatments.

The turnover of the DOP pool can be assessed through the measurement of the activity of the P-specific enzyme alkaline phosphatase (Mather et al., 2008). Alkaline phosphatase activity (APA) ranged between 62.9 and $93.6 \text{ nmol L}^{-1} \text{ h}^{-1}$ (V_{max}) on day 0 and increased by factor 10 until day 9 (Fig. 6). Afterwards activities remained constant or decreased slightly. Highest increase in alkaline phosphatase activity was observed in the high $p\text{CO}_2$ treatment with $958.23 \text{ nmol L}^{-1} \text{ h}^{-1}$ on day 9.

K_m values of the alkaline phosphatase ranged between 0.6 and $0.9 \mu\text{M}$ at the beginning of the experiment and increased up to $2.2 \mu\text{M}$ in the low, $3.9 \mu\text{M}$ in the medium and $4.9 \mu\text{M}$ in the high $p\text{CO}_2$ treatment (Table 1). As the K_m values

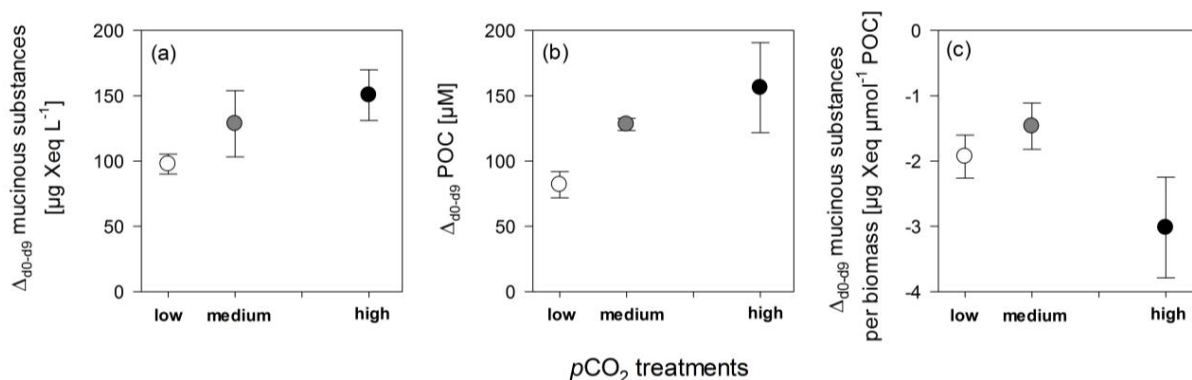


Fig. 2. Comparison of biomass production and accumulation of mucinous substances during the growth phase (day 0 to day 9). Symbols display the mean of three replicates with standard deviation.

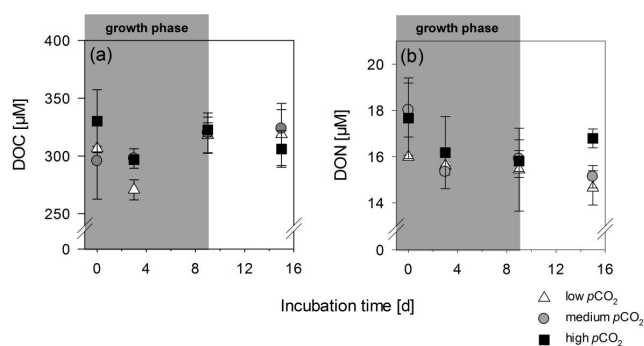


Fig. 3. DON and DOC concentrations over time at low (triangle), medium (circle) and high (squares) $p\text{CO}_2$. Symbols display the mean of three replicates with standard deviation.

of the alkaline phosphatase increased with increasing $p\text{CO}_2$, the substrate affinity of the enzyme decreased.

APA showed significantly negative correlation with PO_4^{3-} concentration (Table 2). On the third day of the experiment PO_4^{3-} was depleted, so the cells were likely P limited. Fastest decrease and hence uptake of PO_4^{3-} was observed at high $p\text{CO}_2$. From day 3 onwards, there was a net loss in DOP in all treatments (Fig. 7a). The net consumption of DOP differed between CO_2 treatments with $0.06 \mu\text{M}$ at low and $0.15 \mu\text{M}$ at high $p\text{CO}_2$, but differences were not significant due to high variations between replicates (Fig. 7b).

Activities of α - and β -glucosidases remained very low during the whole experiment, but increased slightly toward the end of the experiment (Table 3). On day 0, glucosidase activities remained below the detection limit. Highest activities were measured on day 15, ranging between $15.5\text{--}18.8 \text{ nmol L}^{-1} \text{ h}^{-1}$ for α -glucosidase and $16.1\text{--}18.7 \text{ nmol L}^{-1} \text{ h}^{-1}$ for β -glucosidase. Variation between replicates was higher than between treatments. Glucosidase activities are usually assigned to heterotrophic bacteria which degrade organic carbon compounds. Therefore, bacte-

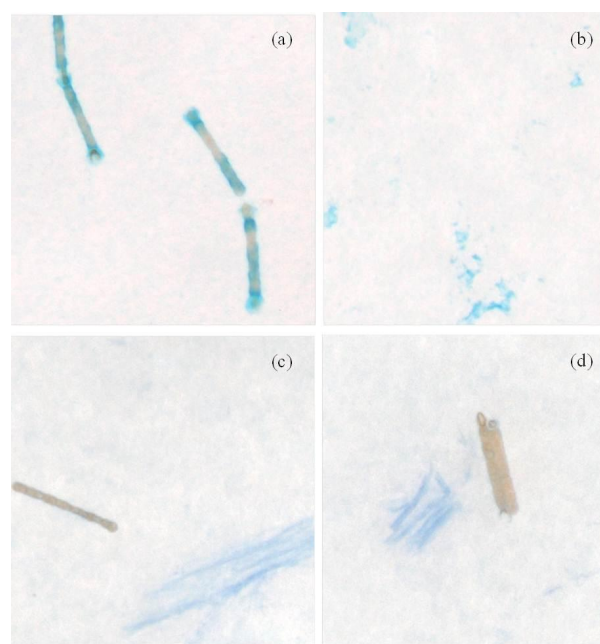


Fig. 4. Microscopic view of *Nodularia spumigena* cultures covered with a mucus coating (a), stained TEP (b), and CSP (c, d).

rial cell-specific activities were calculated for both glucosidases (Table 3). Standard deviations were high due to high variability in bacterial cell counts between the replicates. Cell-specific activities increased over time in all treatments, with highest increase in the medium $p\text{CO}_2$ treatment. This was mainly due to a decrease in bacterial abundance over time in this treatment, while in the low and high $p\text{CO}_2$ treatments bacterial cell numbers increased slightly.

No leucine aminopeptidase (LAP) activity was detectable on day 0 ($< 10 \text{ nmol L}^{-1} \text{ h}^{-1}$) but activities increased during the growth phase up to 105.17 , 241.21 and $168.04 \text{ nmol L}^{-1} \text{ h}^{-1}$ in the low, medium and high $p\text{CO}_2$ treatment, respectively (Fig. 8). Highest activities

Table 1. Phosphatase activity characteristics: V_{max} is the maximum rate achieved by the system at saturating substrate concentrations in nmol per litre and hour; the Michaelis–Menten constant K_m is the substrate concentration in μM at which the reaction rate is half of V_{max} . $R^2 > 0.97$; substrate concentrations ranged from 1–150 μM ; number of substrate concentrations used for each regression = 7.

		$p\text{CO}_2$ treatment			
		low	medium	high	
Day 0	V_{max}	$\frac{\text{nmol}}{\text{L}\times\text{h}}$	76.7 ± 5.8	93.6 ± 4.4	62.9 ± 2.6
	K_m	μM	0.6 ± 0.4	0.9 ± 0.3	0.7 ± 0.2
Day 9	V_{max}	$\frac{\text{nmol}}{\text{L}\times\text{h}}$	419.5 ± 17.0	693.2 ± 36.8	958.2 ± 54.5
	K_m	μM	2.2 ± 0.5	3.9 ± 1.0	4.9 ± 1.2

Table 2. Correlation of alkaline phosphatase activity (APA) with biomass of filamentous cyanobacteria (POC, Chl *a*), PO_4^{3-} , DOP, $p\text{CO}_2$, pH, N_2 fixation, and bacterial cell counts ($n = 36$, except for PO_4^{3-} ($n = 35$) and N_2 fixation ($n = 32$); R = correlation coefficient). Correlation level is marked as * for low significance ($0.03 < |R| < 0.7$, $p < 0.05$), as ** for strong significance ($|R| > 0.7$, $p < 0.05$), and nc: for no correlation.

Parameter	Correlation coefficient R	Correlation
AP activity vs.		
PO_4^{3-}	−0.73	**
DOP	−0.64	*
POC	0.86	**
Chl <i>a</i>	0.73	**
$p\text{CO}_2$	−0.55	*
pH	0.55	*
N_2 fixation rate	−0.65	*
Bacterial cell number	0.13	nc

were measured with 268.0, 375.6 and 244.6 $\text{nmol L}^{-1} \text{h}^{-1}$ on day 15 (Table 3). Bacterial cell-specific activities could not be calculated for leucine aminopeptidase as there is no possibility to distinguish between enzymes that are produced by cyanobacteria and heterotrophic bacteria. No significant correlation was found between APA (Table 2) or LAP (Table 4) activity and bacterial cell numbers, but both showed a significantly positive correlation with cyanobacteria biomass (POC, Chl *a*) and a significantly negative correlation with N_2 fixation rates (Table 4). Correlation between both enzymes and $p\text{CO}_2$ or pH was low.

At the end of the experiment, cyanobacteria cells were filtered out (2.7 μm GF/D filter). Extracellular enzymes in the medium, however, cannot be removed by this filtration. We determined extracellular enzyme activities of the filtrate and found that 1–2 % of the APA and 2–59 % of the LAP activity remained. Summarising our results, we can say that (1) AP was mainly attached to *Nodularia* cell surface, (2) LAP was mainly released to the medium, (3) degradation of DOP was

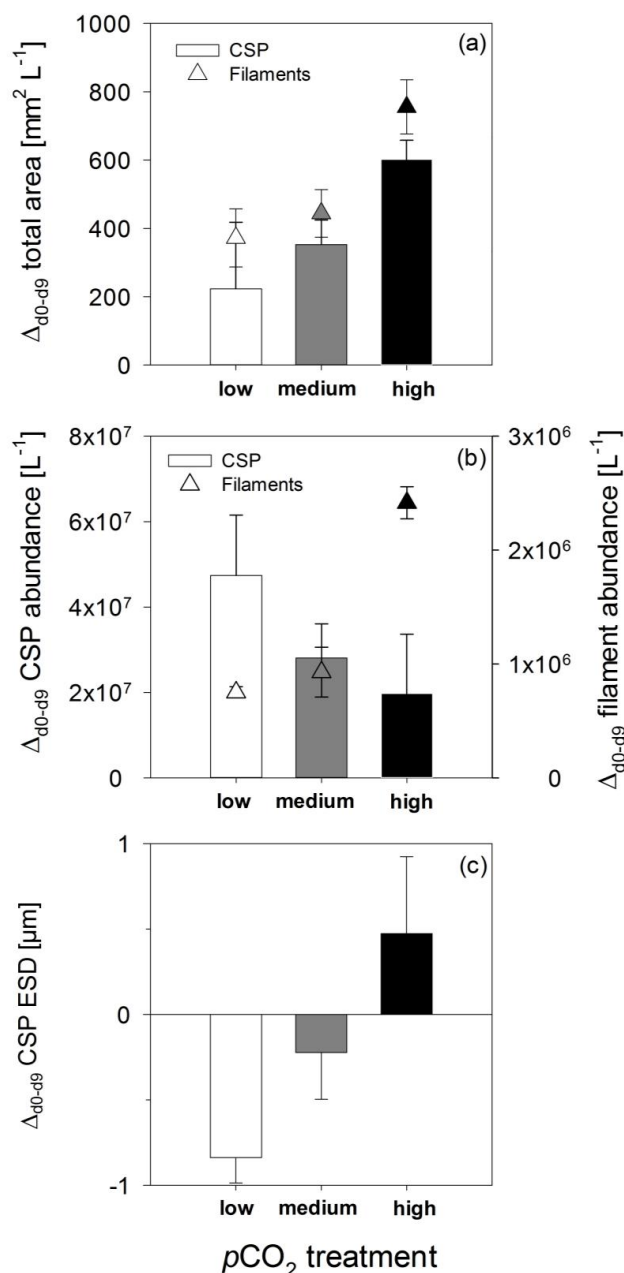


Fig. 5. Variation of the filaments and CSP during the growth phase (day 0 to day 9) in the low (white), medium (grey) and high (black) $p\text{CO}_2$ treatments: (a) total area of the filaments and CSP; (b) filament and CSP abundance; (c) equivalent spherical diameter (ESD) of CSP. Symbols and bars display the mean of three replicates with standard deviation.

driven by *Nodularia* while heterotrophic degradation of DOP was negligible, and (4) we cannot ascribe LAP activity solely to *Nodularia spumigena*. Heterotrophic bacteria might also have contributed to LAP to a certain degree although they did not build up biomass. Heterotrophic bacteria attached to the filaments may be responsible for the slight increase in

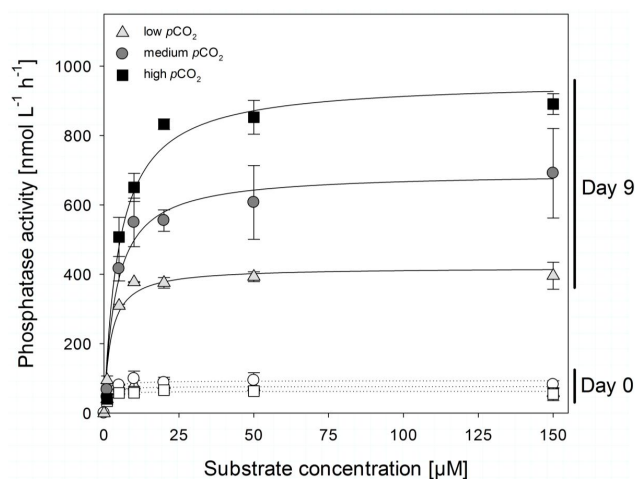


Fig. 6. Total alkaline phosphatase activity at day 0 and day 9 of low (triangle), medium (circle) and high (square) $p\text{CO}_2$ treatments. Symbols display the mean of three replicates with standard deviation.

glucosidase activity towards the end of the experiment and also for some percentage of LAP activity.

4 Discussion

The aim of this study was to investigate the effect of CO_2 -induced changes in seawater carbonate chemistry on the exudation of organic matter and its subsequent recycling by extracellular enzymes in a *Nodularia spumigena* culture. *Nodularia spumigena* growth was induced by adding phosphate on day 0 and day 3. The growth peak occurred simultaneously around day 9 in all treatments. Afterwards cell numbers declined since phosphorus was depleted. Three CO_2 conditions were applied by aerating the cultures with 180 ppm, 380 ppm and 780 ppm CO_2 . Obtained $p\text{CO}_2$ values were on median 315 μatm in the low, 353 μatm in the medium, and 548 μatm in the high $p\text{CO}_2$ treatment (Wannicke et al., 2012). In general, $p\text{CO}_2$ had a stimulating effect on *Nodularia spumigena* growth and N_2 fixation (Wannicke et al., 2012). These findings are in accordance with earlier findings suggesting growth and POC production of cyanobacteria are increased by elevated $p\text{CO}_2$ (Hutchins et al., 2007; Barcelos e Ramos et al., 2007; Kranz et al., 2010). Findings in our study are showing increased cyanobacterial growth is in turn influencing exudation, nutrient uptake and recycling of organic matter by extracellular enzymes.

4.1 Exudation and formation of gel particles by *Nodularia spumigena*

Highest changes in mucinous substance concentration were observed at high $p\text{CO}_2$ levels (Fig. 2). Cells of *Nodularia spumigena* are covered by a mucus surface coating (Nausch,

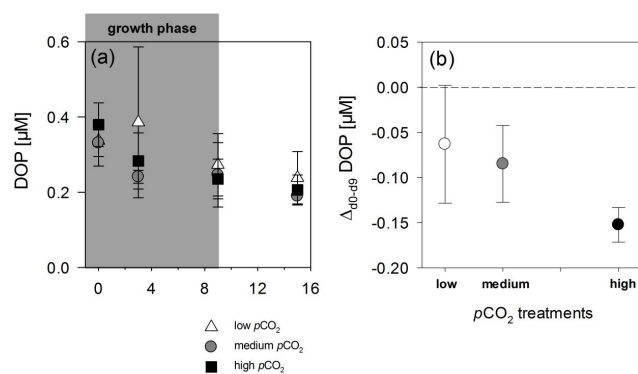


Fig. 7. DOP concentration over time at low (triangle), medium (circle) and high (squares) $p\text{CO}_2$ (a) and changes from day 0 to day 9 (b). Differences between treatments are not significant. Symbols display the mean of three replicates with standard deviation.

1996; Engel et al., 2002b) that includes acidic mucopolysaccharide and is therefore stained by Alcian Blue. Thus, an increased biomass production in the high $p\text{CO}_2$ treatment leads to apparently higher mucinous substance concentrations. Field measurements revealed similar concentrations in the Baltic Sea as those found in our study (Engel et al., 2002b). In our study, when the cyanobacteria bloom declined, mucinous substance concentrations still increased (Fig. 1); this was pronounced at high $p\text{CO}_2$. In accordance with the accumulation of mucinous substances, the increase in POC and Chl *a* concentration was significantly higher with increasing $p\text{CO}_2$ during the growth phase (Fig. 2). Yet, the ratio of mucinous substances to POC concentration was decreasing during the growth phase and increasing afterwards. This indicates that biomass production was more stimulated than carbon exudation and mucus production during the first nine days of the incubation. As growth slowed down and filament numbers decreased, more carbon was released either by active exudation or cell lysis. Therefore, our conclusion is that cell-specific production of mucinous substances is not effected by CO_2 but due to higher biomass, as we found more mucinous substances in the high $p\text{CO}_2$ treatments.

Due to methodological constraints, we cannot discriminate between acidic polysaccharides contained in TEP and in mucus. While TEP is formed by coagulation and aggregation of exuded DOC, large mucopolysaccharide molecules are released by cells and coagulate in the mucus layer (Nausch, 1996). It has been proposed that the mucus layer has the function to protect the autotrophic cells against degradation by heterotrophic bacteria and help the cells to aggregate (O'Neil and Roman, 1992). Thus, it would be interesting to investigate in further studies which factors influence the production of mucus and to quantify the amount per cell. For heterotrophic bacteria it is known that maximal extracellular polymeric substance production occurs under nutrient limitation in the presence of an excess carbon source

Table 3. Glucosidases and leucine aminopeptidase activities at different $p\text{CO}_2$ (V_{max} and standard deviation; $n = 3$) on day 15 (= day of highest activities).

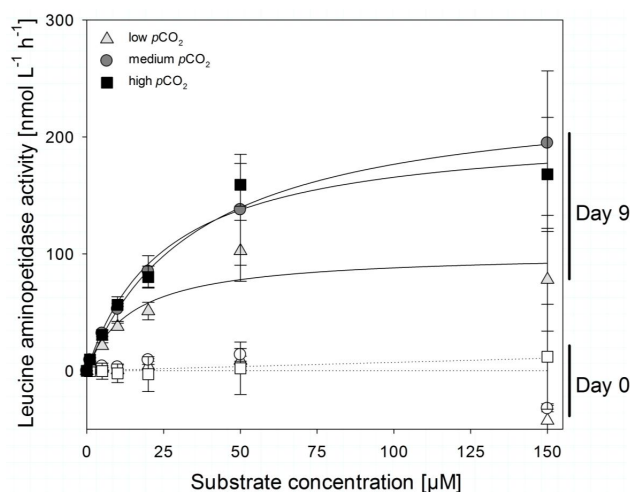
Enzyme			$p\text{CO}_2$ treatment		
			low	medium	high
α -glucosidase	total	$\frac{\text{nmol}}{\text{L}\times\text{h}}$	15.6 ± 2.8	15.5 ± 2.7	18.8 ± 7.9
	per cell	$\frac{\text{amol}}{\text{L}\times\text{h}}$	28.5 ± 19.9	77.6 ± 22.6	46.9 ± 51.2
β -glucosidase	total	$\frac{\text{nmol}}{\text{L}\times\text{h}}$	18.7 ± 2.4	16.1 ± 2.9	18.1 ± 7.1
	per cell	$\frac{\text{amol}}{\text{L}\times\text{h}}$	33.0 ± 21.1	81.4 ± 14.7	42.9 ± 44.7
leucine aminopeptidase	total	$\frac{\text{nmol}}{\text{L}\times\text{h}}$	268.0 ± 133.8	375.6 ± 60.7	244.6 ± 58.2

Table 4. Correlation of leucine aminopeptidase activity with biomass of filamentous cyanobacteria (POC, Chl *a*), dissolved inorganic and organic P, $p\text{CO}_2$, pH, N_2 fixation and bacterial cell counts ($n = 36$, except for NO_3 , DON ($n = 35$) and N_2 fixation ($n = 32$); R = correlation coefficient). Correlation level is marked as * for low significance ($0.03 < |R| < 0.7$, $p < 0.05$) as ** for strong significance ($|R| > 0.7$, $p < 0.05$), and nc: for no correlation.

Parameter	Correlation coefficient R	Correlation
LAP activity vs.		
NO_3	-0.46	*
DON	-0.34	*
POC	0.71	**
Chl <i>a</i>	0.52	*
$p\text{CO}_2$	-0.63	*
pH	0.64	*
N_2 fixation rate	-0.73	**
Bacterial cell counts	0.03	nc

(Sutherland, 1985). In *Nostoc*, a filamentous N_2 -fixing freshwater cyanobacterium, extracellular polymeric substances serve as a sink for the excess fixed carbon under unbalanced C:N metabolism (Otero and Vincenzini, 2004). This mucus production happens especially under high $p\text{CO}_2$ conditions, where the potential rate of CO_2 fixation exceeds that of N_2 fixation. In our study, ratios of fixed CO_2 to fixed N_2 were higher than the Redfield ratio with maximum values in the medium $p\text{CO}_2$ treatment (Wannicke et al., 2012), which does not suggest potential higher production of mucus in the high $p\text{CO}_2$ treatments. Hence, we suggest that principally more TEP, and not mucus, is formed at higher $p\text{CO}_2$ after growth decelerated.

In contrast to TEP, CSP are barely stained in the mucus surface coating of *Nodularia*, so CSP can be considered as discrete, protein-containing particles during this experiment. CSP area was significantly positive correlated with $p\text{CO}_2$. CSP abundance increased over time in all treatments with highest increase in the low $p\text{CO}_2$ treatment. The average size of the individual CSP decreased at low and medium $p\text{CO}_2$

**Fig. 8.** Aminopeptidase activities on day 0 and day 9 of low (triangle), medium (circle) and high (square) $p\text{CO}_2$ treatments. Symbols display the mean of three replicates with standard deviation.

but increased at high $p\text{CO}_2$ (Fig. 5). This indicates that CSP were possibly degraded in the low and the medium $p\text{CO}_2$ treatment to more but smaller particles while more material was aggregating to bigger particles in the high $p\text{CO}_2$ treatment. This might be explained by increasing stickiness and changing composition of the organic matter and especially by a higher concentration of acidic sugars (Allredge et al., 1993; Engel et al., 2004a), which could also hint towards the formation of free TEP.

Transferred to the field, an increase in gel particles would change the aggregation of filaments and the export of organic matter towards deeper layers of the ocean. Additionally, it may also effect bacterial growth as mucus is a suitable substrate for marine bacteria. However, the composition changes of organic matter, especially sugars and amino acids, under elevated $p\text{CO}_2$ need to be investigated more in detail to proof this assumption.

4.2 Production and subsequent recycling of dissolved organic matter by extracellular enzymes

Some studies propose that N_2 fixation and subsequent release of DON may be a mechanism to cope with excess light energy on a short timescale (Lomas et al., 2000; Wannicke et al., 2009). So far, no report on the effect of $p\text{CO}_2$ on DON release exists, while exudation of DOC was shown to be stimulated with increasing $p\text{CO}_2$ (Borchard and Engel, 2012). In the present study, DOC concentrations slightly increased in all treatments during the growth phase, while DON and DOP concentrations decreased (Figs. 3 and 7). Our results indicate that the algae were releasing DOC to the seawater but we cannot confirm a stimulating effect of elevated $p\text{CO}_2$ on DOC exudation. In contrast, DON concentrations decreased, which may be explained by enzymatic degradation to acquire nitrogen. As CSP area was increasing during our experiment and with $p\text{CO}_2$, the DON loss may also be explained by aggregation processes to CSP. The growth of *Nodularia spumigena* after phosphate depletion on day 3, as well as the continuing POP formation between days 3 to 15 (Unger et al., 2012), indicated the utilization of DOP as organic source for phosphorus. Further aspects of changes in DOM and stoichiometry of particulate organic matter are discussed in Wannicke et al. (2012). Unger et al. (2012) describe in detail changes in the turnover of P and the composition of the P pool in our study.

Different compounds of organic matter may be released by primary producers under elevated $p\text{CO}_2$ but also extracellular enzymes may modulate the composition and properties of organic matter. To determine the turnover rates of organic matter due to enzymatic cleavage, extracellular enzyme activities of four key enzymes in carbon and nutrient cycling (alkaline phosphatase, α - and β -glucosidase, and leucine aminopeptidase) were followed over time in all treatments. Enzyme activities at the start of the experiment were low and increased over time in all treatments.

Leucine aminopeptidase is a major enzyme in microbial degradation of organic matter. Most of its activity was found to be associated with particles (Hoppe et al., 2002). *Nodularia spumigena* is able to express leucine aminopeptidase to degrade proteins (Stoecker et al., 2005) and to acquire amino acids. In terms of magnitude, LAP activities determined during this study are in the range of those previously measured in the Baltic Sea (Nausch, 1998b). Nausch and co-workers determined an average activity of $263.1 \pm 128.4 \text{ nmol L}^{-1} \text{ h}^{-1}$ in autumn in the Pomeranian Bight. In our study, leucine aminopeptidase activity (LAP) positively correlated with cyanobacterial biomass and negatively with N_2 fixation rates (Table 4). N_2 fixation decreased over time in all treatments while LAP activity increased. In the end of the vegetation period, senescent algae exude polymeric substances, such as proteins, which have to be enzymatically cleaved before uptake (Hoppe et al., 2002). This might explain the temporal increase in leucine aminopeptidase activity in our study

especially when *Nodularia* stopped growing and filament numbers decreased. We conclude that *Nodularia* might have changed their N acquisition strategy from N_2 fixation towards enzymatic degradation of DOM over time.

Enzyme activities may respond quickly to changes in pH but also in substrate availability and their kinetics are modified to benefit best from environmental conditions. In this context, it is important to distinguish between direct $p\text{CO}_2$ - and pH-effects on microbial activity from effects induced by CO_2 -related changes in autotrophic organic matter production. Piontek et al. (2010) suggest that rates of enzymatic hydrolysis by marine glucosidase assemblage are not at their maximum at present-day seawater pH. Our results show an indirect effect of increasing $p\text{CO}_2$ on LAP activities due to increased cyanobacterial growth. Correlation between LAP activity and $p\text{CO}_2$ was low. However, a direct pH effect could, in theory, have been masked by differences in the quantity or nature of enzymes and their substrates, but such effects cannot be detected with the experimental methods used here. This is in good accordance with previous results from a mesocosm study where increasing $p\text{CO}_2$ changed the photosynthetic production of dissolved and particulate organic matter and therefore increased enzyme activities (Grossart et al., 2006).

In our study, initial PO_4^{3-} concentrations were below $0.5 \mu\text{M}$ and APA was negatively correlated to PO_4^{3-} concentration over time (Table 2). It is well documented that under P-limiting conditions, *Nodularia spumigena* has a high uptake affinity for DOP by production and release of alkaline phosphatase (Nausch, 1998a; Wu et al., 2012). A direct relationship between intracellular PO_4^{3-} concentration and APA was shown in Huber and Hamel (1985a) and indicated that cellular rather than external phosphorus sources controlled APA. A threshold of APA around $1 \mu\text{M PO}_4^{3-}$ was defined (Nausch, 1998a). In terms of magnitude, APA determined during this study is comparable with data given by Nausch (1998a) for the Baltic Sea ($5\text{--}550 \text{ nM h}^{-1}$). We conclude that *Nodularia* expressed more alkaline phosphatase to acquire phosphorus from organic sources when PO_4^{3-} concentrations declined.

We found increased APA by \sim factor 1.64 and 2.25 in the medium and high compared to the low $p\text{CO}_2$ treatment (Fig. 6). Correlation between pH and the increase of APA was low (Table 2). The alkaline phosphatase has an optimum between pH 7.5 and 10 (e.g. Healey and Hendzel, 1979; Münster et al., 1992), depending on origin and composition of the enzyme assemblage. Other enzymes were shown to have an optimum at a pH below present seawater pH (e.g. Münster et al., 1992; Grossart et al., 2006; Piontek et al., 2010). Therefore, we assume that pH may also have a direct stimulating effect on APA.

Increased APA in the high $p\text{CO}_2$ treatments may have supported the growth of *Nodularia* by reducing P limitation. While APA was increasing, DOP concentrations decreased in

parallel (Fig. 7). The rapid hydrolysis and recycling of DOP by *Nodularia* may have stimulated POP (biomass) production. On the other hand, increased C availability in the high $p\text{CO}_2$ treatments may have stimulated *Nodularia* growth, which in turn increased the expression of more alkaline phosphatase and this consecutively supported *Nodularia* growth. This point needs further examination as it cannot be resolved completely here. Our results are in accordance with another study that investigated the effect of elevated $p\text{CO}_2$ on APA during a mesocosm experiment under phosphate depletion (Tanaka et al., 2008). To sum up, we hypothesize that DOP recycling by alkaline phosphatase was stimulated by increasing $p\text{CO}_2$ and likely beneficial for *Nodularia* growth.

The K_m values of APA in our experiment increased over time and tended to be higher at high $p\text{CO}_2$ but differences were not significant (Table 1). Higher K_m values indicate decreasing substrate affinity. Enzymes catalyzing the same reaction may occur in more than one molecular form (isoenzymes), characterised by different half-saturation constants (K_m), temperature, and pH optima (Hoppe, 2003). Substrate specificity of phosphatase is scarcely explored. The increasing K_m values in our study might be explained by the production of different and less-specific isoenzymes of the alkaline phosphatase. This could be a mechanism for *Nodularia* to access more and different compounds of the DOP pool under severe P-limitation. Because total APA and K_m values were likewise increasing, enzyme efficiency ($V_{\max} : K_m$ ratio) did not increase with increasing $p\text{CO}_2$. In terms of magnitude K_m values determined here are in the range of values measured in the Central North Pacific Ocean (Perry and Eppley, 1981) and in the Gulf of Biscay (Labry et al., 2005) but below values from the Baltic Sea, which ranged between 4 and 37 μM (Grönlund et al., 1996). In conclusion, phosphate affinity of the alkaline phosphatase tended to be lower in the high $p\text{CO}_2$ treatment but enzyme efficiency remained.

To investigate the effect of $p\text{CO}_2$ on production and exudation of organic matter by *Nodularia*, we tried to exclude heterotrophic bacteria to avoid fast degradation of labile components. Although a low number of heterotrophic bacteria were still present in the treatments, we did not detect active growth. In our study, AP and LAP activities could be mostly assigned to cyanobacteria although we cannot completely exclude the contribution of heterotrophic bacteria to LAP activity. This is in accordance with previous studies that found extracellular enzyme activity in association with *Nodularia* sp. (Huber and Hamel, 1985b; Stoecker et al., 2005). Around 37 % of APA and 30 % of LAP activity were associated with cyanobacteria during a *Nodularia* dominated bloom in the Baltic Sea (Stoecker et al., 2005). However, heterotrophic bacteria may have contributed to organic matter degradation, which is reflected in slightly increasing α - and β -glucosidase activities over time. In the field, heterotrophic bacteria may compete with cyanobacteria for nutrients and contribute significantly to the recycling of organic matter, especially in the decline of algal blooms (Chrost et al., 1989;

Jacquet et al., 2002). However, cyanobacteria are efficient in using DOP and therefore successful competitors with heterotrophic bacteria for phosphate (Vahtera et al., 2007; Michelou et al., 2011).

4.3 Implications for the Baltic Sea under environmental change

Ocean acidification is only one of several environmental changes caused by rising atmospheric CO_2 concentrations. To provide a realistic picture of climate change for the marine ecosystem, the multiple effects of environmental change need to be addressed (Rost et al., 2008). Combined effects of climate change (e.g. CO_2 and temperature) may compensate or amplify direct effects of increasing CO_2 levels alone. Similar to pH, temperature may affect stability, hydrolyzation rates and substrate affinity of enzymes (Hernandez et al., 2002). Temperature may also enhance diazotrophic growth as suggested by O'Neil et al. (2012) and consequently expand range and timing of diazotrophic cyanobacteria blooms in the future. Higher temperatures will also reduce the mixing of the upper ocean due to increased thermal stratification and suppress the upwelling of nitrate (Doney, 2006), further promoting the growth of diazotrophic organisms such as *Nodularia spumigena*.

On the other hand, the on-going increase in global N loading may potentially increase P limitation in marine ecosystems (Dyhrman et al., 2007). P is an important driver of microbial dynamics in marine systems which lead to an intense competition for P between phototrophic and heterotrophic microorganism and forces them to improve their P-cycling efficiencies. As *Nodularia* is able to utilize DOP more efficiently compared to other phytoplankton in the Baltic Sea (Vahtera et al., 2010), they may benefit from decreasing seawater pH and possibly also from ocean warming. This may promote a succession of cyanobacterial communities towards this genus. It was recently shown that the cyanobacterium *Aphanizomenon ovalisporum* promotes inorganic phosphate supply by secreting toxins, which induces alkaline phosphatase in other phytoplankton species (Bar-Yosef et al., 2010; Raven, 2010). Some *Nodularia* strains produce the cyanotoxin nodularin during the summer bloom (Sivonen et al., 1989; Sellner et al., 2003), which accumulates in blue mussels (Kankaanpää et al., 2007), flounders (Kankaanpää et al., 2005) and seabirds (Sipiä et al., 2004). Mass occurrences of *Nodularia* due to climate change might lead to an overall increase in cyanotoxin concentration. These toxins might spread further in the ocean and accumulate in the invertebrates and vertebrates with unknown consequences for the marine food web and eventually humans. Furthermore, extended blooms may lead to higher aggregation and export of filaments to deeper waters. Enhanced microbial degradation there could enhance oxygen consumption and consequently expand the already existing oxygen-deficient zone in the deeper waters of the Baltic Sea.

5 Conclusions

Our results suggest that *Nodularia spumigena* can grow faster under elevated $p\text{CO}_2$ supported by enhanced recycling of organic matter to satisfy nutrient demands. Aggregation of filaments and the export of organic matter towards deeper water layers may change due to the formation of more gel particles by *Nodularia spumigena*. To predict the effect of climate change on cyanobacterial dynamics and organic matter cycling in the sea, we need to broaden the focus by including the combined effects of all projected changes in environmental conditions.

Supplementary material related to this article is available online at: <http://www.biogeosciences.net/10/567/2013/bg-10-567-2013-supplement.zip>.

Acknowledgements. We are grateful for the help of Bernd Schneider, Hildegard Kubsch, Nicole Händel, Jon Roa, Carolin Mages, and Tobias Mattfeldt for assistance in measuring and analysing samples. We thank two anonymous reviewers, Kai Ziervogel, and particularly the editor, Clare Woulds, for their comments which greatly improved the quality of the manuscript. This study was granted by the BMBF project BIOACID (Biological impacts of ocean acidification, theme 1.2.).

Edited by: C. Woulds

References

- Allredge, A. L., Passow, U., and Logan, B. E.: The abundance and significance of a class of large transparent organic particles in the ocean, *Deep-Sea Res. I*, 40, 1131–1140, 1993.
- Azam, F., Fenchel, T., Field, J. G., Gray, J. S., Meyer-Reil, L. A., and Thingstad, F.: The Ecological Role of Water-Column Microbes in the Sea, *Mar. Ecol.-Prog. Ser.*, 257–263, 1983.
- Barcelos e Ramos, J., Biswas, H., Schulz, K. G., LaRoche, J., and Riebesell, U.: Effect of rising atmospheric carbon dioxide on the marine nitrogen fixer *Trichodesmium*, *Global Biogeochem. Cy.*, 21, 1–6, doi:10.1029/2006GB002898, 2007.
- Bar-Yosef, Y., Sukenik, A., Hadas, O., Viner-Mozzini, Y., and Kaplan, A.: Enslavement in the Water Body by Toxic *Aphanizomenon ovalisporum*, Inducing Alkaline Phosphatase in Phytoplanktons, *Curr. Biol.*, 20, 1557–1561, doi:10.1016/j.cub.2010.07.032, 2010.
- Beardall, J., Young, E., and Roberts, S.: Approaches for determining phytoplankton nutrient limitation, *Aquat. Sci.*, 63, 44–69, 2001.
- Björkman, K. and Karl, D. M.: Bioavailability of inorganic and organic phosphorus compounds to natural assemblages of microorganisms in Hawaiian coastal waters, *Mar. Ecol.-Prog. Ser.*, 111, 265–273, 1994.
- Borchard, C. and Engel, A.: Organic matter exudation by *Emiliania huxleyi* under simulated future ocean conditions, *Biogeosciences*, 9, 3405–3423, doi:10.5194/bg-9-3405-2012, 2012.
- Chrost, R. J. and Overbeck, J.: Kinetics of Alkaline Phosphatase activity and Phosphorus Availability for Phytoplankton and Bacterioplankton in Lake Plußsee (North German Eutrophic Lake), *Microb. Ecol.*, 13, 229–248, 1987.
- Chrost, R. J., Münster, U., Rai, H., Albrecht, D., Witzel, P. K., and Overbeck, J.: Photosynthetic production and exoenzymatic degradation of organic matter in the euphotic zone of a eutrophic lake, *J. Plankton Res.*, 11, 223–242, 1989.
- Czerny, J., Barcelos e Ramos, J., and Riebesell, U.: Influence of elevated CO_2 concentrations on cell division and nitrogen fixation rates in the bloom-forming cyanobacterium *Nodularia spumigena*, *Biogeosciences*, 6, 1865–1875, doi:10.5194/bg-6-1865-2009, 2009.
- Degerholm, J., Gundersen, K., Bergman, B., and Söderbäck, E.: Phosphorus-limited growth dynamics in two Baltic Sea cyanobacteria, *Nodularia* sp. and *Aphanizomenon* sp., *FEMS Microbiol. Ecol.*, 58, 323–332, doi:10.1111/j.1574-6941.2006.00180.x, 2006.
- Doney, S.: Plankton in a warmer world, *Nature*, 444, 695–696, 2006.
- Dyhrman, S. T., Ammerman, J. W., and van Moody, B. A. S.: Microbes and the Marine Phosphorus Cycle, *Oceanography*, 20, 110–116, 2007.
- Engel, A.: Direct relationship between CO_2 uptake and transparent exopolymer particles production in natural phytoplankton, *J. Plankton Res.*, 24, 49–53, 2002.
- Engel, A.: Determination of Marine Gel Particles, in: *Practical Guidelines for the Analysis of Seawater*, 1st Edn., edited by: Wurl, O., CRC Press, Boca Raton, FL, 125–141, 2009.
- Engel, A., Goldthwait, S., Passow, U., and Alldredge, A. L.: Temporal decoupling of carbon and nitrogen dynamics in a mesocosm diatom bloom, *Limnol. Oceanogr.*, 47, 753–761, 2002a.
- Engel, A., Meyerhöfer, M., and Bröckel, K. von: Chemical and Biological Composition of Suspended Particles and Aggregates in the Baltic Sea in Summer (1999), *Estuar. Coast. Shelf S.*, 55, 729–741, doi:10.1006/ecss.2001.0927, 2002b.
- Engel, A., Delille, B., Jacquet, S., Riebesell, U., Rochelle-Newall, E., Terbrüggen, A., and Zondervan, I.: Transparent exopolymer particles and dissolved organic carbon production by *Emiliania huxleyi* exposed to different CO_2 concentrations: a mesocosm experiment, *Aquat. Microb. Ecol.*, 34, 93–104, 2004a.
- Engel, A., Thoms, S., Riebesell, U., Rochelle-Newall, E., and Zondervan, I.: Polysaccharide aggregation as a potential sink of marine dissolved organic carbon, *Nature*, 428, 929–932, 2004b.
- Feely, R. A., Doney, S. C., and Cooley, S. R.: Ocean Acidification – Present Conditions and Future Changes in a High- CO_2 World, *Oceanography*, 22, 36–47, 2010.
- Finni, T., Kononen, K., Olsonen, R., and Wallström, K.: The History of Cyanobacterial Blooms in the Baltic Sea, *AMBIO*, 30, 172–178, doi:10.1579/0044-7447-30.4.172, 2001.
- Gasol, J. M. and del Giorgio, P. A.: Using flow cytometry for counting natural planktonic bacteria and understanding the structure of planktonic bacterial communities, *Sci. Mar.*, 64, 197–224, 2000.
- Grasshoff, K., Ehrhardt, M., and Kremling, K.: *Determination of nutrients*, 2nd Edn., Verlag Chemie, Weinheim, 1983.
- Grönlund, L., Kononen, K., Lahdes, E., and Mäkela, K.: Community development and modes of phosphorus utilization in a late summer ecosystem in the central Gulf of Finland, the Baltic Sea, *Hydrobiologia*, 331, 97–108, 1996.

- Grossart, H.-P., Allgaier, M., Passow, U., and Riebesell, U.: Testing the effect of CO_2 concentration on the dynamics of marine heterotrophic bacterioplankton, *Limnol. Oceanogr.*, 51, 1–11, 2006.
- Healey, F. P. and Hendzel, L. L.: Fluorometric measurement of alkaline phosphatase activity in algae, *Freshwater Biol.*, 9, 429–439, 1979.
- HELCOM: Atmospheric supply of nitrogen, lead, cadmium, mercury and lindane to the Baltic Sea over the period 1996–2000, *Balt. Sea Environ. Proc.*, 101B, 1–75, 2005.
- Hernandez, I., Niell, F. X., and Whitton, B. A.: Phosphatase activity of benthic marine algae. An overview, *J. Appl. Phycol.*, 14, 475–487, 2002.
- Hoppe, H.-G.: Significance of exoenzymatic activities in the ecology of brackish water: measurements by means of methylumbelliferyl-substrates, *Mar. Ecol.-Prog. Ser.*, 11, 299–308, 1983.
- Hoppe, H.-G.: Phosphatase activity in the sea, *Hydrobiologia*, 493, 187–200, 2003.
- Hoppe, H.-G., Arnosti, C., and Herndl, G. J.: Ecological Significance of Bacterial Enzymes on the Marine Environment, in: *Enzymes in the environment: Activity, ecology, and applications*, edited by: Burns, R. G. and Dick, R. P., Marcel Dekker, New York, 2002.
- Huber, A. L. and Hamel, K. S.: Phosphatase activities in relation to phosphorus nutrition in *Nodularia spumigena* (Cyanobacteriaceae). I. Field studies, *Hydrobiologia*, 123, 145–152, 1985a.
- Huber, A. L. and Hamel, K. S.: Phosphatase activities in relation to phosphorus nutrition in *Nodularia spumigena* (Cyanobacteriaceae). 2. Laboratory studies, *Hydrobiologia*, 123, 81–88, 1985b.
- Hutchins, D. A., Fu, F.-X., Zhang, Y., Warner, M. E., Feng, Y., Portune, K., Bernhardt, P. W., and Mulholland, M.: CO_2 control of *Trichodesmium* N_2 fixation, photosynthesis, growth rates and elemental ratios: Implications for past, present and future biogeochemistry, *Limnol. Oceanogr.*, 52, 1293–1304, 2007.
- Jacquet, S., Havskum, H., Thingstad, T. F., and Vaulot, D.: Effects of inorganic and organic nutrient addition on coastal microbial community (Isefjord, Denmark), *Mar. Ecol.-Prog. Ser.*, 228, 3–14, 2002.
- Jeffrey, S. and Welschmeyer, N.: Spectrophotometric and fluorometric equations in common use in oceanography, in: *Phytoplankton pigments in oceanography: Guidelines to modern methods*, edited by: Jeffrey, S. W., Mantoura S. W., and Wright R. F. C., United Nations Educational Scientific and Cultural Organization (UNESCO), Paris, 597–615, 1997.
- Johnson, K. M., Wills, K. D., Butler, D. B., Johnson, W. K., and Wong, C. S.: Coulometric total carbon dioxide analysis for marine studies: Maximizing the performance of an automated gas extraction system and coulometric detector, *Mar. Chem.*, 44, 167–187, 1993.
- Joint, I., Doney, S. C., and Karl, D. M.: Will ocean acidification affect marine microbes?, *ISME J.*, 5, 1–7, doi:10.1038/ismej.2010.79, 2010.
- Kahru, M., Horstmann, U., and Rud, O.: Satellite Detection of Increased Cyanobacteria Blooms in the Baltic Sea: Natural Fluctuation or Ecosystem Change?, *AMBIO*, 23, 496–472, 1994.
- Kankaanpää H., Turunen, A. K., Karlsson, K., Bylund, G., Meriluoto, J., and Sipilä, V.: Heterogeneity of nodularin bioaccumulation in northern Baltic Sea flounders in 2002, *Chemosphere*, 59, 1091–1097, doi:10.1016/j.chemosphere.2004.12.010, 2005.
- Kankaanpää, H., Leiniö, S., Olin, M., Sjövall, O., Meriluoto, J., and Lehtonen, K. K.: Accumulation and depuration of cyanobacterial toxin nodularin and biomarker responses in the mussel *Mytilus edulis*, *Chemosphere*, 68, 1210–1217, doi:10.1016/j.chemosphere.2007.01.076, 2007.
- Kononen, K., Nommann, S., Hansen, G., Hansen, R., Breuel, G., and Gupalo, E.: Spatial heterogeneity and dynamics of vernal phytoplankton species in the Baltic Sea in April–May 1986, *J. Plankton Res.*, 14, 107–125, 1992.
- Kranz, S. A., Levitan, O., Richter, K.-U., Prasil, O., Berman-Frank, I., and Rost, B.: Combined Effects of CO_2 and Light on the N_2 -Fixing Cyanobacterium *Trichodesmium* IMS101: Physiological Responses, *Plant Physiol.*, 154, 334–345, doi:10.1104/pp.110.159145, 2010.
- Labry, C., Delmas, D., and Herbland, A.: Phytoplankton and bacterial alkaline phosphatase activities in relation to phosphate and DOP availability within the Gironde plume waters (Bay of Biscay), *J. Exp. Mar. Biol. Ecol.*, 318, 213–225, doi:10.1016/j.jembe.2004.12.017, 2005.
- Larsson, U., Hajdu, S., Walve, J., and Elmgren, R.: Baltic Sea nitrogen fixation estimated from the summer increase in upper mixed layer total nitrogen, *Limnol. Oceanogr.*, 46, 811–820, 2001.
- Leppard, G. G.: The characterization of algal and microbial mucilages and their aggregates in aquatic ecosystems, *Sci. Total Environ.*, 165, 103–131, 1995.
- Lewis, E., Wallace, D., and Allison, L. J.: Program developed for CO_2 system calculations ORNL/CDIAC-105, Carbon Dioxide Information Analysis Center, Oak Ridge National Laboratory, US Department of Energy, 1998.
- Logan, B. E., Passow, U., Alldredge, A. L., Grossart, H. P., and Simon, M.: Rapid formation and sedimentation of large aggregates is predictable from coagulation rates (half-lives) of transparent exopolymer particles (TEP), *Deep-Sea Res. Pt. II*, 42, 203–214, doi:10.1016/0967-0645(95)00012-F, 1995.
- Lomas, M. W., Rumbley, C. J., and Gilbert, P. M.: Ammonium release by nitrogen sufficient diatoms in response to rapid increases in irradiance, *J. Plankton Res.*, 22, 2351–2366, 2000.
- Mather, R. L., Reynolds, S. E., Wolff, G. A., Williams, R. G., Torres-Valdes, S., Woodward, E. M. S., Landolfi, A., Pan, X., Sanders, R., and Achterberg, E. P.: Phosphorus cycling in the North and South Atlantic Ocean subtropical gyres, *Nat. Geosci.*, 1, 439–443, doi:10.1038/ngeo232, 2008.
- Meehl, G. A., Covey, C., Delworth, T., Latif, M., McAvaney, B., Mitchell, J. F. B., Stouffer, R. J., and Taylor, K. E.: THE WCRP CMIP3 Multimodel Dataset: A New Era in Climate Change Research, *B. Am. Meteor. Soc.*, 88, 1383–1394, doi:10.1175/BAMS-88-9-1383, 2007.
- Michelou, V. K., Lomas, M. W., and Kirchman, D. L.: Phosphate and adenosine-5'-triphosphate uptake by cyanobacteria and heterotrophic bacteria in the Sargasso Sea, *Limnol. Oceanogr.*, 56, 323–332, doi:10.4319/lo.2011.56.1.0323, 2011.
- Mulholland, M., Flöge, S., Carpenter, E., and Capone, D.: Phosphorus dynamics in cultures and natural populations of *Trichodesmium* spp., *Mar. Ecol.-Prog. Ser.*, 239, 45–55, 2002.
- Münster, U., Einiö, P., Nurminen, J., and Overbeck, J.: Extracellular enzymes in a polyhumic lake: important regulators in detritus processing, *Hydrobiologia*, 229, 225–238, 1992.
- Nausch, M.: Microbial activities on *Trichodesmium* colonies, *Mar. Ecol.-Prog. Ser.*, 141, 173–181, 1996.

- Nausch, M.: Alkaline phosphatase activities and the relationship to inorganic phosphate in the Pomeranian Bight (southern Baltic Sea), *Aquat. Microb. Ecol.*, 87–94, 1998a.
- Nausch, M., Pollehne, F., and Kerstan, E.: Extracellular Enzyme Activities in Relation to Hydrodynamics in the Pomeranian Bight (Southern Baltic Sea), *Microb. Ecol.*, 36, 251–258, 1998b.
- Nausch, M. and Nausch, G.: Bioavailability of dissolved organic phosphorus in the Baltic Sea, *Mar. Ecol.-Prog. Ser.*, 321, 9–17, 2006.
- Nausch, M., Nausch, G., and Wasmund, N.: Phosphorus dynamics during the transition from nitrogen to phosphate limitation in the central Baltic Sea, *Mar. Ecol.-Prog. Ser.*, 266, 15–25, 2004.
- Niemi, Å.: Blue-green algal blooms and N:P ratio in the Baltic Sea, *Acta Bot. Fenn.*, 110, 57–61, 1979.
- O’Neil, J. and Roman, M. R.: Grazers and associated organisms of *Trichodesmium*, in: Marine pelagic cyanobacteria: *Trichodesmium* and other diazotrophs, edited by: Carpenter, E. J., Capone, D. G., and Rueter J., Kluwer Academic Publishers, Dordrecht, 61–74, 1992.
- O’Neil, J. M., Davis, T. W., Burford, M. A., and Gobler, C. J.: The Rise of Harmful Cyanobacteria Blooms: The Potential Roles of Eutrophication and Climate Change, *Harmful Algae*, 14, 313–334, doi:10.1016/j.hal.2011.10.027, 2012.
- Otero, A. and Vincenzini, M.: *Nostoc* (Cyanophyceae) goes nude: extracellular polysaccharides serve as a sink for reducing power under unbalanced C/N metabolism, *J. Phycol.*, 40, 74–81, 2004.
- Parry, M. L., Canziani, O. F., Palutikof, J. P., van der Linden, P. J., and Hanson, C. (Eds.): IPCC: Climate change 2007: Contribution of Working Group II to the Fourth Assessment Report of the Intergovernmental Panel on Climate Change, Cambridge University Press, Cambridge, UK, 2007.
- Passow, U.: Transparent exopolymer particles (TEP) in aquatic environments, *Progr. Oceanogr.*, 55, 287–333, doi:10.1016/S0079-6611(02)00138-6, 2002.
- Passow, U. and Alldredge, A. L.: A dye-binding assay for the spectrophotometric measurement of transparent exopolymer particles (TEP), *Limnol. Oceanogr.*, 40, 1326–1335, 1995.
- Passow, U., Shipe, R., Murray, A., Pak, D., Brzezinski, M., and Alldredge, A.: The origin of transparent exopolymer particles (TEP) and their role in the sedimentation of particulate matter, *Cont. Shelf Res.*, 21, 327–346, doi:10.1016/S0278-4343(00)00101-1, 2001.
- Paytan, A. and McLaughlin, K.: The Oceanic Phosphorus Cycle, *Chem. Rev.*, 107, 563–576, doi:10.1021/cr0503613, 2007.
- Perry, M. and Eppley, R.: Phosphate uptake by phytoplankton in the central North Pacific Ocean, *Deep-Sea Res.*, 28, 39–49, doi:10.1016/0198-0149(81)90109-6, 1981.
- Piontek, J., Lunau, M., Händel, N., Borchard, C., Wurst, M., and Engel, A.: Acidification increases microbial polysaccharide degradation in the ocean, *Biogeosciences*, 7, 1615–1624, doi:10.5194/bg-7-1615-2010, 2010.
- Pöder, T., Maestrini, S. Y., Balode, M., Lips, U., Béchemin, C., Andrushaitis, A., and Purina, I.: The role of inorganic and organic nutrients on the development of phytoplankton along a transect from the Daugava River mouth to the Open Baltic, in spring and summer 1999, *ICES J. Mar. Sci.*, 60, 827–835, doi:10.1016/S1054-3139(03)00069-9, 2003.
- Rasband, W. S.: ImageJ, US National Institutes of Health, Bethesda, Maryland, USA, 1997–2011.
- Raupach, M. R., Marland, G., Ciais, P., Le Quéré, C., Canadell, J. G., Klepper, G., and Field, C. G.: Global and regional drivers of accelerating CO_2 emissions, *P. Natl. Acad. Sci.*, 104, 10288–10293, 2007.
- Raven, J. A.: Cyanotoxins: A Poison that Frees Phosphate, *Curr. Biol.*, 20, R850–R852, doi:10.1016/j.cub.2010.08.012, 2010.
- Rost, B., Zondervan, I., and Wolf-Gladrow, D.: Sensitivity of phytoplankton to future changes in ocean carbonate chemistry: current knowledge, contradictions and research directions, *Mar. Ecol.-Prog. Ser.*, 373, 227–237, doi:10.3354/meps07776, 2008.
- Schneider, B., Nausch, G., Nagel, K., and Wasmund, N.: The surface water CO_2 budget for the Baltic Proper: a new way to determine nitrogen fixation, *J. Mar. Syst.*, 42, 53–64, doi:10.1016/S0924-7963(03)00064-2, 2003.
- Sellner, K. G.: Physiology, ecology, and toxic properties of marine cyanobacteria blooms, Part 2: The ecology and oceanography of harmful algal blooms, *Limnol. Oceanogr.*, 42, 1089–1104, 1997.
- Sellner, K. G., Doucette, G. J., and Kirkpatrick, G. J.: Harmful algal blooms: causes, impacts and detection, *J. Ind. Microbiol. Biot.*, 30, 383–406, doi:10.1007/s10295-003-0074-9, 2003.
- Shipe, R. F., Passow, U., Brzezinski, M. A., Graham, W. M., Pak, D. K., Siegel, D. A., and Alldredge, A. L.: Effects of the 1997–98 El Niño on seasonal variations in suspended and sinking particles in the Santa Barbara basin, *Progr. Oceanogr.*, 54, 105–127, 2002.
- Sipiä, V., Karlsson, K., Meriluoto, J., and Kankaanpää, H.: Eiders (*Somateria mollissima*) obtain nodularin, a cyanobacterial hepatotoxin, in baltic sea food web, *Environ. Toxicol. Chem.*, 23, 1256–1260, 2004.
- Sivonen, K., Kononen, K., Esala, A.-L., and Niemelä, S. I.: Toxicity and isolation of the cyanobacterium *Nodularia spumigena* from the southern Baltic Sea in 1986, *Hydrobiologia*, 185, 3–8, 1989.
- Stoecker, D., Autio, R., Rintala, J.-M., and Kuosa, H.: Extracellular enzyme activity associated with filamentous cyanobacteria, *Aquat. Microb. Ecol.*, 40, 151–161, 2005.
- Sutherland, I. W.: Enzymes in the assay of microbial polysaccharides, *Process Biochem.*, 19, 19–24, 1985.
- Tanaka, T., Thingstad, T. F., Løvdal, T., Grossart, H.-P., Larsen, A., Allgaier, M., Meyerhöfer, M., Schulz, K. G., Wohlers, J., Zöllner, E., and Riebesell, U.: Availability of phosphate for phytoplankton and bacteria and of glucose for bacteria at different $p\text{CO}_2$ levels in a mesocosm study, *Biogeosciences*, 5, 669–678, doi:10.5194/bg-5-669-2008, 2008.
- Tyrell, T.: The relative influences of nitrogen and phosphorus on oceanic primary production, *Nature*, 400, 525–531, 1999.
- Unger, J., Endres, S., Wannicke, N., Engel, A., Voss, M., Nausch, G., and Nausch, M.: Response of *Nodularia spumigena* to $p\text{CO}_2$ – Part 3: Turnover of phosphorus compounds, *Biogeosciences Discuss.*, 9, 14709–14750, doi:10.5194/bgd-9-14709-2012, 2012.
- Utermöhl, H.: Zur Vervollkommnung der quantitativen Phytoplankton-Methodik, *Mitt. int. Ver. theor. angew. Limnol.*, 9, 1–38, 1958.
- Vahtera, E., Laamanen, M., and Rintala, J.-M.: Use of different phosphorus sources by the bloom-forming cyanobacteria *Aphanizomenon flos-aquae* and *Nodularia spumigena*, *Aquat. Microb. Ecol.*, 46, 225–237, 2007.

- Vahtera, E., Autio, R., Kaartokallio, H., and Laamanen, M.: Phosphate addition to phosphorus-deficient Baltic Sea plankton communities benefits nitrogen-fixing *Cyanobacteria*, *Aquat. Microb. Ecol.*, 60, 43–57, doi:10.3354/ame01408, 2010.
- Wannicke, N., Koch, B. P., and Voss, M.: Release of fixed N_2 and C as dissolved compounds by *Trichodesmium erythreum* and *Nodularia spumigena* under the influence of high light and high nutrient (P), *Aquat. Microb. Ecol.*, 57, 175–189, doi:10.3354/ame01343, 2009.
- Wannicke, N., Endres, S., Engel, A., Grossart, H.-P., Nausch, M., Unger, J., and Voss, M.: Response of *Nodularia spumigena* to $p\text{CO}_2$ – Part I: Growth, production and nitrogen cycling, *Biogeosciences*, 9, 2973–2988, doi:10.5194/bg-9-2973-2012, 2012.
- Wolf-Gladrow, D. A., Riebesell, U., Burkhardt, S., and Bijma, J.: Direct effects of CO_2 concentration on growth and isotopic composition of marine plankton, *Tellus B*, 51, 461–476, 1999.
- Wu, Z., Zeng, B., Li, R., and Song, L.: Physiological regulation of *Cylindrospermopsis raciborskii* (Nostocales, Cyanobacteria) in response to inorganic phosphorus limitation, *Harmful Algae*, 15, 53–58, doi:10.1016/j.hal.2011.11.005, 2012.
- Zalasiewicz, J., Williams, M., Smith, A., Barry, T. L., Coe, A. L., Bown, P. R., Brenchley, P., Cantrill, D., Gale, A., Gibbard, P., Gregory, F. J., Hounslow, M. W., Kerr, A. C., Pearson, P., Knox, R., Powell, J., Waters, C., Marshall, J., Oates, M., Rawson, P., and Stone, P.: Are we now living in the Anthropocene?, *Gsa Today*, 18, 4, doi:10.1130/GSAT01802A.1, 2008.