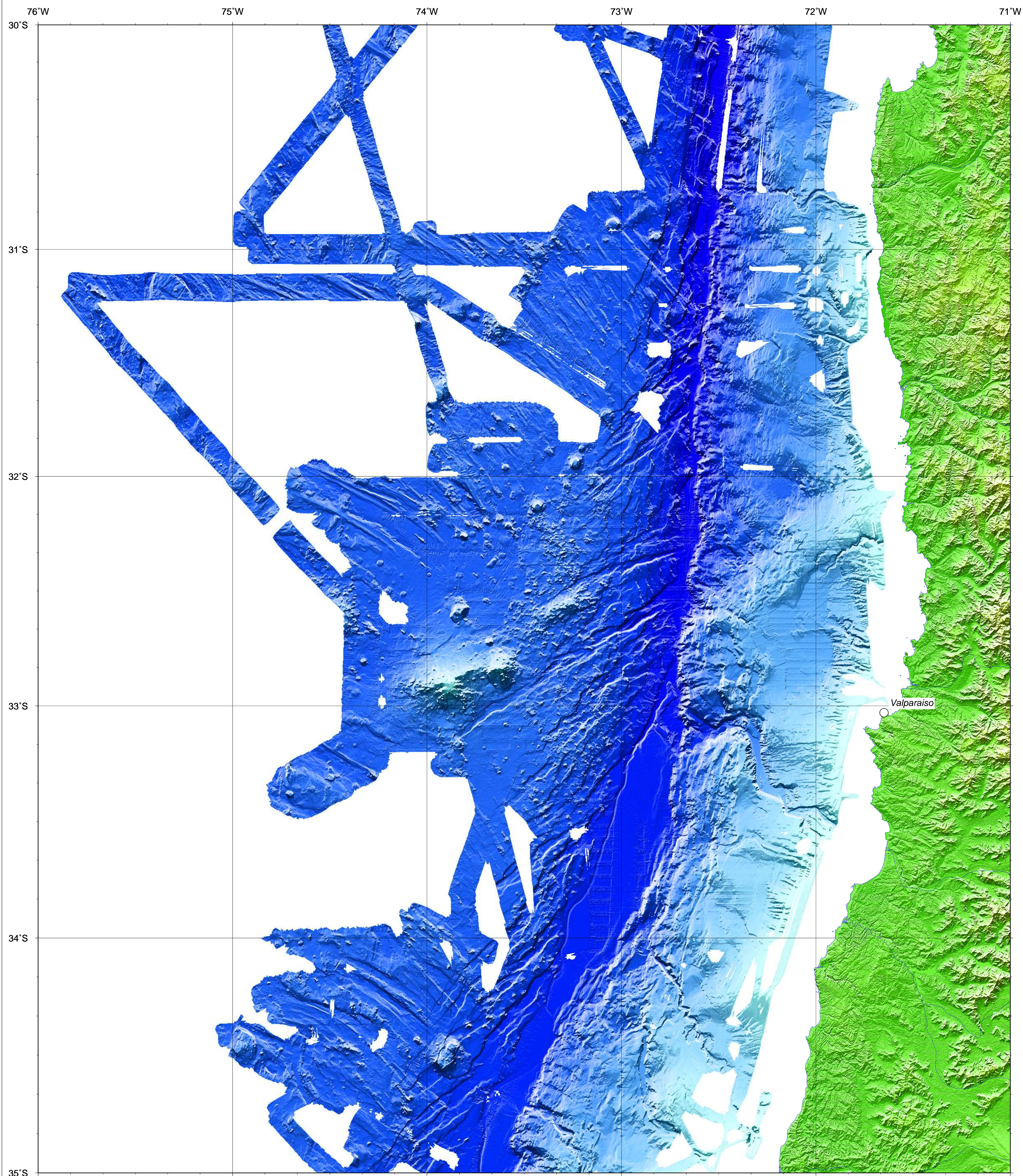
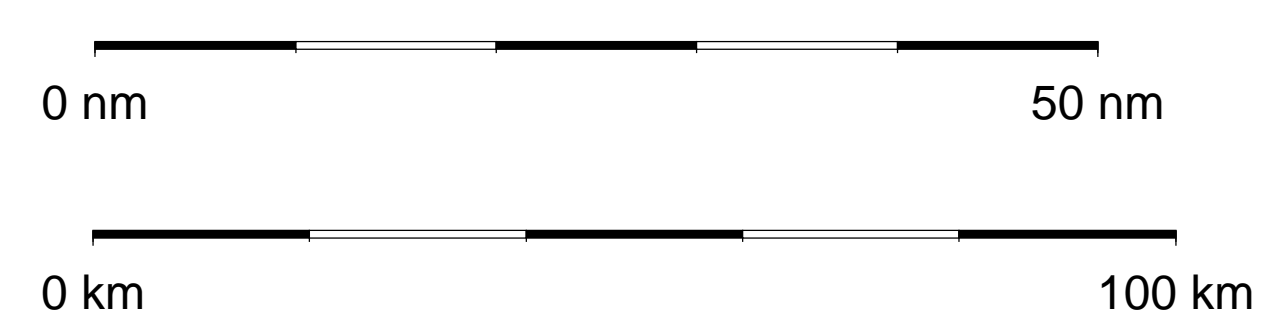


BATHYMETRIC CHART OF THE SOUTH EAST PACIFIC



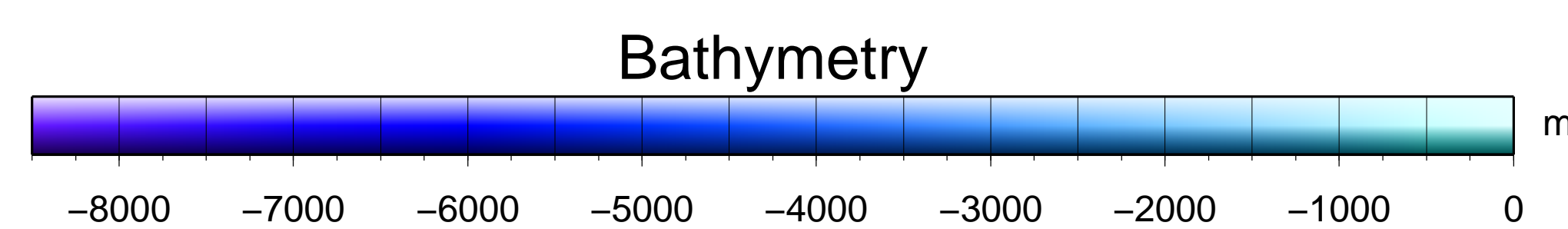
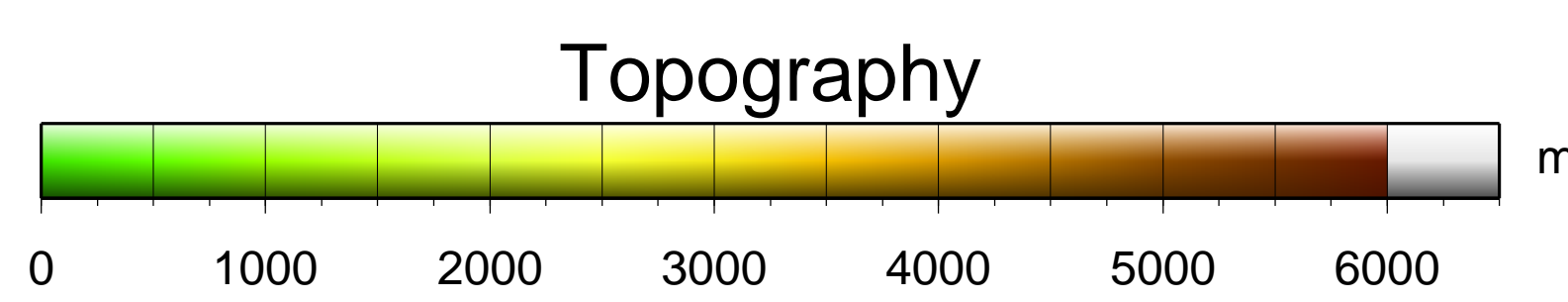
MAP SHEET s35w76



Scale 1:700000
Universal Mercator Projection, reference latitude 32.5°S

Bathymetric data compiled from multibeam surveys
RV SONNE (SO101, SO102, SO103, SO104, SO147, SO161, SO162, SO180, SO181, SO210)
RV METEOR (M67/1)
R.R.S. James Cook (JC23)
RV Vidal Gormaz

Topographic data: SRTM3



Data Processing
Multibeam data processing and calculation of Digital Terrain Model:
MB-System (<http://www.mbari.org/data/mbsystem>)
Data presentation and plotting: GMT (<http://gmt.soest.hawaii.edu/>)
DTM of bathymetry: regular grid 200 m x 200 m
DTM of topography: regular grid 90 m x 90 m

Acknowledgements
The research cruises had been funded by the German Federal Ministry of Education and Research (BMBF), the German Science Foundation (DFG) and FONDEF in Chile

