

# Seasonal predictions of equatorial Atlantic SST in a low-resolution CGCM with surface Heat Flux Correction



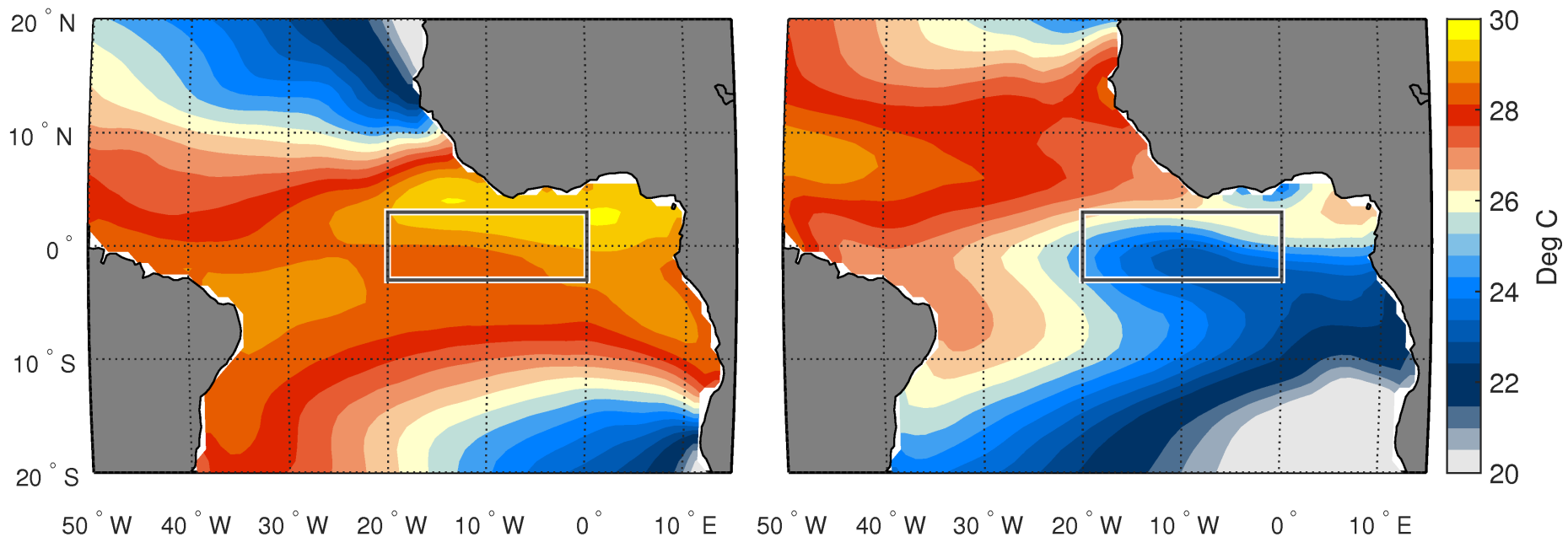
T. Dippe<sup>1</sup>, R. Greatbatch<sup>1</sup>, and H. Ding<sup>2</sup>

[1] GEOMAR Helmholtz Centre for Ocean Research, Kiel

[2] Coöperate Institute for Research in Environmental Sciences - University of Colorado and NOAA Earth Systems Research Laboratory, Boulder, USA

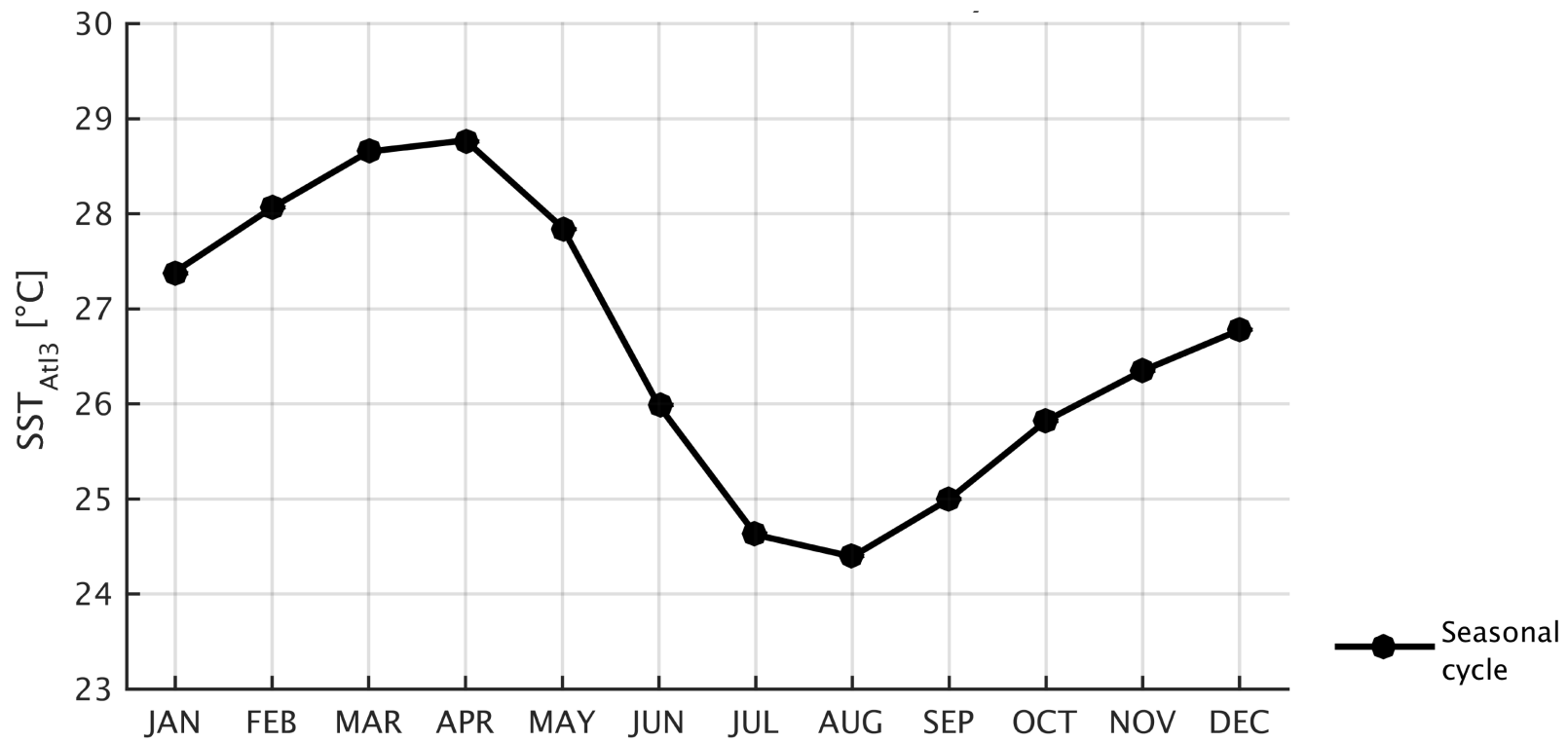


## Setting the scene

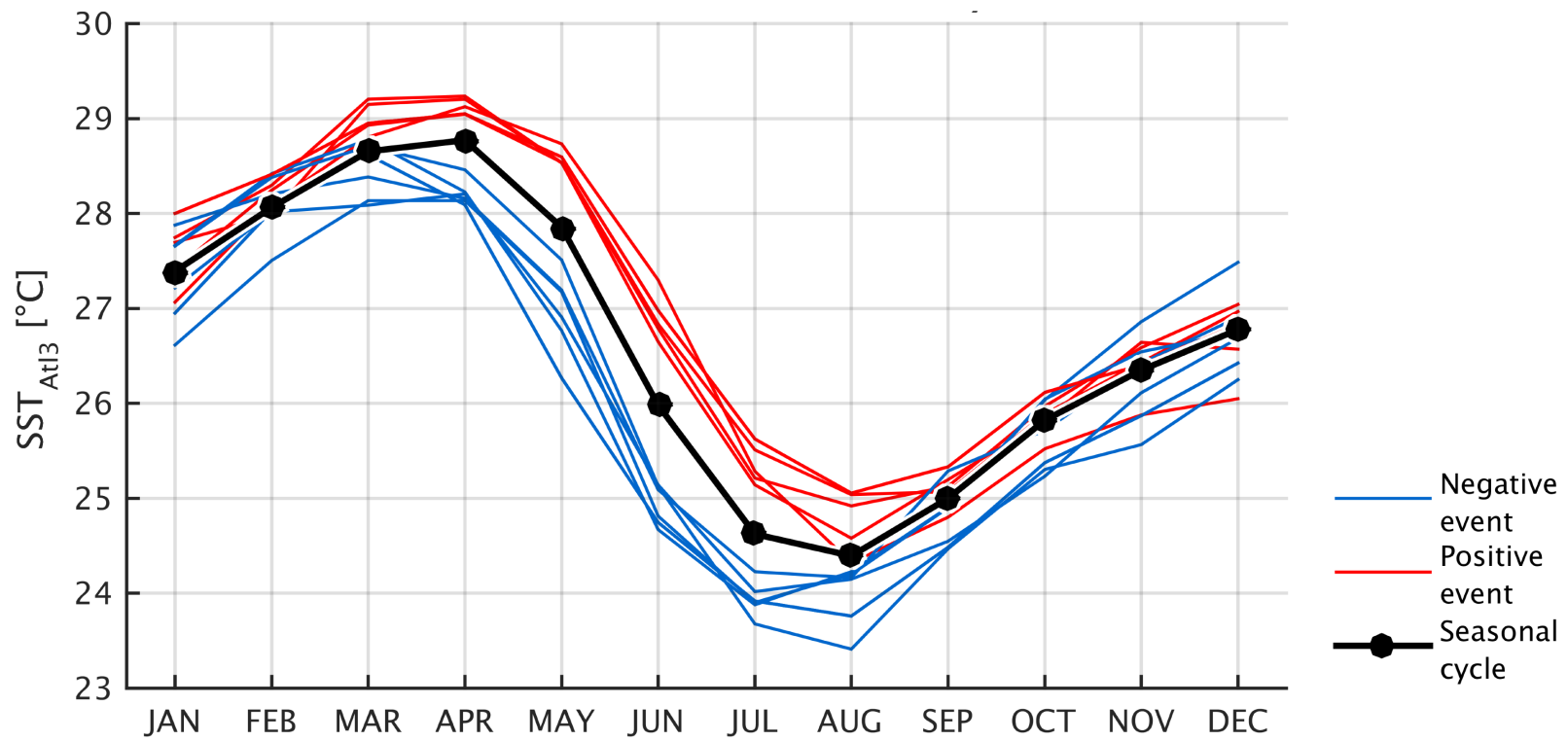


Absolute **SST** mean state in ERA-Interim for **April** (left) and **August** (fully developed cold tongue, right), 1981-2012. The box denotes the **Atl3 region**.

## ERA-Interim Atl3 SST

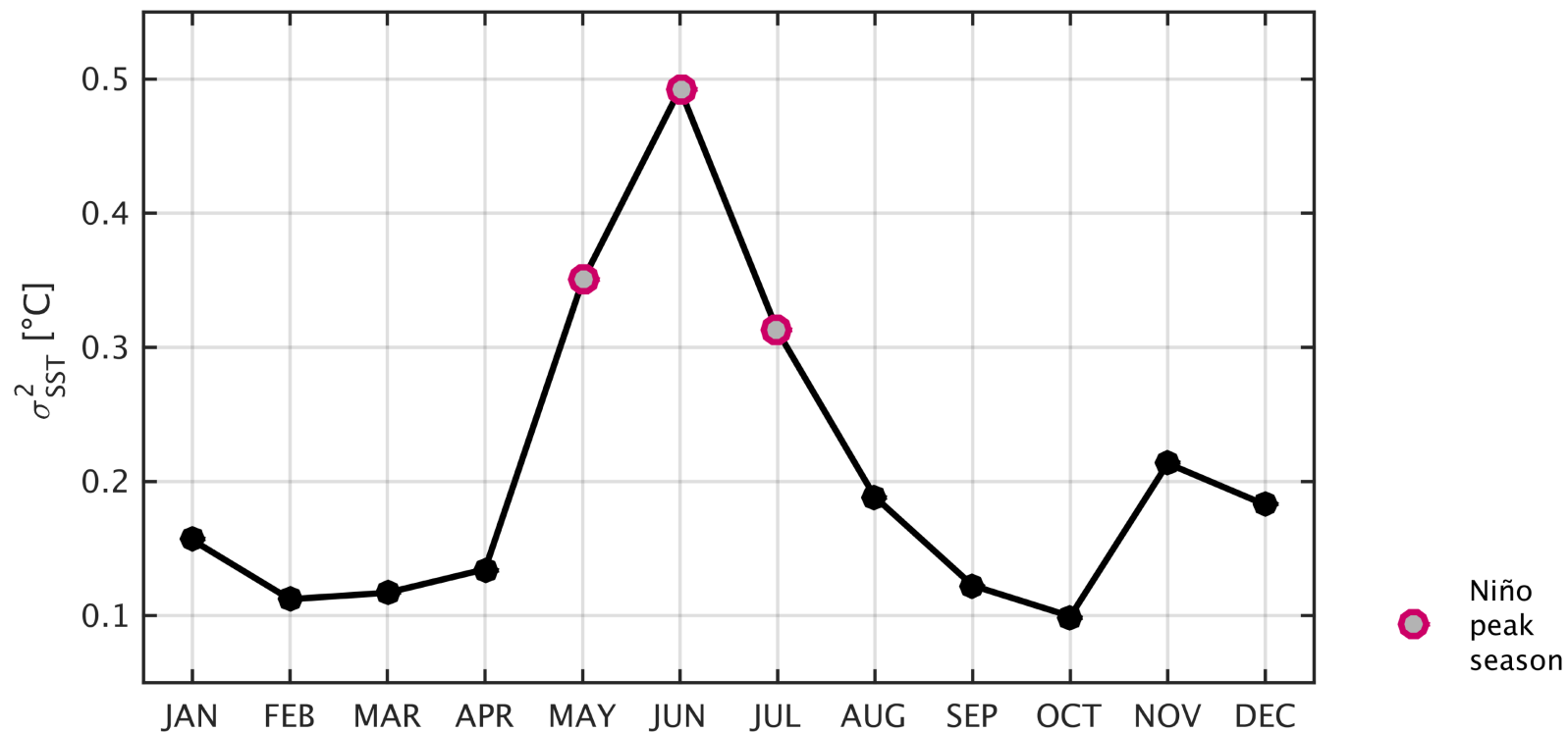


## ERA-Interim Atl3 SST

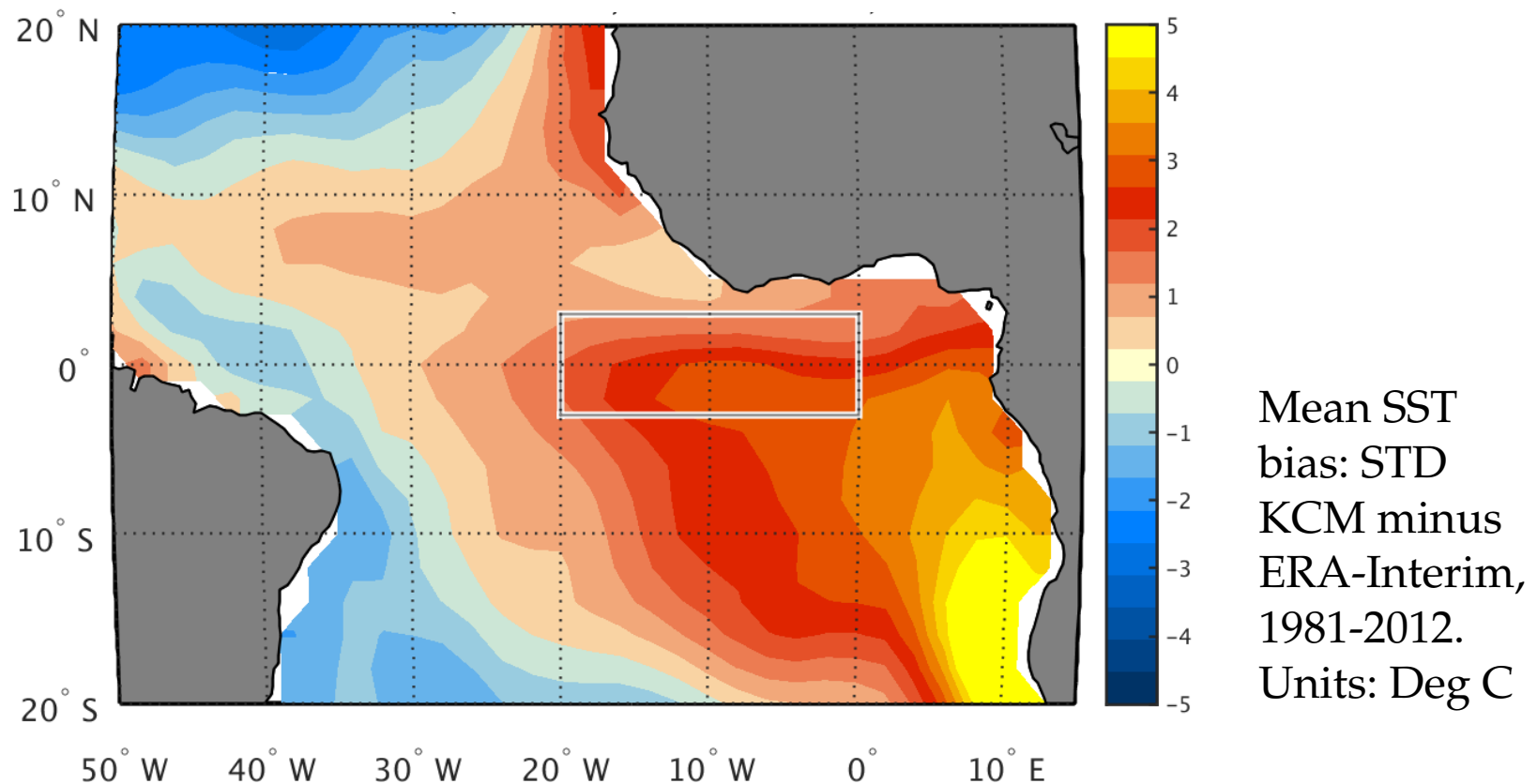




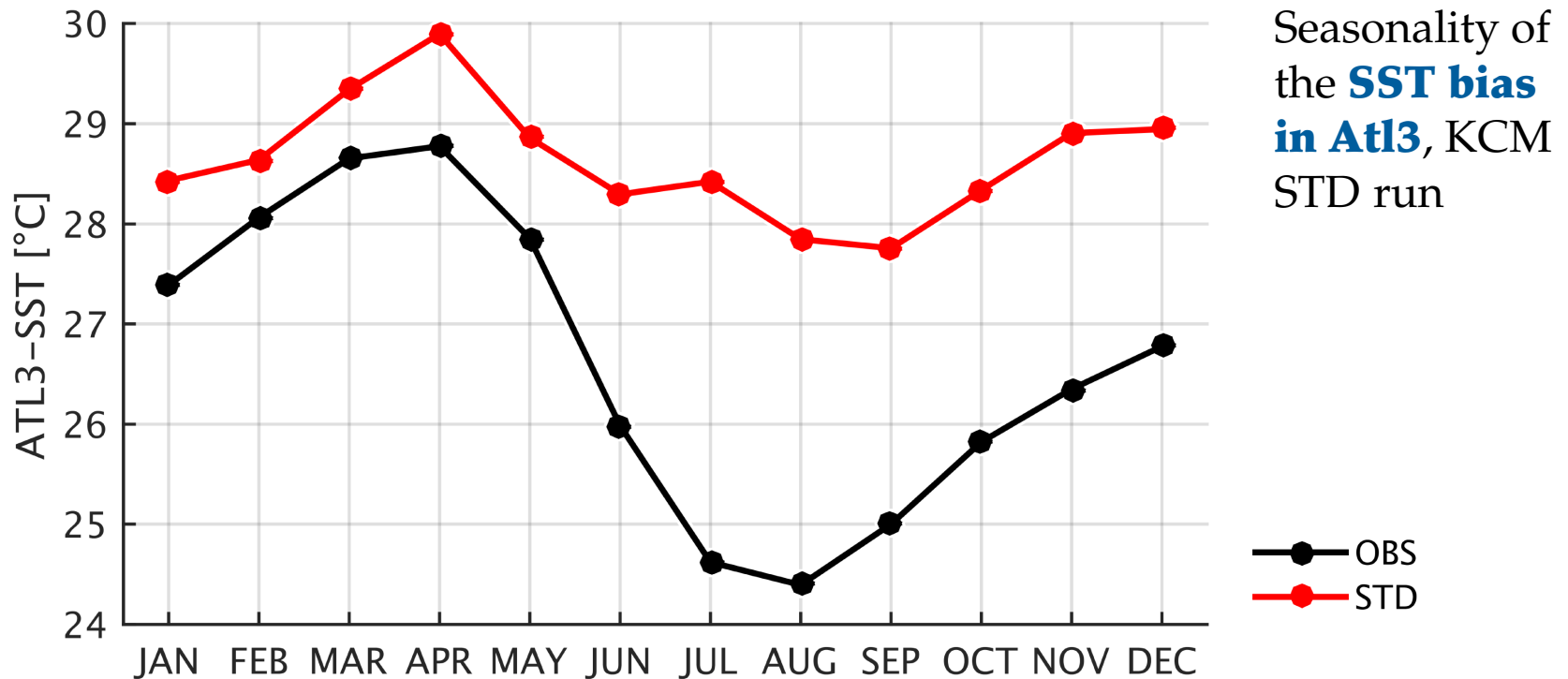
## Atl3 SST: Interannual variance



## The equatorial Atlantic SST Bias: State of the Art



## The equatorial Atlantic SST Bias: State of the Art



## Model and experimental Set-Up

### **The truth:**

- ERA-Interim

## Model and experimental Set-Up

### **The truth:**

- ERA-Interim

### **The model**

- Kiel Climate Model  
(**KCM**):
  - Atmosphere:  
ECHAM5, T31, 19  
levels
  - Ocean: OPA9 (NEMO),  
ORCA2, 31 levels
  - ...
  - Coupler: OASIS3

## Model and experimental Set-Up

### **The truth:**

- ERA-Interim

### **The model**

- Kiel Climate Model  
(**KCM**):
  - Atmosphere:  
ECHAM5, T31, 19  
levels
  - Ocean: OPA9 (NEMO),  
ORCA2, 31 levels
  - ...
  - Coupler: OASIS3

### **The time:**

- 1981-2012



## Model and experimental Set-Up

### **The truth:**

- ERA-Interim

### **The model**

- Kiel Climate Model  
(**KCM**):
  - Atmosphere:  
ECHAM5, T31, 19  
levels
  - Ocean: OPA9 (NEMO),  
ORCA2, 31 levels
  - ...
  - Coupler: OASIS3

### **The time:**

- 1981-2012

### **Experiments** (both for assimilation runs and hindcasts)

- **STD**: Standard KCM
- **FLX**: Additional global heat flux correction

## Model and experimental Set-Up

### **The truth:**

- ERA-Interim

### **The model**

- Kiel Climate Model  
(**KCM**):
  - Atmosphere:  
ECHAM5, T31, 19  
levels
  - Ocean: OPA9 (NEMO),  
ORCA2, 31 levels
  - ...
  - Coupler: OASIS3

### **The time:**

- 1981-2012

### **Experiments** (both for assimilation runs and hindcasts)

- **STD**: Standard KCM
- **FLX**: Additional global heat flux correction

### **Assimilation runs:**

- Produce initial conditions for hindcasts
- Assimilated data: ERA-Interim wind stress anomalies
- Assimilation technique: Partial coupling

## Model and experimental Set-Up

### **The truth:**

- ERA-Interim

### **The model**

- Kiel Climate Model  
(**KCM**):
  - Atmosphere:  
ECHAM5, T31, 19  
levels
  - Ocean: OPA9 (NEMO),  
ORCA2, 31 levels
  - ...
  - Coupler: OASIS3

### **The time:**

- 1981-2012

### **Experiments** (both for assimilation runs and hindcasts)

- **STD**: Standard KCM
- **FLX**: Additional global heat flux correction

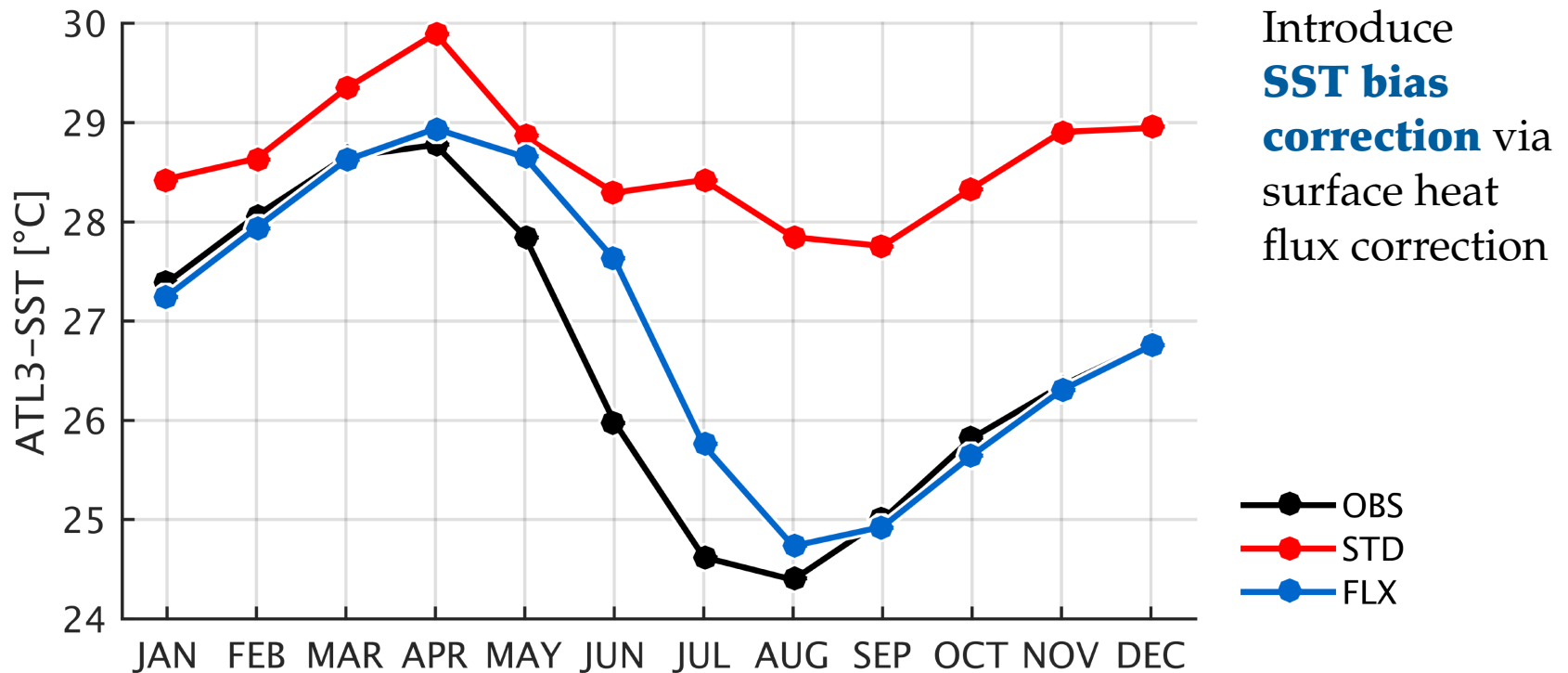
### **Assimilation runs:**

- Produce initial conditions for hindcasts
- Assimilated data: ERA-Interim wind stress anomalies
- Assimilation technique: Partial coupling

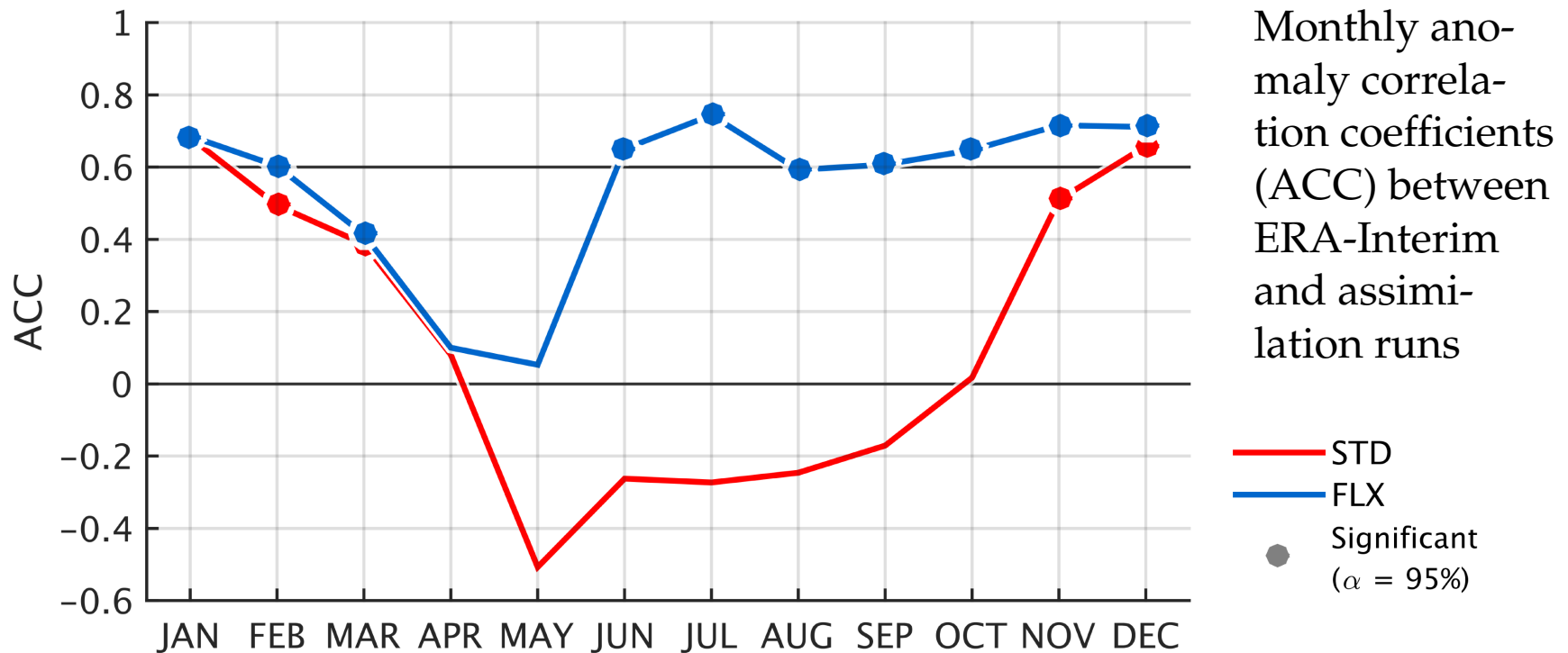
### **Hindcasts:**

- Restarted in Feb, May, Aug, Nov
- Run for 6 months: Fully coupled standard (heat-flux corrected) KCM for STD (FLX)
- 9 ensemble members

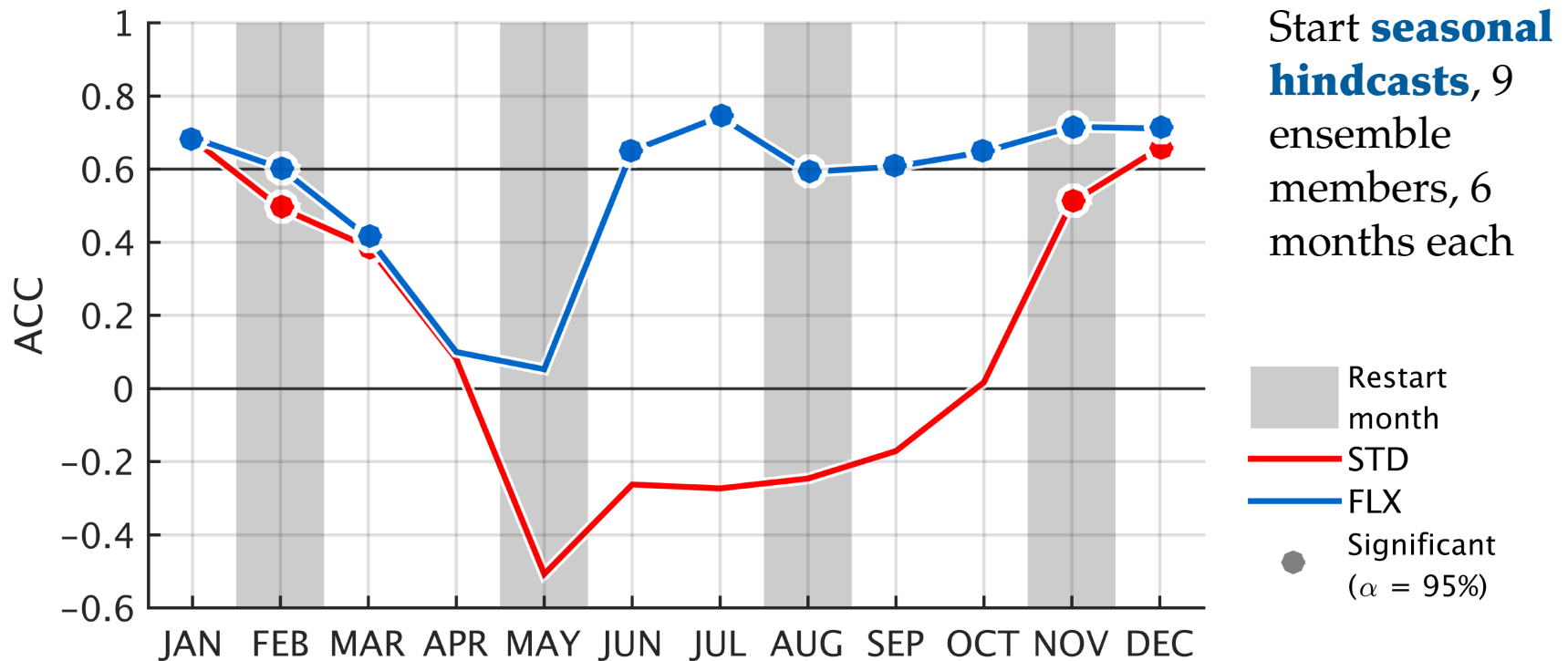
## Surface Heat Flux Correction



## Bias correction improves summer variability in the assimilation runs

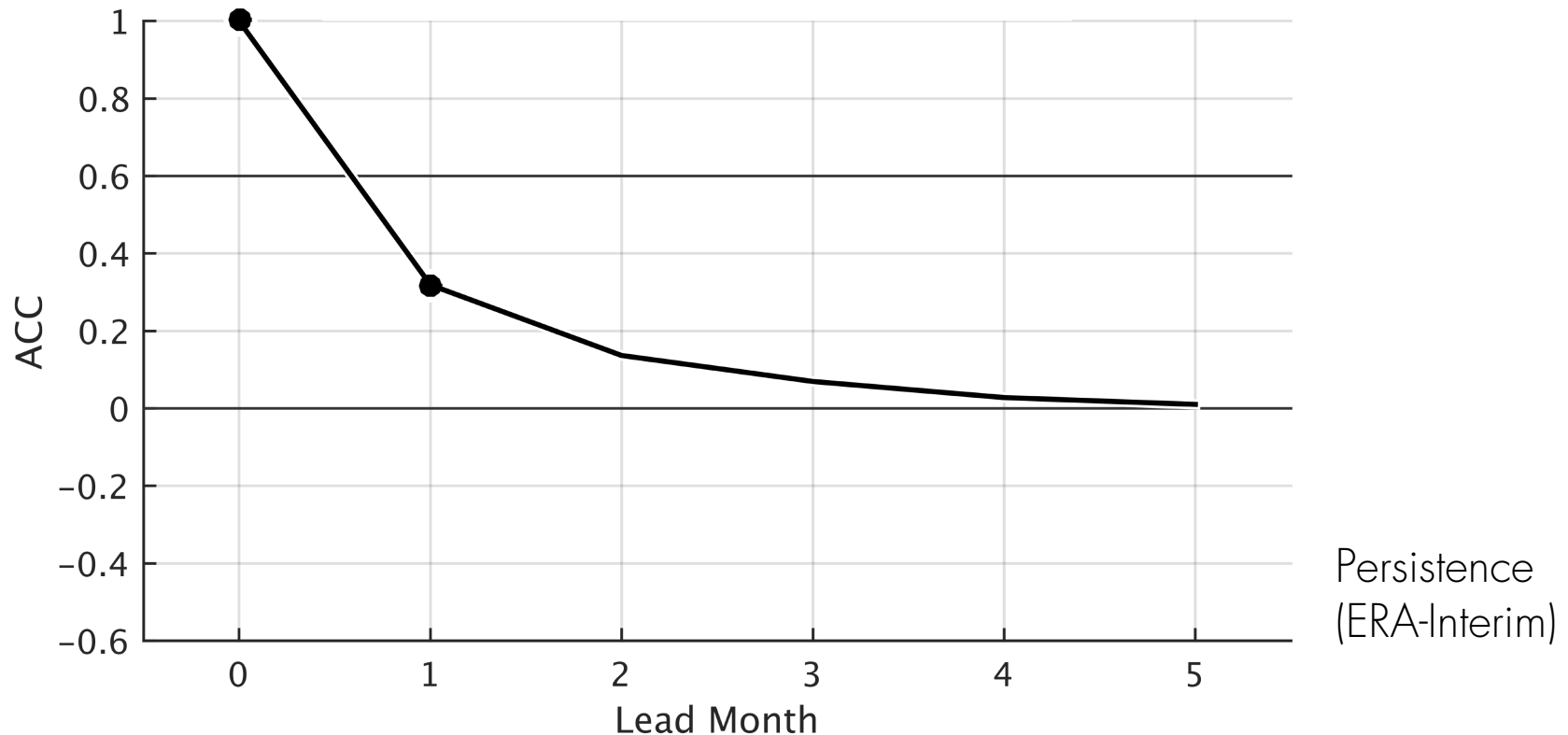


## Impact on Forecast Skill?

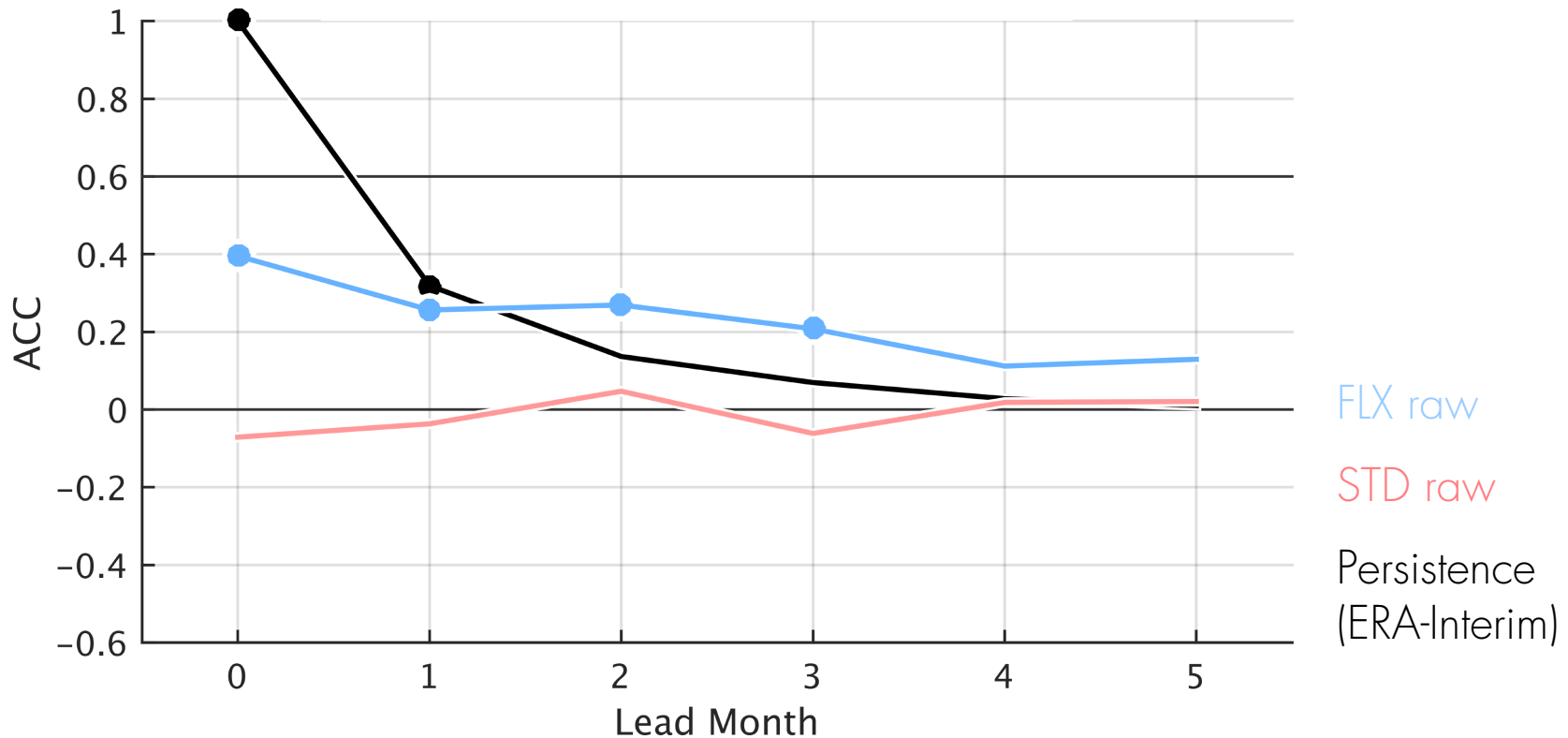




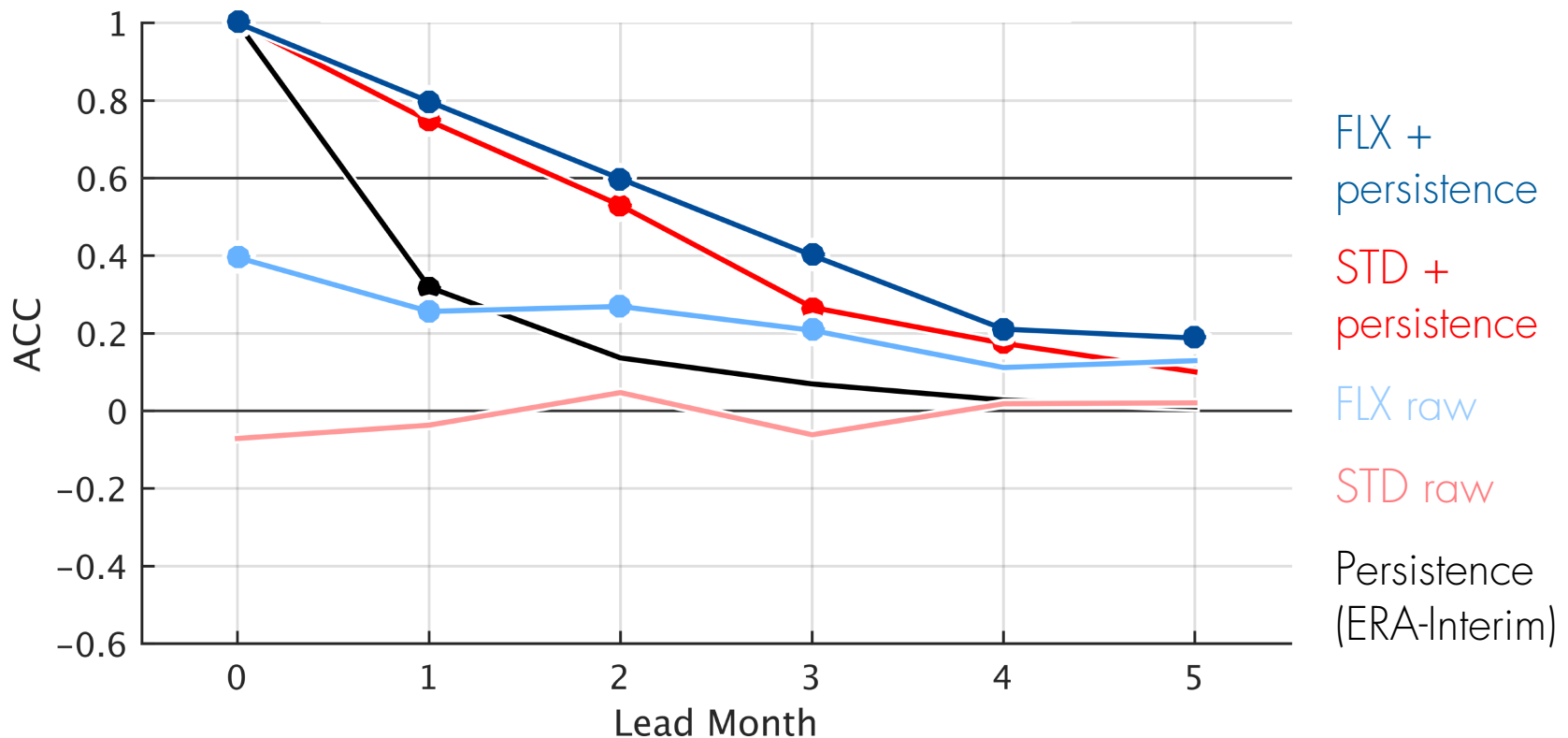
## Hindcast Skill



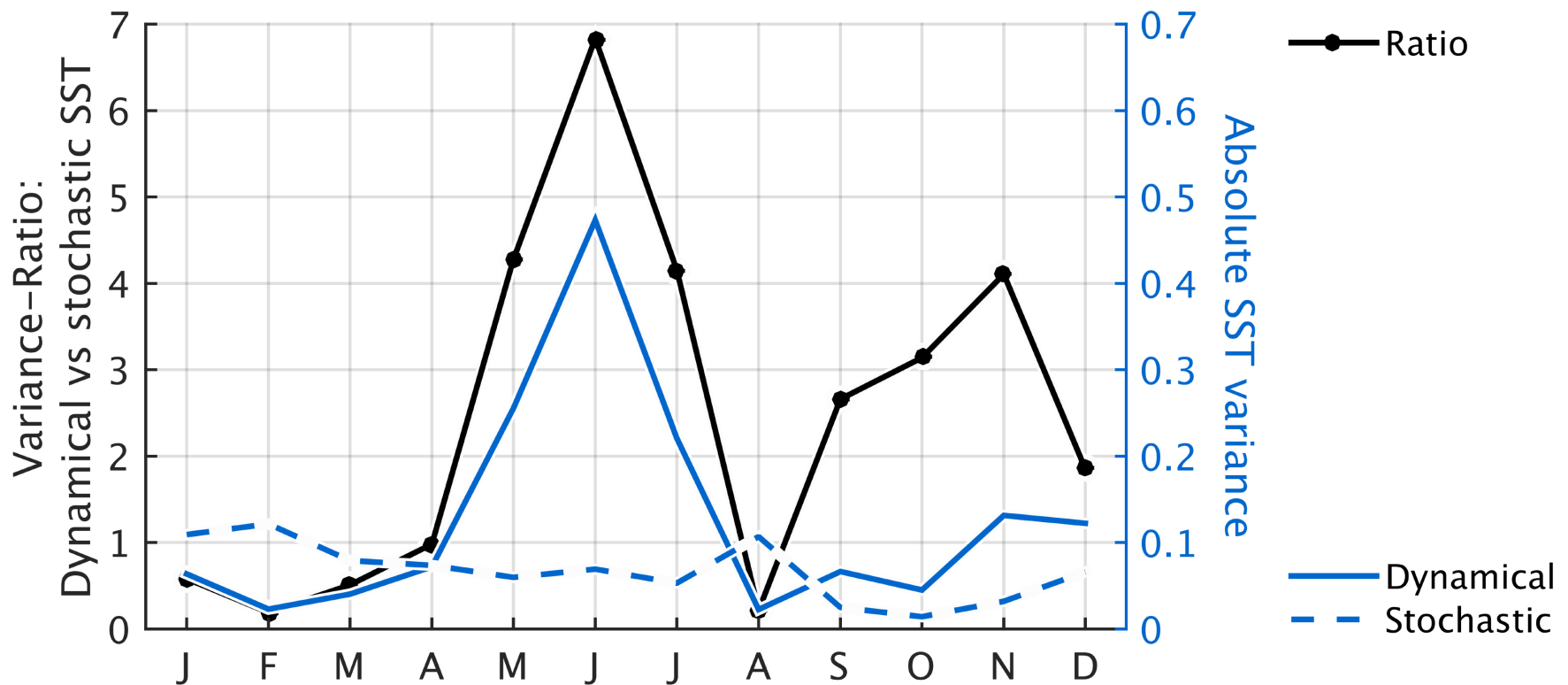
## Hindcast Skill



## Hindcast Skill



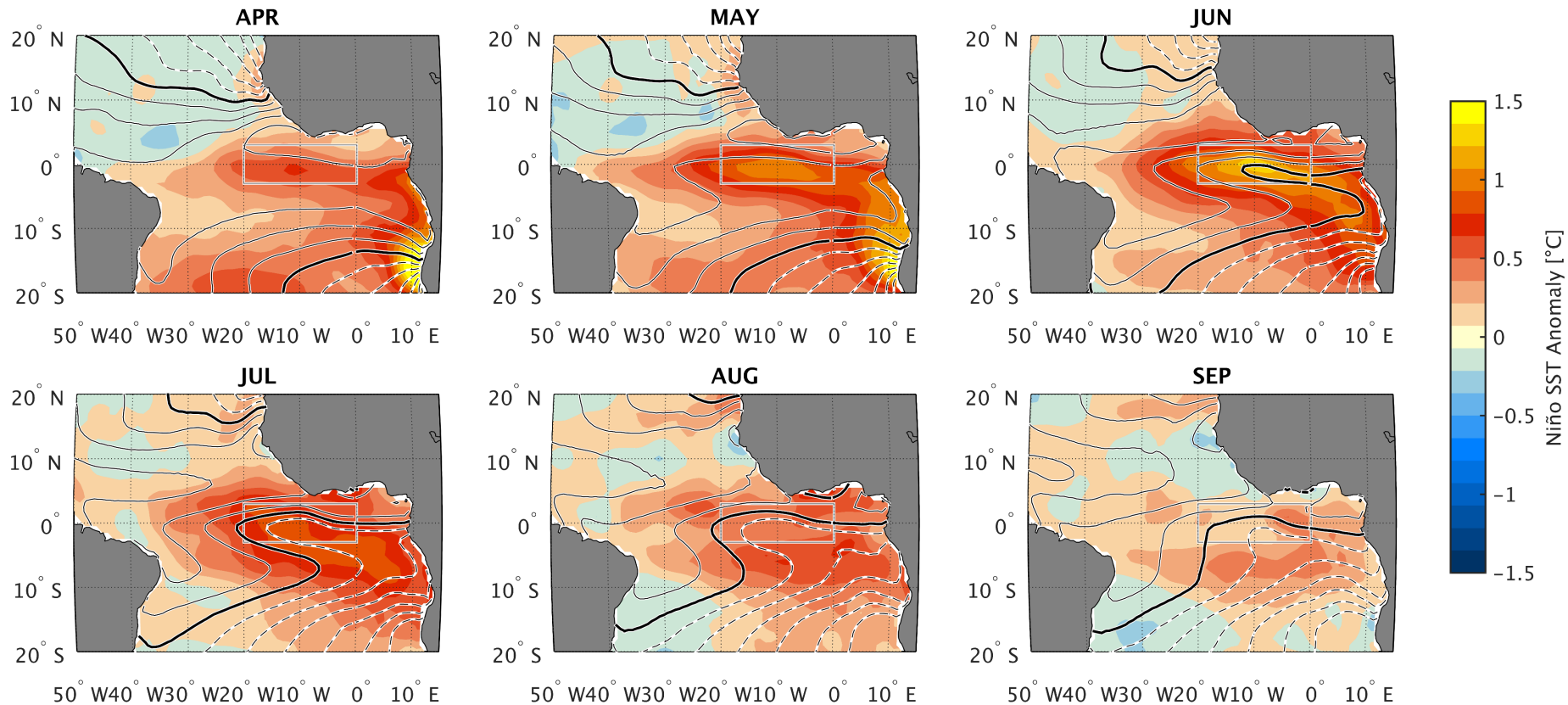
## Observed Atl3 SST predictability limits



## Take-Home Message

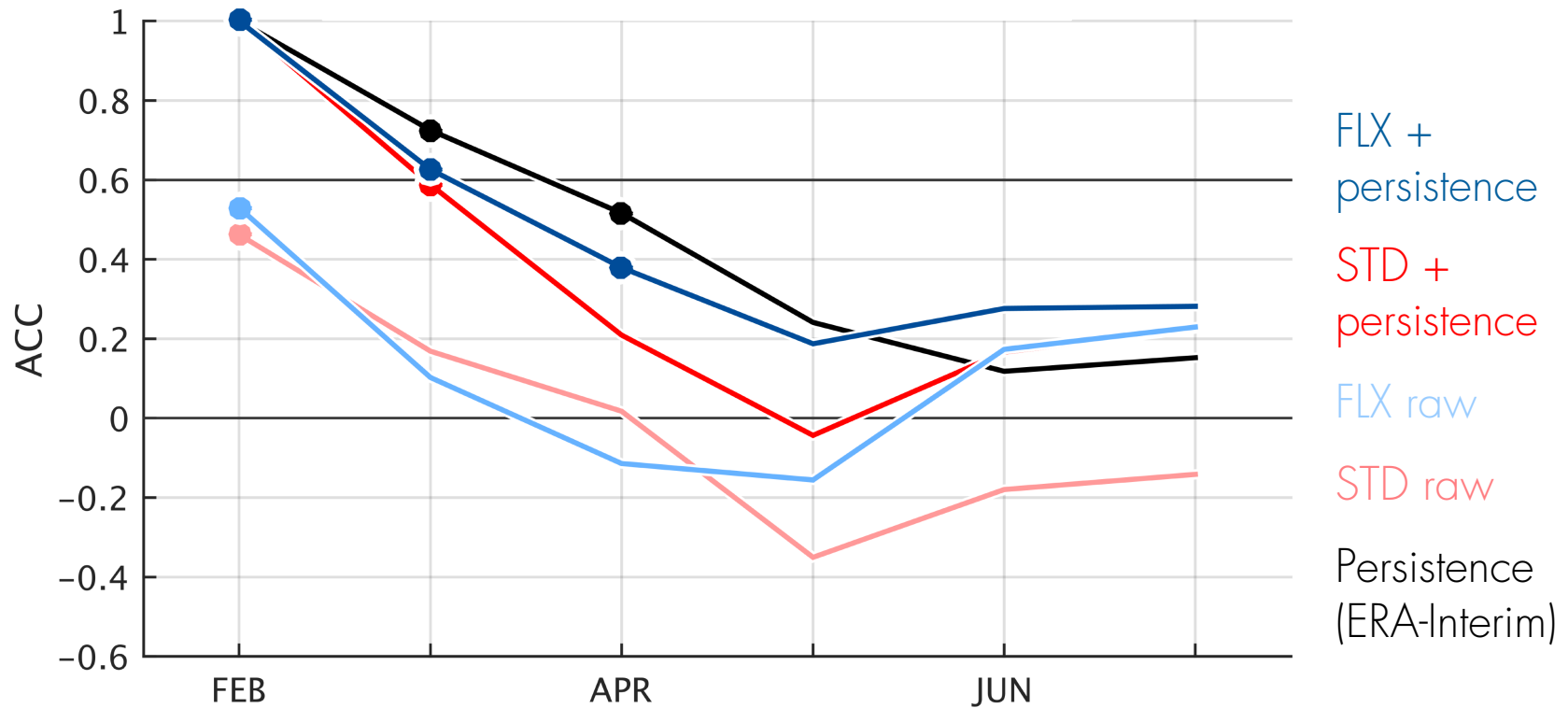
1. The **Atlantic Niño** is the dominant mode of interannual SST variability in the equatorial Atlantic.
2. SST **bias alleviation systematically improves** both the boreal summer initial conditions and seasonal hindcasts.
3. Incorporating persistence skill into dynamical forecasts allows for **useful forecasts 2-3 months ahead**.
4. Stochastic processes suggest that **SST predictions for JFM and August are greatly impaired**.

# The Atlantic Niño: Composite evolution

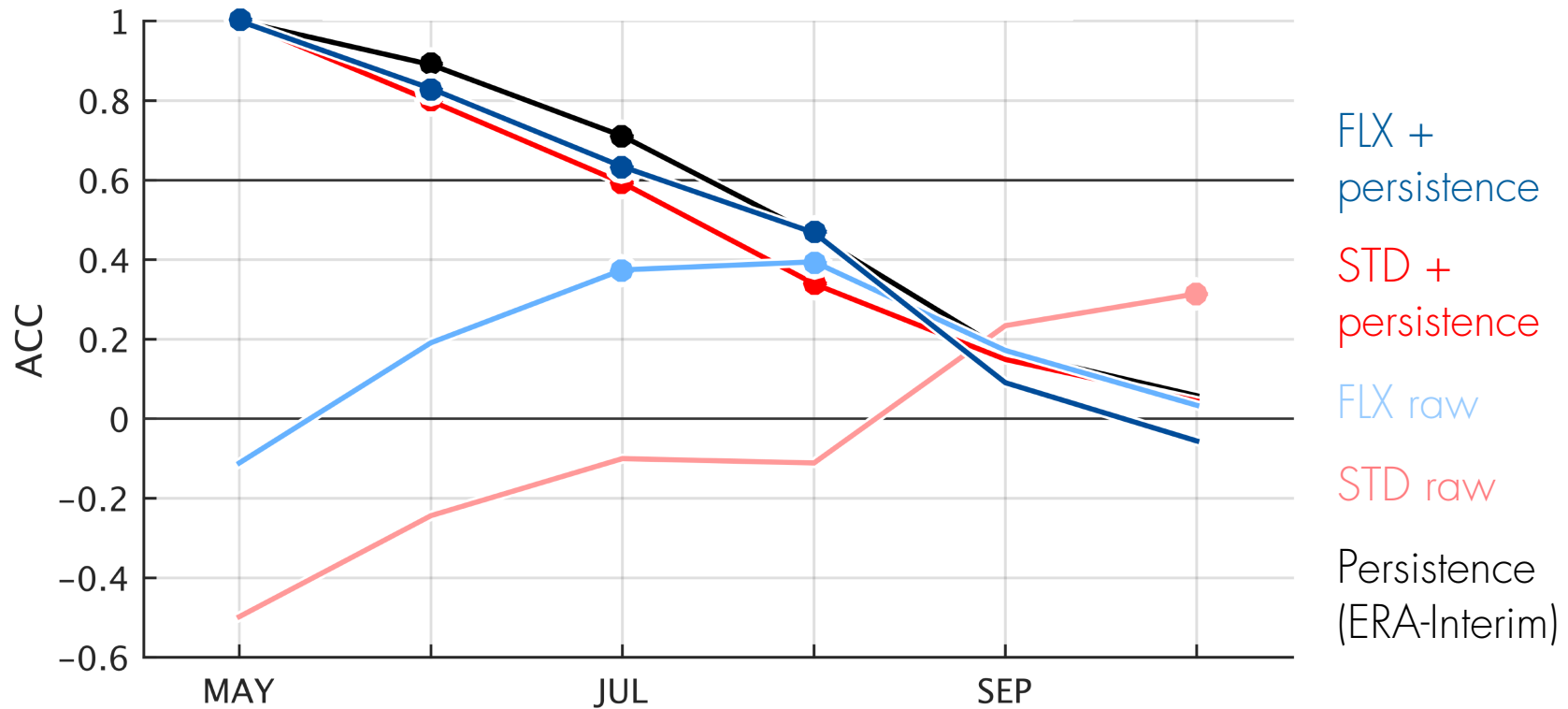




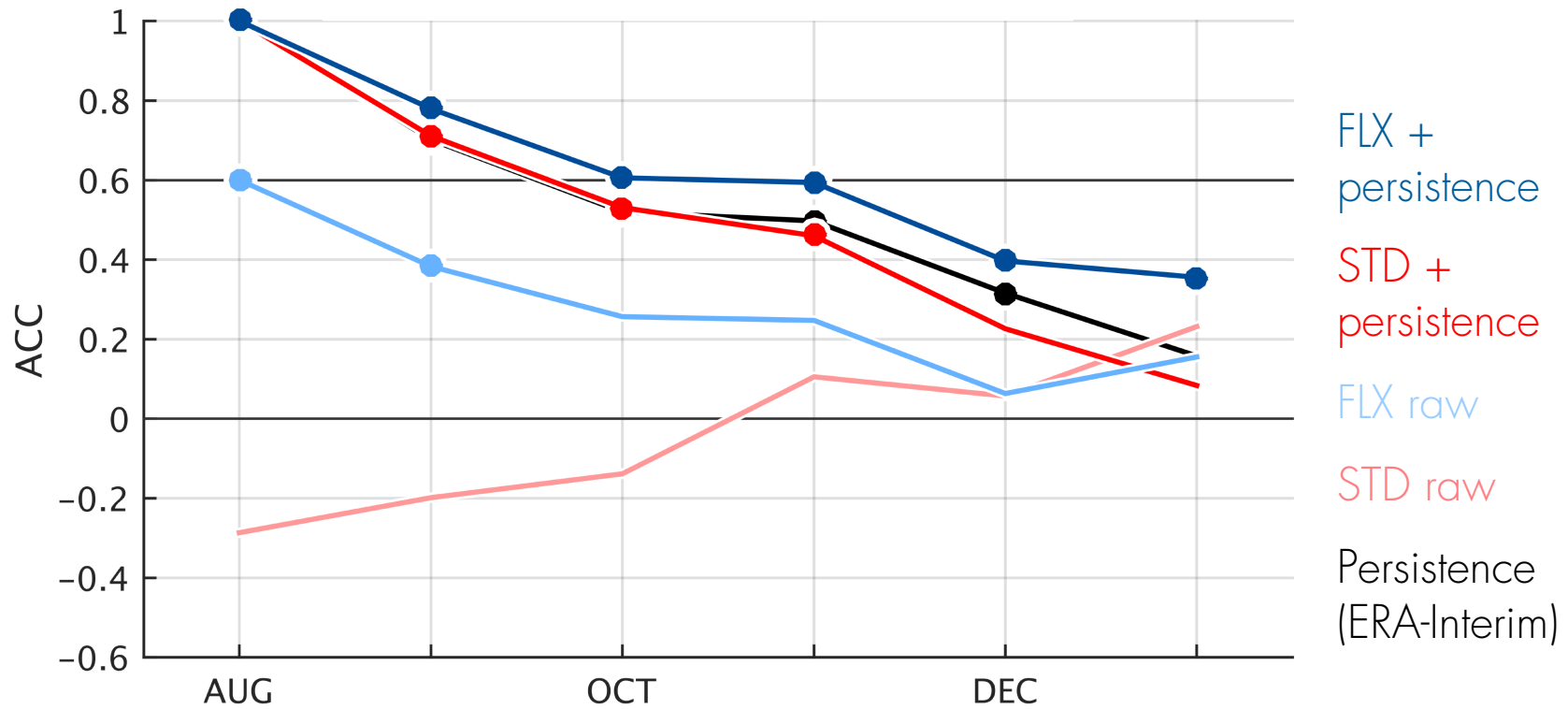
## Hindcast Skill: February



## Hindcast Skill: May



## Hindcast Skill: August



## Hindcast Skill: November

