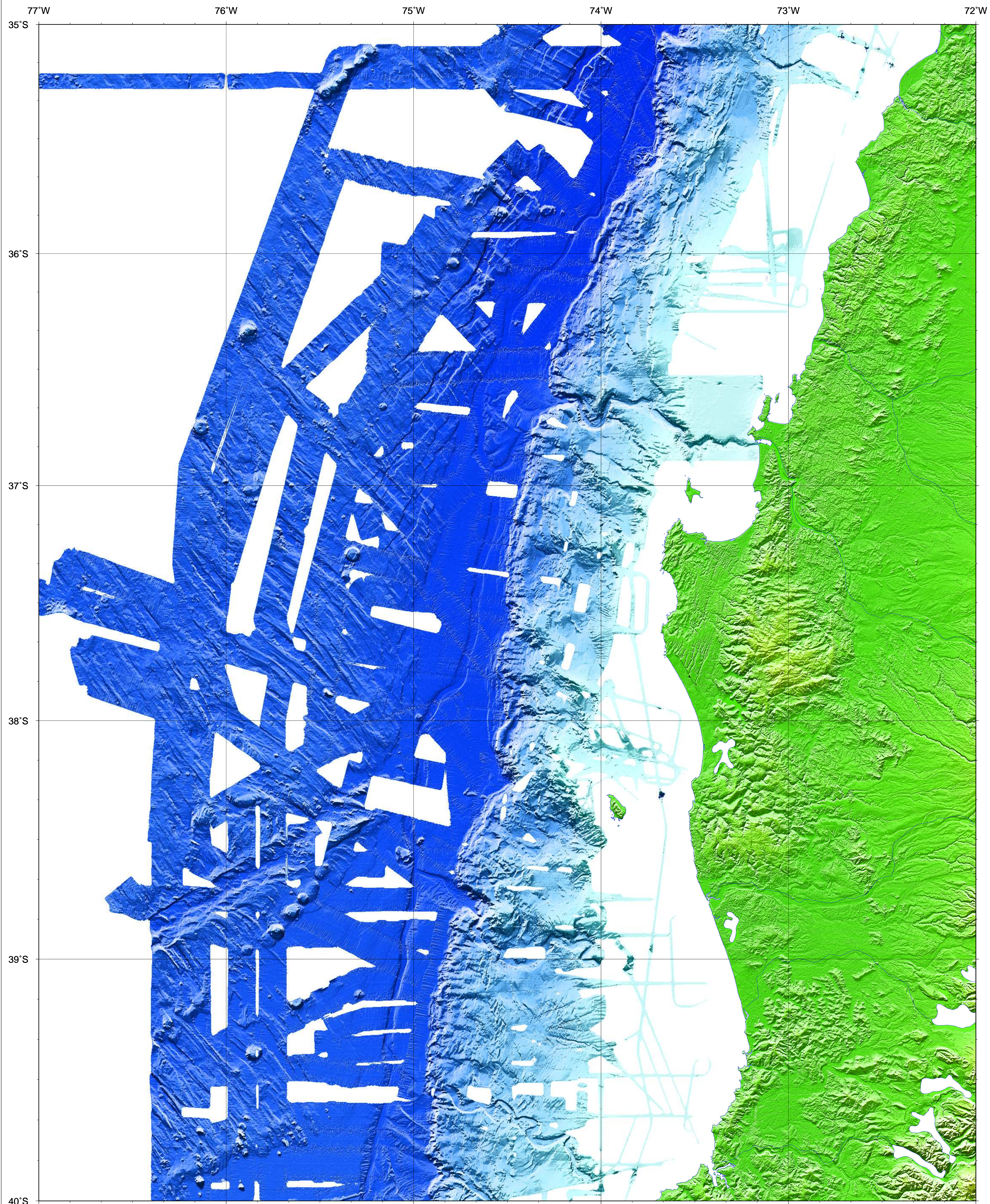
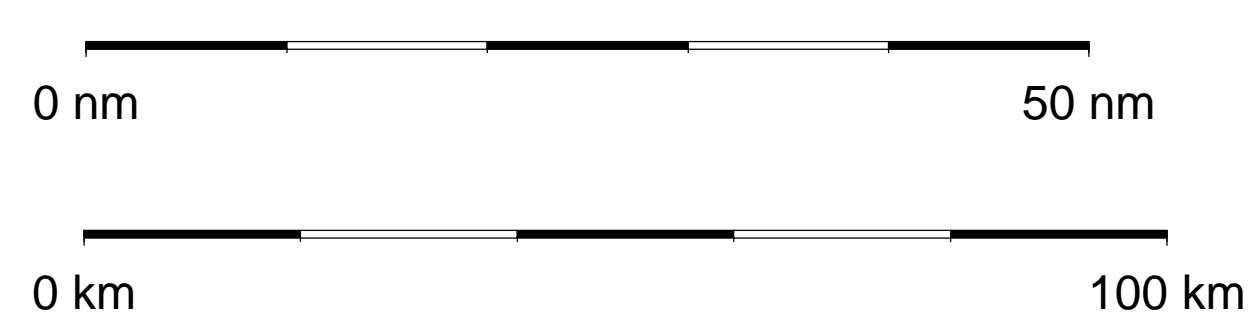


# BATHYMETRIC CHART OF THE SOUTH EAST PACIFIC



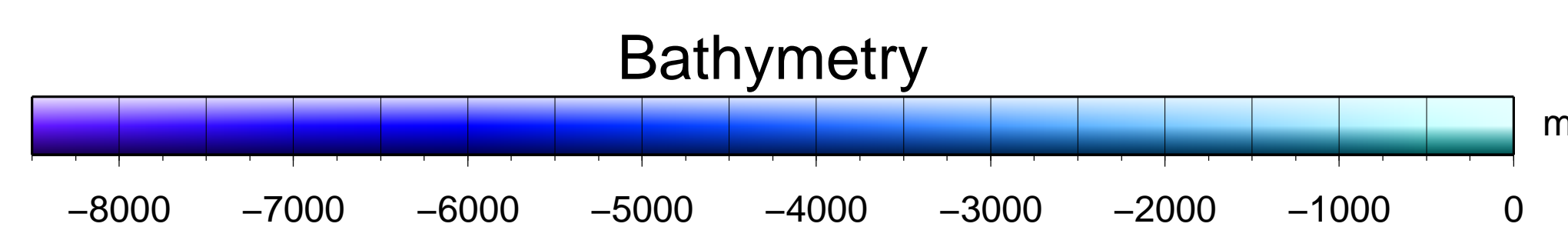
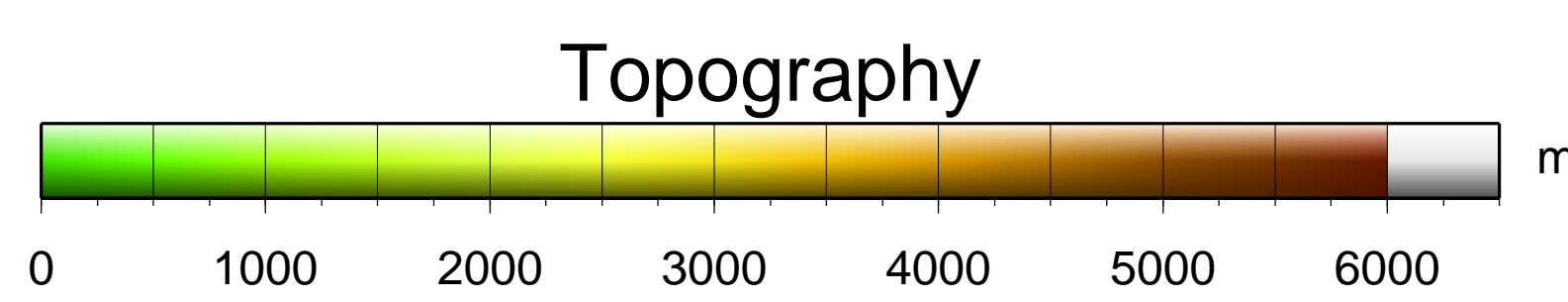
## MAP SHEET s40w77



Scale 1:700000  
Universal Mercator Projection, reference latitude 37.5°S

Bathymetric data compiled from multibeam surveys  
RV SONNE (SO102, SO161, SO181, SO210)  
RV METEOR (M67/1)  
R.R.S. James Cook (JC23)  
RV Vidal Gormaz

Topographic data: SRTM3



Data Processing  
Multibeam data processing and calculation of Digital Terrain Model:  
MB-System (<http://www.mbari.org/data/mbsystem>)  
Data presentation and plotting: GMT (<http://gmt.soest.hawaii.edu/>)  
DTM of bathymetry: regular grid 200 m x 200 m  
DTM of topography: regular grid 90 m x 90 m

Acknowledgements  
The research cruises had been funded by the German Federal Ministry of Education and Research (BMBF), the German Science Foundation (DFG) and FONDEF in Chile

