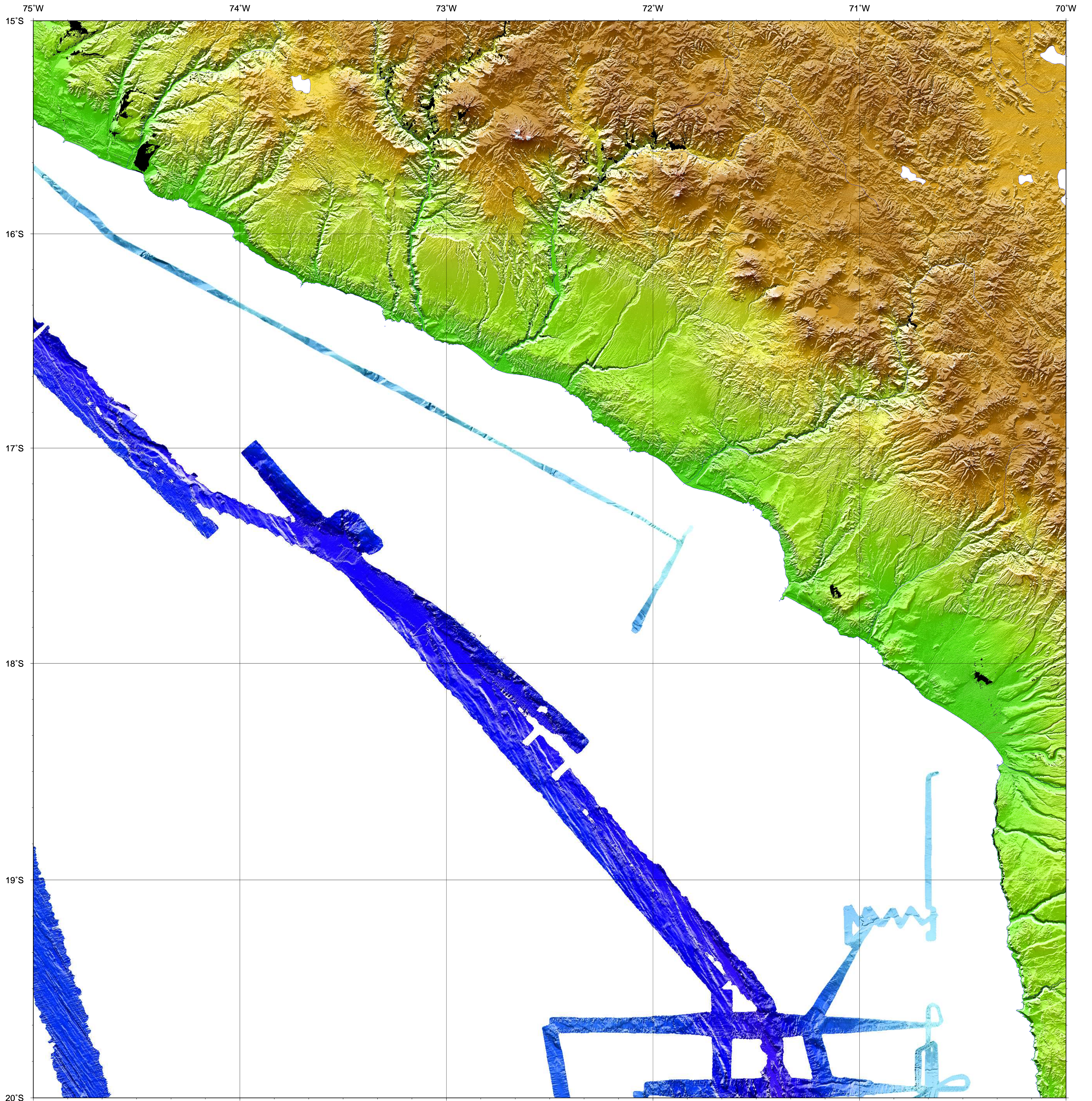
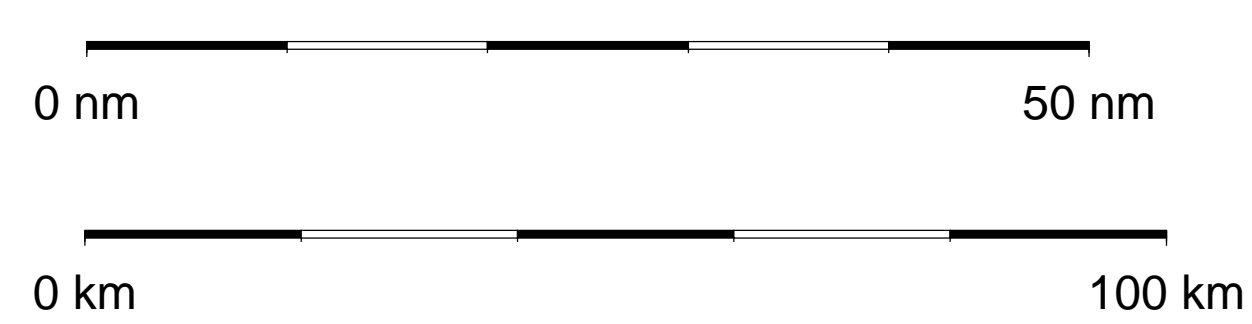


BATHYMETRIC CHART OF THE SOUTH EAST PACIFIC



MAP SHEET s20w75



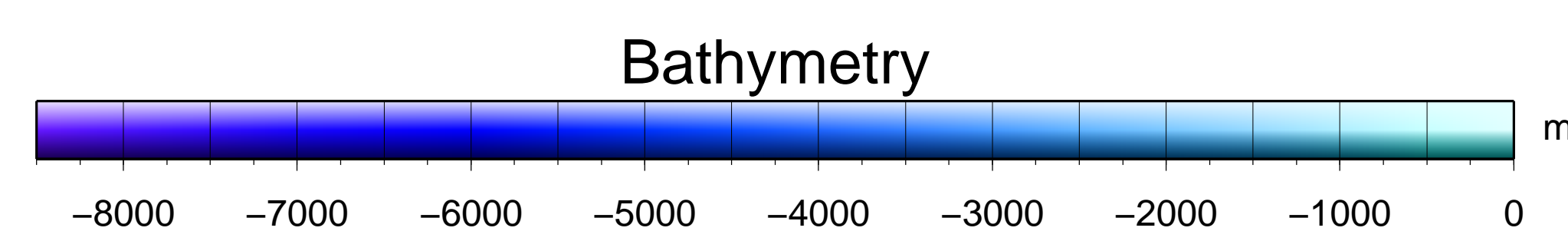
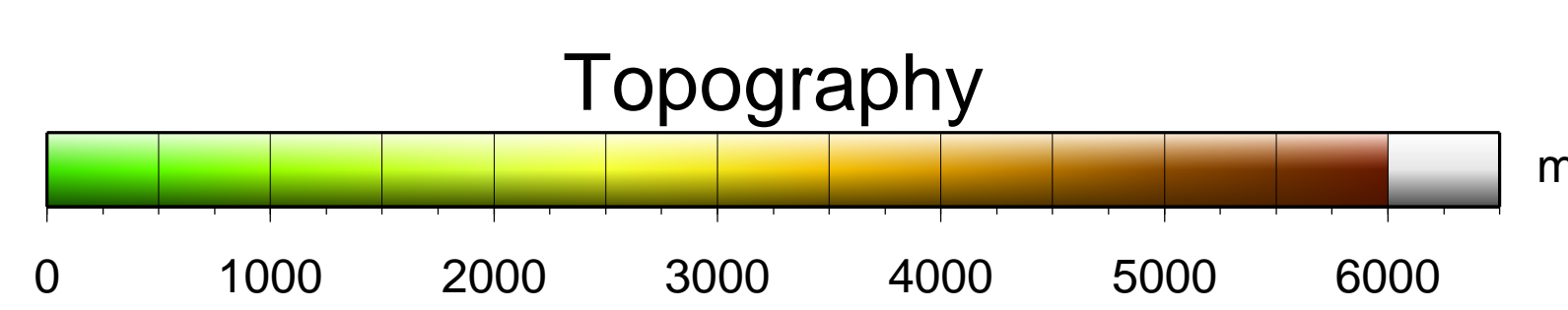
Scale 1:700000

Universal Mercator Projection, reference latitude 17.5°S

Bathymetric data compiled from multibeam surveys

RV SONNE (SO104, SO146, SO147, SO162, SO209)
RV METEOR (M77/1)

Topographic data: SRTM3



Data Processing

Multibeam data processing and calculation of Digital Terrain Model:
MB-System (<http://www.mbari.org/data/mbsystem>)
Data presentation and plotting: GMT (<http://gmt.soest.hawaii.edu/>)
DTM of bathymetry: regular grid 200 m x 200 m
DTM of topography: regular grid 90 m x 90 m

Acknowledgements

The research cruises had been funded by the German Federal Ministry of Education and Research (BMBF), the German Science Foundation (DFG) and FONDEF in Chile

