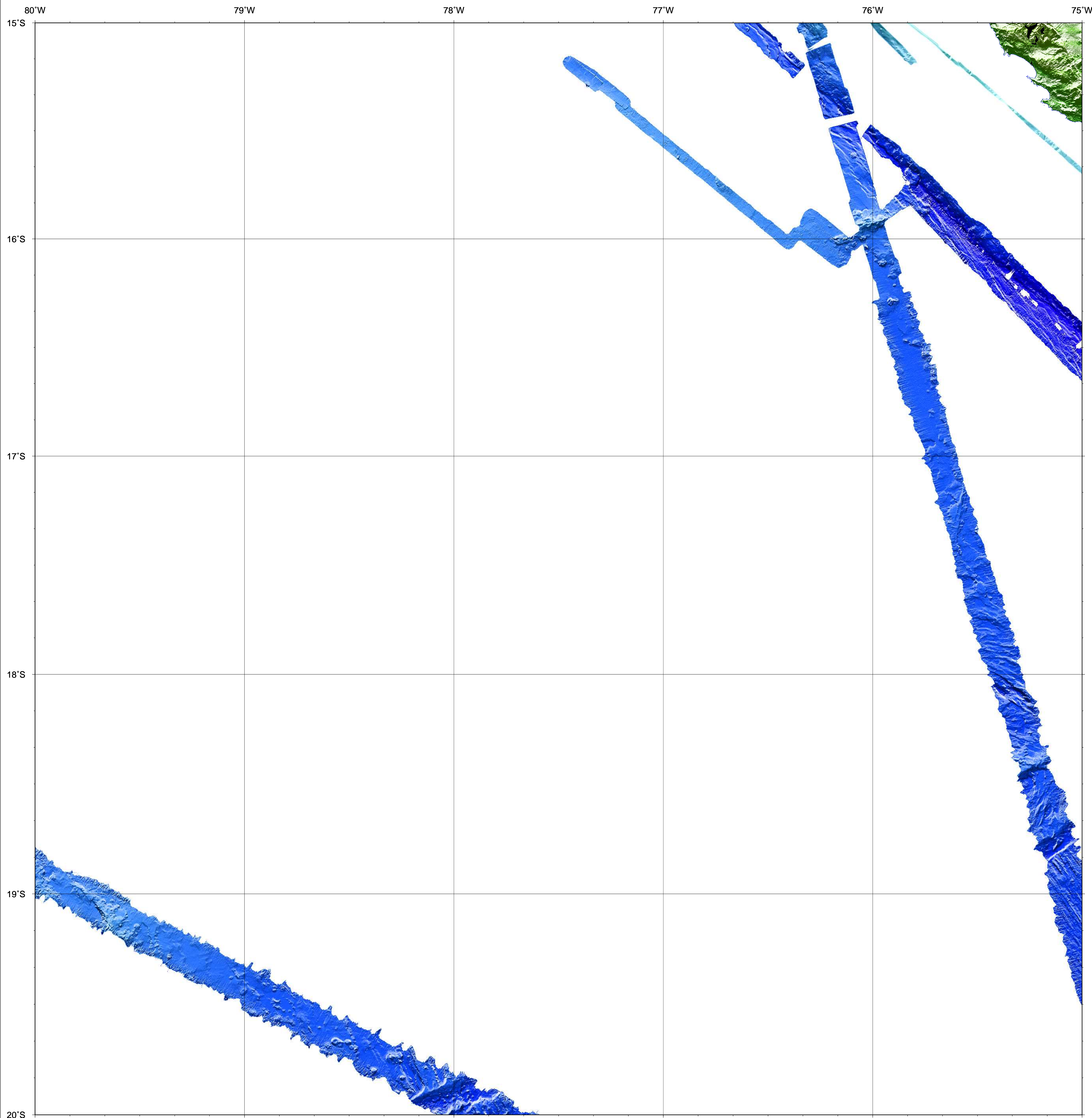
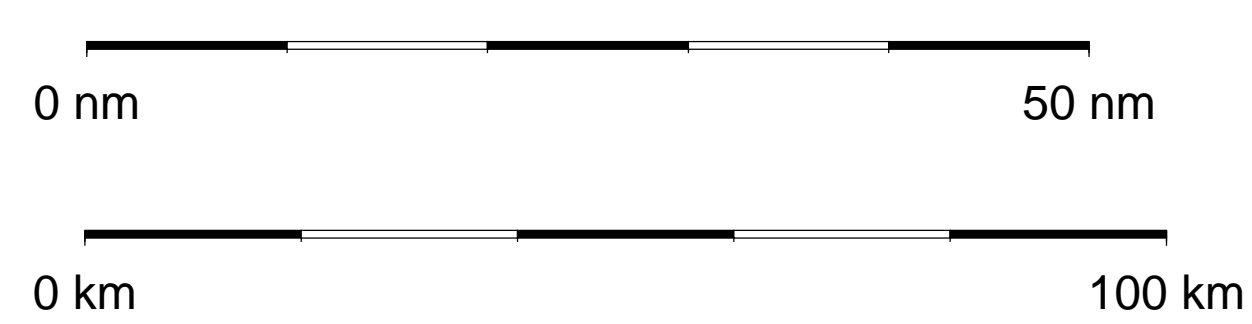


BATHYMETRIC CHART OF THE SOUTH EAST PACIFIC



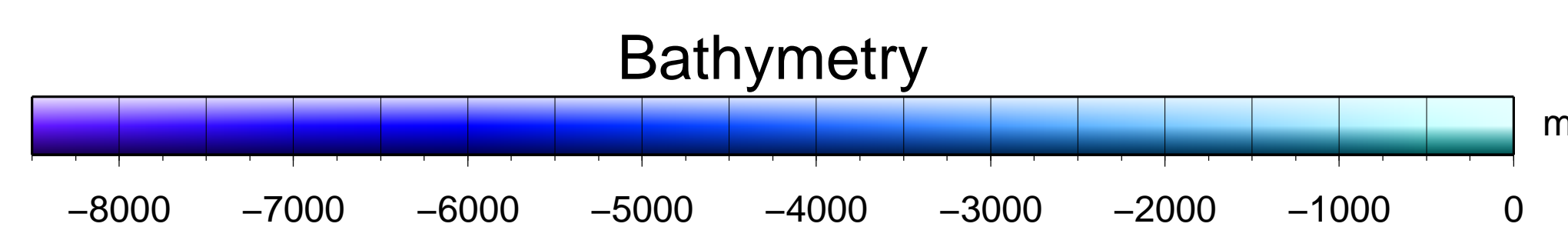
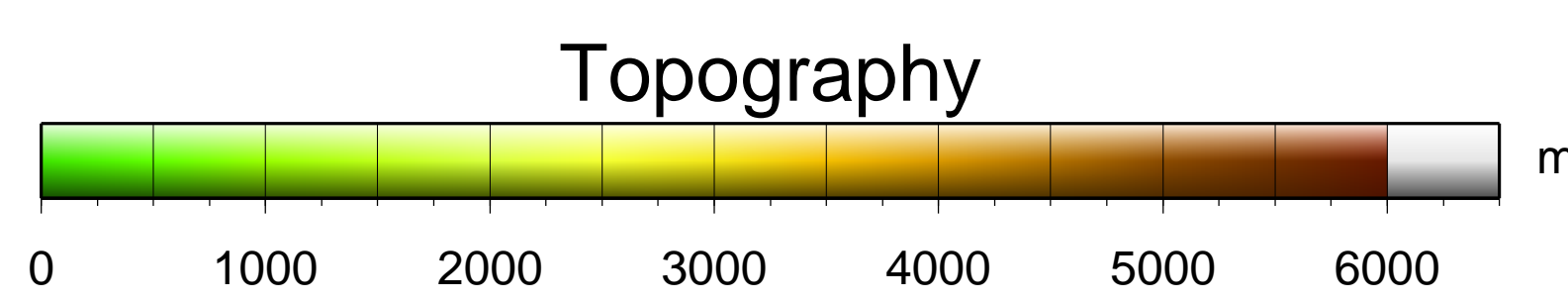
MAP SHEET s20w80



Scale 1:700000
Universal Mercator Projection, reference latitude 17.5°S

Bathymetric data compiled from multibeam surveys
RV SONNE (SO146, SO160, SO162, SO209)
RV METEOR (M77/1, M77/2)

Topographic data: SRTM3



Data Processing
Multibeam data processing and calculation of Digital Terrain Model:
MB-System (<http://www.mbari.org/data/mbsystem>)
Data presentation and plotting: GMT (<http://gmt.soest.hawaii.edu/>)
DTM of bathymetry: regular grid 200 m x 200 m
DTM of topography: regular grid 90 m x 90 m

Acknowledgements
The research cruises had been funded by the German
Federal Ministry of Education and Research (BMBF),
the German Science Foundation (DFG) and FONDEF in Chile

