

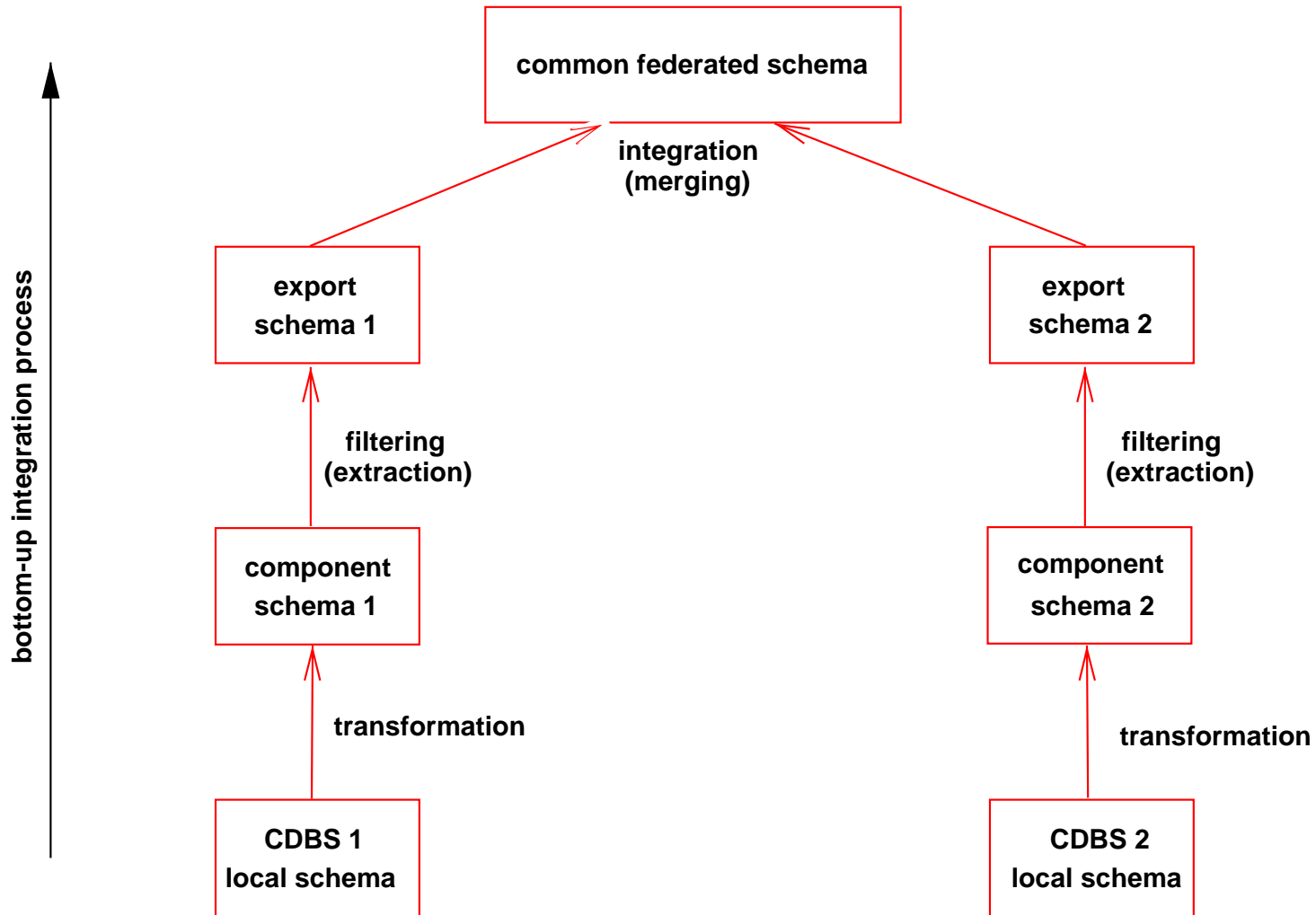
# On The Process of Systems Integration

Wilhelm (Willi) Hasselbring  
Infolab, Tilburg University

Viewpoints:

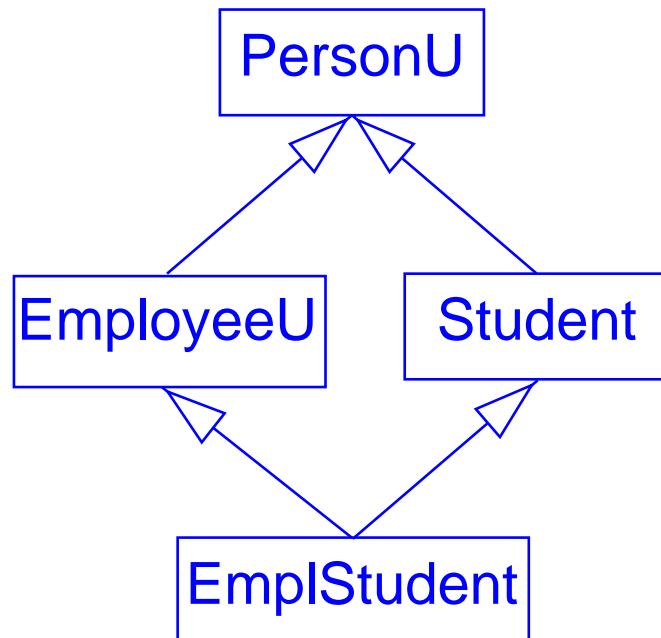
- Traditional bottom-up integration
- Top-down integration
- Combined yo-yo approach

# Traditional Bottom-Up Integration

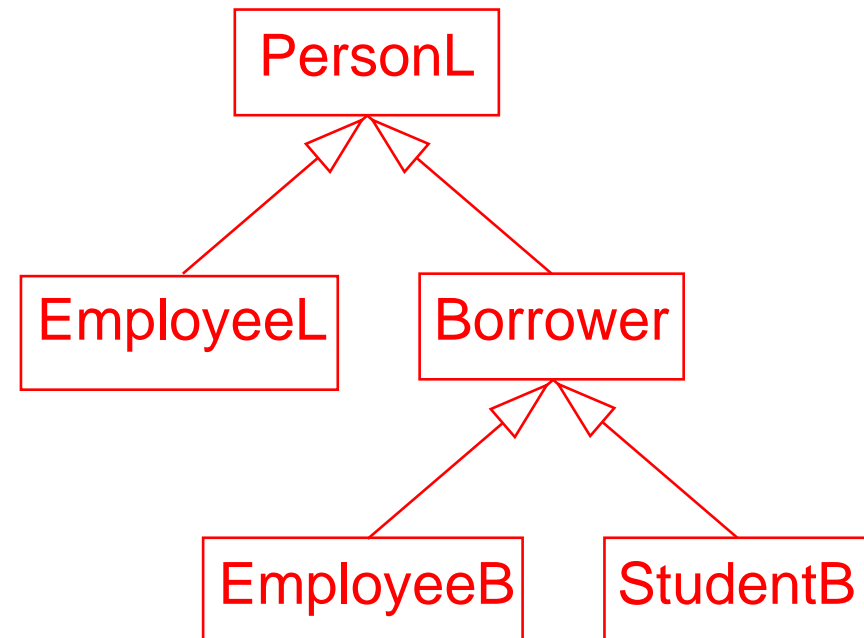


# Example: Two Local Schemas

University



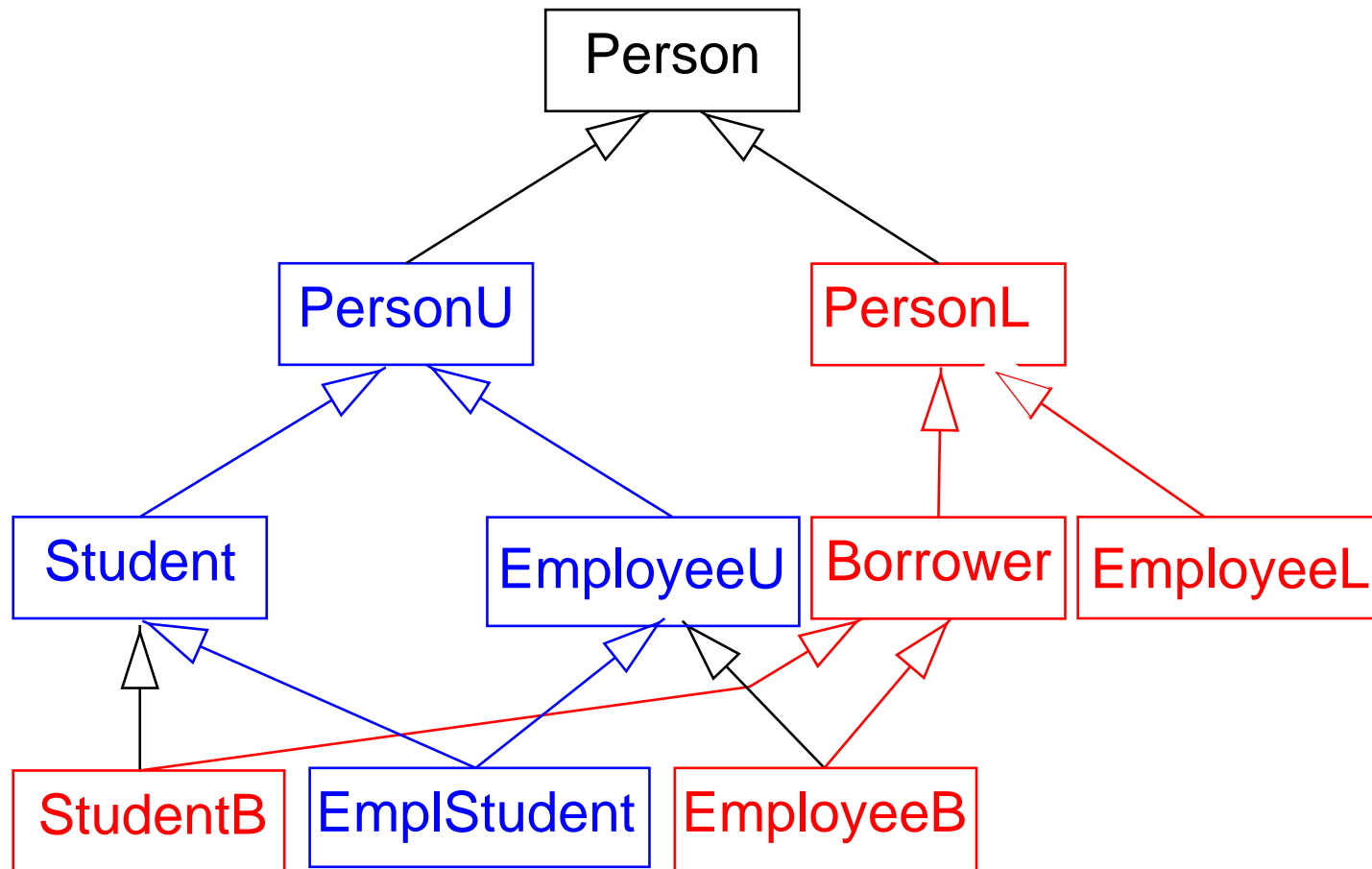
Library



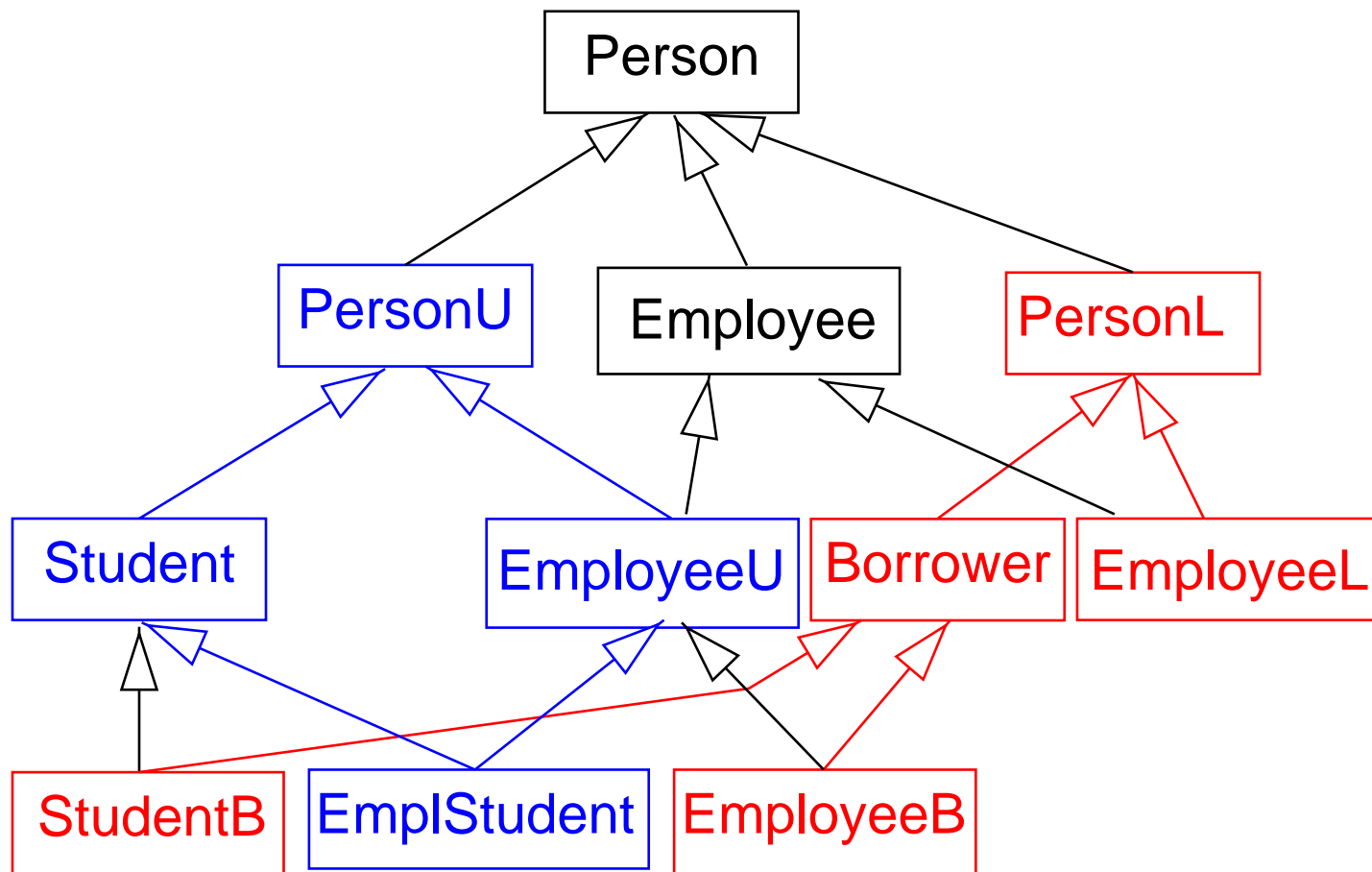
Assumptions: **PersonU** and **PersonL** do overlap; **EmployeeB** and **StudentB** are subsets of **EmployeeU** and **Student**, respectively.

Example adopted from Stefan Conrad: “Föderierte Datenbanksysteme”, Springer, 1997.

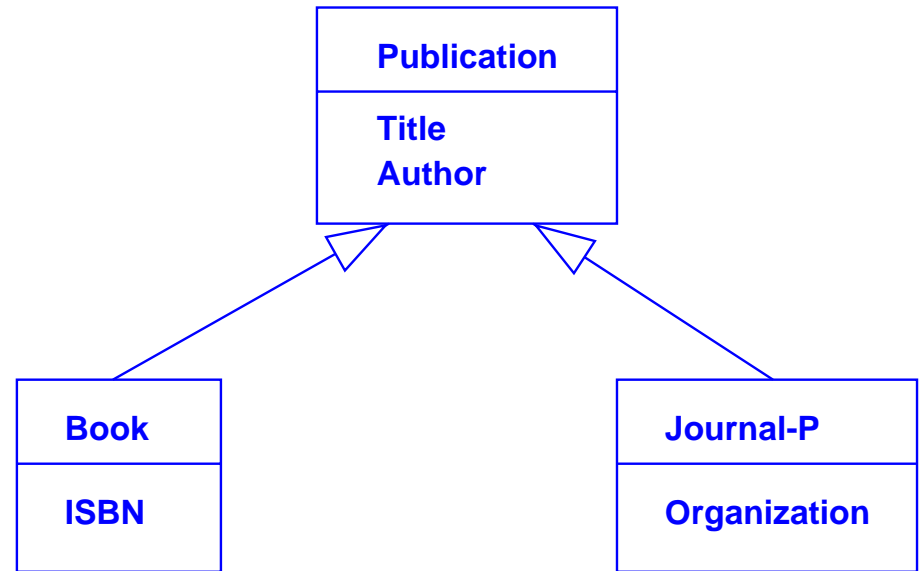
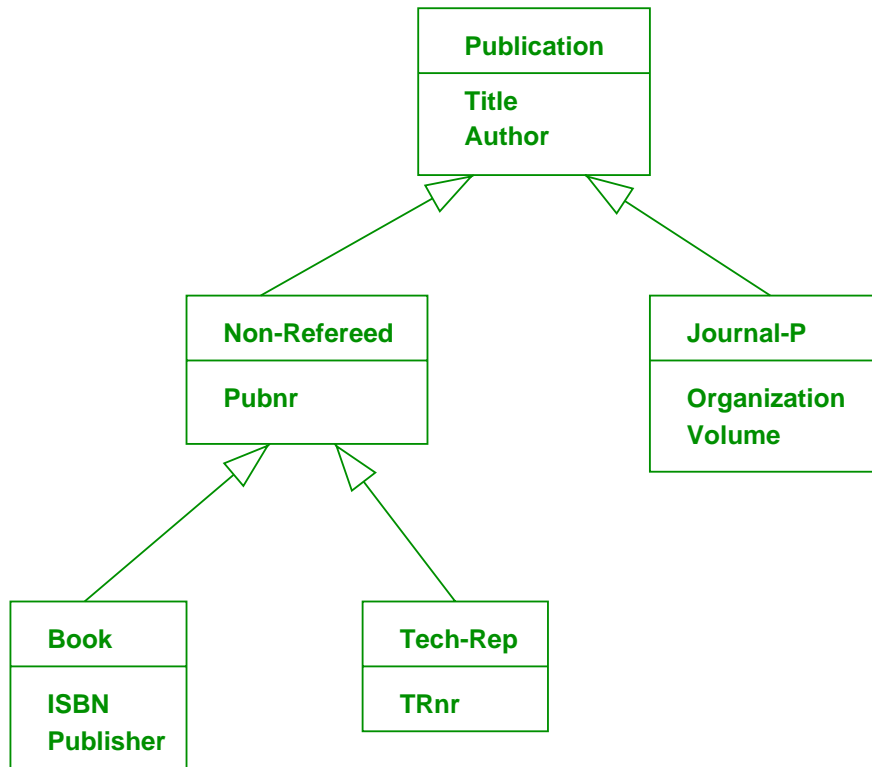
# Integration with the “Upward Inheritance Principle”



# Additional Assumption: Employees of the library are employees of the university



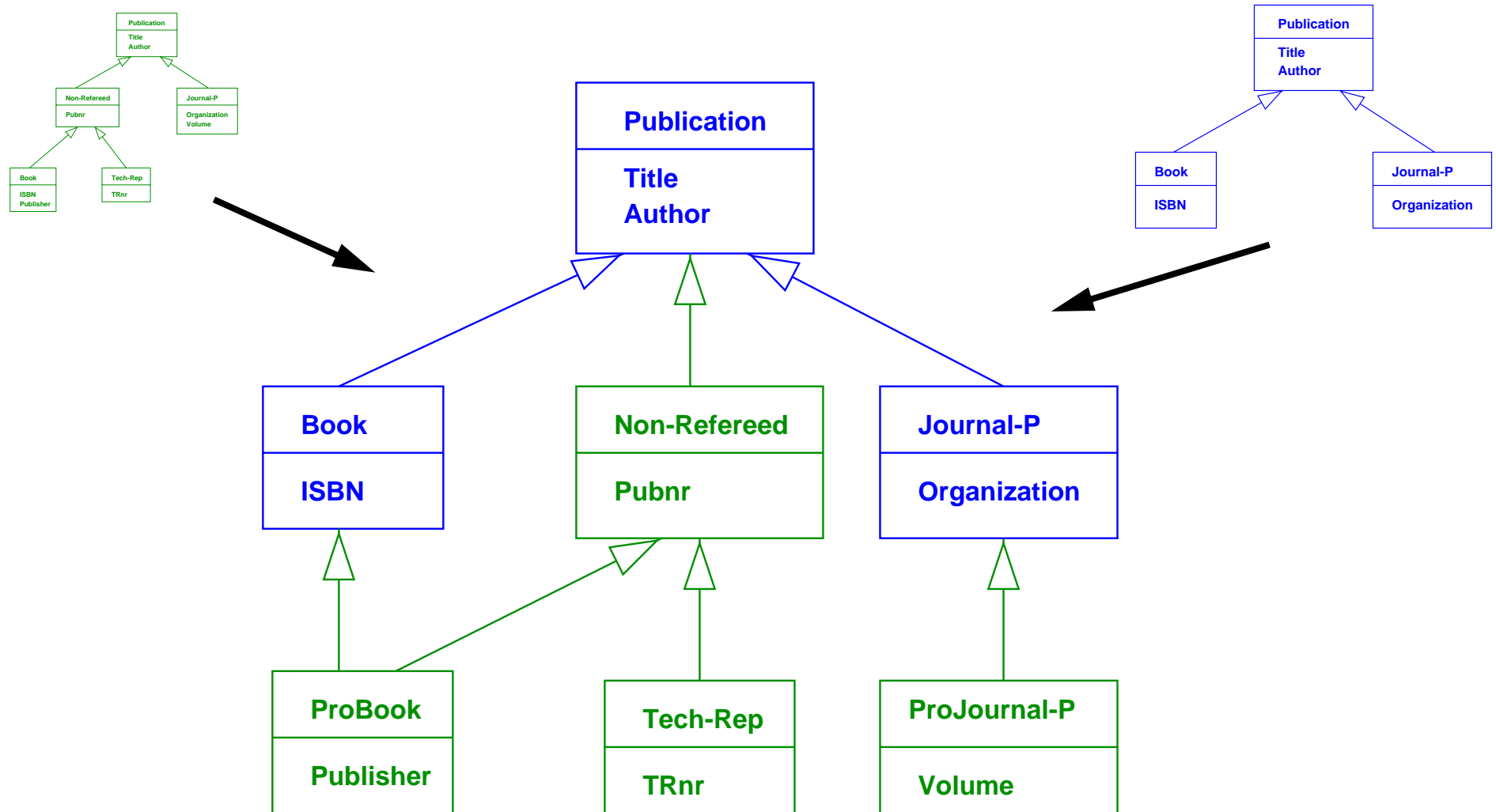
# Another Example



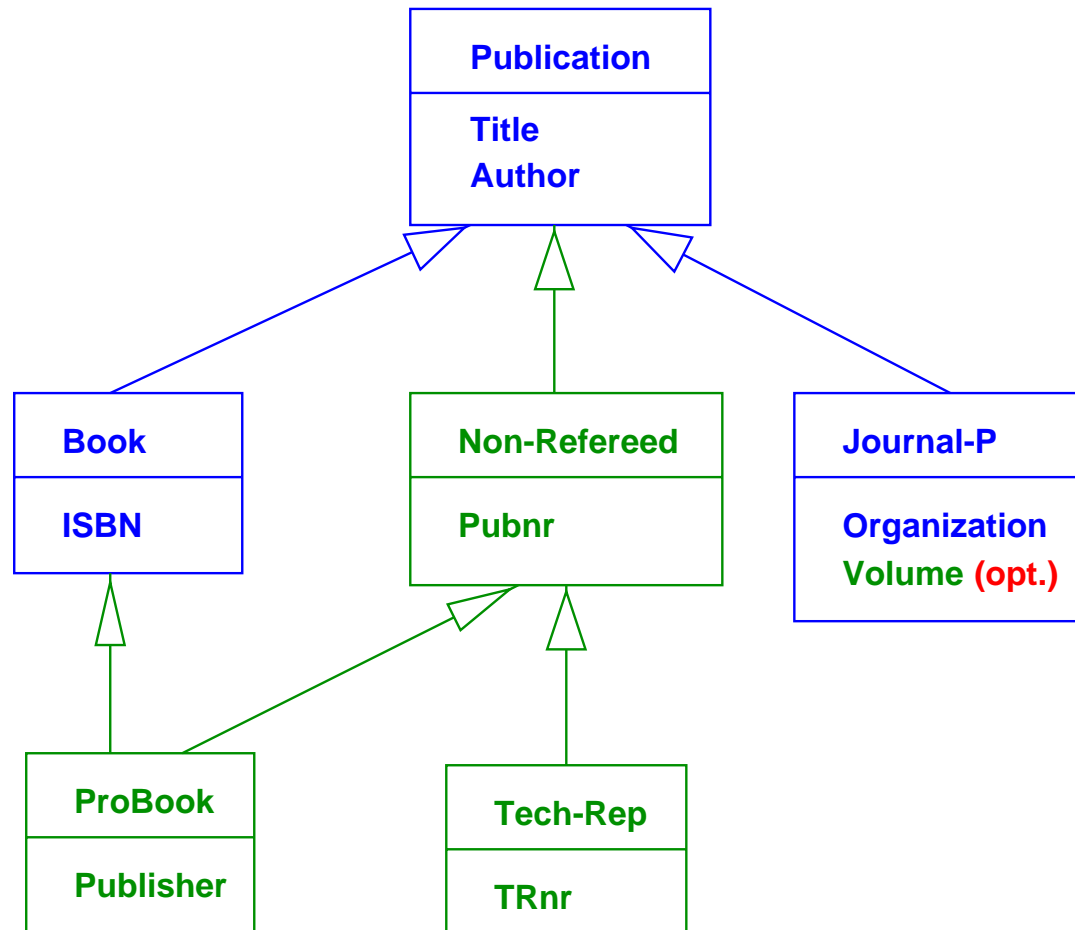
Adopted from:

Schmitt & Saake: "Merging Inheritance Hierarchies for Database Integration", CoopIS'98

# Initial Result of the Integration

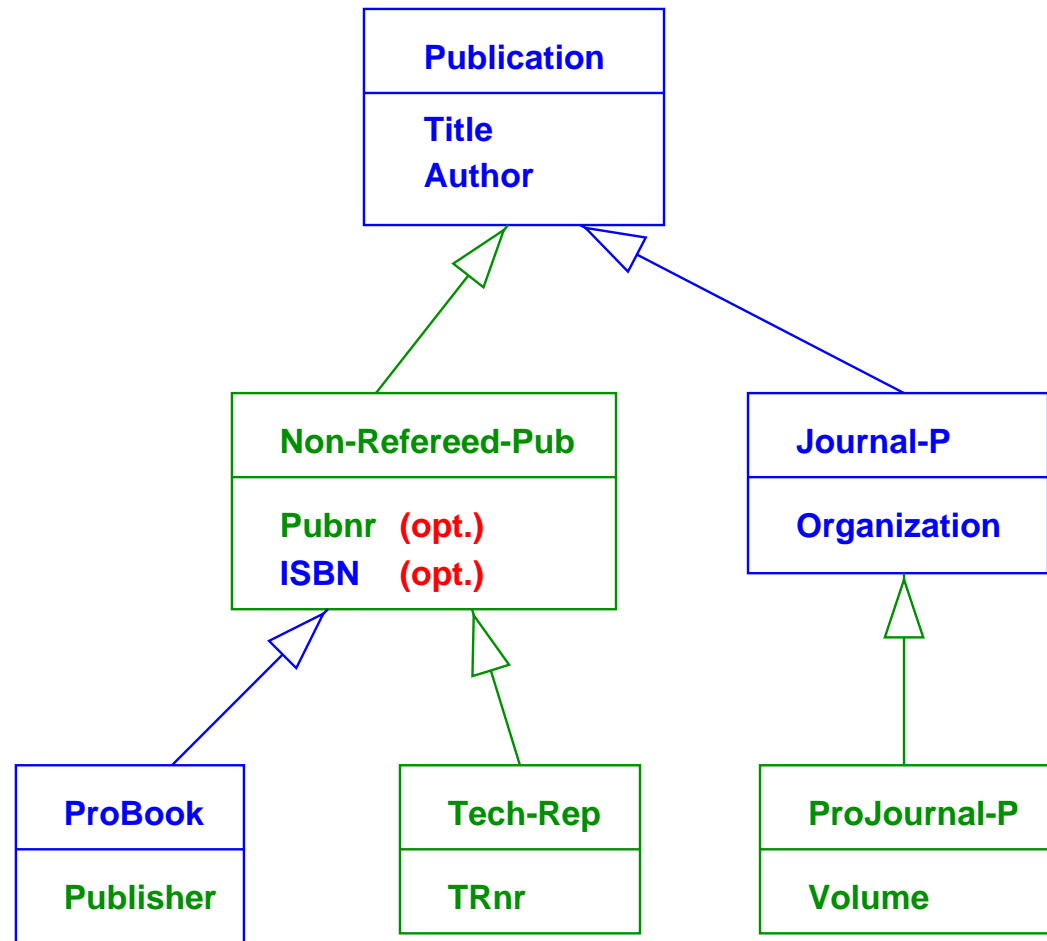


# Minimizing the number of classes through vertical merging

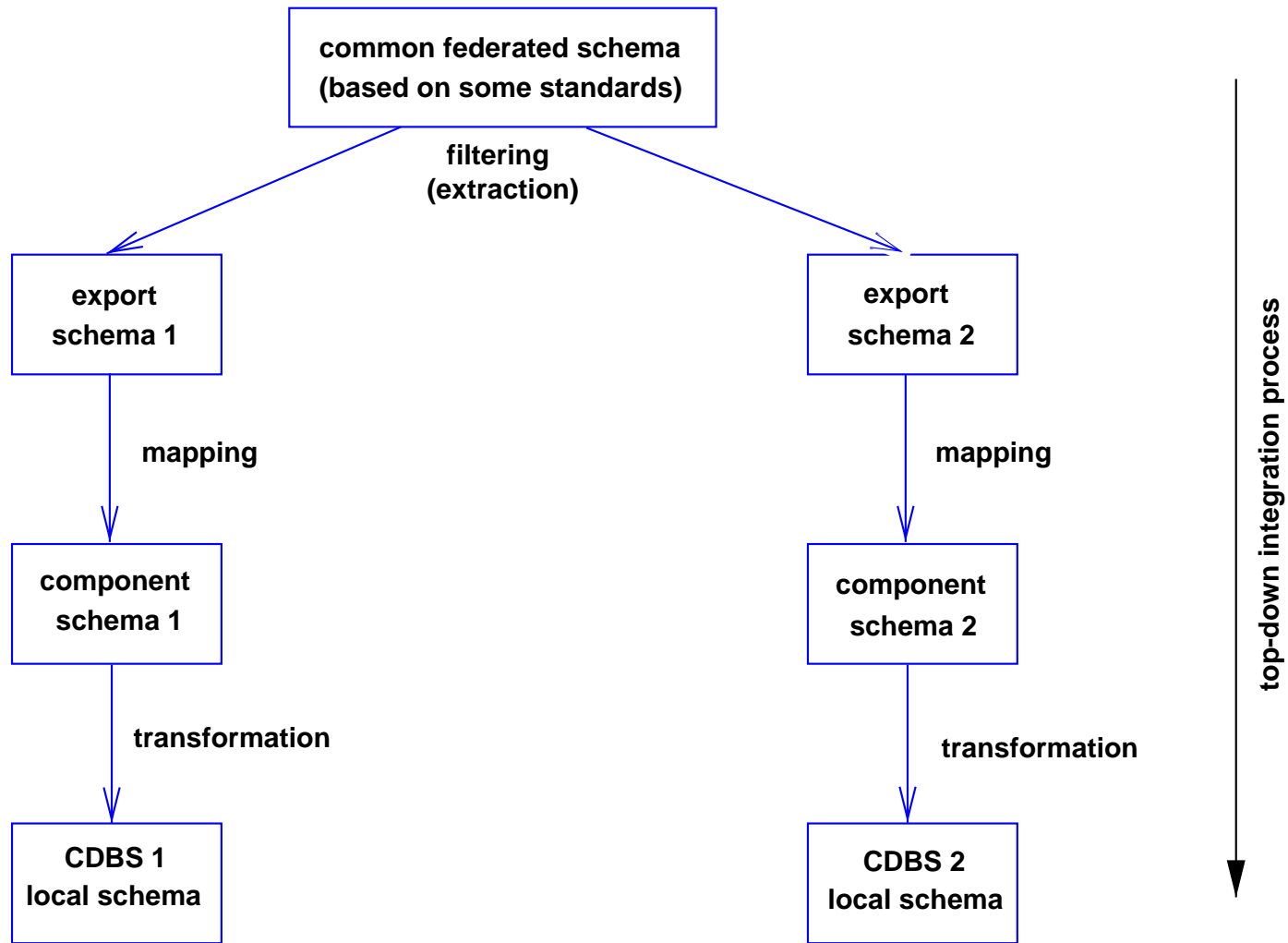




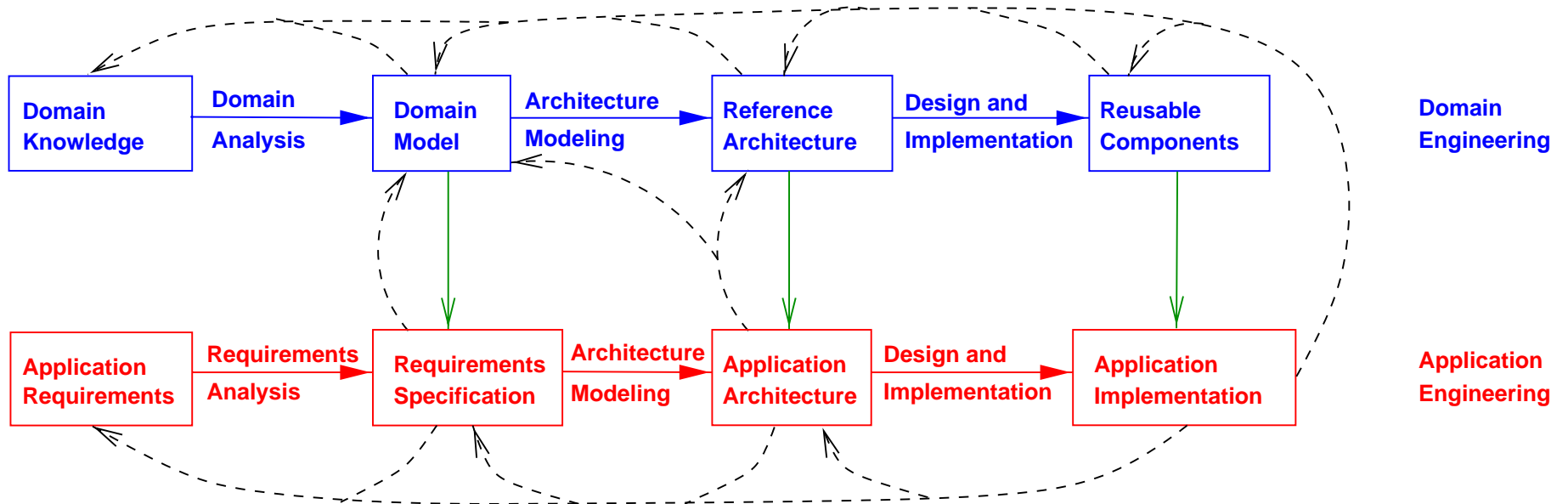
# Minimizing the number of classes through horizontal merging



# Top-Down Integration as an Alternative



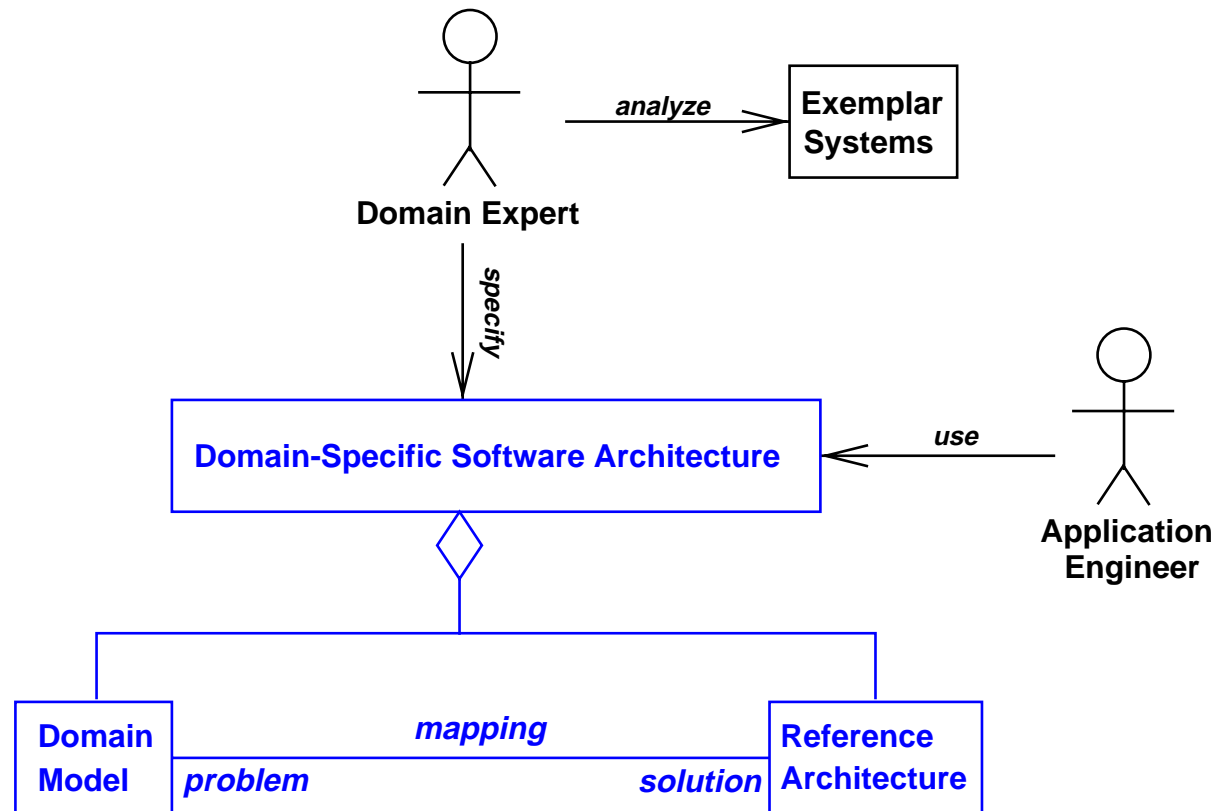
# Domain-Specific Software Architecture Development Process



Emphasis on separation of

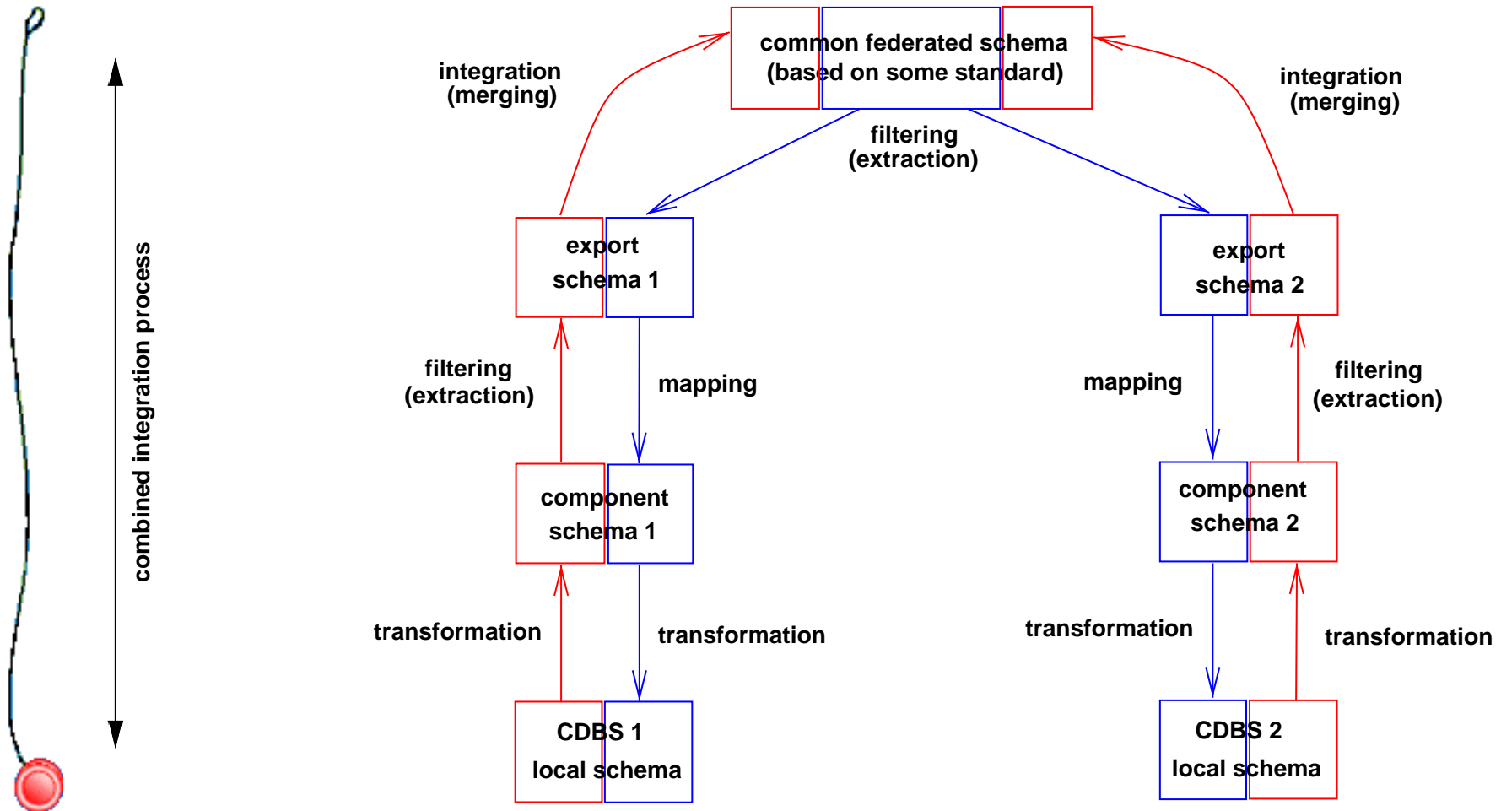
- Domain Engineering and
- Application Engineering.

# Artifacts and Roles

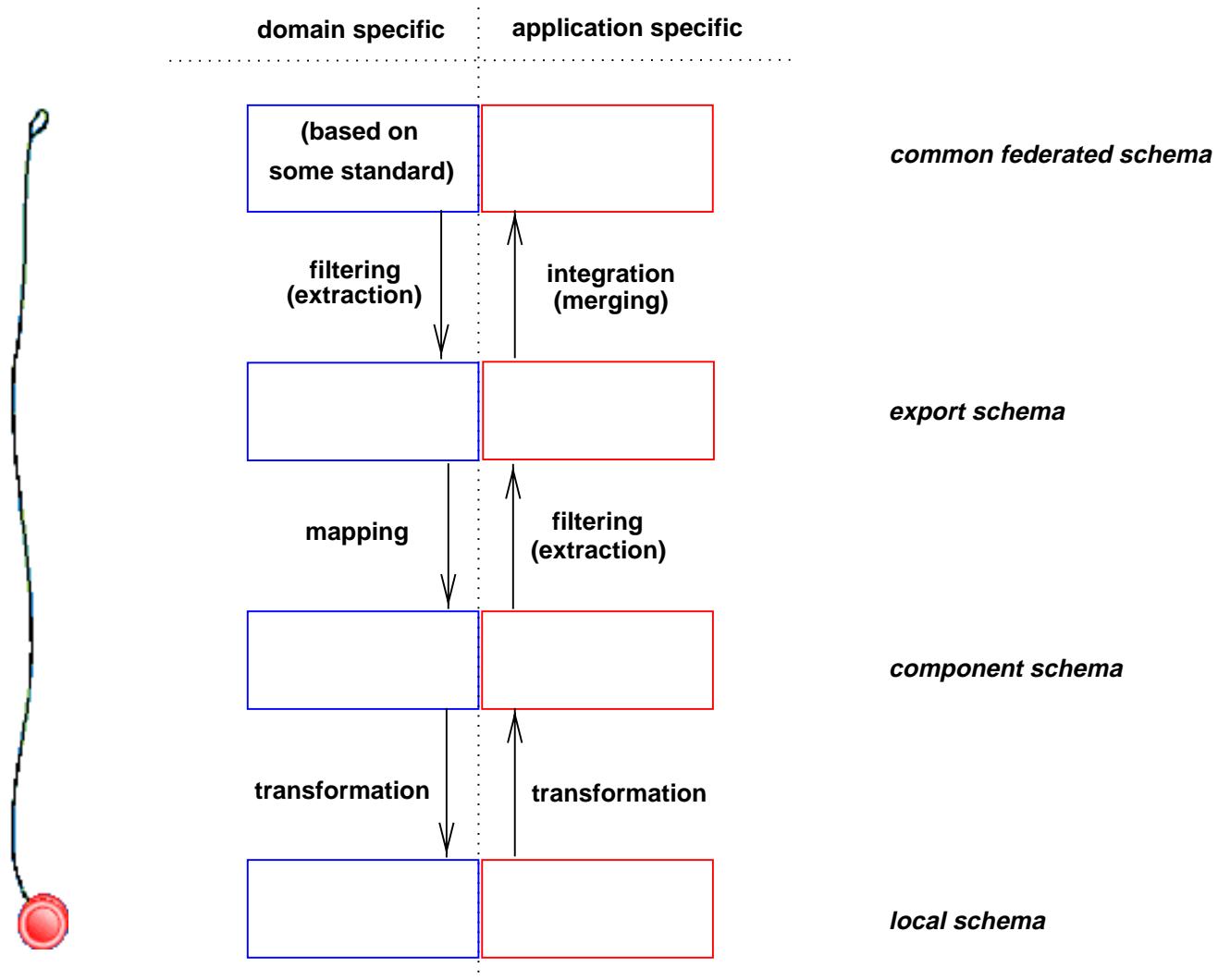


Domain models should be based on domain-specific standards.

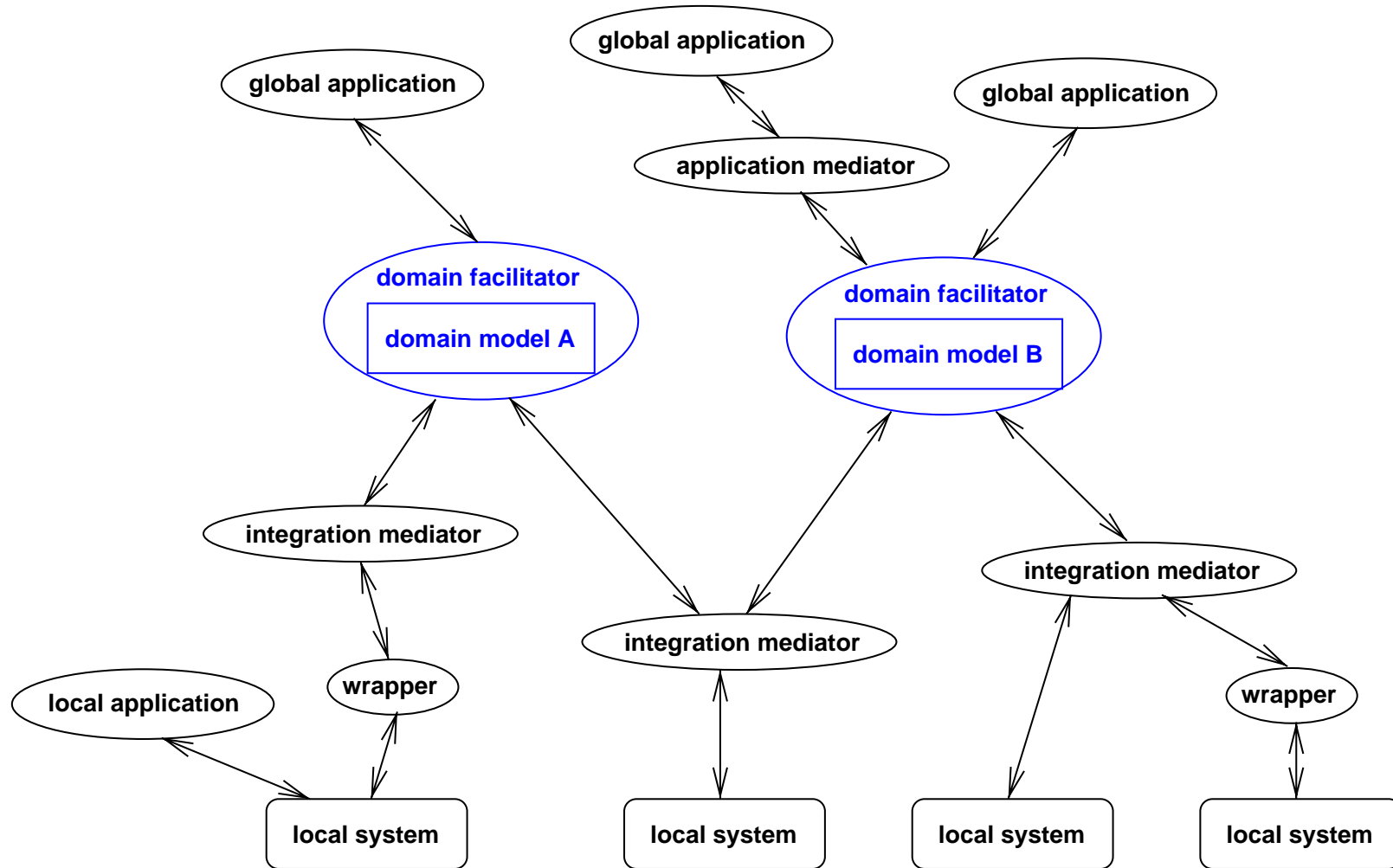
# Combined Yo-Yo Approach



# Domain/Application Engineering and FDBS



# Domain Facilitators & Mediators



# Summary

Jim Kleewein at VLDB '96:

“Schema integration is one aspect of usability that impedes federation. There are often thousands of tables or views involved in a federation making maintenance of a global schema difficult.”

Basing the global schema on standards-based domain models should avoid changes to the fundamental structure of this schema, making integration more usable and scalable.

Approach:

- Shifting the responsibility for the integration from the multidatabase level towards the local level.
- The integration mediators have to do more, the domain facilitators do less.

Any comments?