

**Supporting Table 1**

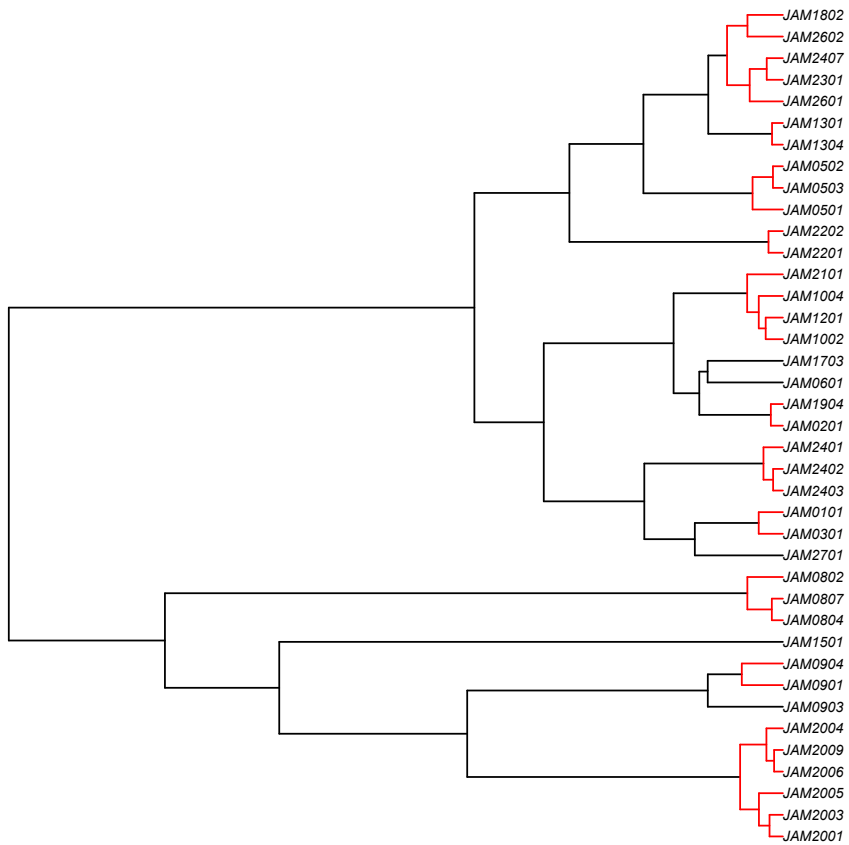
locality	chirality	latitude	longitude	bio12	bio13	bio14	bio15	bio16	bio17	bio18	bio19	elevation
Monti Alburni Passo della Sentinella	S	40.420067	15.418623	711	96	23	36	259	88	111	228	1085
Monte Cucco	S	43.330441	12.880001	947	110	55	17	291	197	197	225	519
Monte Genzana	D	41.944444	13.9075	821	102	50	21	267	170	180	187	1757
Monte Genzana	S	41.945833	13.905556	821	102	50	21	267	170	180	187	1757
Monte Petrella	S	41.314563	13.622863	806	114	31	34	301	116	116	237	854
Campo di Mele (LT) Monte Faggeto (Aurunci)	S	41.375207	13.548188	842	119	30	35	317	118	148	252	702
San Pietro Infine (CE)	S	41.446819	13.995206	900	128	29	38	343	115	115	286	294
Monte Cairo	S	41.546634	13.770514	794	106	38	27	280	136	154	214	1010
Monte Semprevisa	S	41.562329	13.12387	799	110	32	31	290	128	152	215	1037
Monte Autore	S	41.954722	13.203333	798	103	45	26	274	153	179	167	1488
Monte Gennaro	S	42.04042	12.880099	815	105	39	26	280	151	169	199	449
Terminillo Sella di Leonessa	S	42.470506	13.007211	813	104	39	32	288	124	204	132	1658
Monte Torre	S	42.661389	12.588056	834	102	45	22	274	172	172	191	795
Monte Morrone	S	42.115946	13.979833	840	103	53	20	269	171	184	187	1648
Ovindoli (AQ) Monte Magnola	S	42.142444	13.49602	824	103	48	23	275	165	175	180	1751
Lago Matese	S	41.4225	14.406944	711	95	35	27	247	117	117	204	1459
Campitello Matese	S	41.460505	14.384062	735	94	39	24	249	131	131	201	966
Prati di Mezzo	D	41.659167	13.928889	786	102	42	24	267	148	148	199	1580
Settefrati	S	41.679167	13.860556	817	108	38	27	289	137	137	225	1120
Prato	S	43.884722	11.130278	910	116	40	24	301	157	157	238	372
Monte Altissimo A.Apuane	S	44.052591	10.244776	885	108	43	24	298	162	162	215	994
Campolo (BO) su Montovolo	S	44.216344	11.093361	958	120	47	23	317	175	175	239	915
Monteveglia parco Abbazia	S	44.467972	11.092911	813	97	45	21	257	163	163	185	218
Tabina m.te Radicchio	S	44.307067	11.127897	862	106	44	22	278	163	163	208	288
Alta valle torrente Sillaro loc. Sassoleone	S	44.26181	11.464794	844	104	47	21	272	164	164	202	327
Opi (AQ) Monte Amaro	D	41.766353	13.878257	796	102	44	23	268	155	166	195	1315
Pescasseroli (AQ) Monte Marsicano	D	41.826695	13.835863	818	103	48	22	268	170	177	189	1867
Pescasseroli (AQ) Monte Marsicano	S	41.826695	13.835863	818	103	48	22	268	170	177	189	1867
Aremogna	D	41.829722	14.009444	826	102	50	20	267	174	179	192	1885
Monte Greco	D	41.830225	13.990019	815	102	49	21	266	169	169	192	1969
Pescasseroli (AQ) M. di Valle Caprara	D	41.839256	13.754536	822	103	49	22	267	170	180	185	1427
Pescasseroli (AQ) M. di Valle Caprara	S	41.839256	13.754536	822	103	49	22	267	170	180	185	1427
Pescasseroli (AQ) M. Schiena di Cavallo	D	41.839353	13.735449	809	103	47	23	268	167	175	186	1618
Gioia Vecchia (AQ) Passo del Diavolo	S	41.876797	13.746264	809	103	45	23	273	159	159	196	1431
Rocca Pia	S	41.919722	13.978611	801	101	45	22	269	155	155	202	1273
Scanno (AQ) M.Genzana	D	41.920875	13.934336	825	102	50	21	267	173	175	189	1435

**Supporting Table 2**

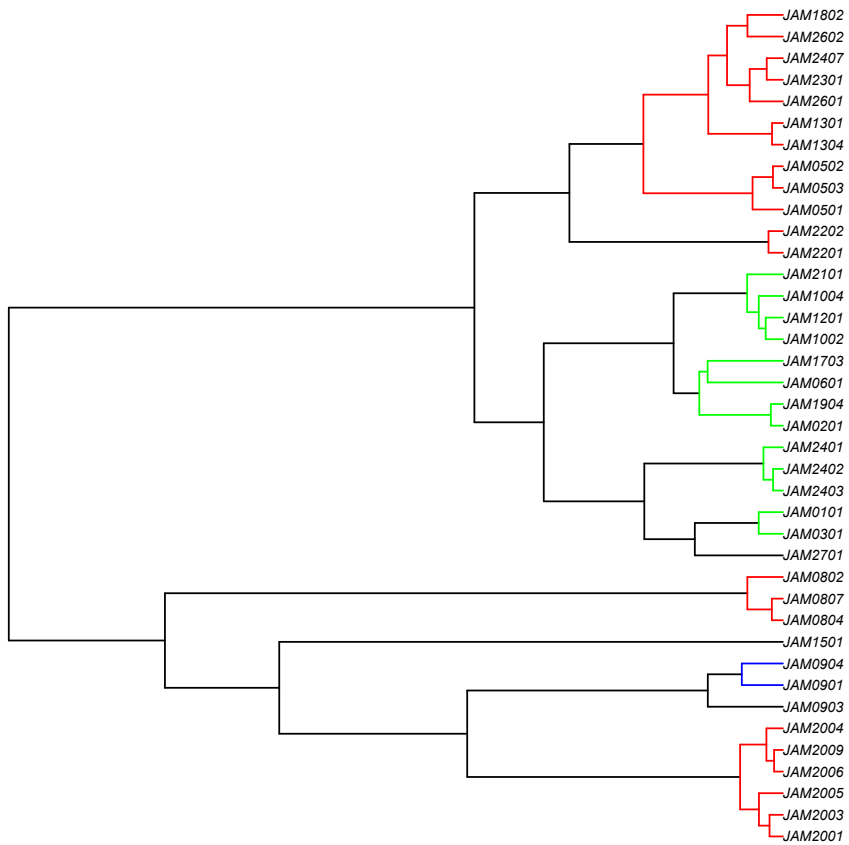
	<b>df</b>	<b>AIC</b>
<b>Full model</b>	3	33.72
<b>Elevation</b>	2	31.74
<b>Rainfall</b>	2	44.16
<b>Null model</b>	1	42.49

Supporting Table 3

	Estimate	z value	Pr(> z )
(Intercept)	-6.895 ± .594	-2.66	0.008
Elevation	0.0041 ± 0.006	2.50	0.012



**Supporting Figure 1.**



**Supporting Figure 2.**