

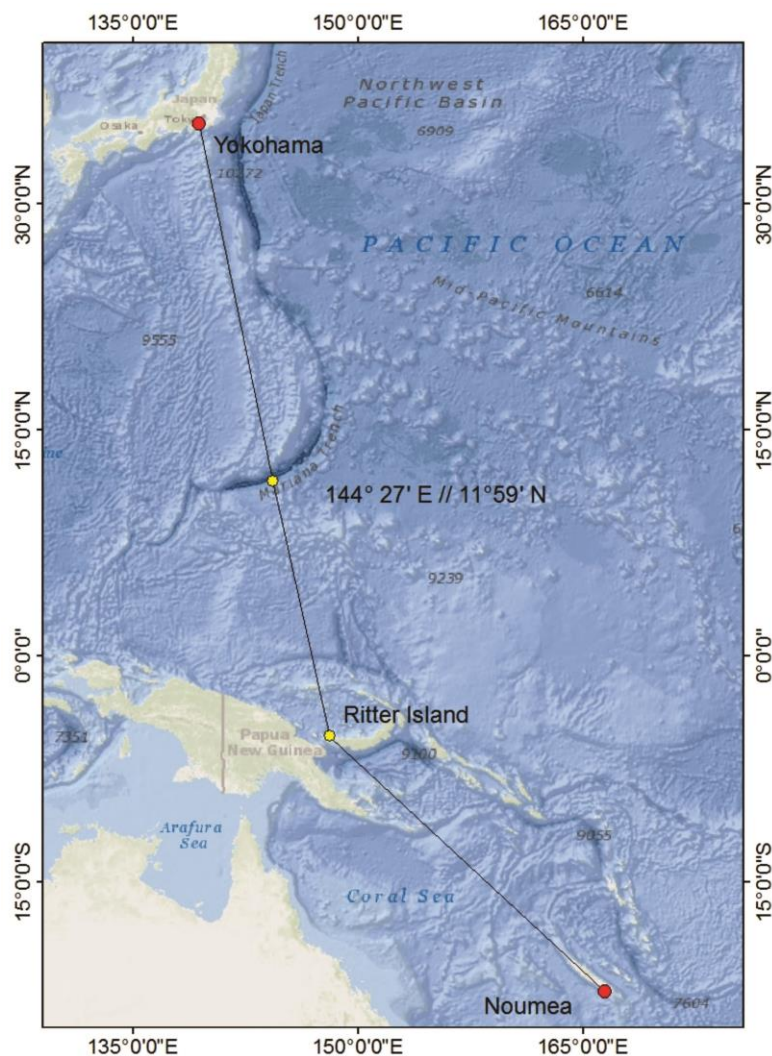
Prof. Dr. Christian Berndt
GEOMAR Helmholtz Centre for Ocean Research Kiel
Wischhofstr. 1-3
24148 Kiel

Tel.: +49 (431) 600 2273
Fax: +49 (431) 600 2292
email: cberndt@geomar.de

Short Cruise Report SONNE SO252

Yokohama - Nouméa
05.11.2016 – 18.12.2016

Chief Scientist: Prof. Dr. Christian Berndt
Captain: Oliver Meyer



Objectives

The overarching aim of this project is to improve our understanding of the general processes and interrelationships that control the submarine continuation and emplacement of landslides caused by volcanic flank collapses. Moreover, the combination of precise knowledge of slide processes (as interpreted from geophysical and geological data collected during the research cruise) and eyewitness reports of the tsunami that was caused by the slide provide the unique opportunity to determine the landslide velocity for the first time.

Objective 1: How was volcanic material from the 1888 flank collapse distributed around Ritter Island?

Good swath bathymetry and side scan sonar coverage of the 1888 landslide deposit off Ritter Island was already achieved in 2004 and then published by US American colleagues at the University of California Santa Cruz (Silver et al. 2009). In addition to the interpretation of the spatial extent and identification of different facies of the deposit these data are re-analyzed. The combination of already existing bathymetry and side scan sonar data with new 3D and 2D seismic data, gravity cores and HyBIS sampling acquired during the course of SO252 will help to constrain the following key questions: What is the total volume of material involved in the landslide? Was the landslide emplaced in a single or in multiple stages? How did the landslide disintegrate? What mechanisms could have caused seafloor failure?

Evidence for multistage emplacement is i.e. several depositional lobes that can be identified in side scan sonar data or the presence of mud intervals between subunits of coarser material. Gravity cores and 3D seismic data are used to determine internal reflectors within the landslide. In addition, the deposits of long-run-out turbidity currents as recovered in distal gravity cores can also be used to determine whether the landslide was emplaced in one or multiple stages.

Objective 2: Landslide velocity

Numerical modelling of the 1888 tsunami source will integrate the constraints on landslide evolution that were derived in WP 1. By reconstructing slide dynamics, a kinematic landslide model is developed that is based on the original shape of Ritter Island, the final distribution of landslide material as well as any existing additional constraints on slide evolution. The time-dependent, three-dimensional slide distribution (will be) are used as boundary condition for the numerical tsunami propagation model. Tsunami simulation (will be) are conducted using the established nonlinear shallow-water model TUNAMI-N2 (Imamura et al. 1997) that has been previously modified to account for landslide-tsunami generation (Brune et al. 2009, 2010). In addition to the kinematic model of landslide motion, the tsunami propagation model requires high-resolution bathymetry data (will be) collected during the survey and embedded in a regional data set with 30 arc seconds resolution (GEBCO). The aim is to compute tsunamis of multiple plausible slide scenarios and to

compare the results to documented run-up heights.

Narrative

RV Sonne left Yokohama in the morning of 5/11/2017. We reached the Challenger Deep in the evening of the 10/11/2017 and started to deploy the CTD after ascertaining that the identified position was indeed the deepest part of the trench by using the EM122 multi-beam system. To protect the depth sensor of the CTD we did a dual cast, first down to 8000 m and then after switching off the depth sensor continued down all the way to the bottom at 10905 m water depth, which was derived based on EM122 depth soundings subsequently calibrated with the CTD sound velocity profile. The mooring deployment took place the whole afternoon the next day (Fig. 1) with the final anchor weight dropped at 09:39 UTC at 11° 20,093' N 142° 11,335' E. and then steamed to the main survey area off Ritter Island.

We arrived north of Ritter Island in the morning of 15/11/2016 and conducted a CTD in order to calibrate the multi-beam and Parasound systems and ran a releaser test for the OBS releaser afterwards. At noon, we began with the deployment of the 2D seismic system. 2D seismic shooting continued until the evening of 18/11/2016 in predominantly calm weather facilitating the recording of high-quality seismic data.. We managed to cover the entire slide deposit without any problems, which were about 680 line km in total (Fig. 2). The 2D system was retrieved at 18:00 local time and we mounted the gravity corer. Most cores only retrieved some volcanic sand in the core catcher confirming the seismic interpretation that Ritter Island mostly consists of sedimentary strata such as scoria deposits.

In the morning of 19/11/2016 we started to deploy the OBS east of Ritter Island (4 OBS) and during the afternoon a further 7 on the slide deposit west of Ritter Island (Fig. 3). Afterwards we sailed to the distal end of the deposit to continue coring. During the night we attempted gravity coring at five sites, but they were largely unsuccessful with minor sediment recovery in the core catchers showing clayey and silty sediments. We deployed the P-Cable system east of Ritter Island the next morning. The system was fully functioning by 11:00 and we started to acquire 3D seismic data across the landslide. Shooting continued until Saturday 26/11/2016 without major interruptions. In the afternoon (25/11/2016 between 04:05 and 04:12) we observed an area of discoloured surface waters at 5°31'7''S 148°04'4'' E that were possibly related to volcanic activity. Through the binocular it looked as if water was upwelling and turbulent. The phenomenon continued for about 15 minutes. We tried to find evidence for this using the water column imaging data from the EM710 multi-beam echosounder, but there were no indications for rising gas bubbles.

On 26/11/2016 we started to recover the P-Cable system. After the system was back on

deck, we steamed to the first OBS site and began with the recovery of the OBS. During the afternoon the wind freshened up to Bft 8 with 2 m waves. Except for OBS2 all OBS surfaced and were recovered until 18:00 and we conducted heat flow measurements during the night along a transect between Sakar and New Britain islands and up the flank of Ritter Island. Unfortunately, we were not able to penetrate the seafloor at any of the ten attempted sites indicating a very hard seabed and explaining why gravity coring was not successful either.

The next morning we began to locate OBS2 by ranging it from four different locations around the deployment point. It was possible to determine its location in the range of +/- 50 m. At 11:00 we deployed the HyBis and ran a search pattern around the determined location. We found the OBS which had its swim line wrapped around the anchor and recovered it using the grab. Both the OBS and the HyBis were back on deck at 14:00. During the afternoon we collected multi-beam data as close as possible around Ritter Island. Afterwards we conducted two drone flights (that were finished by 17:00 and) which provided a complete video coverage of the western flank of Ritter Island. In the evening we re-deployed the P-Cable system and collected 3D seismic data for the next two days. Tuesday afternoon we finished the first run through the 3D cube and continued with infill lines (Fig. 4). During the night of 30/11/2016 a thunderstorm developed. With Bft 9 the wind was quite strong and the vessel had to increase the speed in order to steer. This caused damage to the data cable and we had to recover the system when the wind had abated to Bft 5 between 03:00 and 05:30. We continued with multibeam and parasound lines north of Ritter Island while the system was being repaired. At 08:30 we deployed the video system OFOS and conducted three dives. The first dive addressed the nature of the cone structures west of Ritter (Island???). The second one focussed on the head scarp and the new crater, and the third one on the trim line of the Ritter Slide on the slope of Umboi Island. At 23:00 we started to collect more heat flow data along two transects in the proximal area of the slide. In the morning we re-deployed the P-Cable system (in torching heat). Unfortunately, the drone was lost due to a collision with the ship's A-frame.. Monday afternoon we started to recover the P-Cable system and continued with multi-beam and Parasound profiles during the night to map the distal part of the landslide deposit in order to quantify better its volume.

On 06/12/2016 we performed three HyBis dives. During the first dive, we took two samples from the newly developing cone. The second dive went to the deepest part of the landslide scarp, and the last one aimed to take a sample from the main debris flow plain south of Sakar Island. During the night the operations were continued with more Parasound and multi-beam profiling. The next day we ran a long OFOS transect across the block west of the slide scar. During the night we collected more Parasound and multi-beam bathymetry data in the distal part of the slide. In the

morning we deployed HyBis again and conducted two dives with the OFOS frame mounted beneath the HyBis. The first transect ran from the hummocky facies into an erosional channel in the southern part of the failure area north of Umboi. The second dive started at the top of the highest cone structure and continued down into the main channel with very similar observations compared to the first dive. During the night we sailed to the very distal area of the landslide collecting more multibeam and Parasound data. During the next two days we conducted 8 HyBis dives in total beginning at the very distal section of the survey area and progressing towards Ritter Island. During the night we continued filling gaps in the EM710 multi-beam coverage mainly between Sakar and Umboi Island (Fig. 5).

In the morning of 11/12/2016 we conducted two long HyFos (HyBis with the OFOS video sled) video transects. The first one started at the southern end of the crater base all the way up to the crater rim and down into the crater. During the night we collected more Parasound and EM710 data. We concluded our work in the research area on 12/12/2016 with a TV grab, and subsequently started the transit to Noumea, Newcaledonia, where we arrived at the harbour in the morning of 18/12/2016.

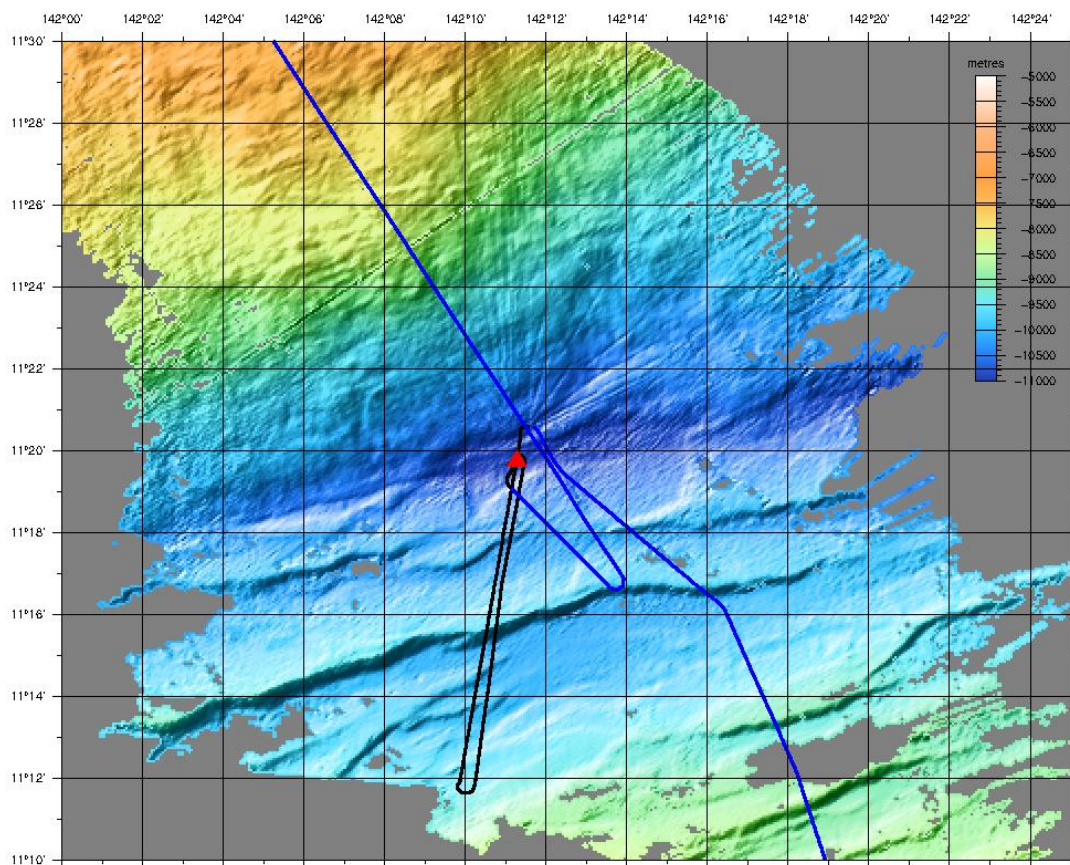


Figure 1: Shaded relief bathymetry of the Marianas Trench. Red star: CTD location. Blue line: High-speed survey ship's track. Black: Low-speed bathymetry survey during mooring lay-out.

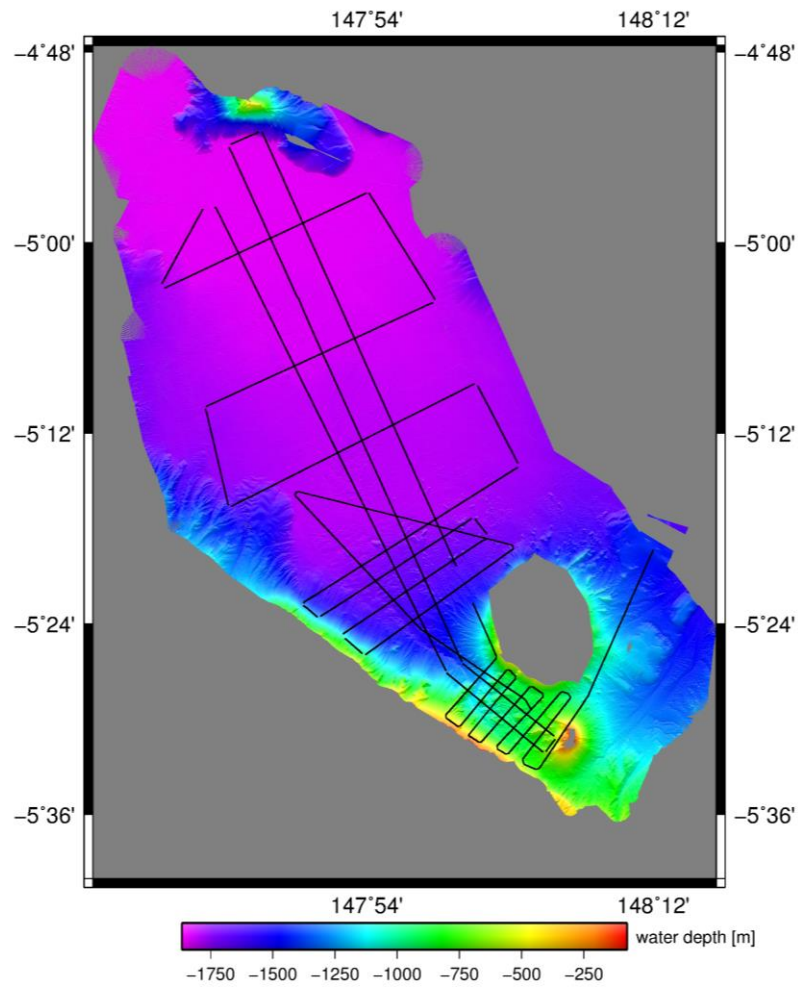


Figure 2: 2D seismic survey lines acquired during the cruise SO252.

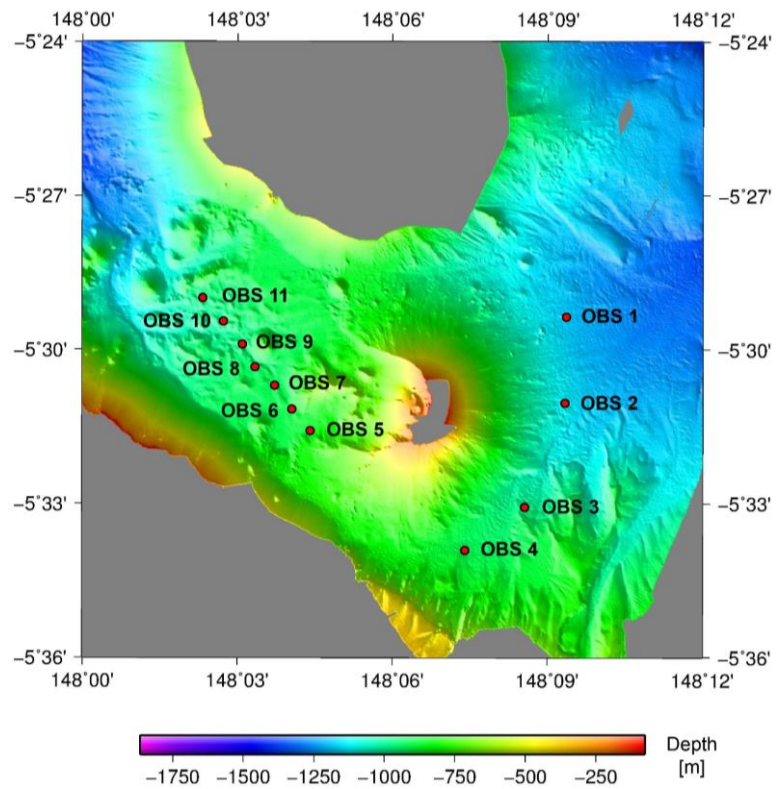


Figure 3: Detailed map of the OBS positions.

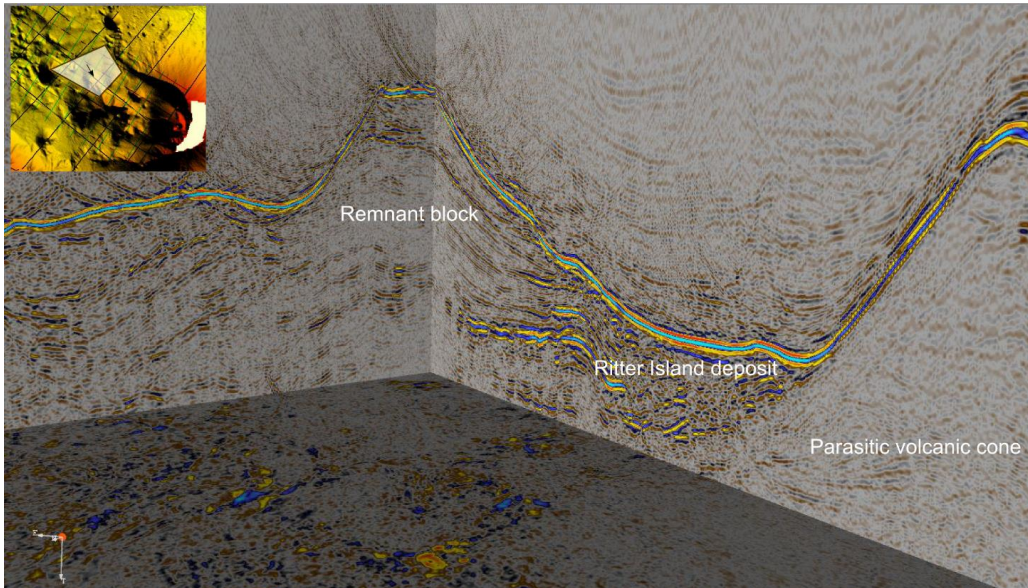


Figure 4: 3D view of the migrated P-Cable data showing the difference in seismic character between the the remnant block in the middle of the landslide scarp and one of the parasitic cone structures. The inset shows the location with the arrow pointing in the viewing direction.

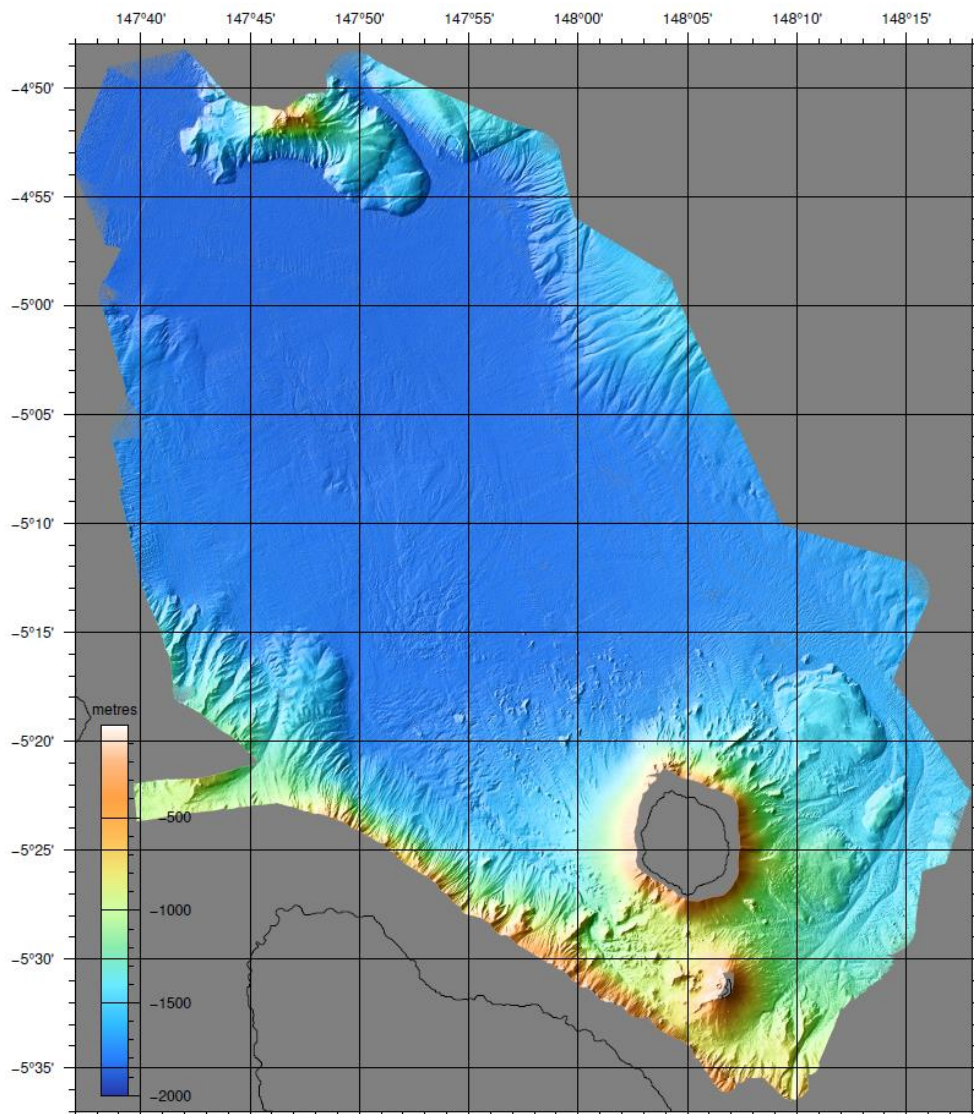


Figure 5: Shaded relief map of the part of the Bismark Sea showing the extent of area mapped during SO252.

Acknowledgements

We thank the Federal Ministry of Education and Science (BMBF)'s SONNE program for funding the expedition. We would also like to thank the master and the ship's crew of R/V Sonne for their relentless support and making our research possible. We would also like to thank Prof. Russel Perembo of the University of Papua New Guinea and Dr. Simon Day of University College London for their help during cruise planning, as well as Dr. Morelia Urlaub (GEOMAR) and Dr. Sascha Bruhne (GFZ-Potsdam) during the preparation of the cruise.



Figure 6: SO252 - Scientific crew

Teilnehmerliste

1.	Prof. Dr. Christian Berndt	Chief scientist	GEOMAR
2.	Dr. Ingo Klaucke	Leader Hydroacoustics	GEOMAR
3.	Christoph Böttner	Hydroacoustics	GEOMAR
4.	Dr. Judith Elger	Data management	GEOMAR
5.	Dr. Swantje Bennecke	Marine biology	GEOMAR
6.	Dr. Sudipta Sarkar	Geophysics, Watch leader	GEOMAR
7.	Prof. Wu-Cheng Chi	Heat flow, OBS	SINICA
8.	Dr. Aaron Micallef	Seismic	UOM
9.	Sina Muff	Leader P-Cable	GEOMAR
10.	Dr. Sebastian Watt	Volcanology, sedimentology	UBirmingham
11.	Melanie Ray	Volcanology, sedimentology	UCL
12.	Dr. Johannes van Haren	Physical Oceanography	NIOZ
13.	Bettina Schramm	Leader OBS	GEOMAR
14.	Ann-Marie Völsch	OBS, Admin	GEOMAR
15.	Michel Kühn	OBS, Watch keeper	GEOMAR
16.	Nils Peter Finger	OBS, Watch keeper	GEOMAR
17.	Gero Wetzell	Electronical engineer	GEOMAR
18.	Eduard Fabrizius	Electronical engineer	GEOMAR
19.	Torge Matthiessen	Mechanical engineer	GEOMAR
20.	Jan Rindfleisch	Mechanical engineer	GEOMAR
21.	Theresa Roth	Watch leader	GEOMAR
22.	Kristina Popp	Watch leader	GEOMAR
23.	Joel Edwards	Watch keeper	UC Santa Cruz
24.	Kuan-Ting Lin	Watch keeper, Heat flow	GEOMAR
25.	Olga Sanchez	Watch keeper	IEO
26.	Thore Kausch	Watch keeper,	GEOMAR
27.	Inken Schulze	Watch keeper	GEOMAR
28.	Thomas Mommsen	Watch keeper	GEOMAR
29.	Hendrik Rapp	Watch keeper	GEOMAR
30.	Anja Bräunig	Watch keeper	GEOMAR

GEOMAR Helmholtz-Zentrum für
Ozeanforschung Kiel
Kiel
Germany

University of Birmingham (**UBirmingham**)
Birmingham
U.K.

NIOZ - Royal Netherlandic Institute for Sea
Research
Texel
The Netherlands

UCL - University College London
London
U.K.

University of Malta
La Valleta
Malta

Academia Sinica (**SINICA**)
Taipei
Taiwan

IEO - Spanish Institute of Oceanography
Malaga
Spain

UC Santa Cruz – University California Santa
Cruz
Santa Cruz
U.S.A.

Geoforschungszentrum Potsdam (**GFZ**)
Potsdam
Germany

Stationsliste

<u>Abkürzungen / Abbreviation</u>		<u>Eingesetzte Geräte / Equipment used</u>	<u>Einsätze / tasks</u>
z.W	zu Wasser / into water		
a.D.	an Deck / on deck	CTD	3
Slmax	(maximale) Seillänge / max. rope-length	Verankerung	1
LT	Lottiefe nach EM 122 / Depth of EM 122	Drohne	4
W ...	eingesetzte Winde / Winch used	2D-Seismik	3
nm	Seemeilen / nautical miles	3D-Seismik	3
EM/PS	SIMRAD Multibeam / Parasound	Heat Flow	23
rwk / COG:	Rechtweisender Kurs / true course	Schwerelot	10
d:	Distanz / distance	Hybis	17
v:	Geschwindigkeit in Knoten / SOG in knots	OBS auslegen	1 11 Stück
SL:	Seillänge / rope-length	OBS einholen	1 11 Stück
SZ:	Seilzug / rope tension	Parasound-Profil	1
		OFOS	7
		EM 122-Profil	10
		TV-Greifer	1
			Σ 85
		<u>Geräteverluste / lost Equipment:</u>	1 Drohne

Station	Date / Time UTC	Device	Device Abbreviation	Action	Latitude	Longitude	Depth (m)
SO252_2-1	10/11/2016 22:00:00	Autonomous Underwater Vehicle	AUV	station start	11° 19,751' N	142° 11,278' E	10885
SO252_2-1	10/11/2016 22:01:12	Autonomous Underwater Vehicle	AUV	profile start	11° 19,750' N	142° 11,278' E	10884.1
SO252_2-1	10/11/2016 22:11:31	Autonomous Underwater Vehicle	AUV	on deck	11° 19,754' N	142° 11,276' E	10882.1
SO252_2-1	10/11/2016 22:12:47	Autonomous Underwater Vehicle	AUV	station end	11° 19,754' N	142° 11,275' E	10882.7
SO252_1-1	10/11/2016 11:46:12	CTD	CTD	station start	11° 19,738' N	142° 11,244' E	10884.9
SO252_1-1	10/11/2016 11:48:48	CTD	CTD	in the water	11° 19,744' N	142° 11,257' E	10880.8
SO252_1-1	10/11/2016 15:12:19	CTD	CTD	max depth/on ground	11° 19,755' N	142° 11,278' E	10884.5
SO252_1-1	10/11/2016 15:18:59	CTD	CTD	hoisting	11° 19,756' N	142° 11,278' E	10891.7
SO252_1-1	10/11/2016 17:42:52	CTD	CTD	on deck	11° 19,755' N	142° 11,279' E	10885.8
SO252_1-1	10/11/2016 17:44:00	CTD	CTD	station end	11° 19,753' N	142° 11,278' E	10884.3
SO252_1-2	10/11/2016 18:02:35	CTD	CTD	station start	11° 19,757' N	142° 11,278' E	10884.9
SO252_1-2	10/11/2016 18:04:21	CTD	CTD	in the water	11° 19,757' N	142° 11,279' E	10887.6
SO252_1-2	10/11/2016 22:45:34	CTD	CTD	max depth/on ground	11° 19,754' N	142° 11,276' E	10885
SO252_1-2	10/11/2016 22:46:56	CTD	CTD	hoisting	11° 19,756' N	142° 11,276' E	10887.3
SO252_1-2	11/11/2016 02:13:22	CTD	CTD	on deck	11° 19,754' N	142° 11,274' E	10902.7
SO252_1-2	11/11/2016 02:14:40	CTD	CTD	station end	11° 19,753' N	142° 11,274' E	10907.3
SO252_3-1	11/11/2016 03:23:03	Mooring	MOOR	station start	11° 11,842' N	142° 9,829' E	9509.6
SO252_3-1	11/11/2016 03:24:47	Mooring	MOOR	in the water	11° 11,867' N	142° 9,845' E	9512.2
SO252_3-1	11/11/2016 03:29:11	Mooring	MOOR	information	11° 11,941' N	142° 9,867' E	9540.9
SO252_3-1	11/11/2016 05:03:12	Mooring	MOOR	information	11° 13,583' N	142° 10,163' E	9914.6
SO252_3-1	11/11/2016 05:17:36	Mooring	MOOR	information	11° 13,821' N	142° 10,205' E	9882
SO252_3-1	11/11/2016 05:28:37	Mooring	MOOR	information	11° 14,001' N	142° 10,238' E	9937.3
SO252_3-1	11/11/2016 05:39:13	Mooring	MOOR	information	11° 14,176' N	142° 10,269' E	10004.2

Station	Date / Time UTC	Device	Device Abbreviation	Action	Latitude	Longitude	Depth (m)
SO252_3-1	11/11/2016 05:39:56	Mooring	MOOR	information	11° 14,187' N	142° 10,270' E	10004.1
SO252_3-1	11/11/2016 07:23:25	Mooring	MOOR	information	11° 16,713' N	142° 10,728' E	10061.8
SO252_3-1	11/11/2016 07:41:36	Mooring	MOOR	information	11° 17,073' N	142° 10,792' E	10142.4
SO252_3-1	11/11/2016 08:39:18	Mooring	MOOR	information	11° 18,509' N	142° 11,052' E	10335.2
SO252_3-1	11/11/2016 09:39:00	Mooring	MOOR	in the water	11° 20,093' N	142° 11,335' E	10861
SO252_3-1	11/11/2016 09:41:27	Mooring	MOOR	station end	11° 20,213' N	142° 11,354' E	10851.7
SO252_4-1	14/11/2016 21:25:01	CTD	CTD	station start	5° 15,271' S	148° 13,821' E	1651.7
SO252_4-1	14/11/2016 21:26:29	CTD	CTD	in the water	5° 15,274' S	148° 13,823' E	1652.3
SO252_4-1	14/11/2016 22:15:05	CTD	CTD	max depth/on ground	5° 15,275' S	148° 13,819' E	1652.5
SO252_4-1	14/11/2016 22:16:19	CTD	CTD	hoisting	5° 15,277' S	148° 13,820' E	1654.4
SO252_4-1	14/11/2016 22:50:04	CTD	CTD	on deck	5° 15,269' S	148° 13,819' E	1653.4
SO252_4-1	14/11/2016 23:00:25	CTD	CTD	station end	5° 15,269' S	148° 13,823' E	1652.8
SO252_5-1	15/11/2016 02:00:00	Seismic Source	SEISSRC	station start	5° 15,277' S	148° 13,824' E	0
SO252_5-1	15/11/2016 02:03:07	Seismic Source	SEISSRC	information	5° 15,317' S	148° 13,796' E	0
SO252_5-1	15/11/2016 02:16:36	Seismic Source	SEISSRC	information	5° 15,643' S	148° 13,644' E	0
SO252_5-1	15/11/2016 02:24:57	Seismic Source	SEISSRC	information	5° 15,896' S	148° 13,533' E	0
SO252_5-1	15/11/2016 02:28:21	Seismic Source	SEISSRC	information	5° 16,000' S	148° 13,485' E	1652.2
SO252_5-1	15/11/2016 02:47:45	Seismic Source	SEISSRC	information	5° 16,592' S	148° 13,220' E	1651.3
SO252_5-1	15/11/2016 02:54:33	Seismic Source	SEISSRC	Airgun in water	5° 16,802' S	148° 13,126' E	1649.4
SO252_5-1	15/11/2016 02:59:07	Seismic Source	SEISSRC	profile start	5° 16,959' S	148° 13,064' E	1647.7
SO252_5-1	15/11/2016 03:07:18	Seismic Source	SEISSRC	information	5° 17,366' S	148° 12,936' E	1652.6
SO252_5-1	15/11/2016 03:07:38	Seismic Source	SEISSRC	information	5° 17,380' S	148° 12,931' E	1652.6
SO252_5-1	15/11/2016 03:13:48	Seismic Source	SEISSRC	information	5° 17,635' S	148° 12,837' E	1585.3

Station	Date / Time UTC	Device	Device Abbreviation	Action	Latitude	Longitude	Depth (m)
SO252_5-1	15/11/2016 03:30:02	Seismic Source	SEISSRC	information	5° 18,178' S	148° 12,522' E	1454.4
SO252_5-1	15/11/2016 03:34:34	Seismic Source	SEISSRC	information	5° 18,292' S	148° 12,462' E	1453.5
SO252_5-1	15/11/2016 03:37:03	Seismic Source	SEISSRC	information	5° 18,381' S	148° 12,423' E	1449.5
SO252_5-1	15/11/2016 03:42:30	Seismic Source	SEISSRC	information	5° 18,640' S	148° 12,305' E	1437
SO252_5-1	15/11/2016 03:45:30	Seismic Source	SEISSRC	information	5° 18,809' S	148° 12,220' E	1433.3
SO252_5-1	15/11/2016 03:53:57	Seismic Source	SEISSRC	profile start	5° 19,403' S	148° 11,966' E	1409.7
SO252_5-1	15/11/2016 06:07:12	Seismic Source	SEISSRC	alter course	5° 28,555' S	148° 7,879' E	1074.5
SO252_5-1	15/11/2016 07:20:06	Seismic Source	SEISSRC	alter course	5° 33,049' S	148° 4,847' E	768.2
SO252_5-1	15/11/2016 07:35:03	Seismic Source	SEISSRC	alter course	5° 32,784' S	148° 3,856' E	668.5
SO252_5-1	15/11/2016 08:41:39	Seismic Source	SEISSRC	alter course	5° 28,772' S	148° 6,718' E	947.5
SO252_5-1	15/11/2016 08:52:19	Seismic Source	SEISSRC	alter course	5° 28,289' S	148° 6,375' E	904.2
SO252_5-1	15/11/2016 10:00:02	Seismic Source	SEISSRC	alter course	5° 32,054' S	148° 2,974' E	684.6
SO252_5-1	15/11/2016 10:11:34	Seismic Source	SEISSRC	alter course	5° 31,894' S	148° 2,250' E	506.6
SO252_5-1	15/11/2016 11:09:52	Seismic Source	SEISSRC	alter course	5° 28,637' S	148° 5,026' E	849
SO252_5-1	15/11/2016 11:22:45	Seismic Source	SEISSRC	alter course	5° 27,987' S	148° 4,484' E	764.3
SO252_5-1	15/11/2016 12:27:21	Seismic Source	SEISSRC	alter course	5° 31,404' S	148° 1,192' E	410.9
SO252_5-1	15/11/2016 12:39:11	Seismic Source	SEISSRC	alter course	5° 31,057' S	148° 0,457' E	308.7
SO252_5-1	15/11/2016 13:12:38	Seismic Source	SEISSRC	information	5° 29,140' S	148° 1,857' E	1026.5
SO252_5-1	15/11/2016 13:34:20	Seismic Source	SEISSRC	information	5° 27,912' S	148° 2,936' E	954.7
SO252_5-1	15/11/2016 13:41:38	Seismic Source	SEISSRC	alter course	5° 27,504' S	148° 3,293' E	896.1
SO252_5-1	15/11/2016 13:51:50	Seismic Source	SEISSRC	alter course	5° 26,917' S	148° 2,976' E	738.3
SO252_5-1	15/11/2016 14:55:01	Seismic Source	SEISSRC	alter course	5° 30,402' S	147° 59,878' E	370.3
SO252_5-1	15/11/2016 15:09:43	Seismic Source	SEISSRC	alter course	5° 29,905' S	147° 58,997' E	439.9

Station	Date / Time UTC	Device	Device Abbreviation	Action	Latitude	Longitude	Depth (m)
SO252_5-1	15/11/2016 16:16:06	Seismic Source	SEISSRC	alter course	5° 26,171' S	148° 2,128' E	797.5
SO252_5-1	15/11/2016 17:06:59	Seismic Source	SEISSRC	information	5° 22,655' S	148° 0,651' E	1442.9
SO252_5-1	15/11/2016 17:27:01	Seismic Source	SEISSRC	information	5° 21,285' S	148° 0,039' E	1580.2
SO252_5-1	15/11/2016 17:31:00	Seismic Source	SEISSRC	information	5° 21,010' S	147° 59,917' E	1605.3
SO252_5-1	16/11/2016 00:17:03	Seismic Source	SEISSRC	alter course	4° 53,117' S	147° 47,449' E	1661.1
SO252_5-1	16/11/2016 00:45:01	Seismic Source	SEISSRC	alter course	4° 53,788' S	147° 45,492' E	1839.2
SO252_5-1	16/11/2016 08:44:31	Seismic Source	SEISSRC	alter course	5° 26,523' S	148° 0,050' E	1346
SO252_5-1	16/11/2016 10:20:47	Seismic Source	SEISSRC	alter course	5° 31,065' S	148° 5,764' E	656.2
SO252_5-1	16/11/2016 10:36:02	Seismic Source	SEISSRC	alter course	5° 31,983' S	148° 5,272' E	643.6
SO252_5-1	16/11/2016 12:21:53	Seismic Source	SEISSRC	alter course	5° 27,135' S	147° 59,082' E	1252.6
SO252_5-1	16/11/2016 19:36:49	Seismic Source	SEISSRC	alter course	4° 57,886' S	147° 44,552' E	1840.3
SO252_5-1	16/11/2016 21:00:27	Seismic Source	SEISSRC	alter course	5° 2,591' S	147° 41,115' E	1783.2
SO252_5-1	17/11/2016 00:11:10	Seismic Source	SEISSRC	alter course	4° 56,924' S	147° 53,902' E	1833.7
SO252_5-1	17/11/2016 01:57:07	Seismic Source	SEISSRC	alter course	5° 3,444' S	147° 58,194' E	1807.5
SO252_5-1	17/11/2016 05:29:00	Seismic Source	SEISSRC	alter course	5° 10,261' S	147° 44,012' E	1778
SO252_5-1	17/11/2016 06:54:09	Seismic Source	SEISSRC	alter course	5° 16,434' S	147° 45,265' E	1600.4
SO252_5-1	17/11/2016 10:45:49	Seismic Source	SEISSRC	alter course	5° 8,920' S	148° 0,716' E	1791.5
SO252_5-1	17/11/2016 12:02:52	Seismic Source	SEISSRC	alter course	5° 13,916' S	148° 3,496' E	1771.1
SO252_5-1	17/11/2016 15:36:50	Seismic Source	SEISSRC	alter course	5° 22,626' S	147° 50,072' E	1367.7
SO252_5-1	17/11/2016 15:55:04	Seismic Source	SEISSRC	alter course	5° 23,544' S	147° 50,865' E	1212.5
SO252_5-1	17/11/2016 18:28:36	Seismic Source	SEISSRC	alter course	5° 17,383' S	148° 0,578' E	1759.4
SO252_5-1	17/11/2016 18:46:11	Seismic Source	SEISSRC	alter course	5° 18,320' S	148° 1,522' E	1734
SO252_5-1	17/11/2016 21:14:16	Seismic Source	SEISSRC	alter course	5° 24,559' S	147° 52,594' E	1185.7

Station	Date / Time UTC	Device	Device Abbreviation	Action	Latitude	Longitude	Depth (m)
SO252_5-1	17/11/2016 21:40:12	Seismic Source	SEISSRC	alter course	5° 25,911' S	147° 53,776' E	942.4
SO252_5-1	18/11/2016 00:12:40	Seismic Source	SEISSRC	alter course	5° 19,343' S	148° 3,120' E	1641.2
SO252_5-1	18/11/2016 03:20:09	Seismic Source	SEISSRC	alter course	5° 15,684' S	147° 49,749' E	1791
SO252_5-1	18/11/2016 06:00:00	Seismic Source	SEISSRC	alter course	5° 24,305' S	147° 57,362' E	1551.5
SO252_5-1	18/11/2016 07:56:48	Seismic Source	SEISSRC	profile end	5° 29,515' S	148° 4,379' E	896.1
SO252_5-1	18/11/2016 08:04:44	Seismic Source	SEISSRC	on deck	5° 29,911' S	148° 4,591' E	871.5
SO252_5-1	18/11/2016 08:09:35	Seismic Source	SEISSRC	on deck	5° 30,087' S	148° 4,682' E	847.6
SO252_5-1	18/11/2016 08:14:55	Seismic Source	SEISSRC	on deck	5° 30,281' S	148° 4,791' E	813
SO252_5-1	18/11/2016 08:17:11	Seismic Source	SEISSRC	on deck	5° 30,363' S	148° 4,839' E	784.9
SO252_5-1	18/11/2016 08:23:07	Seismic Source	SEISSRC	on deck	5° 30,577' S	148° 4,961' E	672.9
SO252_5-1	18/11/2016 08:24:03	Seismic Source	SEISSRC	station end	5° 30,611' S	148° 4,981' E	632.7
SO252_6-1	18/11/2016 09:23:23	Gravity Corer	GC	station start	5° 29,027' S	148° 12,204' E	1316.9
SO252_6-1	18/11/2016 09:28:56	Gravity Corer	GC	in the water	5° 29,019' S	148° 12,204' E	1317
SO252_6-1	18/11/2016 09:56:13	Gravity Corer	GC	max depth/on ground	5° 29,026' S	148° 12,209' E	1316.5
SO252_6-1	18/11/2016 09:57:05	Gravity Corer	GC	hoisting	5° 29,027' S	148° 12,209' E	1316.8
SO252_6-1	18/11/2016 10:32:29	Gravity Corer	GC	on deck	5° 29,025' S	148° 12,209' E	1318.4
SO252_6-1	18/11/2016 10:46:30	Gravity Corer	GC	station end	5° 29,023' S	148° 12,210' E	1318.4
SO252_6-2	18/11/2016 11:08:31	Gravity Corer	GC	station start	5° 29,264' S	148° 12,796' E	1315.8
SO252_6-2	18/11/2016 11:17:37	Gravity Corer	GC	in the water	5° 29,276' S	148° 12,796' E	1314.9
SO252_6-2	18/11/2016 11:44:44	Gravity Corer	GC	max depth/on ground	5° 29,278' S	148° 12,792' E	1322.8
SO252_6-2	18/11/2016 11:45:20	Gravity Corer	GC	hoisting	5° 29,278' S	148° 12,792' E	1322.2
SO252_6-2	18/11/2016 12:23:37	Gravity Corer	GC	on deck	5° 29,273' S	148° 12,788' E	1323.1
SO252_6-2	18/11/2016 12:28:22	Gravity Corer	GC	station end	5° 29,277' S	148° 12,790' E	1320.5

Station	Date / Time UTC	Device	Device Abbreviation	Action	Latitude	Longitude	Depth (m)
SO252_7-1	18/11/2016 13:45:28	Gravity Corer	GC	station start	5° 32,227' S	148° 9,164' E	1084.4
SO252_7-1	18/11/2016 13:50:15	Gravity Corer	GC	in the water	5° 32,227' S	148° 9,202' E	1077.3
SO252_7-1	18/11/2016 14:13:55	Gravity Corer	GC	max depth/on ground	5° 32,230' S	148° 9,206' E	1075.1
SO252_7-1	18/11/2016 14:14:21	Gravity Corer	GC	hoisting	5° 32,230' S	148° 9,206' E	1074.2
SO252_7-1	18/11/2016 14:44:26	Gravity Corer	GC	on deck	5° 32,231' S	148° 9,204' E	1075.3
SO252_7-1	18/11/2016 14:51:50	Gravity Corer	GC	station end	5° 32,229' S	148° 9,205' E	1077.5
SO252_8-1	18/11/2016 16:00:10	Gravity Corer	GC	station start	5° 31,031' S	148° 5,457' E	706.4
SO252_8-1	18/11/2016 16:04:49	Gravity Corer	GC	in the water	5° 31,068' S	148° 5,445' E	706
SO252_8-1	18/11/2016 16:24:21	Gravity Corer	GC	max depth/on ground	5° 31,074' S	148° 5,446' E	706.3
SO252_8-1	18/11/2016 16:24:27	Gravity Corer	GC	hoisting	5° 31,074' S	148° 5,446' E	706.2
SO252_8-1	18/11/2016 16:45:46	Gravity Corer	GC	on deck	5° 31,071' S	148° 5,449' E	706.2
SO252_8-1	18/11/2016 16:51:15	Gravity Corer	GC	station end	5° 31,074' S	148° 5,447' E	705.8
SO252_9-1	18/11/2016 17:34:52	Gravity Corer	GC	station start	5° 28,407' S	148° 3,872' E	903.6
SO252_9-1	18/11/2016 17:38:52	Gravity Corer	GC	in the water	5° 28,393' S	148° 3,858' E	903.1
SO252_9-1	18/11/2016 17:59:57	Gravity Corer	GC	max depth/on ground	5° 28,394' S	148° 3,858' E	904
SO252_9-1	18/11/2016 18:00:12	Gravity Corer	GC	hoisting	5° 28,394' S	148° 3,858' E	904.4
SO252_9-1	18/11/2016 18:26:37	Gravity Corer	GC	on deck	5° 28,396' S	148° 3,860' E	903.7
SO252_9-1	18/11/2016 18:32:49	Gravity Corer	GC	station end	5° 28,397' S	148° 3,859' E	903.5
SO252_10-1	18/11/2016 19:40:22	Gravity Corer	GC	station start	5° 20,908' S	147° 57,467' E	1686
SO252_10-1	18/11/2016 19:43:38	Gravity Corer	GC	in the water	5° 20,911' S	147° 57,465' E	1688.3
SO252_10-1	18/11/2016 20:55:06	Gravity Corer	GC	on deck	5° 20,907' S	147° 57,470' E	1686.9
SO252_10-1	18/11/2016 21:08:03	Gravity Corer	GC	station end	5° 20,905' S	147° 57,468' E	1686.3
SO252_11-1	18/11/2016 23:07:43	Autonomous Underwater Vehicle	AUV	station start	5° 31,463' S	148° 7,208' E	290

Station	Date / Time UTC	Device	Device Abbreviation	Action	Latitude	Longitude	Depth (m)
SO252_11-1	18/11/2016 23:15:51	Autonomous Underwater Vehicle	AUV	in the water	5° 31,465' S	148° 7,218' E	298.2
SO252_11-1	18/11/2016 23:30:26	Autonomous Underwater Vehicle	AUV	on deck	5° 31,467' S	148° 7,215' E	296.4
SO252_11-1	18/11/2016 23:33:41	Autonomous Underwater Vehicle	AUV	in the water	5° 31,468' S	148° 7,215' E	295.1
SO252_11-1	18/11/2016 23:44:23	Autonomous Underwater Vehicle	AUV	on deck	5° 31,466' S	148° 7,218' E	300.8
SO252_11-1	18/11/2016 23:45:50	Autonomous Underwater Vehicle	AUV	station end	5° 31,465' S	148° 7,219' E	300.4
SO252_12-1	19/11/2016 00:00:47	Seismic Ocean Bottom Receiver	SEISOBR	station start	5° 30,921' S	148° 7,670' E	645
SO252_12-1	19/11/2016 00:25:03	Seismic Ocean Bottom Receiver	SEISOBR	station start	5° 29,294' S	148° 9,000' E	1142.2
SO252_12-1	19/11/2016 00:34:34	Seismic Ocean Bottom Receiver	SEISOBR	OBS deployed	5° 29,364' S	148° 9,026' E	1147.3
SO252_12-2	19/11/2016 00:58:44	Seismic Ocean Bottom Receiver	SEISOBR	OBS deployed	5° 31,045' S	148° 9,342' E	1127.6
SO252_12-3	19/11/2016 01:22:30	Seismic Ocean Bottom Receiver	SEISOBR	OBS deployed	5° 33,073' S	148° 8,567' E	969
SO252_12-4	19/11/2016 01:41:08	Seismic Ocean Bottom Receiver	SEISOBR	OBS deployed	5° 33,916' S	148° 7,408' E	903.3
SO252_12-5	19/11/2016 02:15:55	Seismic Ocean Bottom Receiver	SEISOBR	OBS deployed	5° 31,591' S	148° 4,403' E	850.5
SO252_12-6	19/11/2016 02:31:42	Seismic Ocean Bottom Receiver	SEISOBR	OBS deployed	5° 31,166' S	148° 4,054' E	892.6
SO252_12-7	19/11/2016 02:48:47	Seismic Ocean Bottom Receiver	SEISOBR	OBS deployed	5° 30,698' S	148° 3,721' E	919.8
SO252_12-8	19/11/2016 03:00:07	Seismic Ocean Bottom Receiver	SEISOBR	OBS deployed	5° 30,355' S	148° 3,433' E	923.6
SO252_12-9	19/11/2016 03:16:34	Seismic Ocean Bottom Receiver	SEISOBR	OBS deployed	5° 29,899' S	148° 3,098' E	969.1
SO252_12-10	19/11/2016 03:32:40	Seismic Ocean Bottom Receiver	SEISOBR	OBS deployed	5° 29,447' S	148° 2,724' E	980.7
SO252_12-11	19/11/2016 03:48:11	Seismic Ocean Bottom Receiver	SEISOBR	OBS deployed	5° 28,992' S	148° 2,329' E	965.5
SO252_13-1	19/11/2016 04:35:39	KONGSBERG EM122	EM122	station start	5° 28,924' S	147° 59,017' E	824.1
SO252_13-1	19/11/2016 04:35:50	KONGSBERG EM122	EM122	profile start	5° 28,909' S	147° 58,998' E	825.8
SO252_13-1	19/11/2016 06:35:09	KONGSBERG EM122	EM122	alter course	5° 18,069' S	147° 47,259' E	1486.4
SO252_13-1	19/11/2016 07:15:51	KONGSBERG EM122	EM122	alter course	5° 13,207' S	147° 49,579' E	1790.7
SO252_13-1	19/11/2016 08:41:14	KONGSBERG EM122	EM122	profile end	5° 3,245' S	147° 43,915' E	1820.7

Station	Date / Time UTC	Device	Device Abbreviation	Action	Latitude	Longitude	Depth (m)
SO252_13-1	19/11/2016 08:41:22	KONGSBERG EM122	EM122	station end	5° 3,229' S	147° 43,906' E	1818.8
SO252_14-1	19/11/2016 09:46:00	Gravity Corer	GC	station start	4° 53,770' S	147° 45,654' E	1838.9
SO252_14-1	19/11/2016 09:54:25	Gravity Corer	GC	in the water	4° 53,751' S	147° 45,642' E	1839
SO252_14-1	19/11/2016 10:32:50	Gravity Corer	GC	max depth/on ground	4° 53,725' S	147° 45,631' E	1838.8
SO252_14-1	19/11/2016 10:34:07	Gravity Corer	GC	hoisting	4° 53,727' S	147° 45,631' E	1839.2
SO252_14-1	19/11/2016 11:22:42	Gravity Corer	GC	on deck	4° 53,726' S	147° 45,632' E	1839.2
SO252_14-1	19/11/2016 11:38:15	Gravity Corer	GC	station end	4° 53,725' S	147° 45,630' E	1839.5
SO252_14-2	19/11/2016 11:40:08	Gravity Corer	GC	station start	4° 53,725' S	147° 45,631' E	1839
SO252_14-2	19/11/2016 11:46:57	Gravity Corer	GC	in the water	4° 53,724' S	147° 45,634' E	1838.1
SO252_14-2	19/11/2016 12:26:50	Gravity Corer	GC	max depth/on ground	4° 53,721' S	147° 45,631' E	1839.2
SO252_14-2	19/11/2016 12:27:01	Gravity Corer	GC	hoisting	4° 53,721' S	147° 45,631' E	1839
SO252_14-2	19/11/2016 13:14:01	Gravity Corer	GC	on deck	4° 53,728' S	147° 45,630' E	1838.6
SO252_14-2	19/11/2016 13:15:25	Gravity Corer	GC	station end	4° 53,728' S	147° 45,630' E	1838.6
SO252_15-1	19/11/2016 14:18:26	Gravity Corer	GC	station start	4° 57,095' S	147° 53,483' E	1835.6
SO252_15-1	19/11/2016 14:21:39	Gravity Corer	GC	in the water	4° 57,095' S	147° 53,488' E	1833.8
SO252_15-1	19/11/2016 14:57:29	Gravity Corer	GC	max depth/on ground	4° 57,112' S	147° 53,507' E	1833.1
SO252_15-1	19/11/2016 14:58:15	Gravity Corer	GC	hoisting	4° 57,112' S	147° 53,507' E	1832.8
SO252_15-1	19/11/2016 15:40:24	Gravity Corer	GC	on deck	4° 57,107' S	147° 53,511' E	1833
SO252_15-1	19/11/2016 15:42:45	Gravity Corer	GC	station end	4° 57,107' S	147° 53,510' E	1833.1
SO252_16-1	19/11/2016 16:41:30	Gravity Corer	GC	station start	5° 4,869' S	147° 55,580' E	1822.1
SO252_16-1	19/11/2016 16:45:24	Gravity Corer	GC	in the water	5° 4,936' S	147° 55,608' E	1821.4
SO252_16-1	19/11/2016 17:19:56	Gravity Corer	GC	max depth/on ground	5° 4,924' S	147° 55,610' E	1821.4
SO252_16-1	19/11/2016 17:20:17	Gravity Corer	GC	hoisting	5° 4,924' S	147° 55,610' E	1821.2

Station	Date / Time UTC	Device	Device Abbreviation	Action	Latitude	Longitude	Depth (m)
SO252_16-1	19/11/2016 18:02:17	Gravity Corer	GC	on deck	5° 4,930' S	147° 55,610' E	1821
SO252_16-1	19/11/2016 18:27:12	Gravity Corer	GC	station end	5° 4,920' S	147° 55,616' E	1820.7
SO252_17-1	19/11/2016 22:24:56	Seismic Towed Receiver	SEISTR	station start	5° 29,912' S	148° 7,905' E	917.2
SO252_17-1	19/11/2016 22:26:25	Seismic Towed Receiver	SEISTR	in the water	5° 29,941' S	148° 7,910' E	915
SO252_17-1	19/11/2016 23:45:09	Seismic Towed Receiver	SEISTR	in the water	5° 31,371' S	148° 8,186' E	871.4
SO252_17-1	19/11/2016 23:53:07	Seismic Towed Receiver	SEISTR	in the water	5° 31,503' S	148° 8,190' E	879.9
SO252_17-1	20/11/2016 00:07:30	Seismic Towed Receiver	SEISTR	information	5° 31,750' S	148° 8,223' E	894.4
SO252_17-1	20/11/2016 00:19:02	Seismic Towed Receiver	SEISTR	in the water	5° 32,164' S	148° 8,186' E	898.4
SO252_17-1	20/11/2016 00:23:36	Seismic Towed Receiver	SEISTR	on deck	5° 32,342' S	148° 8,163' E	925.6
SO252_17-1	20/11/2016 00:25:06	Seismic Towed Receiver	SEISTR	in the water	5° 32,405' S	148° 8,155' E	936.4
SO252_17-1	20/11/2016 00:30:39	Seismic Towed Receiver	SEISTR	information	5° 32,636' S	148° 8,122' E	957.2
SO252_17-1	20/11/2016 00:31:37	Seismic Towed Receiver	SEISTR	alter course	5° 32,677' S	148° 8,117' E	960.3
SO252_17-1	20/11/2016 01:03:24	Seismic Towed Receiver	SEISTR	alter course	5° 33,035' S	148° 6,720' E	716.7
SO252_17-1	20/11/2016 01:10:08	Seismic Towed Receiver	SEISTR	profile start	5° 32,895' S	148° 6,369' E	654.7
SO252_17-1	20/11/2016 01:30:25	Seismic Towed Receiver	SEISTR	information	5° 32,203' S	148° 5,277' E	669.6
SO252_17-1	20/11/2016 03:25:00	Seismic Towed Receiver	SEISTR	alter course	5° 28,435' S	147° 59,232' E	987.9
SO252_17-1	20/11/2016 03:47:00	Seismic Towed Receiver	SEISTR	alter course	5° 27,494' S	147° 59,743' E	1216.2
SO252_17-1	20/11/2016 06:25:19	Seismic Towed Receiver	SEISTR	alter course	5° 31,262' S	148° 5,873' E	590.6
SO252_17-1	20/11/2016 06:44:38	Seismic Towed Receiver	SEISTR	alter course	5° 32,082' S	148° 5,448' E	606.4
SO252_17-1	20/11/2016 08:52:52	Seismic Towed Receiver	SEISTR	alter course	5° 28,487' S	147° 59,364' E	935.6
SO252_17-1	20/11/2016 09:14:31	Seismic Towed Receiver	SEISTR	alter course	5° 27,503' S	147° 59,704' E	1210.3
SO252_17-1	20/11/2016 12:00:18	Seismic Towed Receiver	SEISTR	alter course	5° 31,128' S	148° 5,831' E	615.2
SO252_17-1	20/11/2016 12:20:34	Seismic Towed Receiver	SEISTR	alter course	5° 32,101' S	148° 5,429' E	615.5

Station	Date / Time UTC	Device	Device Abbreviation	Action	Latitude	Longitude	Depth (m)
SO252_17-1	20/11/2016 14:20:06	Seismic Towed Receiver	SEISTR	alter course	5° 28,415' S	147° 59,314' E	986.6
SO252_17-1	20/11/2016 14:50:23	Seismic Towed Receiver	SEISTR	alter course	5° 27,389' S	147° 59,682' E	1221.4
SO252_17-1	20/11/2016 17:41:55	Seismic Towed Receiver	SEISTR	alter course	5° 31,136' S	148° 5,895' E	576.4
SO252_17-1	20/11/2016 18:00:00	Seismic Towed Receiver	SEISTR	alter course	5° 31,978' S	148° 5,540' E	570.3
SO252_17-1	20/11/2016 20:05:57	Seismic Towed Receiver	SEISTR	alter course	5° 28,384' S	147° 59,347' E	1003.8
SO252_17-1	20/11/2016 20:26:50	Seismic Towed Receiver	SEISTR	alter course	5° 27,430' S	147° 59,745' E	1224.2
SO252_17-1	20/11/2016 22:56:22	Seismic Towed Receiver	SEISTR	profile end	5° 31,139' S	148° 5,952' E	495
SO252_17-1	20/11/2016 23:10:00	Seismic Towed Receiver	SEISTR	on deck	5° 31,615' S	148° 6,073' E	404
SO252_17-1	20/11/2016 23:40:44	Seismic Towed Receiver	SEISTR	on deck	5° 32,315' S	148° 6,364' E	457.6
SO252_17-1	21/11/2016 00:11:00	Seismic Towed Receiver	SEISTR	on deck	5° 32,855' S	148° 6,808' E	666
SO252_17-1	21/11/2016 00:21:18	Seismic Towed Receiver	SEISTR	on deck	5° 33,050' S	148° 6,966' E	778.5
SO252_17-1	21/11/2016 00:22:43	Seismic Towed Receiver	SEISTR	station end	5° 33,078' S	148° 6,991' E	792.7
SO252_18-1	21/11/2016 00:30:03	Seismic Source	SEISSRC	station start	5° 33,231' S	148° 7,113' E	832.7
SO252_18-1	21/11/2016 00:32:16	Seismic Source	SEISSRC	Airgun in water	5° 33,276' S	148° 7,144' E	844
SO252_18-1	21/11/2016 00:38:13	Seismic Source	SEISSRC	information	5° 33,394' S	148° 7,228' E	877.3
SO252_18-1	21/11/2016 01:08:20	Seismic Source	SEISSRC	alter course	5° 35,220' S	148° 7,179' E	733.2
SO252_18-1	21/11/2016 01:18:21	Seismic Source	SEISSRC	alter course	5° 35,027' S	148° 6,209' E	742.1
SO252_18-1	21/11/2016 01:24:52	Seismic Source	SEISSRC	profile start	5° 34,675' S	148° 6,300' E	676.9
SO252_18-1	21/11/2016 02:55:01	Seismic Source	SEISSRC	alter course	5° 31,043' S	148° 11,472' E	1205.5
SO252_18-1	21/11/2016 03:54:20	Seismic Source	SEISSRC	alter course	5° 34,704' S	148° 10,425' E	877.9
SO252_18-1	21/11/2016 05:47:13	Seismic Source	SEISSRC	alter course	5° 26,914' S	148° 8,496' E	1078
SO252_18-1	21/11/2016 06:28:52	Seismic Source	SEISSRC	alter course	5° 28,476' S	148° 10,332' E	1258.7
SO252_18-1	21/11/2016 08:24:45	Seismic Source	SEISSRC	alter course	5° 32,386' S	148° 2,687' E	401.7

Station	Date / Time UTC	Device	Device Abbreviation	Action	Latitude	Longitude	Depth (m)
SO252_18-1	21/11/2016 09:51:43	Seismic Source	SEISSRC	alter course	5° 26,210' S	147° 59,700' E	1388.7
SO252_18-1	21/11/2016 12:53:35	Seismic Source	SEISSRC	profile end	5° 34,800' S	148° 7,071' E	788
SO252_18-1	21/11/2016 12:59:45	Seismic Source	SEISSRC	on deck	5° 34,915' S	148° 7,229' E	791.5
SO252_18-1	21/11/2016 13:00:50	Seismic Source	SEISSRC	station end	5° 34,918' S	148° 7,251' E	793.4
SO252_19-1	21/11/2016 14:49:12	OFOS	OFOS	station start	5° 28,646' S	148° 3,643' E	890
SO252_19-1	21/11/2016 14:50:33	OFOS	OFOS	in the water	5° 28,646' S	148° 3,638' E	890
SO252_19-1	21/11/2016 14:52:40	OFOS	OFOS	max depth/on ground	5° 28,647' S	148° 3,639' E	890
SO252_19-1	21/11/2016 14:57:56	OFOS	OFOS	on deck	5° 28,648' S	148° 3,643' E	890
SO252_19-1	21/11/2016 14:59:04	OFOS	OFOS	station end	5° 28,648' S	148° 3,644' E	890
SO252_19-2	21/11/2016 15:10:23	OFOS	OFOS	station start	5° 28,643' S	148° 3,644' E	891
SO252_19-2	21/11/2016 15:12:29	OFOS	OFOS	in the water	5° 28,645' S	148° 3,643' E	890
SO252_19-2	21/11/2016 15:46:21	OFOS	OFOS	max depth/on ground	5° 28,643' S	148° 3,644' E	892
SO252_19-2	21/11/2016 17:24:06	OFOS	OFOS	hoisting	5° 29,397' S	148° 2,987' E	0
SO252_19-2	21/11/2016 17:30:47	OFOS	OFOS	information	5° 29,390' S	148° 2,989' E	0
SO252_19-2	21/11/2016 17:57:27	OFOS	OFOS	max depth/on ground	5° 29,393' S	148° 2,993' E	963
SO252_19-2	21/11/2016 18:04:25	OFOS	OFOS	hoisting	5° 29,414' S	148° 2,976' E	0
SO252_19-2	21/11/2016 18:37:26	OFOS	OFOS	on deck	5° 29,413' S	148° 2,974' E	919
SO252_19-2	21/11/2016 18:39:43	OFOS	OFOS	station end	5° 29,413' S	148° 2,973' E	917
SO252_20-1	21/11/2016 19:05:23	OFOS	OFOS	station start	5° 29,950' S	148° 3,532' E	732
SO252_20-1	21/11/2016 19:07:38	OFOS	OFOS	in the water	5° 29,950' S	148° 3,526' E	0
SO252_20-1	21/11/2016 19:34:00	OFOS	OFOS	max depth/on ground	5° 29,979' S	148° 3,542' E	0
SO252_20-1	21/11/2016 20:48:57	OFOS	OFOS	hoisting	5° 29,886' S	148° 3,384' E	0
SO252_20-1	21/11/2016 21:07:16	OFOS	OFOS	on deck	5° 29,889' S	148° 3,391' E	0

Station	Date / Time UTC	Device	Device Abbreviation	Action	Latitude	Longitude	Depth (m)
SO252_20-1	21/11/2016 21:07:41	OFOS	OFOS	station end	5° 29,889' S	148° 3,391' E	815
SO252_21-1	21/11/2016 22:00:04	Seismic Towed Receiver	SEISTR	station start	5° 29,940' S	148° 3,409' E	0
SO252_21-1	21/11/2016 22:18:03	Seismic Towed Receiver	SEISTR	in the water	5° 30,269' S	148° 3,654' E	926
SO252_21-1	21/11/2016 23:11:27	Seismic Towed Receiver	SEISTR	in the water	5° 30,947' S	148° 4,489' E	724
SO252_21-1	21/11/2016 23:13:37	Seismic Towed Receiver	SEISTR	in the water	5° 30,962' S	148° 4,523' E	717
SO252_21-1	21/11/2016 23:33:01	Seismic Towed Receiver	SEISTR	in the water	5° 31,334' S	148° 4,999' E	728
SO252_21-1	21/11/2016 23:35:44	Seismic Towed Receiver	SEISTR	information	5° 31,356' S	148° 5,067' E	725.6
SO252_21-1	21/11/2016 23:36:28	Seismic Towed Receiver	SEISTR	information	5° 31,362' S	148° 5,089' E	713.4
SO252_21-1	22/11/2016 00:00:02	Seismic Towed Receiver	SEISTR	alter course	5° 31,825' S	148° 6,011' E	339.7
SO252_21-1	22/11/2016 00:07:46	Seismic Towed Receiver	SEISTR	alter course	5° 32,184' S	148° 5,936' E	486.7
SO252_21-1	22/11/2016 00:16:35	Seismic Towed Receiver	SEISTR	profile start	5° 32,177' S	148° 5,490' E	601
SO252_21-1	22/11/2016 00:51:30	Seismic Towed Receiver	SEISTR	alter course	5° 31,059' S	148° 3,677' E	904.5
SO252_21-1	22/11/2016 02:12:54	Seismic Towed Receiver	SEISTR	alter course	5° 28,363' S	147° 59,404' E	1005.9
SO252_21-1	22/11/2016 02:33:15	Seismic Towed Receiver	SEISTR	alter course	5° 27,356' S	147° 59,768' E	1227.5
SO252_21-1	22/11/2016 05:00:28	Seismic Towed Receiver	SEISTR	alter course	5° 31,021' S	148° 5,862' E	607.5
SO252_21-1	22/11/2016 05:17:08	Seismic Towed Receiver	SEISTR	alter course	5° 31,897' S	148° 5,576' E	599.1
SO252_21-1	22/11/2016 06:57:02	Seismic Towed Receiver	SEISTR	alter course	5° 28,359' S	147° 59,450' E	1025.1
SO252_21-1	22/11/2016 07:16:34	Seismic Towed Receiver	SEISTR	alter course	5° 27,407' S	147° 59,757' E	1223.2
SO252_21-1	22/11/2016 10:00:00	Seismic Towed Receiver	SEISTR	alter course	5° 30,957' S	148° 5,832' E	650
SO252_21-1	22/11/2016 10:22:26	Seismic Towed Receiver	SEISTR	alter course	5° 31,917' S	148° 5,566' E	591.7
SO252_21-1	22/11/2016 12:16:17	Seismic Towed Receiver	SEISTR	alter course	5° 28,343' S	147° 59,497' E	1056.4
SO252_21-1	22/11/2016 12:37:57	Seismic Towed Receiver	SEISTR	alter course	5° 27,374' S	147° 59,768' E	1226.2
SO252_21-1	22/11/2016 15:09:11	Seismic Towed Receiver	SEISTR	alter course	5° 31,019' S	148° 5,983' E	508.7

Station	Date / Time UTC	Device	Device Abbreviation	Action	Latitude	Longitude	Depth (m)
SO252_21-1	22/11/2016 15:27:00	Seismic Towed Receiver	SEISTR	alter course	5° 31,886' S	148° 5,597' E	599.4
SO252_21-1	22/11/2016 17:27:00	Seismic Towed Receiver	SEISTR	alter course	5° 28,189' S	147° 59,372' E	1080.2
SO252_21-1	22/11/2016 17:45:52	Seismic Towed Receiver	SEISTR	alter course	5° 27,356' S	147° 59,799' E	1233
SO252_21-1	22/11/2016 20:16:26	Seismic Towed Receiver	SEISTR	alter course	5° 30,961' S	148° 5,971' E	547.9
SO252_21-1	22/11/2016 20:33:58	Seismic Towed Receiver	SEISTR	alter course	5° 31,873' S	148° 5,604' E	604.9
SO252_21-1	22/11/2016 22:33:51	Seismic Towed Receiver	SEISTR	alter course	5° 28,244' S	147° 59,500' E	1084.9
SO252_21-1	22/11/2016 22:52:57	Seismic Towed Receiver	SEISTR	alter course	5° 27,350' S	147° 59,806' E	1236.7
SO252_21-1	23/11/2016 01:20:23	Seismic Towed Receiver	SEISTR	alter course	5° 30,925' S	148° 5,993' E	546.4
SO252_21-1	23/11/2016 01:25:14	Seismic Towed Receiver	SEISTR	information	5° 31,175' S	148° 6,018' E	493.3
SO252_21-1	23/11/2016 01:33:02	Seismic Towed Receiver	SEISTR	on deck	5° 31,546' S	148° 5,816' E	615.8
SO252_21-1	23/11/2016 01:40:51	Seismic Towed Receiver	SEISTR	in the water	5° 31,789' S	148° 5,751' E	567.4
SO252_21-1	23/11/2016 01:45:32	Seismic Towed Receiver	SEISTR	alter course	5° 31,985' S	148° 5,751' E	471.3
SO252_21-1	23/11/2016 02:00:46	Seismic Towed Receiver	SEISTR	information	5° 31,757' S	148° 5,121' E	739.6
SO252_21-1	23/11/2016 03:49:08	Seismic Towed Receiver	SEISTR	alter course	5° 28,148' S	147° 59,426' E	1103.6
SO252_21-1	23/11/2016 04:08:09	Seismic Towed Receiver	SEISTR	alter course	5° 27,245' S	147° 59,877' E	1257.9
SO252_21-1	23/11/2016 06:44:09	Seismic Towed Receiver	SEISTR	information	5° 30,877' S	148° 6,012' E	549
SO252_21-1	23/11/2016 06:50:20	Seismic Towed Receiver	SEISTR	information	5° 30,968' S	148° 6,105' E	455.3
SO252_21-1	23/11/2016 07:37:33	Seismic Towed Receiver	SEISTR	information	5° 32,415' S	148° 6,272' E	491.4
SO252_21-1	23/11/2016 07:39:40	Seismic Towed Receiver	SEISTR	information	5° 32,348' S	148° 6,178' E	476.4
SO252_21-1	23/11/2016 09:47:58	Seismic Towed Receiver	SEISTR	alter course	5° 28,177' S	147° 59,518' E	1107.4
SO252_21-1	23/11/2016 10:05:28	Seismic Towed Receiver	SEISTR	alter course	5° 27,286' S	147° 59,842' E	1247.8
SO252_21-1	23/11/2016 12:37:41	Seismic Towed Receiver	SEISTR	alter course	5° 30,840' S	148° 6,006' E	558.8
SO252_21-1	23/11/2016 13:00:07	Seismic Towed Receiver	SEISTR	alter course	5° 31,827' S	148° 5,568' E	641.5

Station	Date / Time UTC	Device	Device Abbreviation	Action	Latitude	Longitude	Depth (m)
SO252_21-1	23/11/2016 15:00:00	Seismic Towed Receiver	SEISTR	alter course	5° 28,148' S	147° 59,544' E	1122.4
SO252_21-1	23/11/2016 15:18:00	Seismic Towed Receiver	SEISTR	information	5° 27,135' S	147° 59,985' E	1242.8
SO252_21-1	23/11/2016 16:35:35	Seismic Towed Receiver	SEISTR	information	5° 28,807' S	148° 2,819' E	945
SO252_21-1	23/11/2016 16:46:55	Seismic Towed Receiver	SEISTR	information	5° 29,061' S	148° 3,235' E	928.7
SO252_21-1	23/11/2016 16:50:42	Seismic Towed Receiver	SEISTR	information	5° 29,099' S	148° 3,319' E	928.9
SO252_21-1	23/11/2016 17:08:32	Seismic Towed Receiver	SEISTR	information	5° 29,361' S	148° 3,714' E	900.6
SO252_21-1	23/11/2016 17:12:51	Seismic Towed Receiver	SEISTR	information	5° 29,422' S	148° 3,818' E	910.2
SO252_21-1	23/11/2016 18:11:27	Seismic Towed Receiver	SEISTR	alter course	5° 30,835' S	148° 6,048' E	534.2
SO252_21-1	23/11/2016 18:27:22	Seismic Towed Receiver	SEISTR	alter course	5° 31,713' S	148° 5,684' E	631.9
SO252_21-1	23/11/2016 20:30:09	Seismic Towed Receiver	SEISTR	alter course	5° 28,129' S	147° 59,581' E	1132.5
SO252_21-1	23/11/2016 20:51:40	Seismic Towed Receiver	SEISTR	alter course	5° 27,184' S	147° 59,913' E	1261.8
SO252_21-1	23/11/2016 23:15:12	Seismic Towed Receiver	SEISTR	alter course	5° 30,755' S	148° 6,011' E	585.2
SO252_21-1	23/11/2016 23:18:45	Seismic Towed Receiver	SEISTR	information	5° 30,876' S	148° 6,132' E	472.2
SO252_21-1	23/11/2016 23:24:56	Seismic Towed Receiver	SEISTR	on deck	5° 31,144' S	148° 6,056' E	468.4
SO252_21-1	23/11/2016 23:30:01	Seismic Towed Receiver	SEISTR	in the water	5° 31,377' S	148° 5,906' E	573.3
SO252_21-1	23/11/2016 23:32:58	Seismic Towed Receiver	SEISTR	information	5° 31,501' S	148° 5,828' E	610.4
SO252_21-1	23/11/2016 23:37:51	Seismic Towed Receiver	SEISTR	alter course	5° 31,724' S	148° 5,687' E	633.1
SO252_21-1	24/11/2016 01:52:40	Seismic Towed Receiver	SEISTR	alter course	5° 28,112' S	147° 59,611' E	1139.4
SO252_21-1	24/11/2016 02:15:06	Seismic Towed Receiver	SEISTR	alter course	5° 27,167' S	147° 59,931' E	1261.5
SO252_21-1	24/11/2016 02:15:21	Seismic Towed Receiver	SEISTR	information	5° 27,160' S	147° 59,936' E	1261
SO252_21-1	24/11/2016 02:21:31	Seismic Towed Receiver	SEISTR	information	5° 27,077' S	148° 0,110' E	1230.3
SO252_21-1	24/11/2016 02:26:37	Seismic Towed Receiver	SEISTR	information	5° 27,176' S	148° 0,323' E	1272.8
SO252_21-1	24/11/2016 02:45:52	Seismic Towed Receiver	SEISTR	information	5° 27,612' S	147° 59,920' E	1211.2

Station	Date / Time UTC	Device	Device Abbreviation	Action	Latitude	Longitude	Depth (m)
SO252_21-1	24/11/2016 02:49:43	Seismic Towed Receiver	SEISTR	information	5° 27,547' S	147° 59,809' E	1218.3
SO252_21-1	24/11/2016 03:09:15	Seismic Towed Receiver	SEISTR	information	5° 27,148' S	148° 0,274' E	1279.4
SO252_21-1	24/11/2016 05:25:04	Seismic Towed Receiver	SEISTR	alter course	5° 30,807' S	148° 6,122' E	502.1
SO252_21-1	24/11/2016 05:44:00	Seismic Towed Receiver	SEISTR	alter course	5° 31,735' S	148° 5,684' E	632.7
SO252_21-1	24/11/2016 08:14:16	Seismic Towed Receiver	SEISTR	alter course	5° 28,050' S	147° 59,594' E	1154.5
SO252_21-1	24/11/2016 08:35:22	Seismic Towed Receiver	SEISTR	alter course	5° 27,127' S	147° 59,957' E	1257.1
SO252_21-1	24/11/2016 10:37:57	Seismic Towed Receiver	SEISTR	alter course	5° 30,738' S	148° 6,119' E	535.6
SO252_21-1	24/11/2016 10:54:01	Seismic Towed Receiver	SEISTR	alter course	5° 31,631' S	148° 5,766' E	625.9
SO252_21-1	24/11/2016 13:29:07	Seismic Towed Receiver	SEISTR	alter course	5° 28,040' S	147° 59,644' E	1150.8
SO252_21-1	24/11/2016 13:51:10	Seismic Towed Receiver	SEISTR	alter course	5° 27,131' S	147° 59,955' E	1260.4
SO252_21-1	24/11/2016 16:00:00	Seismic Towed Receiver	SEISTR	alter course	5° 30,843' S	148° 6,203' E	450
SO252_21-1	24/11/2016 16:16:04	Seismic Towed Receiver	SEISTR	alter course	5° 31,586' S	148° 5,797' E	625.7
SO252_21-1	24/11/2016 17:57:51	Seismic Towed Receiver	SEISTR	information	5° 29,465' S	148° 1,996' E	1023.5
SO252_21-1	24/11/2016 18:06:30	Seismic Towed Receiver	SEISTR	information	5° 29,302' S	148° 1,730' E	1035.9
SO252_21-1	24/11/2016 18:49:16	Seismic Towed Receiver	SEISTR	information	5° 28,450' S	148° 0,369' E	989.9
SO252_21-1	24/11/2016 18:56:07	Seismic Towed Receiver	SEISTR	information	5° 28,304' S	148° 0,132' E	814.6
SO252_21-1	24/11/2016 19:07:30	Seismic Towed Receiver	SEISTR	alter course	5° 27,998' S	147° 59,653' E	1167.2
SO252_21-1	24/11/2016 19:29:27	Seismic Towed Receiver	SEISTR	alter course	5° 27,069' S	147° 59,986' E	1250.5
SO252_21-1	24/11/2016 21:32:02	Seismic Towed Receiver	SEISTR	alter course	5° 30,657' S	148° 6,136' E	555.7
SO252_21-1	24/11/2016 21:50:27	Seismic Towed Receiver	SEISTR	alter course	5° 31,494' S	148° 5,858' E	598.6
SO252_21-1	25/11/2016 00:18:14	Seismic Towed Receiver	SEISTR	information	5° 29,766' S	148° 2,550' E	983.1
SO252_21-1	25/11/2016 00:23:45	Seismic Towed Receiver	SEISTR	on deck	5° 29,649' S	148° 2,360' E	1011.3
SO252_21-1	25/11/2016 01:19:42	Seismic Towed Receiver	SEISTR	in the water	5° 28,615' S	148° 0,721' E	1124.7

Station	Date / Time UTC	Device	Device Abbreviation	Action	Latitude	Longitude	Depth (m)
SO252_21-1	25/11/2016 01:21:34	Seismic Towed Receiver	SEISTR	information	5° 28,571' S	148° 0,660' E	1159.2
SO252_21-1	25/11/2016 01:43:51	Seismic Towed Receiver	SEISTR	alter course	5° 27,970' S	147° 59,674' E	1163.4
SO252_21-1	25/11/2016 02:05:36	Seismic Towed Receiver	SEISTR	alter course	5° 26,991' S	148° 0,056' E	1250.5
SO252_21-1	25/11/2016 03:00:00	Seismic Towed Receiver	SEISTR	alter course	5° 28,568' S	148° 2,860' E	910.3
SO252_21-1	25/11/2016 03:57:37	Seismic Towed Receiver	SEISTR	information	5° 30,503' S	148° 5,439' E	681.2
SO252_21-1	25/11/2016 03:58:16	Seismic Towed Receiver	SEISTR	information	5° 30,538' S	148° 5,437' E	693.4
SO252_21-1	25/11/2016 04:00:00	Seismic Towed Receiver	SEISTR	information	5° 30,632' S	148° 5,433' E	705.8
SO252_21-1	25/11/2016 04:40:11	Seismic Towed Receiver	SEISTR	information	5° 32,134' S	148° 6,492' E	379.8
SO252_21-1	25/11/2016 05:34:13	Seismic Towed Receiver	SEISTR	information	5° 31,699' S	148° 5,754' E	610.9
SO252_21-1	25/11/2016 08:03:30	Seismic Towed Receiver	SEISTR	alter course	5° 27,941' S	147° 59,706' E	1171.9
SO252_21-1	25/11/2016 08:24:51	Seismic Towed Receiver	SEISTR	alter course	5° 26,979' S	148° 0,055' E	1254.2
SO252_21-1	25/11/2016 10:22:42	Seismic Towed Receiver	SEISTR	alter course	5° 30,623' S	148° 6,204' E	531.7
SO252_21-1	25/11/2016 10:40:18	Seismic Towed Receiver	SEISTR	alter course	5° 31,531' S	148° 5,828' E	615
SO252_21-1	25/11/2016 13:03:22	Seismic Towed Receiver	SEISTR	alter course	5° 27,898' S	147° 59,711' E	1180.8
SO252_21-1	25/11/2016 13:21:29	Seismic Towed Receiver	SEISTR	alter course	5° 27,014' S	148° 0,027' E	1244.8
SO252_21-1	25/11/2016 15:13:51	Seismic Towed Receiver	SEISTR	alter course	5° 30,588' S	148° 6,238' E	509
SO252_21-1	25/11/2016 15:35:02	Seismic Towed Receiver	SEISTR	alter course	5° 31,528' S	148° 5,794' E	629.6
SO252_21-1	25/11/2016 18:14:02	Seismic Towed Receiver	SEISTR	alter course	5° 27,854' S	147° 59,711' E	1186
SO252_21-1	25/11/2016 18:33:53	Seismic Towed Receiver	SEISTR	alter course	5° 26,889' S	148° 0,113' E	1322.9
SO252_21-1	25/11/2016 20:41:24	Seismic Towed Receiver	SEISTR	alter course	5° 30,495' S	148° 6,178' E	529.7
SO252_21-1	25/11/2016 21:00:04	Seismic Towed Receiver	SEISTR	alter course	5° 31,424' S	148° 5,894' E	582.2
SO252_21-1	25/11/2016 23:13:49	Seismic Towed Receiver	SEISTR	profile end	5° 27,833' S	147° 59,746' E	1192.2
SO252_21-1	25/11/2016 23:14:15	Seismic Towed Receiver	SEISTR	information	5° 27,822' S	147° 59,728' E	1195.9

Station	Date / Time UTC	Device	Device Abbreviation	Action	Latitude	Longitude	Depth (m)
SO252_21-1	25/11/2016 23:20:03	Seismic Towed Receiver	SEISTR	on deck	5° 27,706' S	147° 59,521' E	1185.8
SO252_21-1	25/11/2016 23:45:57	Seismic Towed Receiver	SEISTR	on deck	5° 27,175' S	147° 58,718' E	1230.3
SO252_21-1	26/11/2016 00:15:45	Seismic Towed Receiver	SEISTR	on deck	5° 26,603' S	147° 57,927' E	1315.1
SO252_21-1	26/11/2016 00:20:24	Seismic Towed Receiver	SEISTR	on deck	5° 26,520' S	147° 57,808' E	1319.7
SO252_21-1	26/11/2016 00:21:06	Seismic Towed Receiver	SEISTR	station end	5° 26,508' S	147° 57,791' E	1318
SO252_22-1	26/11/2016 01:12:38	Seismic Ocean Bottom Receiver	SEISOBR	station start	5° 29,379' S	148° 2,214' E	975.5
SO252_22-1	26/11/2016 01:15:52	Seismic Ocean Bottom Receiver	SEISOBR	information	5° 29,356' S	148° 2,221' E	980.7
SO252_22-1	26/11/2016 01:20:02	Seismic Ocean Bottom Receiver	SEISOBR	information	5° 29,324' S	148° 2,217' E	994.6
SO252_22-1	26/11/2016 01:36:01	Seismic Ocean Bottom Receiver	SEISOBR	information	5° 29,250' S	148° 2,252' E	993.9
SO252_22-1	26/11/2016 01:39:09	Seismic Ocean Bottom Receiver	SEISOBR	information	5° 29,147' S	148° 2,293' E	945
SO252_22-1	26/11/2016 01:47:23	Seismic Ocean Bottom Receiver	SEISOBR	information	5° 29,057' S	148° 2,418' E	960.5
SO252_22-1	26/11/2016 01:58:54	Seismic Ocean Bottom Receiver	SEISOBR	information	5° 29,488' S	148° 2,514' E	992.4
SO252_22-1	26/11/2016 02:05:38	Seismic Ocean Bottom Receiver	SEISOBR	information	5° 29,562' S	148° 2,857' E	938.2
SO252_22-1	26/11/2016 02:10:03	Seismic Ocean Bottom Receiver	SEISOBR	information	5° 29,597' S	148° 2,953' E	946.8
SO252_22-1	26/11/2016 02:19:33	Seismic Ocean Bottom Receiver	SEISOBR	information	5° 29,763' S	148° 3,202' E	941.1
SO252_22-1	26/11/2016 02:32:48	Seismic Ocean Bottom Receiver	SEISOBR	information	5° 30,030' S	148° 3,223' E	955.7
SO252_22-1	26/11/2016 02:34:54	Seismic Ocean Bottom Receiver	SEISOBR	information	5° 30,074' S	148° 3,250' E	956.6
SO252_22-1	26/11/2016 03:00:07	Seismic Ocean Bottom Receiver	SEISOBR	information	5° 30,410' S	148° 3,573' E	915.2
SO252_22-1	26/11/2016 03:15:16	Seismic Ocean Bottom Receiver	SEISOBR	information	5° 30,501' S	148° 3,707' E	923.5
SO252_22-1	26/11/2016 03:17:15	Seismic Ocean Bottom Receiver	SEISOBR	information	5° 30,510' S	148° 3,723' E	923.4
SO252_22-1	26/11/2016 03:34:14	Seismic Ocean Bottom Receiver	SEISOBR	information	5° 30,552' S	148° 3,720' E	920.9
SO252_22-1	26/11/2016 03:48:24	Seismic Ocean Bottom Receiver	SEISOBR	information	5° 30,842' S	148° 3,914' E	912.7
SO252_22-1	26/11/2016 03:50:03	Seismic Ocean Bottom Receiver	SEISOBR	information	5° 30,857' S	148° 3,915' E	912.6

Station	Date / Time UTC	Device	Device Abbreviation	Action	Latitude	Longitude	Depth (m)
SO252_22-1	26/11/2016 04:05:05	Seismic Ocean Bottom Receiver	SEISOBR	information	5° 31,159' S	148° 4,079' E	890.3
SO252_22-1	26/11/2016 04:23:17	Seismic Ocean Bottom Receiver	SEISOBR	information	5° 31,383' S	148° 4,356' E	853.4
SO252_22-1	26/11/2016 04:27:25	Seismic Ocean Bottom Receiver	SEISOBR	information	5° 31,381' S	148° 4,513' E	843.8
SO252_22-1	26/11/2016 04:38:32	Seismic Ocean Bottom Receiver	SEISOBR	information	5° 31,586' S	148° 4,405' E	849.3
SO252_22-1	26/11/2016 04:42:16	Seismic Ocean Bottom Receiver	SEISOBR	information	5° 31,642' S	148° 4,461' E	837.4
SO252_22-1	26/11/2016 05:05:52	Seismic Ocean Bottom Receiver	SEISOBR	information	5° 33,330' S	148° 6,282' E	769.6
SO252_22-1	26/11/2016 05:17:55	Seismic Ocean Bottom Receiver	SEISOBR	information	5° 34,101' S	148° 7,089' E	873.1
SO252_22-1	26/11/2016 06:01:29	Seismic Ocean Bottom Receiver	SEISOBR	information	5° 34,154' S	148° 7,875' E	903.4
SO252_22-1	26/11/2016 06:05:05	Seismic Ocean Bottom Receiver	SEISOBR	information	5° 34,160' S	148° 7,989' E	900.2
SO252_22-1	26/11/2016 06:20:10	Seismic Ocean Bottom Receiver	SEISOBR	information	5° 33,411' S	148° 8,926' E	929.1
SO252_22-1	26/11/2016 06:40:40	Seismic Ocean Bottom Receiver	SEISOBR	information	5° 33,282' S	148° 8,682' E	948.7
SO252_22-1	26/11/2016 06:41:45	Seismic Ocean Bottom Receiver	SEISOBR	information	5° 33,311' S	148° 8,671' E	940.6
SO252_22-1	26/11/2016 07:47:00	Seismic Ocean Bottom Receiver	SEISOBR	information	5° 31,203' S	148° 9,552' E	1143.8
SO252_22-1	26/11/2016 08:07:04	Seismic Ocean Bottom Receiver	SEISOBR	information	5° 29,995' S	148° 9,484' E	1174.8
SO252_22-1	26/11/2016 08:28:12	Seismic Ocean Bottom Receiver	SEISOBR	information	5° 29,410' S	148° 9,156' E	1160.7
SO252_22-1	26/11/2016 08:42:16	Seismic Ocean Bottom Receiver	SEISOBR	information	5° 29,379' S	148° 9,272' E	1166.1
SO252_22-1	26/11/2016 09:00:07	Seismic Ocean Bottom Receiver	SEISOBR	station end	5° 29,675' S	148° 9,815' E	1207.9
SO252_23-1	26/11/2016 09:52:27	Heat-Flow probe	HF	station start	5° 26,025' S	148° 14,217' E	1432
SO252_23-1	26/11/2016 10:00:00	Heat-Flow probe	HF	in the water	5° 26,031' S	148° 14,215' E	1433.9
SO252_23-1	26/11/2016 10:05:12	Heat-Flow probe	HF	in the water	5° 26,028' S	148° 14,215' E	1432.3
SO252_23-1	26/11/2016 10:36:52	Heat-Flow probe	HF	max depth/on ground	5° 26,014' S	148° 14,197' E	1430.3
SO252_23-1	26/11/2016 10:38:44	Heat-Flow probe	HF	hoisting	5° 26,017' S	148° 14,198' E	1433.2
SO252_23-1	26/11/2016 10:41:54	Heat-Flow probe	HF	lowering	5° 26,015' S	148° 14,199' E	1431.4

Station	Date / Time UTC	Device	Device Abbreviation	Action	Latitude	Longitude	Depth (m)
SO252_23-1	26/11/2016 10:43:17	Heat-Flow probe	HF	max depth/on ground	5° 26,012' S	148° 14,197' E	1431.2
SO252_23-1	26/11/2016 11:00:03	Heat-Flow probe	HF	hoisting	5° 26,011' S	148° 14,201' E	1431.8
SO252_23-1	26/11/2016 11:02:33	Heat-Flow probe	HF	information	5° 26,009' S	148° 14,200' E	1436.3
SO252_23-1	26/11/2016 11:03:52	Heat-Flow probe	HF	station end	5° 26,009' S	148° 14,201' E	1435.2
SO252_23-2	26/11/2016 11:34:49	Heat-Flow probe	HF	station start	5° 26,418' S	148° 14,064' E	1417
SO252_23-2	26/11/2016 11:45:47	Heat-Flow probe	HF	lowering	5° 26,416' S	148° 14,060' E	1418.6
SO252_23-2	26/11/2016 11:49:17	Heat-Flow probe	HF	max depth/on ground	5° 26,416' S	148° 14,060' E	1420
SO252_23-2	26/11/2016 12:04:54	Heat-Flow probe	HF	hoisting	5° 26,438' S	148° 14,057' E	1418.2
SO252_23-2	26/11/2016 12:05:54	Heat-Flow probe	HF	information	5° 26,417' S	148° 14,065' E	1419.3
SO252_23-2	26/11/2016 12:33:24	Heat-Flow probe	HF	information	5° 26,565' S	148° 14,005' E	1411.8
SO252_23-2	26/11/2016 12:35:45	Heat-Flow probe	HF	information	5° 26,564' S	148° 14,002' E	1413.8
SO252_23-2	26/11/2016 12:39:45	Heat-Flow probe	HF	in the water	5° 26,565' S	148° 14,001' E	1411.7
SO252_23-2	26/11/2016 12:42:35	Heat-Flow probe	HF	information	5° 26,567' S	148° 14,004' E	1411.2
SO252_23-2	26/11/2016 12:50:11	Heat-Flow probe	HF	station end	5° 26,578' S	148° 13,995' E	1409.8
SO252_23-3	26/11/2016 13:13:56	Heat-Flow probe	HF	station start	5° 26,937' S	148° 13,848' E	1399.1
SO252_23-3	26/11/2016 13:19:22	Heat-Flow probe	HF	lowering	5° 26,932' S	148° 13,847' E	1399.4
SO252_23-3	26/11/2016 13:24:21	Heat-Flow probe	HF	max depth/on ground	5° 26,933' S	148° 13,849' E	1400
SO252_23-3	26/11/2016 13:39:15	Heat-Flow probe	HF	hoisting	5° 26,938' S	148° 13,847' E	1399.3
SO252_23-3	26/11/2016 13:45:46	Heat-Flow probe	HF	information	5° 26,938' S	148° 13,850' E	1402.1
SO252_23-3	26/11/2016 13:46:28	Heat-Flow probe	HF	station end	5° 26,939' S	148° 13,849' E	1399.9
SO252_23-4	26/11/2016 14:24:25	Heat-Flow probe	HF	station start	5° 27,499' S	148° 13,490' E	1381
SO252_23-4	26/11/2016 14:28:30	Heat-Flow probe	HF	lowering	5° 27,501' S	148° 13,486' E	1381.3
SO252_23-4	26/11/2016 14:31:06	Heat-Flow probe	HF	max depth/on ground	5° 27,500' S	148° 13,485' E	1380.4

Station	Date / Time UTC	Device	Device Abbreviation	Action	Latitude	Longitude	Depth (m)
SO252_23-4	26/11/2016 14:46:12	Heat-Flow probe	HF	hoisting	5° 27,498' S	148° 13,489' E	1382.5
SO252_23-4	26/11/2016 14:54:00	Heat-Flow probe	HF	information	5° 27,498' S	148° 13,487' E	1380.5
SO252_23-4	26/11/2016 14:54:21	Heat-Flow probe	HF	station end	5° 27,498' S	148° 13,487' E	1379.6
SO252_23-5	26/11/2016 15:38:18	Heat-Flow probe	HF	station start	5° 28,139' S	148° 13,173' E	1376.5
SO252_23-5	26/11/2016 15:38:37	Heat-Flow probe	HF	lowering	5° 28,139' S	148° 13,174' E	1376.9
SO252_23-5	26/11/2016 15:43:39	Heat-Flow probe	HF	max depth/on ground	5° 28,142' S	148° 13,173' E	1376.6
SO252_23-5	26/11/2016 15:58:41	Heat-Flow probe	HF	hoisting	5° 28,137' S	148° 13,177' E	1377.5
SO252_23-5	26/11/2016 16:28:02	Heat-Flow probe	HF	information	5° 28,138' S	148° 13,175' E	1378
SO252_23-5	26/11/2016 16:31:27	Heat-Flow probe	HF	information	5° 28,136' S	148° 13,175' E	1376.5
SO252_23-5	26/11/2016 16:37:26	Heat-Flow probe	HF	station end	5° 28,139' S	148° 13,175' E	1378
SO252_23-6	26/11/2016 17:15:29	Heat-Flow probe	HF	station start	5° 28,746' S	148° 12,806' E	1347.5
SO252_23-6	26/11/2016 17:19:15	Heat-Flow probe	HF	lowering	5° 28,751' S	148° 12,804' E	1339.9
SO252_23-6	26/11/2016 17:22:38	Heat-Flow probe	HF	information	5° 28,753' S	148° 12,800' E	1345.3
SO252_23-6	26/11/2016 17:23:13	Heat-Flow probe	HF	lowering	5° 28,752' S	148° 12,800' E	1347.4
SO252_23-6	26/11/2016 17:46:06	Heat-Flow probe	HF	max depth/on ground	5° 28,750' S	148° 12,803' E	1346.8
SO252_23-6	26/11/2016 18:00:18	Heat-Flow probe	HF	hoisting	5° 28,750' S	148° 12,799' E	1345.8
SO252_23-6	26/11/2016 18:03:51	Heat-Flow probe	HF	information	5° 28,749' S	148° 12,801' E	1346.2
SO252_23-6	26/11/2016 18:04:22	Heat-Flow probe	HF	station end	5° 28,748' S	148° 12,801' E	1346.2
SO252_23-7	26/11/2016 18:40:18	Heat-Flow probe	HF	station start	5° 29,242' S	148° 12,555' E	1320.5
SO252_23-7	26/11/2016 18:44:26	Heat-Flow probe	HF	lowering	5° 29,245' S	148° 12,550' E	1320
SO252_23-7	26/11/2016 18:48:28	Heat-Flow probe	HF	max depth/on ground	5° 29,248' S	148° 12,552' E	1323.3
SO252_23-7	26/11/2016 19:02:24	Heat-Flow probe	HF	hoisting	5° 29,241' S	148° 12,555' E	1321.5
SO252_23-7	26/11/2016 19:11:49	Heat-Flow probe	HF	station end	5° 29,244' S	148° 12,554' E	1320.9

Station	Date / Time UTC	Device	Device Abbreviation	Action	Latitude	Longitude	Depth (m)
SO252_23-8	26/11/2016 19:40:57	Heat-Flow probe	HF	station start	5° 29,633' S	148° 12,233' E	1299.3
SO252_23-8	26/11/2016 19:41:36	Heat-Flow probe	HF	lowering	5° 29,635' S	148° 12,231' E	1306.2
SO252_23-8	26/11/2016 19:47:12	Heat-Flow probe	HF	max depth/on ground	5° 29,634' S	148° 12,228' E	1301.2
SO252_23-8	26/11/2016 20:01:30	Heat-Flow probe	HF	hoisting	5° 29,635' S	148° 12,228' E	1299.1
SO252_23-8	26/11/2016 20:08:21	Heat-Flow probe	HF	station end	5° 29,634' S	148° 12,232' E	1300.4
SO252_23-9	26/11/2016 20:39:55	Heat-Flow probe	HF	station start	5° 29,968' S	148° 11,908' E	1285
SO252_23-9	26/11/2016 20:41:17	Heat-Flow probe	HF	lowering	5° 29,967' S	148° 11,908' E	1283.5
SO252_23-9	26/11/2016 20:45:07	Heat-Flow probe	HF	max depth/on ground	5° 29,965' S	148° 11,907' E	1284.3
SO252_23-9	26/11/2016 21:00:19	Heat-Flow probe	HF	hoisting	5° 29,967' S	148° 11,905' E	1284.6
SO252_23-9	26/11/2016 21:07:27	Heat-Flow probe	HF	station end	5° 29,969' S	148° 11,904' E	1283
SO252_23-10	26/11/2016 21:41:23	Heat-Flow probe	HF	station start	5° 30,368' S	148° 11,454' E	1245
SO252_23-10	26/11/2016 21:41:43	Heat-Flow probe	HF	lowering	5° 30,368' S	148° 11,454' E	1243.8
SO252_23-10	26/11/2016 21:44:09	Heat-Flow probe	HF	max depth/on ground	5° 30,369' S	148° 11,454' E	1244.3
SO252_23-10	26/11/2016 21:45:01	Heat-Flow probe	HF	hoisting	5° 30,370' S	148° 11,454' E	1245.2
SO252_23-10	26/11/2016 22:18:09	Heat-Flow probe	HF	on deck	5° 30,370' S	148° 11,457' E	1245.1
SO252_23-10	26/11/2016 22:20:56	Heat-Flow probe	HF	station end	5° 30,368' S	148° 11,459' E	1250.5
SO252_24-1	26/11/2016 22:30:22	Seismic Ocean Bottom Receiver	SEISOBR	station start	5° 30,496' S	148° 11,149' E	1234.2
SO252_24-1	26/11/2016 22:31:24	Seismic Ocean Bottom Receiver	SEISOBR	released	5° 30,536' S	148° 11,034' E	1233.7
SO252_24-1	26/11/2016 23:53:00	Seismic Ocean Bottom Receiver	SEISOBR	information	5° 31,073' S	148° 9,340' E	1122.8
SO252_24-1	27/11/2016 00:27:42	Seismic Ocean Bottom Receiver	SEISOBR	station end	5° 31,071' S	148° 9,339' E	1122
SO252_25-1	27/11/2016 00:54:56	HyBIS	HyBIS	station start	5° 31,073' S	148° 9,338' E	1122.1
SO252_25-1	27/11/2016 01:14:30	HyBIS	HyBIS	in the water	5° 31,070' S	148° 9,342' E	1122
SO252_25-1	27/11/2016 01:19:07	HyBIS	HyBIS	in the water	5° 31,072' S	148° 9,342' E	1121

Station	Date / Time UTC	Device	Device Abbreviation	Action	Latitude	Longitude	Depth (m)
SO252_25-1	27/11/2016 01:50:55	HyBIS	HyBIS	information	5° 31,071' S	148° 9,341' E	1123.5
SO252_25-1	27/11/2016 04:05:19	HyBIS	HyBIS	information	5° 31,064' S	148° 9,313' E	1119.1
SO252_25-1	27/11/2016 04:13:57	HyBIS	HyBIS	on deck	5° 31,060' S	148° 9,316' E	1119.3
SO252_25-1	27/11/2016 04:18:52	HyBIS	HyBIS	on deck	5° 31,060' S	148° 9,315' E	1118.5
SO252_25-1	27/11/2016 04:20:22	HyBIS	HyBIS	information	5° 31,060' S	148° 9,315' E	1119.9
SO252_25-1	27/11/2016 04:22:01	HyBIS	HyBIS	station end	5° 31,060' S	148° 9,316' E	1118
SO252_26-1	27/11/2016 04:29:45	KONGSBERG EM122	EM122	station start	5° 31,060' S	148° 9,072' E	1085.6
SO252_26-1	27/11/2016 05:02:27	KONGSBERG EM122	EM122	alter course	5° 32,236' S	148° 6,245' E	420.6
SO252_26-1	27/11/2016 05:11:33	KONGSBERG EM122	EM122	alter course	5° 31,611' S	148° 6,026' E	482.4
SO252_26-1	27/11/2016 05:22:13	KONGSBERG EM122	EM122	alter course	5° 30,644' S	148° 6,348' E	438.9
SO252_26-1	27/11/2016 05:40:40	KONGSBERG EM122	EM122	station end	5° 30,984' S	148° 6,506' E	260.3
SO252_27-1	27/11/2016 05:42:29	Drone	DRONE	station start	5° 30,981' S	148° 6,514' E	261.4
SO252_27-1	27/11/2016 05:45:00	Drone	DRONE	information	5° 30,995' S	148° 6,509' E	253.2
SO252_27-1	27/11/2016 06:00:13	Drone	DRONE	information	5° 30,997' S	148° 6,512' E	254.5
SO252_27-1	27/11/2016 06:02:31	Drone	DRONE	information	5° 30,996' S	148° 6,512' E	254.3
SO252_27-1	27/11/2016 06:18:02	Drone	DRONE	information	5° 30,997' S	148° 6,510' E	252.2
SO252_27-1	27/11/2016 06:19:47	Drone	DRONE	station end	5° 30,998' S	148° 6,510' E	252.9
SO252_28-1	27/11/2016 08:50:00	Seismic Towed Receiver	SEISTR	station start	5° 35,255' S	148° 9,178' E	767.2
SO252_28-1	27/11/2016 08:55:11	Seismic Towed Receiver	SEISTR	information	5° 35,120' S	148° 9,029' E	793.7
SO252_28-1	27/11/2016 08:57:24	Seismic Towed Receiver	SEISTR	information	5° 35,067' S	148° 8,973' E	787.3
SO252_28-1	27/11/2016 09:46:25	Seismic Towed Receiver	SEISTR	information	5° 34,165' S	148° 8,206' E	904.1
SO252_28-1	27/11/2016 09:51:30	Seismic Towed Receiver	SEISTR	information	5° 34,090' S	148° 8,131' E	908
SO252_28-1	27/11/2016 10:07:28	Seismic Towed Receiver	SEISTR	in the water	5° 33,808' S	148° 7,822' E	925.6

Station	Date / Time UTC	Device	Device Abbreviation	Action	Latitude	Longitude	Depth (m)
SO252_28-1	27/11/2016 10:18:53	Seismic Towed Receiver	SEISTR	information	5° 33,525' S	148° 7,562' E	923.3
SO252_28-1	27/11/2016 11:17:07	Seismic Towed Receiver	SEISTR	profile start	5° 31,561' S	148° 5,801' E	628.2
SO252_28-1	27/11/2016 13:33:42	Seismic Towed Receiver	SEISTR	alter course	5° 27,824' S	147° 59,800' E	1206.9
SO252_28-1	27/11/2016 13:52:55	Seismic Towed Receiver	SEISTR	alter course	5° 26,894' S	148° 0,103' E	1326.8
SO252_28-1	27/11/2016 15:57:51	Seismic Towed Receiver	SEISTR	alter course	5° 30,447' S	148° 6,235' E	489.1
SO252_28-1	27/11/2016 16:21:30	Seismic Towed Receiver	SEISTR	alter course	5° 31,339' S	148° 5,952' E	546.7
SO252_28-1	27/11/2016 19:02:04	Seismic Towed Receiver	SEISTR	alter course	5° 27,773' S	147° 59,789' E	1203.9
SO252_28-1	27/11/2016 19:21:21	Seismic Towed Receiver	SEISTR	alter course	5° 26,851' S	148° 0,132' E	1324.1
SO252_28-1	27/11/2016 21:24:10	Seismic Towed Receiver	SEISTR	alter course	5° 30,414' S	148° 6,256' E	469.4
SO252_28-1	27/11/2016 21:42:18	Seismic Towed Receiver	SEISTR	alter course	5° 31,416' S	148° 5,848' E	606.2
SO252_28-1	27/11/2016 23:43:11	Seismic Towed Receiver	SEISTR	alter course	5° 27,613' S	147° 59,739' E	1206.4
SO252_28-1	28/11/2016 00:00:40	Seismic Towed Receiver	SEISTR	alter course	5° 26,711' S	148° 0,266' E	1307
SO252_28-1	28/11/2016 00:34:45	Seismic Towed Receiver	SEISTR	information	5° 27,613' S	148° 1,838' E	961.4
SO252_28-1	28/11/2016 00:45:31	Seismic Towed Receiver	SEISTR	information	5° 27,892' S	148° 2,286' E	914.1
SO252_28-1	28/11/2016 00:50:29	Seismic Towed Receiver	SEISTR	on deck	5° 28,001' S	148° 2,463' E	982
SO252_28-1	28/11/2016 01:10:16	Seismic Towed Receiver	SEISTR	information	5° 28,403' S	148° 3,111' E	892.3
SO252_28-1	28/11/2016 01:12:05	Seismic Towed Receiver	SEISTR	on deck	5° 28,436' S	148° 3,165' E	900.9
SO252_28-1	28/11/2016 01:31:21	Seismic Towed Receiver	SEISTR	on deck	5° 28,860' S	148° 3,836' E	891.4
SO252_28-1	28/11/2016 01:39:26	Seismic Towed Receiver	SEISTR	alter course	5° 29,041' S	148° 4,137' E	888.1
SO252_28-1	28/11/2016 02:02:45	Seismic Towed Receiver	SEISTR	information	5° 29,450' S	148° 5,025' E	841.8
SO252_28-1	28/11/2016 02:15:45	Seismic Towed Receiver	SEISTR	information	5° 29,645' S	148° 5,468' E	780.9
SO252_28-1	28/11/2016 02:21:22	Seismic Towed Receiver	SEISTR	information	5° 29,716' S	148° 5,653' E	751.9
SO252_28-1	28/11/2016 02:29:33	Seismic Towed Receiver	SEISTR	information	5° 29,839' S	148° 5,932' E	682.6

Station	Date / Time UTC	Device	Device Abbreviation	Action	Latitude	Longitude	Depth (m)
SO252_28-1	28/11/2016 02:47:11	Seismic Towed Receiver	SEISTR	information	5° 30,072' S	148° 6,509' E	523.5
SO252_28-1	28/11/2016 03:03:13	Seismic Towed Receiver	SEISTR	PCable in water	5° 30,290' S	148° 7,179' E	557.7
SO252_28-1	28/11/2016 03:03:35	Seismic Towed Receiver	SEISTR	information	5° 30,296' S	148° 7,194' E	565.5
SO252_28-1	28/11/2016 03:05:12	Seismic Towed Receiver	SEISTR	information	5° 30,321' S	148° 7,263' E	586.2
SO252_28-1	28/11/2016 03:21:38	Seismic Towed Receiver	SEISTR	information	5° 30,614' S	148° 7,897' E	806.1
SO252_28-1	28/11/2016 03:25:41	Seismic Towed Receiver	SEISTR	information	5° 32,305' S	148° 6,467' E	448.4
SO252_28-1	28/11/2016 04:42:14	Seismic Towed Receiver	SEISTR	information	5° 31,491' S	148° 5,881' E	586.7
SO252_28-1	28/11/2016 07:03:27	Seismic Towed Receiver	SEISTR	alter course	5° 27,715' S	147° 59,842' E	1208.3
SO252_28-1	28/11/2016 07:22:29	Seismic Towed Receiver	SEISTR	alter course	5° 26,769' S	148° 0,175' E	1319
SO252_28-1	28/11/2016 09:27:25	Seismic Towed Receiver	SEISTR	alter course	5° 30,371' S	148° 6,325' E	422
SO252_28-1	28/11/2016 09:45:28	Seismic Towed Receiver	SEISTR	alter course	5° 31,258' S	148° 5,997' E	513.3
SO252_28-1	28/11/2016 11:57:48	Seismic Towed Receiver	SEISTR	alter course	5° 27,664' S	147° 59,836' E	1205.6
SO252_28-1	28/11/2016 12:15:17	Seismic Towed Receiver	SEISTR	alter course	5° 26,788' S	148° 0,168' E	1321
SO252_28-1	28/11/2016 14:19:12	Seismic Towed Receiver	SEISTR	alter course	5° 30,392' S	148° 6,401' E	365.5
SO252_28-1	28/11/2016 14:37:02	Seismic Towed Receiver	SEISTR	alter course	5° 31,256' S	148° 6,002' E	512.4
SO252_28-1	28/11/2016 17:11:02	Seismic Towed Receiver	SEISTR	alter course	5° 27,525' S	147° 59,795' E	1217.3
SO252_28-1	28/11/2016 17:27:42	Seismic Towed Receiver	SEISTR	alter course	5° 26,677' S	148° 0,246' E	1312.7
SO252_28-1	28/11/2016 19:28:02	Seismic Towed Receiver	SEISTR	alter course	5° 30,296' S	148° 6,355' E	391.1
SO252_28-1	28/11/2016 19:46:06	Seismic Towed Receiver	SEISTR	alter course	5° 31,215' S	148° 6,011' E	499.7
SO252_28-1	28/11/2016 21:51:09	Seismic Towed Receiver	SEISTR	alter course	5° 27,602' S	147° 59,879' E	1215
SO252_28-1	28/11/2016 22:09:04	Seismic Towed Receiver	SEISTR	alter course	5° 26,701' S	148° 0,210' E	1314.6
SO252_28-1	29/11/2016 00:26:51	Seismic Towed Receiver	SEISTR	alter course	5° 30,241' S	148° 6,327' E	388.9
SO252_28-1	29/11/2016 00:44:17	Seismic Towed Receiver	SEISTR	alter course	5° 31,125' S	148° 6,089' E	440.5

Station	Date / Time UTC	Device	Device Abbreviation	Action	Latitude	Longitude	Depth (m)
SO252_28-1	29/11/2016 02:55:00	Seismic Towed Receiver	SEISTR	alter course	5° 27,559' S	147° 59,883' E	1217.2
SO252_28-1	29/11/2016 03:17:36	Seismic Towed Receiver	SEISTR	alter course	5° 26,585' S	148° 0,317' E	1325.9
SO252_28-1	29/11/2016 05:28:12	Seismic Towed Receiver	SEISTR	alter course	5° 30,274' S	148° 6,438' E	357
SO252_28-1	29/11/2016 05:44:43	Seismic Towed Receiver	SEISTR	alter course	5° 31,128' S	148° 6,083' E	447.7
SO252_28-1	29/11/2016 08:00:00	Seismic Towed Receiver	SEISTR	alter course	5° 27,441' S	147° 59,741' E	1218
SO252_28-1	29/11/2016 10:52:01	Seismic Towed Receiver	SEISTR	alter course	5° 31,109' S	148° 5,794' E	633.7
SO252_28-1	29/11/2016 11:09:09	Seismic Towed Receiver	SEISTR	alter course	5° 31,955' S	148° 5,529' E	593
SO252_28-1	29/11/2016 13:13:18	Seismic Towed Receiver	SEISTR	alter course	5° 28,392' S	147° 59,355' E	996.8
SO252_28-1	29/11/2016 13:33:26	Seismic Towed Receiver	SEISTR	alter course	5° 27,425' S	147° 59,789' E	1223.6
SO252_28-1	29/11/2016 15:20:52	Seismic Towed Receiver	SEISTR	alter course	5° 31,152' S	148° 5,970' E	523.9
SO252_28-1	29/11/2016 15:32:49	Seismic Towed Receiver	SEISTR	alter course	5° 31,945' S	148° 5,499' E	615.5
SO252_28-1	29/11/2016 16:18:08	Seismic Towed Receiver	SEISTR	information	5° 30,508' S	148° 2,921' E	925.7
SO252_28-1	29/11/2016 17:39:02	Seismic Towed Receiver	SEISTR	information	5° 27,977' S	147° 59,051' E	1062.4
SO252_28-1	29/11/2016 17:42:43	Seismic Towed Receiver	SEISTR	information	5° 27,919' S	147° 58,978' E	1070.3
SO252_28-1	29/11/2016 17:43:21	Seismic Towed Receiver	SEISTR	information	5° 27,908' S	147° 58,965' E	1072.8
SO252_28-1	29/11/2016 18:04:22	Seismic Towed Receiver	SEISTR	information	5° 27,563' S	147° 58,593' E	1125.7
SO252_28-1	29/11/2016 18:05:17	Seismic Towed Receiver	SEISTR	information	5° 27,547' S	147° 58,574' E	1133.8
SO252_28-1	29/11/2016 18:51:53	Seismic Towed Receiver	SEISTR	information	5° 26,955' S	147° 57,460' E	1187.2
SO252_28-1	29/11/2016 19:15:36	Seismic Towed Receiver	SEISTR	information	5° 26,686' S	147° 56,951' E	1253.5
SO252_28-1	29/11/2016 19:23:28	Seismic Towed Receiver	SEISTR	information	5° 26,634' S	147° 56,819' E	1263.6
SO252_28-1	30/11/2016 22:00:23	Seismic Towed Receiver	SEISTR	information	5° 30,842' S	148° 4,013' E	904.2
SO252_28-1	30/11/2016 22:20:00	Seismic Towed Receiver	SEISTR	in the water	5° 30,480' S	148° 3,501' E	913.2
SO252_28-1	01/12/2016 00:04:12	Seismic Towed Receiver	SEISTR	in the water	5° 28,310' S	148° 0,248' E	838.6

Station	Date / Time UTC	Device	Device Abbreviation	Action	Latitude	Longitude	Depth (m)
SO252_28-1	01/12/2016 00:05:01	Seismic Towed Receiver	SEISTR	in the water	5° 28,299' S	148° 0,220' E	830.3
SO252_28-1	01/12/2016 00:23:41	Seismic Towed Receiver	SEISTR	in the water	5° 28,009' S	147° 59,471' E	1140.2
SO252_28-1	01/12/2016 00:28:07	Seismic Towed Receiver	SEISTR	information	5° 27,940' S	147° 59,283' E	1123
SO252_28-1	01/12/2016 00:34:22	Seismic Towed Receiver	SEISTR	alter course	5° 27,819' S	147° 58,938' E	1091
SO252_28-1	01/12/2016 00:44:03	Seismic Towed Receiver	SEISTR	information	5° 27,405' S	147° 58,846' E	1158.5
SO252_28-1	01/12/2016 00:53:54	Seismic Towed Receiver	SEISTR	alter course	5° 26,922' S	147° 59,167' E	1296.5
SO252_28-1	01/12/2016 00:57:23	Seismic Towed Receiver	SEISTR	in the water	5° 26,845' S	147° 59,312' E	1305
SO252_28-1	01/12/2016 01:11:08	Seismic Towed Receiver	SEISTR	profile start	5° 27,195' S	147° 59,958' E	1253.2
SO252_28-1	01/12/2016 03:15:18	Seismic Towed Receiver	SEISTR	alter course	5° 30,973' S	148° 5,904' E	598.7
SO252_28-1	01/12/2016 03:27:45	Seismic Towed Receiver	SEISTR	alter course	5° 31,514' S	148° 5,818' E	617.3
SO252_28-1	01/12/2016 05:42:35	Seismic Towed Receiver	SEISTR	alter course	5° 28,070' S	147° 59,464' E	1126.4
SO252_28-1	01/12/2016 06:01:12	Seismic Towed Receiver	SEISTR	alter course	5° 27,260' S	147° 59,872' E	1254.7
SO252_28-1	01/12/2016 08:09:46	Seismic Towed Receiver	SEISTR	alter course	5° 30,844' S	148° 5,957' E	591.9
SO252_28-1	01/12/2016 08:26:05	Seismic Towed Receiver	SEISTR	alter course	5° 31,577' S	148° 5,750' E	646.6
SO252_28-1	01/12/2016 10:31:55	Seismic Towed Receiver	SEISTR	alter course	5° 27,906' S	147° 59,586' E	1175.4
SO252_28-1	01/12/2016 10:46:48	Seismic Towed Receiver	SEISTR	alter course	5° 27,195' S	147° 59,915' E	1261.3
SO252_28-1	01/12/2016 13:01:17	Seismic Towed Receiver	SEISTR	alter course	5° 30,719' S	148° 6,025' E	587.2
SO252_28-1	01/12/2016 13:16:01	Seismic Towed Receiver	SEISTR	alter course	5° 31,427' S	148° 5,861' E	597.1
SO252_28-1	01/12/2016 15:22:36	Seismic Towed Receiver	SEISTR	alter course	5° 27,816' S	147° 59,722' E	1193.3
SO252_28-1	01/12/2016 15:41:06	Seismic Towed Receiver	SEISTR	alter course	5° 27,004' S	148° 0,050' E	1247.6
SO252_28-1	01/12/2016 17:55:01	Seismic Towed Receiver	SEISTR	alter course	5° 30,641' S	148° 6,181' E	538.7
SO252_28-1	01/12/2016 18:08:48	Seismic Towed Receiver	SEISTR	alter course	5° 31,268' S	148° 5,948' E	548.8
SO252_28-1	01/12/2016 20:14:44	Seismic Towed Receiver	SEISTR	alter course	5° 27,732' S	147° 59,731' E	1194.4

Station	Date / Time UTC	Device	Device Abbreviation	Action	Latitude	Longitude	Depth (m)
SO252_28-1	01/12/2016 20:31:21	Seismic Towed Receiver	SEISTR	alter course	5° 26,917' S	148° 0,101' E	1322.6
SO252_28-1	01/12/2016 22:51:16	Seismic Towed Receiver	SEISTR	alter course	5° 30,530' S	148° 6,301' E	460.3
SO252_28-1	01/12/2016 23:05:14	Seismic Towed Receiver	SEISTR	alter course	5° 31,107' S	148° 6,062' E	464.4
SO252_28-1	02/12/2016 01:05:57	Seismic Towed Receiver	SEISTR	alter course	5° 27,598' S	147° 59,958' E	1213.7
SO252_28-1	02/12/2016 01:21:49	Seismic Towed Receiver	SEISTR	alter course	5° 26,805' S	148° 0,152' E	1322.4
SO252_28-1	02/12/2016 03:47:02	Seismic Towed Receiver	SEISTR	alter course	5° 30,391' S	148° 6,282' E	450.9
SO252_28-1	02/12/2016 04:04:01	Seismic Towed Receiver	SEISTR	alter course	5° 31,187' S	148° 6,031' E	491.1
SO252_28-1	02/12/2016 04:15:04	Seismic Towed Receiver	SEISTR	information	5° 31,001' S	148° 5,559' E	705.4
SO252_28-1	02/12/2016 04:19:13	Seismic Towed Receiver	SEISTR	information	5° 30,933' S	148° 5,437' E	687.6
SO252_28-1	02/12/2016 04:23:21	Seismic Towed Receiver	SEISTR	information	5° 30,886' S	148° 5,355' E	612.6
SO252_28-1	02/12/2016 04:42:00	Seismic Towed Receiver	SEISTR	information	5° 30,618' S	148° 4,941' E	670.2
SO252_28-1	02/12/2016 04:48:56	Seismic Towed Receiver	SEISTR	information	5° 30,514' S	148° 4,797' E	712.7
SO252_28-1	02/12/2016 05:14:33	Seismic Towed Receiver	SEISTR	information	5° 30,142' S	148° 4,181' E	894.6
SO252_28-1	02/12/2016 05:56:51	Seismic Towed Receiver	SEISTR	information	5° 29,504' S	148° 3,105' E	957.9
SO252_28-1	02/12/2016 05:59:15	Seismic Towed Receiver	SEISTR	information	5° 29,465' S	148° 3,032' E	937.9
SO252_28-1	02/12/2016 06:16:29	Seismic Towed Receiver	SEISTR	information	5° 29,043' S	148° 2,344' E	962.9
SO252_28-1	02/12/2016 06:20:51	Seismic Towed Receiver	SEISTR	information	5° 28,935' S	148° 2,175' E	968.8
SO252_28-1	02/12/2016 07:04:39	Seismic Towed Receiver	SEISTR	alter course	5° 27,558' S	147° 59,943' E	1223.2
SO252_28-1	02/12/2016 07:22:51	Seismic Towed Receiver	SEISTR	alter course	5° 26,683' S	148° 0,227' E	1316.5
SO252_28-1	02/12/2016 09:44:19	Seismic Towed Receiver	SEISTR	alter course	5° 30,216' S	148° 6,396' E	403.9
SO252_28-1	02/12/2016 10:00:27	Seismic Towed Receiver	SEISTR	alter course	5° 31,015' S	148° 6,151' E	399.4
SO252_28-1	02/12/2016 12:03:19	Seismic Towed Receiver	SEISTR	alter course	5° 27,501' S	147° 59,936' E	1219.7
SO252_28-1	02/12/2016 12:18:30	Seismic Towed Receiver	SEISTR	alter course	5° 26,800' S	148° 0,146' E	1323.9

Station	Date / Time UTC	Device	Device Abbreviation	Action	Latitude	Longitude	Depth (m)
SO252_28-1	02/12/2016 14:36:37	Seismic Towed Receiver	SEISTR	alter course	5° 30,454' S	148° 6,404' E	372.2
SO252_28-1	02/12/2016 14:50:50	Seismic Towed Receiver	SEISTR	alter course	5° 31,245' S	148° 5,960' E	539.1
SO252_28-1	02/12/2016 17:00:00	Seismic Towed Receiver	SEISTR	alter course	5° 27,583' S	147° 59,772' E	1213.5
SO252_28-1	02/12/2016 17:15:14	Seismic Towed Receiver	SEISTR	alter course	5° 26,853' S	148° 0,119' E	1328
SO252_28-1	02/12/2016 19:35:28	Seismic Towed Receiver	SEISTR	alter course	5° 30,477' S	148° 6,237' E	493.4
SO252_28-1	02/12/2016 19:54:31	Seismic Towed Receiver	SEISTR	alter course	5° 31,428' S	148° 5,854' E	597.2
SO252_28-1	02/12/2016 21:52:20	Seismic Towed Receiver	SEISTR	alter course	5° 27,927' S	147° 59,586' E	1174
SO252_28-1	02/12/2016 22:12:10	Seismic Towed Receiver	SEISTR	alter course	5° 26,955' S	148° 0,039' E	1267.7
SO252_28-1	03/12/2016 00:34:13	Seismic Towed Receiver	SEISTR	alter course	5° 30,547' S	148° 6,137' E	557.1
SO252_28-1	03/12/2016 00:55:17	Seismic Towed Receiver	SEISTR	alter course	5° 31,572' S	148° 5,764' E	638.2
SO252_28-1	03/12/2016 02:42:21	Seismic Towed Receiver	SEISTR	alter course	5° 27,953' S	147° 59,487' E	1158
SO252_28-1	03/12/2016 03:02:07	Seismic Towed Receiver	SEISTR	alter course	5° 26,973' S	148° 0,038' E	1252.6
SO252_28-1	03/12/2016 05:30:00	Seismic Towed Receiver	SEISTR	alter course	5° 30,627' S	148° 6,156' E	552.9
SO252_28-1	03/12/2016 05:55:40	Seismic Towed Receiver	SEISTR	alter course	5° 31,858' S	148° 5,543' E	640.6
SO252_28-1	03/12/2016 07:42:29	Seismic Towed Receiver	SEISTR	alter course	5° 28,223' S	147° 59,428' E	1084.8
SO252_28-1	03/12/2016 08:04:22	Seismic Towed Receiver	SEISTR	alter course	5° 27,176' S	147° 59,906' E	1262.4
SO252_28-1	03/12/2016 10:34:30	Seismic Towed Receiver	SEISTR	alter course	5° 30,726' S	148° 6,052' E	571.5
SO252_28-1	03/12/2016 11:00:31	Seismic Towed Receiver	SEISTR	alter course	5° 31,817' S	148° 5,588' E	632.9
SO252_28-1	03/12/2016 12:46:54	Seismic Towed Receiver	SEISTR	alter course	5° 28,233' S	147° 59,303' E	1046.3
SO252_28-1	03/12/2016 13:06:17	Seismic Towed Receiver	SEISTR	alter course	5° 27,316' S	147° 59,799' E	1237.5
SO252_28-1	03/12/2016 15:40:28	Seismic Towed Receiver	SEISTR	alter course	5° 30,927' S	148° 6,024' E	522.3
SO252_28-1	03/12/2016 16:00:49	Seismic Towed Receiver	SEISTR	alter course	5° 32,011' S	148° 5,449' E	593.3
SO252_28-1	03/12/2016 17:51:14	Seismic Towed Receiver	SEISTR	alter course	5° 28,295' S	147° 59,259' E	1028.8

Station	Date / Time UTC	Device	Device Abbreviation	Action	Latitude	Longitude	Depth (m)
SO252_28-1	03/12/2016 18:09:49	Seismic Towed Receiver	SEISTR	alter course	5° 27,455' S	147° 59,699' E	1216.2
SO252_28-1	03/12/2016 20:33:00	Seismic Towed Receiver	SEISTR	alter course	5° 31,068' S	148° 5,849' E	608.7
SO252_28-1	03/12/2016 20:54:02	Seismic Towed Receiver	SEISTR	alter course	5° 27,675' S	147° 59,697' E	1077.2
SO252_28-1	03/12/2016 22:20:16	Seismic Towed Receiver	SEISTR	information	5° 29,074' S	148° 0,438' E	1052.6
SO252_28-1	03/12/2016 22:29:01	Seismic Towed Receiver	SEISTR	on deck	5° 28,809' S	148° 0,009' E	880.4
SO252_28-1	03/12/2016 22:43:22	Seismic Towed Receiver	SEISTR	in the water	5° 28,406' S	147° 59,361' E	991.9
SO252_28-1	03/12/2016 22:46:03	Seismic Towed Receiver	SEISTR	information	5° 28,328' S	147° 59,243' E	1016.6
SO252_28-1	03/12/2016 22:49:20	Seismic Towed Receiver	SEISTR	alter course	5° 28,209' S	147° 59,066' E	1028.8
SO252_28-1	03/12/2016 23:19:48	Seismic Towed Receiver	SEISTR	alter course	5° 26,836' S	147° 59,512' E	1290
SO252_28-1	04/12/2016 02:09:25	Seismic Towed Receiver	SEISTR	alter course	5° 30,650' S	148° 6,147' E	552.4
SO252_28-1	04/12/2016 02:40:48	Seismic Towed Receiver	SEISTR	alter course	5° 32,060' S	148° 5,492' E	587.3
SO252_28-1	04/12/2016 04:22:17	Seismic Towed Receiver	SEISTR	alter course	5° 28,356' S	147° 59,269' E	1012.3
SO252_28-1	04/12/2016 04:42:00	Seismic Towed Receiver	SEISTR	alter course	5° 27,438' S	147° 59,712' E	1218.9
SO252_28-1	04/12/2016 07:21:03	Seismic Towed Receiver	SEISTR	alter course	5° 31,023' S	148° 5,881' E	592.9
SO252_28-1	04/12/2016 07:44:40	Seismic Towed Receiver	SEISTR	alter course	5° 32,071' S	148° 5,473' E	597.1
SO252_28-1	04/12/2016 09:27:25	Seismic Towed Receiver	SEISTR	alter course	5° 28,421' S	147° 59,277' E	994
SO252_28-1	04/12/2016 09:44:48	Seismic Towed Receiver	SEISTR	alter course	5° 27,546' S	147° 59,646' E	1208.6
SO252_28-1	04/12/2016 12:45:37	Seismic Towed Receiver	SEISTR	alter course	5° 31,066' S	148° 5,812' E	629.6
SO252_28-1	04/12/2016 13:08:11	Seismic Towed Receiver	SEISTR	alter course	5° 32,013' S	148° 5,506' E	567.6
SO252_28-1	04/12/2016 14:50:20	Seismic Towed Receiver	SEISTR	alter course	5° 28,417' S	147° 59,302' E	990.5
SO252_28-1	04/12/2016 15:32:11	Seismic Towed Receiver	SEISTR	alter course	5° 26,538' S	148° 0,312' E	1324
SO252_28-1	04/12/2016 18:15:39	Seismic Towed Receiver	SEISTR	alter course	5° 30,187' S	148° 6,391' E	431
SO252_28-1	04/12/2016 18:55:02	Seismic Towed Receiver	SEISTR	alter course	5° 32,075' S	148° 5,485' E	592

Station	Date / Time UTC	Device	Device Abbreviation	Action	Latitude	Longitude	Depth (m)
SO252_28-1	04/12/2016 20:39:01	Seismic Towed Receiver	SEISTR	alter course	5° 28,482' S	147° 59,325' E	963.4
SO252_28-1	04/12/2016 21:17:39	Seismic Towed Receiver	SEISTR	alter course	5° 26,585' S	148° 0,268' E	1333
SO252_28-1	05/12/2016 00:00:02	Seismic Towed Receiver	SEISTR	alter course	5° 30,131' S	148° 6,372' E	472.1
SO252_28-1	05/12/2016 00:22:34	Seismic Towed Receiver	SEISTR	alter course	5° 31,076' S	148° 6,087' E	439
SO252_28-1	05/12/2016 02:08:41	Seismic Towed Receiver	SEISTR	alter course	5° 27,277' S	147° 59,687' E	1252.6
SO252_28-1	05/12/2016 02:37:07	Seismic Towed Receiver	SEISTR	alter course	5° 26,801' S	148° 0,080' E	1334.7
SO252_28-1	05/12/2016 05:21:30	Seismic Towed Receiver	SEISTR	information	5° 30,352' S	148° 5,884' E	660.9
SO252_28-1	05/12/2016 05:23:12	Seismic Towed Receiver	SEISTR	information	5° 30,381' S	148° 5,941' E	644.1
SO252_28-1	05/12/2016 05:27:58	Seismic Towed Receiver	SEISTR	information	5° 30,437' S	148° 6,035' E	606.5
SO252_28-1	05/12/2016 05:28:51	Seismic Towed Receiver	SEISTR	information	5° 30,465' S	148° 6,051' E	602.7
SO252_28-1	05/12/2016 05:45:33	Seismic Towed Receiver	SEISTR	information	5° 31,059' S	148° 5,972' E	530.8
SO252_28-1	05/12/2016 05:47:01	Seismic Towed Receiver	SEISTR	information	5° 31,107' S	148° 5,958' E	538.3
SO252_28-1	05/12/2016 05:51:46	Seismic Towed Receiver	SEISTR	information	5° 31,241' S	148° 5,892' E	579.5
SO252_28-1	05/12/2016 06:17:29	Seismic Towed Receiver	SEISTR	on deck	5° 31,925' S	148° 5,664' E	533.4
SO252_28-1	05/12/2016 06:21:55	Seismic Towed Receiver	SEISTR	on deck	5° 32,040' S	148° 5,626' E	492.2
SO252_28-1	05/12/2016 06:23:19	Seismic Towed Receiver	SEISTR	station end	5° 32,077' S	148° 5,617' E	488.7
SO252_29-1	29/11/2016 20:55:00	KONGSBERG EM122	EM122	station start	5° 28,543' S	148° 9,657' E	1216.6
SO252_29-1	29/11/2016 20:55:04	KONGSBERG EM122	EM122	profile start	5° 28,535' S	148° 9,663' E	1216.6
SO252_29-1	29/11/2016 21:31:38	KONGSBERG EM122	EM122	alter course	5° 24,168' S	148° 12,022' E	1381.8
SO252_29-1	29/11/2016 21:42:45	KONGSBERG EM122	EM122	alter course	5° 24,864' S	148° 13,124' E	1395
SO252_29-1	29/11/2016 22:20:35	KONGSBERG EM122	EM122	profile end	5° 29,049' S	148° 10,577' E	1262.1
SO252_29-1	29/11/2016 22:21:08	KONGSBERG EM122	EM122	station end	5° 29,102' S	148° 10,538' E	1257.4
SO252_30-1	29/11/2016 23:20:15	OFOS	OFOS	station start	5° 29,926' S	148° 3,543' E	734.4

Station	Date / Time UTC	Device	Device Abbreviation	Action	Latitude	Longitude	Depth (m)
SO252_30-1	29/11/2016 23:23:23	OFOS	OFOS	in the water	5° 29,915' S	148° 3,544' E	730.7
SO252_30-1	29/11/2016 23:54:11	OFOS	OFOS	information	5° 29,917' S	148° 3,541' E	736.5
SO252_30-1	30/11/2016 00:28:19	OFOS	OFOS	alter course	5° 29,901' S	148° 3,492' E	758.2
SO252_30-1	30/11/2016 01:16:15	OFOS	OFOS	hoisting	5° 29,957' S	148° 3,523' E	757.5
SO252_30-1	30/11/2016 01:39:33	OFOS	OFOS	on deck	5° 29,959' S	148° 3,525' E	758.2
SO252_30-1	30/11/2016 01:44:23	OFOS	OFOS	station end	5° 29,954' S	148° 3,527' E	758.2
SO252_30-1	30/11/2016 01:44:56	OFOS	OFOS	station end	5° 29,954' S	148° 3,527' E	755.4
SO252_30-1	30/11/2016 01:44:59	OFOS	OFOS	station end	5° 29,954' S	148° 3,526' E	754.6
SO252_31-1	30/11/2016 02:47:09	OFOS	OFOS	station start	5° 30,473' S	148° 6,583' E	215.2
SO252_31-1	30/11/2016 02:48:40	OFOS	OFOS	in the water	5° 30,481' S	148° 6,578' E	213.4
SO252_31-1	30/11/2016 03:00:00	OFOS	OFOS	max depth/on ground	5° 30,480' S	148° 6,580' E	214.8
SO252_31-1	30/11/2016 06:23:07	OFOS	OFOS	information	5° 31,099' S	148° 6,155' E	393.5
SO252_31-1	30/11/2016 06:44:19	OFOS	OFOS	hoisting	5° 31,178' S	148° 6,216' E	340.9
SO252_31-1	30/11/2016 06:56:39	OFOS	OFOS	on deck	5° 31,177' S	148° 6,210' E	343.8
SO252_31-1	30/11/2016 07:00:03	OFOS	OFOS	station end	5° 31,180' S	148° 6,210' E	345.8
SO252_32-1	30/11/2016 08:00:00	OFOS	OFOS	station start	5° 30,943' S	148° 2,431' E	926.6
SO252_32-1	30/11/2016 08:07:15	OFOS	OFOS	in the water	5° 30,926' S	148° 2,403' E	937.4
SO252_32-1	30/11/2016 08:33:44	OFOS	OFOS	information	5° 30,924' S	148° 2,401' E	936.8
SO252_32-1	30/11/2016 10:30:46	OFOS	OFOS	profile end	5° 31,176' S	148° 2,001' E	820.5
SO252_32-1	30/11/2016 10:31:13	OFOS	OFOS	hoisting	5° 31,175' S	148° 2,002' E	820.1
SO252_32-1	30/11/2016 10:55:50	OFOS	OFOS	on deck	5° 31,173' S	148° 2,003' E	822.8
SO252_32-1	30/11/2016 11:00:10	OFOS	OFOS	station end	5° 31,175' S	148° 2,000' E	820.8
SO252_33-1	30/11/2016 11:45:15	Heat-Flow probe	HF	station start	5° 31,131' S	148° 4,856' E	791.6

Station	Date / Time UTC	Device	Device Abbreviation	Action	Latitude	Longitude	Depth (m)
SO252_33-1	30/11/2016 12:18:18	Heat-Flow probe	HF	in the water	5° 31,123' S	148° 4,837' E	791.2
SO252_33-1	30/11/2016 12:28:03	Heat-Flow probe	HF	in the water	5° 31,126' S	148° 4,835' E	792.2
SO252_33-1	30/11/2016 12:50:08	Heat-Flow probe	HF	max depth/on ground	5° 31,128' S	148° 4,835' E	793.1
SO252_33-1	30/11/2016 12:52:38	Heat-Flow probe	HF	hoisting	5° 31,129' S	148° 4,834' E	792.2
SO252_33-1	30/11/2016 12:54:09	Heat-Flow probe	HF	information	5° 31,129' S	148° 4,834' E	794.2
SO252_33-2	30/11/2016 13:12:57	Heat-Flow probe	HF	lowering	5° 31,209' S	148° 4,691' E	822.8
SO252_33-2	30/11/2016 13:16:31	Heat-Flow probe	HF	max depth/on ground	5° 31,208' S	148° 4,691' E	825.2
SO252_33-2	30/11/2016 13:32:17	Heat-Flow probe	HF	hoisting	5° 31,205' S	148° 4,692' E	823.1
SO252_33-2	30/11/2016 13:38:55	Heat-Flow probe	HF	information	5° 31,209' S	148° 4,685' E	822.3
SO252_33-3	30/11/2016 13:52:58	Heat-Flow probe	HF	lowering	5° 31,288' S	148° 4,590' E	833.7
SO252_33-3	30/11/2016 13:55:50	Heat-Flow probe	HF	max depth/on ground	5° 31,289' S	148° 4,590' E	835.2
SO252_33-3	30/11/2016 13:56:23	Heat-Flow probe	HF	hoisting	5° 31,289' S	148° 4,590' E	833.3
SO252_33-3	30/11/2016 13:58:10	Heat-Flow probe	HF	information	5° 31,289' S	148° 4,590' E	833.5
SO252_33-4	30/11/2016 14:20:04	Heat-Flow probe	HF	lowering	5° 31,352' S	148° 4,465' E	849
SO252_33-4	30/11/2016 14:23:32	Heat-Flow probe	HF	max depth/on ground	5° 31,352' S	148° 4,465' E	847.7
SO252_33-4	30/11/2016 14:24:05	Heat-Flow probe	HF	hoisting	5° 31,352' S	148° 4,465' E	848.2
SO252_33-4	30/11/2016 14:28:35	Heat-Flow probe	HF	information	5° 31,352' S	148° 4,465' E	847.1
SO252_33-5	30/11/2016 14:47:15	Heat-Flow probe	HF	lowering	5° 31,414' S	148° 4,364' E	854.9
SO252_33-5	30/11/2016 14:50:15	Heat-Flow probe	HF	max depth/on ground	5° 31,415' S	148° 4,364' E	855.6
SO252_33-5	30/11/2016 14:50:54	Heat-Flow probe	HF	hoisting	5° 31,416' S	148° 4,364' E	855
SO252_33-5	30/11/2016 14:55:33	Heat-Flow probe	HF	information	5° 31,415' S	148° 4,364' E	855.2
SO252_33-6	30/11/2016 15:15:09	Heat-Flow probe	HF	lowering	5° 31,494' S	148° 4,214' E	869.5
SO252_33-6	30/11/2016 15:18:33	Heat-Flow probe	HF	max depth/on ground	5° 31,497' S	148° 4,214' E	869.6

Station	Date / Time UTC	Device	Device Abbreviation	Action	Latitude	Longitude	Depth (m)
SO252_33-6	30/11/2016 15:18:41	Heat-Flow probe	HF	hoisting	5° 31,497' S	148° 4,214' E	869.4
SO252_33-6	30/11/2016 15:24:25	Heat-Flow probe	HF	information	5° 31,496' S	148° 4,214' E	869.5
SO252_33-7	30/11/2016 15:44:33	Heat-Flow probe	HF	lowering	5° 31,562' S	148° 4,019' E	883
SO252_33-7	30/11/2016 15:48:20	Heat-Flow probe	HF	max depth/on ground	5° 31,565' S	148° 4,017' E	884
SO252_33-7	30/11/2016 16:03:08	Heat-Flow probe	HF	hoisting	5° 31,564' S	148° 4,017' E	884.4
SO252_33-7	30/11/2016 16:24:03	Heat-Flow probe	HF	information	5° 31,562' S	148° 4,019' E	883.1
SO252_33-7	30/11/2016 16:29:44	Heat-Flow probe	HF	information	5° 31,562' S	148° 4,019' E	883
SO252_33-7	30/11/2016 16:30:03	Heat-Flow probe	HF	information	5° 31,562' S	148° 4,019' E	882.7
SO252_33-8	30/11/2016 17:30:36	Heat-Flow probe	HF	in the water	5° 30,223' S	148° 4,543' E	800.2
SO252_33-8	30/11/2016 17:34:44	Heat-Flow probe	HF	information	5° 30,220' S	148° 4,539' E	800.9
SO252_33-8	30/11/2016 17:35:10	Heat-Flow probe	HF	lowering	5° 30,220' S	148° 4,539' E	800.3
SO252_33-8	30/11/2016 17:48:35	Heat-Flow probe	HF	max depth/on ground	5° 30,224' S	148° 4,539' E	799.8
SO252_33-8	30/11/2016 17:49:02	Heat-Flow probe	HF	hoisting	5° 30,224' S	148° 4,539' E	798.8
SO252_33-8	30/11/2016 17:54:16	Heat-Flow probe	HF	information	5° 30,224' S	148° 4,539' E	799.4
SO252_33-9	30/11/2016 18:12:12	Heat-Flow probe	HF	lowering	5° 30,340' S	148° 4,443' E	792.4
SO252_33-9	30/11/2016 18:16:33	Heat-Flow probe	HF	max depth/on ground	5° 30,340' S	148° 4,443' E	791.7
SO252_33-9	30/11/2016 18:32:03	Heat-Flow probe	HF	hoisting	5° 30,339' S	148° 4,446' E	790.7
SO252_33-9	30/11/2016 18:37:02	Heat-Flow probe	HF	information	5° 30,339' S	148° 4,446' E	791.1
SO252_33-10	30/11/2016 18:59:20	Heat-Flow probe	HF	lowering	5° 30,454' S	148° 4,321' E	797.3
SO252_33-10	30/11/2016 19:01:47	Heat-Flow probe	HF	max depth/on ground	5° 30,456' S	148° 4,322' E	802.1
SO252_33-10	30/11/2016 19:18:16	Heat-Flow probe	HF	hoisting	5° 30,453' S	148° 4,329' E	801
SO252_33-10	30/11/2016 19:22:18	Heat-Flow probe	HF	information	5° 30,453' S	148° 4,328' E	804.6
SO252_33-11	30/11/2016 19:42:16	Heat-Flow probe	HF	lowering	5° 30,607' S	148° 4,210' E	833.1

Station	Date / Time UTC	Device	Device Abbreviation	Action	Latitude	Longitude	Depth (m)
SO252_33-11	30/11/2016 19:45:12	Heat-Flow probe	HF	max depth/on ground	5° 30,607' S	148° 4,208' E	834.3
SO252_33-11	30/11/2016 19:45:24	Heat-Flow probe	HF	hoisting	5° 30,607' S	148° 4,208' E	834.6
SO252_33-11	30/11/2016 19:50:55	Heat-Flow probe	HF	information	5° 30,611' S	148° 4,209' E	834.5
SO252_33-12	30/11/2016 20:07:31	Heat-Flow probe	HF	lowering	5° 30,711' S	148° 4,122' E	862.2
SO252_33-12	30/11/2016 20:10:37	Heat-Flow probe	HF	max depth/on ground	5° 30,710' S	148° 4,122' E	861.7
SO252_33-12	30/11/2016 20:11:21	Heat-Flow probe	HF	hoisting	5° 30,710' S	148° 4,122' E	862.1
SO252_33-12	30/11/2016 20:17:43	Heat-Flow probe	HF	information	5° 30,711' S	148° 4,126' E	857.2
SO252_33-13	30/11/2016 20:43:41	Heat-Flow probe	HF	lowering	5° 30,839' S	148° 4,012' E	903.8
SO252_33-13	30/11/2016 20:47:23	Heat-Flow probe	HF	max depth/on ground	5° 30,839' S	148° 4,014' E	903.6
SO252_33-13	30/11/2016 20:48:15	Heat-Flow probe	HF	hoisting	5° 30,840' S	148° 4,014' E	903.9
SO252_33-13	30/11/2016 21:08:52	Heat-Flow probe	HF	information	5° 30,836' S	148° 4,018' E	903.8
SO252_33-13	30/11/2016 21:18:38	Heat-Flow probe	HF	on deck	5° 30,836' S	148° 4,017' E	904
SO252_33-13	30/11/2016 21:24:12	Heat-Flow probe	HF	station end	5° 30,837' S	148° 4,013' E	904
SO252_34-1	05/12/2016 06:23:29	Seismic Towed Receiver	SEISTR	station start	5° 32,082' S	148° 5,616' E	489.9
SO252_34-1	05/12/2016 07:09:08	Seismic Towed Receiver	SEISTR	PCable in water	5° 33,315' S	148° 5,693' E	796.3
SO252_34-1	05/12/2016 07:15:02	Seismic Towed Receiver	SEISTR	in the water	5° 33,471' S	148° 5,733' E	804
SO252_34-1	05/12/2016 07:25:58	Seismic Towed Receiver	SEISTR	profile start	5° 33,773' S	148° 5,834' E	825
SO252_34-1	05/12/2016 08:01:33	Seismic Towed Receiver	SEISTR	profile end	5° 35,227' S	148° 6,569' E	433.6
SO252_34-1	05/12/2016 08:08:53	Seismic Towed Receiver	SEISTR	on deck	5° 35,480' S	148° 6,697' E	406.5
SO252_34-1	05/12/2016 08:16:10	Seismic Towed Receiver	SEISTR	on deck	5° 35,634' S	148° 6,779' E	433.4
SO252_34-1	05/12/2016 08:18:05	Seismic Towed Receiver	SEISTR	station end	5° 35,672' S	148° 6,799' E	431.5
SO252_35-1	05/12/2016 10:36:26	KONGSBERG EM122	EM122	station start	5° 18,981' S	147° 48,622' E	1594.6
SO252_35-1	05/12/2016 10:49:04	KONGSBERG EM122	EM122	profile start	5° 18,225' S	147° 49,452' E	1772.1

Station	Date / Time UTC	Device	Device Abbreviation	Action	Latitude	Longitude	Depth (m)
SO252_35-1	05/12/2016 12:40:05	KONGSBERG EM122	EM122	alter course	5° 13,951' S	148° 1,731' E	1781
SO252_35-1	05/12/2016 13:00:01	KONGSBERG EM122	EM122	alter course	5° 11,755' S	148° 1,253' E	1786.2
SO252_35-1	05/12/2016 14:57:00	KONGSBERG EM122	EM122	alter course	5° 16,151' S	147° 48,523' E	1691.9
SO252_35-1	05/12/2016 15:35:00	KONGSBERG EM122	EM122	alter course	5° 12,110' S	147° 46,955' E	1782.7
SO252_35-1	05/12/2016 17:29:00	KONGSBERG EM122	EM122	alter course	5° 7,807' S	147° 59,490' E	1799.2
SO252_35-1	05/12/2016 17:43:06	KONGSBERG EM122	EM122	alter course	5° 9,687' S	147° 45,927' E	1790.7
SO252_35-1	05/12/2016 17:43:06	KONGSBERG EM122	EM122	alter course	5° 6,224' S	147° 59,130' E	1801.3
SO252_35-1	05/12/2016 19:39:57	KONGSBERG EM122	EM122	profile end	5° 9,691' S	147° 45,914' E	1789.8
SO252_35-1	05/12/2016 19:40:03	KONGSBERG EM122	EM122	station end	5° 9,694' S	147° 45,902' E	1792.7
SO252_36-1	05/12/2016 22:50:52	HyBIS	HyBIS	station start	5° 30,969' S	148° 6,379' E	287.6
SO252_36-1	05/12/2016 23:18:59	HyBIS	HyBIS	in the water	5° 30,986' S	148° 6,389' E	277.4
SO252_36-1	05/12/2016 23:37:48	HyBIS	HyBIS	max depth/on ground	5° 30,988' S	148° 6,388' E	278.7
SO252_36-1	05/12/2016 23:39:40	HyBIS	HyBIS	profile start	5° 30,988' S	148° 6,387' E	279.7
SO252_36-1	06/12/2016 00:17:33	HyBIS	HyBIS	profile end	5° 31,040' S	148° 6,398' E	245
SO252_36-1	06/12/2016 00:18:42	HyBIS	HyBIS	hoisting	5° 31,040' S	148° 6,398' E	245
SO252_36-1	06/12/2016 00:26:52	HyBIS	HyBIS	on deck	5° 31,040' S	148° 6,396' E	246.6
SO252_36-1	06/12/2016 00:31:17	HyBIS	HyBIS	on deck	5° 31,040' S	148° 6,395' E	247.4
SO252_36-2	06/12/2016 00:56:46	HyBIS	HyBIS	in the water	5° 31,036' S	148° 6,398' E	246.9
SO252_36-2	06/12/2016 01:00:38	HyBIS	HyBIS	in the water	5° 31,036' S	148° 6,399' E	246.1
SO252_36-2	06/12/2016 01:12:39	HyBIS	HyBIS	max depth/on ground	5° 31,037' S	148° 6,393' E	250.5
SO252_36-2	06/12/2016 01:17:19	HyBIS	HyBIS	profile start	5° 31,040' S	148° 6,391' E	247.9
SO252_36-2	06/12/2016 01:25:36	HyBIS	HyBIS	information	5° 31,050' S	148° 6,391' E	243.7
SO252_36-2	06/12/2016 01:26:45	HyBIS	HyBIS	hoisting	5° 31,051' S	148° 6,392' E	242.1

Station	Date / Time UTC	Device	Device Abbreviation	Action	Latitude	Longitude	Depth (m)
SO252_36-2	06/12/2016 01:36:00	HyBIS	HyBIS	on deck	5° 31,053' S	148° 6,391' E	236
SO252_36-2	06/12/2016 01:39:28	HyBIS	HyBIS	on deck	5° 31,052' S	148° 6,390' E	241.2
SO252_36-2	06/12/2016 01:44:00	HyBIS	HyBIS	station end	5° 31,050' S	148° 6,392' E	239.2
SO252_37-1	06/12/2016 02:07:04	HyBIS	HyBIS	station start	5° 30,701' S	148° 6,446' E	345.4
SO252_37-1	06/12/2016 02:16:32	HyBIS	HyBIS	in the water	5° 30,702' S	148° 6,443' E	364.2
SO252_37-1	06/12/2016 02:19:33	HyBIS	HyBIS	information	5° 30,702' S	148° 6,447' E	358.2
SO252_37-1	06/12/2016 02:31:33	HyBIS	HyBIS	max depth/on ground	5° 30,705' S	148° 6,449' E	355.9
SO252_37-1	06/12/2016 02:44:54	HyBIS	HyBIS	information	5° 30,706' S	148° 6,446' E	362.2
SO252_37-1	06/12/2016 02:55:39	HyBIS	HyBIS	information	5° 30,708' S	148° 6,441' E	365.9
SO252_37-1	06/12/2016 02:58:37	HyBIS	HyBIS	on deck	5° 30,706' S	148° 6,438' E	367.2
SO252_37-1	06/12/2016 03:00:05	HyBIS	HyBIS	station end	5° 30,705' S	148° 6,438' E	368.3
SO252_38-1	06/12/2016 03:54:54	HyBIS	HyBIS	station start	5° 28,979' S	148° 3,379' E	926.4
SO252_38-1	06/12/2016 03:56:14	HyBIS	HyBIS	in the water	5° 28,981' S	148° 3,382' E	926.2
SO252_38-1	06/12/2016 03:58:54	HyBIS	HyBIS	information	5° 28,983' S	148° 3,384' E	927.5
SO252_38-1	06/12/2016 04:20:14	HyBIS	HyBIS	max depth/on ground	5° 28,983' S	148° 3,386' E	928.8
SO252_38-1	06/12/2016 04:47:11	HyBIS	HyBIS	hoisting	5° 28,995' S	148° 3,379' E	928
SO252_38-1	06/12/2016 05:46:00	HyBIS	HyBIS	information	5° 28,990' S	148° 3,386' E	926.9
SO252_38-1	06/12/2016 05:48:19	HyBIS	HyBIS	on deck	5° 28,991' S	148° 3,386' E	927
SO252_38-1	06/12/2016 05:49:11	HyBIS	HyBIS	station end	5° 28,991' S	148° 3,386' E	928.4
SO252_39-1	06/12/2016 07:07:00	KONGSBERG EM122	EM122	station start	5° 29,882' S	148° 5,226' E	817.4
SO252_39-1	06/12/2016 07:07:06	KONGSBERG EM122	EM122	profile start	5° 29,879' S	148° 5,237' E	816.2
SO252_39-1	06/12/2016 08:23:31	KONGSBERG EM122	EM122	alter course	5° 28,653' S	148° 14,063' E	1340.9
SO252_39-1	06/12/2016 08:58:21	KONGSBERG EM122	EM122	alter course	5° 24,727' S	148° 14,650' E	1478.2

Station	Date / Time UTC	Device	Device Abbreviation	Action	Latitude	Longitude	Depth (m)
SO252_39-1	06/12/2016 10:00:03	KONGSBERG EM122	EM122	alter course	5° 19,018' S	148° 10,245' E	1422.3
SO252_39-1	06/12/2016 10:27:20	KONGSBERG EM122	EM122	alter course	5° 16,472' S	148° 8,315' E	1676.1
SO252_39-1	06/12/2016 11:57:21	KONGSBERG EM122	EM122	alter course	5° 10,883' S	147° 59,411' E	1794.2
SO252_39-1	06/12/2016 13:53:52	KONGSBERG EM122	EM122	alter course	4° 59,377' S	147° 52,138' E	1836.4
SO252_39-1	06/12/2016 14:39:06	KONGSBERG EM122	EM122	alter course	4° 55,543' S	147° 55,600' E	1825.2
SO252_39-1	06/12/2016 16:00:00	KONGSBERG EM122	EM122	alter course	4° 51,329' S	147° 47,940' E	939.9
SO252_39-1	06/12/2016 16:36:15	KONGSBERG EM122	EM122	alter course	4° 51,975' S	147° 43,733' E	1566.1
SO252_39-1	06/12/2016 17:49:42	KONGSBERG EM122	EM122	alter course	4° 59,531' S	147° 39,712' E	1832.9
SO252_39-1	06/12/2016 18:25:01	KONGSBERG EM122	EM122	alter course	5° 3,538' S	147° 40,717' E	1765.8
SO252_39-1	06/12/2016 20:09:24	KONGSBERG EM122	EM122	alter course	5° 13,827' S	147° 47,243' E	1776.9
SO252_39-1	06/12/2016 23:47:04	KONGSBERG EM122	EM122	profile end	5° 30,787' S	148° 4,864' E	656.5
SO252_39-1	06/12/2016 23:48:01	KONGSBERG EM122	EM122	station end	5° 30,788' S	148° 4,863' E	661
SO252_40-1	07/12/2016 03:56:36	OFOS	OFOS	station start	5° 30,866' S	148° 5,403' E	675.6
SO252_40-1	07/12/2016 03:58:48	OFOS	OFOS	in the water	5° 30,866' S	148° 5,404' E	675
SO252_40-1	07/12/2016 04:21:43	OFOS	OFOS	max depth/on ground	5° 30,863' S	148° 5,399' E	667.7
SO252_40-1	07/12/2016 08:08:29	OFOS	OFOS	hoisting	5° 31,186' S	148° 4,292' E	827.9
SO252_40-1	07/12/2016 08:30:02	OFOS	OFOS	on deck	5° 31,184' S	148° 4,293' E	829.8
SO252_40-1	07/12/2016 08:36:24	OFOS	OFOS	station end	5° 31,179' S	148° 4,289' E	837.1
SO252_41-1	07/12/2016 09:45:04	KONGSBERG EM122	EM122	station start	5° 28,421' S	148° 13,205' E	1367.2
SO252_41-1	07/12/2016 09:45:12	KONGSBERG EM122	EM122	profile start	5° 28,405' S	148° 13,211' E	1367.5
SO252_41-1	07/12/2016 11:20:07	KONGSBERG EM122	EM122	alter course	5° 19,608' S	148° 9,221' E	1505.2
SO252_41-1	07/12/2016 12:06:07	KONGSBERG EM122	EM122	alter course	5° 16,651' S	148° 5,691' E	1702.9
SO252_41-1	07/12/2016 14:54:43	KONGSBERG EM122	EM122	alter course	5° 1,178' S	147° 58,928' E	1804.5

Station	Date / Time UTC	Device	Device Abbreviation	Action	Latitude	Longitude	Depth (m)
SO252_41-1	07/12/2016 17:55:12	KONGSBERG EM122	EM122	profile end	5° 8,413' S	147° 42,510' E	1777.4
SO252_41-1	07/12/2016 17:55:20	KONGSBERG EM122	EM122	station end	5° 8,420' S	147° 42,499' E	1779.2
SO252_42-1	07/12/2016 22:00:40	HyBIS	HyBIS	station start	5° 29,371' S	148° 2,323' E	954.6
SO252_42-1	07/12/2016 23:49:15	HyBIS	HyBIS	in the water	5° 29,368' S	148° 2,322' E	954.8
SO252_42-1	07/12/2016 23:52:28	HyBIS	HyBIS	in the water	5° 29,367' S	148° 2,322' E	954.9
SO252_42-1	08/12/2016 00:07:25	HyBIS	HyBIS	information	5° 29,368' S	148° 2,326' E	955.7
SO252_42-1	08/12/2016 00:24:37	HyBIS	HyBIS	on deck	5° 29,368' S	148° 2,322' E	954.5
SO252_42-1	08/12/2016 00:26:04	HyBIS	HyBIS	on deck	5° 29,368' S	148° 2,321' E	954.3
SO252_42-1	08/12/2016 00:30:23	HyBIS	HyBIS	in the water	5° 29,367' S	148° 2,325' E	954.6
SO252_42-1	08/12/2016 00:33:12	HyBIS	HyBIS	in the water	5° 29,370' S	148° 2,323' E	956
SO252_42-1	08/12/2016 00:55:39	HyBIS	HyBIS	max depth/on ground	5° 29,364' S	148° 2,330' E	964.5
SO252_42-1	08/12/2016 00:57:51	HyBIS	HyBIS	profile start	5° 29,365' S	148° 2,329' E	965.1
SO252_42-1	08/12/2016 02:14:40	HyBIS	HyBIS	hoisting	5° 29,713' S	148° 2,185' E	976.4
SO252_42-1	08/12/2016 02:34:38	HyBIS	HyBIS	information	5° 29,713' S	148° 2,180' E	978.5
SO252_42-1	08/12/2016 02:37:14	HyBIS	HyBIS	on deck	5° 29,714' S	148° 2,181' E	976.8
SO252_42-1	08/12/2016 02:39:18	HyBIS	HyBIS	station end	5° 29,714' S	148° 2,182' E	976.9
SO252_43-1	08/12/2016 03:46:55	HyBIS	HyBIS	station start	5° 28,753' S	148° 1,289' E	835.3
SO252_43-1	08/12/2016 03:48:43	HyBIS	HyBIS	in the water	5° 28,768' S	148° 1,296' E	800.7
SO252_43-1	08/12/2016 03:51:31	HyBIS	HyBIS	information	5° 28,777' S	148° 1,309' E	807.9
SO252_43-1	08/12/2016 04:12:51	HyBIS	HyBIS	max depth/on ground	5° 28,811' S	148° 1,354' E	848.9
SO252_43-1	08/12/2016 05:18:52	HyBIS	HyBIS	hoisting	5° 29,062' S	148° 1,011' E	1072
SO252_43-1	08/12/2016 06:54:31	HyBIS	HyBIS	on deck	5° 29,137' S	148° 0,942' E	1111.3
SO252_43-1	08/12/2016 06:56:54	HyBIS	HyBIS	station end	5° 29,138' S	148° 0,944' E	1109.3

Station	Date / Time UTC	Device	Device Abbreviation	Action	Latitude	Longitude	Depth (m)
SO252_44-1	08/12/2016 07:40:36	KONGSBERG EM122	EM122	station start	5° 31,528' S	148° 2,761' E	877.9
SO252_44-1	08/12/2016 07:40:42	KONGSBERG EM122	EM122	profile start	5° 31,531' S	148° 2,748' E	852.3
SO252_44-1	08/12/2016 07:52:44	KONGSBERG EM122	EM122	alter course	5° 31,817' S	148° 1,436' E	259.7
SO252_44-1	08/12/2016 09:22:37	KONGSBERG EM122	EM122	alter course	5° 26,304' S	147° 54,312' E	978.3
SO252_44-1	08/12/2016 11:46:18	KONGSBERG EM122	EM122	alter course	5° 17,220' S	147° 43,155' E	1317
SO252_44-1	08/12/2016 13:40:15	KONGSBERG EM122	EM122	alter course	5° 6,094' S	147° 40,561' E	1753.9
SO252_44-1	08/12/2016 16:36:20	KONGSBERG EM122	EM122	alter course	4° 58,792' S	147° 56,516' E	1825.7
SO252_44-1	08/12/2016 19:42:35	KONGSBERG EM122	EM122	alter course	4° 55,015' S	147° 38,742' E	1838.7
SO252_44-1	08/12/2016 20:36:07	KONGSBERG EM122	EM122	alter course	4° 50,161' S	147° 40,463' E	1844.3
SO252_44-1	08/12/2016 22:06:39	KONGSBERG EM122	EM122	profile end	4° 55,714' S	147° 47,407' E	1839.8
SO252_44-1	08/12/2016 22:07:32	KONGSBERG EM122	EM122	station end	4° 55,773' S	147° 47,470' E	1838.8
SO252_45-1	08/12/2016 23:41:47	HyBIS	HyBIS	station start	4° 56,505' S	147° 46,495' E	1839.9
SO252_45-1	08/12/2016 23:48:12	HyBIS	HyBIS	in the water	4° 56,503' S	147° 46,495' E	1839.9
SO252_45-1	08/12/2016 23:51:24	HyBIS	HyBIS	in the water	4° 56,503' S	147° 46,494' E	1839.5
SO252_45-1	09/12/2016 00:36:02	HyBIS	HyBIS	max depth/on ground	4° 56,511' S	147° 46,495' E	1840
SO252_45-1	09/12/2016 00:38:57	HyBIS	HyBIS	profile start	4° 56,511' S	147° 46,495' E	1839.9
SO252_45-1	09/12/2016 00:42:48	HyBIS	HyBIS	information	4° 56,503' S	147° 46,494' E	1839.8
SO252_45-1	09/12/2016 00:45:08	HyBIS	HyBIS	alter course	4° 56,501' S	147° 46,495' E	1840.5
SO252_45-1	09/12/2016 00:51:11	HyBIS	HyBIS	information	4° 56,502' S	147° 46,488' E	1840.2
SO252_45-1	09/12/2016 00:52:56	HyBIS	HyBIS	hoisting	4° 56,501' S	147° 46,489' E	1840.5
SO252_45-1	09/12/2016 01:40:57	HyBIS	HyBIS	on deck	4° 56,507' S	147° 46,492' E	1843.6
SO252_45-1	09/12/2016 01:43:46	HyBIS	HyBIS	on deck	4° 56,507' S	147° 46,491' E	1840.4
SO252_45-1	09/12/2016 01:44:02	HyBIS	HyBIS	station end	4° 56,507' S	147° 46,491' E	1840.5

Station	Date / Time UTC	Device	Device Abbreviation	Action	Latitude	Longitude	Depth (m)
SO252_46-1	09/12/2016 02:58:16	HyBIS	HyBIS	station start	5° 4,784' S	147° 50,220' E	1829.5
SO252_46-1	09/12/2016 03:04:09	HyBIS	HyBIS	in the water	5° 4,720' S	147° 50,190' E	1830.3
SO252_46-1	09/12/2016 03:07:01	HyBIS	HyBIS	information	5° 4,724' S	147° 50,192' E	1829.4
SO252_46-1	09/12/2016 03:53:33	HyBIS	HyBIS	max depth/on ground	5° 4,721' S	147° 50,191' E	1830.3
SO252_46-1	09/12/2016 03:55:51	HyBIS	HyBIS	hoisting	5° 4,720' S	147° 50,192' E	1829.6
SO252_46-1	09/12/2016 04:55:56	HyBIS	HyBIS	information	5° 4,720' S	147° 50,193' E	1829.5
SO252_46-1	09/12/2016 05:00:00	HyBIS	HyBIS	on deck	5° 4,717' S	147° 50,192' E	1829.7
SO252_46-1	09/12/2016 05:01:07	HyBIS	HyBIS	station end	5° 4,717' S	147° 50,192' E	1829.3
SO252_47-1	09/12/2016 06:12:15	HyBIS	HyBIS	station start	5° 13,110' S	147° 52,406' E	1790.2
SO252_47-1	09/12/2016 06:18:57	HyBIS	HyBIS	in the water	5° 13,103' S	147° 52,416' E	1790.6
SO252_47-1	09/12/2016 07:10:23	HyBIS	HyBIS	max depth/on ground	5° 13,105' S	147° 52,418' E	67
SO252_47-1	09/12/2016 07:14:44	HyBIS	HyBIS	information	5° 13,105' S	147° 52,416' E	73
SO252_47-1	09/12/2016 07:15:16	HyBIS	HyBIS	hoisting	5° 13,106' S	147° 52,416' E	61
SO252_47-1	09/12/2016 08:01:12	HyBIS	HyBIS	on deck	5° 13,104' S	147° 52,414' E	57
SO252_47-1	09/12/2016 08:02:41	HyBIS	HyBIS	station end	5° 13,105' S	147° 52,414' E	63
SO252_48-1	09/12/2016 09:03:09	HyBIS	HyBIS	station start	5° 21,635' S	147° 54,074' E	1718.4
SO252_48-1	09/12/2016 09:07:57	HyBIS	HyBIS	in the water	5° 21,626' S	147° 54,071' E	1719
SO252_48-1	09/12/2016 09:10:04	HyBIS	HyBIS	information	5° 21,615' S	147° 54,070' E	1718.2
SO252_48-1	09/12/2016 09:54:48	HyBIS	HyBIS	information	5° 21,604' S	147° 54,067' E	1718.3
SO252_48-1	09/12/2016 09:58:35	HyBIS	HyBIS	information	5° 21,605' S	147° 54,065' E	1719.2
SO252_48-1	09/12/2016 09:58:50	HyBIS	HyBIS	hoisting	5° 21,605' S	147° 54,065' E	1718.8
SO252_48-1	09/12/2016 10:38:36	HyBIS	HyBIS	on deck	5° 21,607' S	147° 54,071' E	1718.4
SO252_48-1	09/12/2016 10:42:32	HyBIS	HyBIS	on deck	5° 21,607' S	147° 54,071' E	1719.1

Station	Date / Time UTC	Device	Device Abbreviation	Action	Latitude	Longitude	Depth (m)
SO252_48-1	09/12/2016 10:43:18	HyBIS	HyBIS	station end	5° 21,607' S	147° 54,071' E	1717.9
SO252_49-1	09/12/2016 11:39:24	KONGSBERG EM122	EM122	station start	5° 21,482' S	148° 1,707' E	1485.7
SO252_49-1	09/12/2016 11:47:33	KONGSBERG EM122	EM122	profile start	5° 22,154' S	148° 2,022' E	1208.9
SO252_49-1	09/12/2016 12:25:19	KONGSBERG EM122	EM122	alter course	5° 25,948' S	148° 2,272' E	620.8
SO252_49-1	09/12/2016 13:00:03	KONGSBERG EM122	EM122	alter course	5° 27,885' S	148° 5,098' E	652.3
SO252_49-1	09/12/2016 13:19:40	KONGSBERG EM122	EM122	alter course	5° 27,904' S	148° 7,064' E	947.8
SO252_49-1	09/12/2016 13:35:10	KONGSBERG EM122	EM122	alter course	5° 26,703' S	148° 8,007' E	977.1
SO252_49-1	09/12/2016 14:22:24	KONGSBERG EM122	EM122	alter course	5° 21,961' S	148° 8,044' E	1159.7
SO252_49-1	09/12/2016 15:06:23	KONGSBERG EM122	EM122	alter course	5° 20,632' S	148° 3,909' E	959.3
SO252_49-1	09/12/2016 15:28:44	KONGSBERG EM122	EM122	alter course	5° 21,968' S	148° 2,155' E	1222.6
SO252_49-1	09/12/2016 15:34:17	KONGSBERG EM122	EM122	alter course	5° 21,853' S	148° 1,802' E	1394.1
SO252_49-1	09/12/2016 16:00:05	KONGSBERG EM122	EM122	station end	5° 20,160' S	148° 3,730' E	1260.1
SO252_50-1	09/12/2016 17:27:00	Parasound P70	PS	station start	5° 15,006' S	148° 10,379' E	1691.1
SO252_50-1	09/12/2016 19:12:27	Parasound P70	PS	alter course	5° 23,571' S	148° 16,619' E	1471.3
SO252_50-1	09/12/2016 20:28:11	Parasound P70	PS	profile end	5° 25,688' S	148° 9,567' E	1089.7
SO252_50-1	09/12/2016 20:28:15	Parasound P70	PS	station end	5° 25,690' S	148° 9,560' E	1086.1
SO252_51-1	09/12/2016 21:56:46	HyBIS	HyBIS	station start	5° 30,951' S	148° 2,379' E	930.5
SO252_51-1	09/12/2016 21:58:38	HyBIS	HyBIS	in the water	5° 30,950' S	148° 2,379' E	930.3
SO252_51-1	09/12/2016 21:59:03	HyBIS	HyBIS	in the water	5° 30,950' S	148° 2,380' E	930.2
SO252_51-1	09/12/2016 22:33:09	HyBIS	HyBIS	profile start	5° 30,946' S	148° 2,385' E	929.7
SO252_51-1	09/12/2016 22:41:09	HyBIS	HyBIS	alter course	5° 30,951' S	148° 2,367' E	931.1
SO252_51-1	09/12/2016 22:53:25	HyBIS	HyBIS	alter course	5° 30,992' S	148° 2,324' E	929.1
SO252_51-1	09/12/2016 23:03:02	HyBIS	HyBIS	alter course	5° 30,942' S	148° 2,321' E	936

Station	Date / Time UTC	Device	Device Abbreviation	Action	Latitude	Longitude	Depth (m)
SO252_51-1	09/12/2016 23:08:51	HyBIS	HyBIS	alter course	5° 30,939' S	148° 2,328' E	937.1
SO252_51-1	09/12/2016 23:22:26	HyBIS	HyBIS	alter course	5° 30,939' S	148° 2,387' E	930.3
SO252_51-1	09/12/2016 23:27:29	HyBIS	HyBIS	alter course	5° 30,948' S	148° 2,398' E	929.9
SO252_51-1	09/12/2016 23:36:38	HyBIS	HyBIS	information	5° 30,948' S	148° 2,386' E	929.8
SO252_51-1	09/12/2016 23:37:24	HyBIS	HyBIS	hoisting	5° 30,948' S	148° 2,386' E	929.5
SO252_51-1	10/12/2016 00:00:52	HyBIS	HyBIS	on deck	5° 30,948' S	148° 2,382' E	930.3
SO252_51-1	10/12/2016 00:05:09	HyBIS	HyBIS	on deck	5° 30,945' S	148° 2,383' E	930
SO252_51-1	10/12/2016 00:06:39	HyBIS	HyBIS	station end	5° 30,945' S	148° 2,383' E	929.9
SO252_52-1	10/12/2016 00:40:36	HyBIS	HyBIS	station start	5° 29,559' S	148° 2,237' E	970.6
SO252_52-1	10/12/2016 00:45:58	HyBIS	HyBIS	in the water	5° 29,568' S	148° 2,232' E	992.5
SO252_52-1	10/12/2016 00:49:29	HyBIS	HyBIS	in the water	5° 29,572' S	148° 2,233' E	1057.7
SO252_52-1	10/12/2016 01:13:28	HyBIS	HyBIS	max depth/on ground	5° 29,567' S	148° 2,239' E	989
SO252_52-1	10/12/2016 01:14:23	HyBIS	HyBIS	profile start	5° 29,568' S	148° 2,237' E	993.4
SO252_52-1	10/12/2016 01:15:20	HyBIS	HyBIS	alter course	5° 29,568' S	148° 2,236' E	1061.8
SO252_52-1	10/12/2016 01:25:17	HyBIS	HyBIS	alter course	5° 29,567' S	148° 2,225' E	996.6
SO252_52-1	10/12/2016 01:36:41	HyBIS	HyBIS	max depth/on ground	5° 29,561' S	148° 2,222' E	990.6
SO252_52-1	10/12/2016 01:37:13	HyBIS	HyBIS	hoisting	5° 29,560' S	148° 2,222' E	998.1
SO252_52-1	10/12/2016 02:03:42	HyBIS	HyBIS	information	5° 29,561' S	148° 2,224' E	989.8
SO252_52-1	10/12/2016 02:06:36	HyBIS	HyBIS	on deck	5° 29,560' S	148° 2,221' E	992.8
SO252_52-1	10/12/2016 02:07:38	HyBIS	HyBIS	station end	5° 29,560' S	148° 2,221' E	980.2
SO252_53-1	10/12/2016 02:43:59	HyBIS	HyBIS	station start	5° 29,902' S	148° 3,490' E	760
SO252_53-1	10/12/2016 02:46:02	HyBIS	HyBIS	in the water	5° 29,904' S	148° 3,492' E	750
SO252_53-1	10/12/2016 02:48:56	HyBIS	HyBIS	information	5° 29,906' S	148° 3,493' E	748.1

Station	Date / Time UTC	Device	Device Abbreviation	Action	Latitude	Longitude	Depth (m)
SO252_53-1	10/12/2016 03:10:03	HyBIS	HyBIS	max depth/on ground	5° 29,901' S	148° 3,487' E	759.1
SO252_53-1	10/12/2016 03:26:02	HyBIS	HyBIS	hoisting	5° 29,901' S	148° 3,494' E	747.6
SO252_53-1	10/12/2016 03:44:30	HyBIS	HyBIS	information	5° 29,902' S	148° 3,493' E	746.2
SO252_53-1	10/12/2016 03:46:40	HyBIS	HyBIS	on deck	5° 29,902' S	148° 3,493' E	951.6
SO252_53-1	10/12/2016 03:47:19	HyBIS	HyBIS	station end	5° 29,902' S	148° 3,493' E	747
SO252_54-1	10/12/2016 04:24:36	HyBIS	HyBIS	station start	5° 29,066' S	148° 3,299' E	930
SO252_54-1	10/12/2016 04:25:40	HyBIS	HyBIS	in the water	5° 29,075' S	148° 3,303' E	931.2
SO252_54-1	10/12/2016 04:29:11	HyBIS	HyBIS	information	5° 29,068' S	148° 3,304' E	930.2
SO252_54-1	10/12/2016 04:55:31	HyBIS	HyBIS	max depth/on ground	5° 29,071' S	148° 3,303' E	930.5
SO252_54-1	10/12/2016 05:19:58	HyBIS	HyBIS	hoisting	5° 29,141' S	148° 3,333' E	931.7
SO252_54-1	10/12/2016 05:42:48	HyBIS	HyBIS	information	5° 29,135' S	148° 3,330' E	927.4
SO252_54-1	10/12/2016 05:46:18	HyBIS	HyBIS	on deck	5° 29,135' S	148° 3,331' E	931.3
SO252_54-1	10/12/2016 05:47:17	HyBIS	HyBIS	station end	5° 29,135' S	148° 3,332' E	928.3
SO252_55-1	10/12/2016 07:52:05	KONGSBERG EM710	EM710	station start	5° 30,443' S	148° 0,498' E	655.2
SO252_55-1	10/12/2016 07:52:11	KONGSBERG EM710	EM710	profile start	5° 30,446' S	148° 0,503' E	652.7
SO252_55-1	10/12/2016 09:10:48	KONGSBERG EM710	EM710	alter course	5° 33,164' S	148° 5,016' E	781.9
SO252_55-1	10/12/2016 10:34:33	KONGSBERG EM710	EM710	alter course	5° 30,286' S	148° 0,629' E	720.5
SO252_55-1	10/12/2016 12:06:16	KONGSBERG EM710	EM710	alter course	5° 32,919' S	148° 5,223' E	736.1
SO252_55-1	10/12/2016 13:34:39	KONGSBERG EM710	EM710	alter course	5° 29,939' S	148° 0,714' E	827
SO252_55-1	10/12/2016 15:04:36	KONGSBERG EM710	EM710	alter course	5° 32,625' S	148° 5,385' E	696.8
SO252_55-1	10/12/2016 16:27:47	KONGSBERG EM710	EM710	alter course	5° 29,762' S	148° 1,032' E	1005
SO252_55-1	10/12/2016 17:13:39	KONGSBERG EM710	EM710	alter course	5° 27,100' S	148° 2,233' E	984.1
SO252_55-1	10/12/2016 18:31:21	KONGSBERG EM710	EM710	alter course	5° 29,782' S	148° 6,573' E	684.2

Station	Date / Time UTC	Device	Device Abbreviation	Action	Latitude	Longitude	Depth (m)
SO252_55-1	10/12/2016 19:56:01	KONGSBERG EM710	EM710	alter course	5° 26,741' S	148° 2,109' E	971
SO252_55-1	10/12/2016 21:21:39	KONGSBERG EM710	EM710	alter course	5° 29,533' S	148° 6,755' E	786.3
SO252_55-1	10/12/2016 22:20:06	KONGSBERG EM710	EM710	profile end	5° 27,403' S	148° 3,659' E	767.8
SO252_55-1	10/12/2016 22:21:45	KONGSBERG EM710	EM710	station end	5° 27,322' S	148° 3,546' E	687.1
SO252_56-1	10/12/2016 23:10:08	HyBIS	HyBIS	station start	5° 31,367' S	148° 6,326' E	288.3
SO252_56-1	10/12/2016 23:14:41	HyBIS	HyBIS	in the water	5° 31,359' S	148° 6,323' E	286.6
SO252_56-1	10/12/2016 23:17:18	HyBIS	HyBIS	in the water	5° 31,364' S	148° 6,324' E	287.1
SO252_56-1	10/12/2016 23:29:17	HyBIS	HyBIS	max depth/on ground	5° 31,364' S	148° 6,319' E	290
SO252_56-1	10/12/2016 23:33:53	HyBIS	HyBIS	alter course	5° 31,363' S	148° 6,321' E	292.3
SO252_56-1	11/12/2016 00:06:51	HyBIS	HyBIS	information	5° 31,285' S	148° 6,405' E	200.5
SO252_56-1	11/12/2016 00:18:35	HyBIS	HyBIS	alter course	5° 31,268' S	148° 6,415' E	196.3
SO252_56-1	11/12/2016 01:00:07	HyBIS	HyBIS	information	5° 31,472' S	148° 6,410' E	189.4
SO252_56-1	11/12/2016 01:02:40	HyBIS	HyBIS	information	5° 31,475' S	148° 6,409' E	179
SO252_56-1	11/12/2016 01:05:16	HyBIS	HyBIS	information	5° 31,489' S	148° 6,409' E	159.7
SO252_56-1	11/12/2016 01:06:06	HyBIS	HyBIS	hoisting	5° 31,493' S	148° 6,409' E	155.4
SO252_56-1	11/12/2016 01:16:51	HyBIS	HyBIS	on deck	5° 31,507' S	148° 6,394' E	126.8
SO252_56-1	11/12/2016 01:20:21	HyBIS	HyBIS	on deck	5° 31,507' S	148° 6,394' E	128.1
SO252_56-1	11/12/2016 01:24:51	HyBIS	HyBIS	station end	5° 31,504' S	148° 6,398' E	141
SO252_57-1	11/12/2016 02:28:57	HyBIS	HyBIS	station start	5° 31,481' S	148° 7,334' E	393.3
SO252_57-1	11/12/2016 02:30:00	HyBIS	HyBIS	in the water	5° 31,479' S	148° 7,336' E	392.6
SO252_57-1	11/12/2016 02:31:46	HyBIS	HyBIS	information	5° 31,478' S	148° 7,337' E	394
SO252_57-1	11/12/2016 02:44:24	HyBIS	HyBIS	max depth/on ground	5° 31,474' S	148° 7,334' E	390.7
SO252_57-1	11/12/2016 06:24:53	HyBIS	HyBIS	hoisting	5° 32,188' S	148° 6,144' E	419.1

Station	Date / Time UTC	Device	Device Abbreviation	Action	Latitude	Longitude	Depth (m)
SO252_57-1	11/12/2016 06:39:10	HyBIS	HyBIS	on deck	5° 32,185' S	148° 6,140' E	424.2
SO252_57-1	11/12/2016 06:44:00	HyBIS	HyBIS	station end	5° 32,202' S	148° 6,130' E	432.4
SO252_58-1	11/12/2016 08:39:52	KONGSBERG EM122	EM122	station start	5° 14,820' S	148° 12,052' E	1681.3
SO252_58-1	11/12/2016 08:40:00	KONGSBERG EM122	EM122	profile start	5° 14,814' S	148° 12,037' E	1681.3
SO252_58-1	11/12/2016 09:31:12	KONGSBERG EM122	EM122	alter course	5° 12,656' S	148° 6,842' E	1740
SO252_58-1	11/12/2016 11:34:51	KONGSBERG EM122	EM122	alter course	5° 0,443' S	148° 1,278' E	1631.3
SO252_58-1	11/12/2016 13:49:02	KONGSBERG EM122	EM122	alter course	4° 52,838' S	147° 48,882' E	1422.2
SO252_58-1	11/12/2016 14:17:07	KONGSBERG EM122	EM122	alter course	4° 50,001' S	147° 49,742' E	1713
SO252_58-1	11/12/2016 15:39:13	KONGSBERG EM122	EM122	alter course	4° 53,258' S	147° 57,807' E	1654
SO252_58-1	11/12/2016 16:11:16	KONGSBERG EM122	EM122	alter course	4° 56,646' S	147° 58,581' E	1735.1
SO252_58-1	11/12/2016 17:00:00	KONGSBERG EM122	EM122	alter course	4° 59,421' S	148° 3,041' E	1536.9
SO252_58-1	11/12/2016 18:58:34	KONGSBERG EM122	EM122	alter course	5° 11,167' S	148° 8,249' E	1734.4
SO252_58-1	11/12/2016 19:59:57	KONGSBERG EM122	EM122	alter course	5° 13,079' S	148° 14,584' E	1623.8
SO252_58-1	11/12/2016 21:00:27	KONGSBERG EM122	EM122	profile end	5° 19,096' S	148° 12,030' E	1412.4
SO252_58-1	11/12/2016 21:00:28	KONGSBERG EM122	EM122	station end	5° 19,097' S	148° 12,029' E	1412.4
SO252_59-1	11/12/2016 22:44:25	GRAB	GRAB	station start	5° 29,072' S	148° 3,303' E	930.5
SO252_59-1	11/12/2016 23:01:06	GRAB	GRAB	in the water	5° 29,074' S	148° 3,306' E	930.9
SO252_59-1	11/12/2016 23:05:42	GRAB	GRAB	in the water	5° 29,072' S	148° 3,304' E	931
SO252_59-1	11/12/2016 23:25:14	GRAB	GRAB	information	5° 29,072' S	148° 3,305' E	929.5
SO252_59-1	11/12/2016 23:26:03	GRAB	GRAB	max depth/on ground	5° 29,072' S	148° 3,305' E	930
SO252_59-1	11/12/2016 23:28:27	GRAB	GRAB	hoisting	5° 29,073' S	148° 3,304' E	930.2
SO252_59-1	11/12/2016 23:49:53	GRAB	GRAB	on deck	5° 29,075' S	148° 3,303' E	930.6
SO252_59-1	11/12/2016 23:53:35	GRAB	GRAB	on deck	5° 29,074' S	148° 3,301' E	931.2

Station	Date / Time UTC	Device	Device Abbreviation	Action	Latitude	Longitude	Depth (m)
SO252_59-1	12/12/2016 00:34:03	GRAB	GRAB	station end	5° 29,071' S	148° 3,303' E	930.8