



Helmholtz-Zentrum für Ozeanforschung Kiel

**RV MARIA S. MERIAN Fahrtbericht /
Cruise Report MSM71
Supplement: Data Report**

**LOBSTER: Ligurian Ocean Bottom Seismology
and Tectonics Research**

Las Palmas (Spain) – Heraklion (Greece)
07.02.-27.02.2018



Berichte aus dem GEOMAR
Helmholtz-Zentrum für Ozeanforschung Kiel

Nr. 41 (N. Ser.)

February 2018

RV MARIA S. MERIAN

Cruise Report

Supplement: Data Report

Las Palmas de Gran Canaria, 07.02.2018 – Heraklion, 27.02.2018

MSM 71 - LOBSTER Ligurian Ocean Bottom Seismology & Tectonics Research



Heidrun Kopp, Dietrich Lange, Martin Thorwart, Anne Paul, Anke Dannowski, Florian Petersen,
Coralie Aubert, Florian Beek, Anouk Beniest, Simon Besançon, Andreas Brotzer, Grazia Caielli,
Wayne Crawford, Martha Deen, Carsten Lehmann, Kevin Marquardt, Morlin Neckel, Leonie Papanagnou,
Bettina Schramm, Patrick Schröder, Klaus-Peter Steffen, Felix Wolf, Yueyang Xia

GEOMAR Helmholtz Centre for Ocean Research Kiel

February 2018

Chief Scientist MSM 71:

Prof. Dr. habil. Heidrun Kopp

GEOMAR Helmholtz Centre for Ocean Research Kiel

Wischhofstr. 1-3, 24148 Kiel, Germany

P: +49 431 600 2334

F: +49 431 600 2922

hkopp@geomar.de

Co-Chief Scientist MSM 71:

Dr. Dietrich Lange

GEOMAR Helmholtz Centre for Ocean Research Kiel

Wischhofstr. 1-3, 24148 Kiel, Germany

P: +49 431 600 2334

F: +49 431 600 2922

dlange@geomar.de

Master RV MARIA S. MERIAN:

Ralf Schmidt

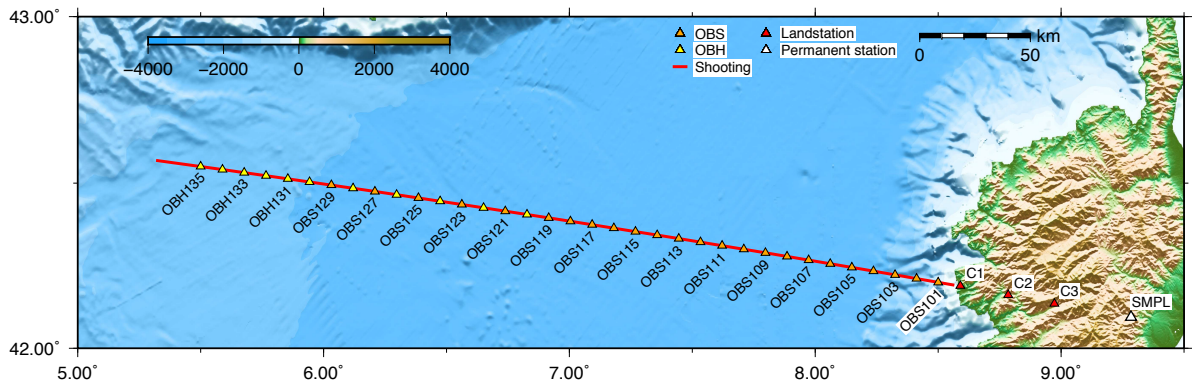
RV MARIA S MERIAN

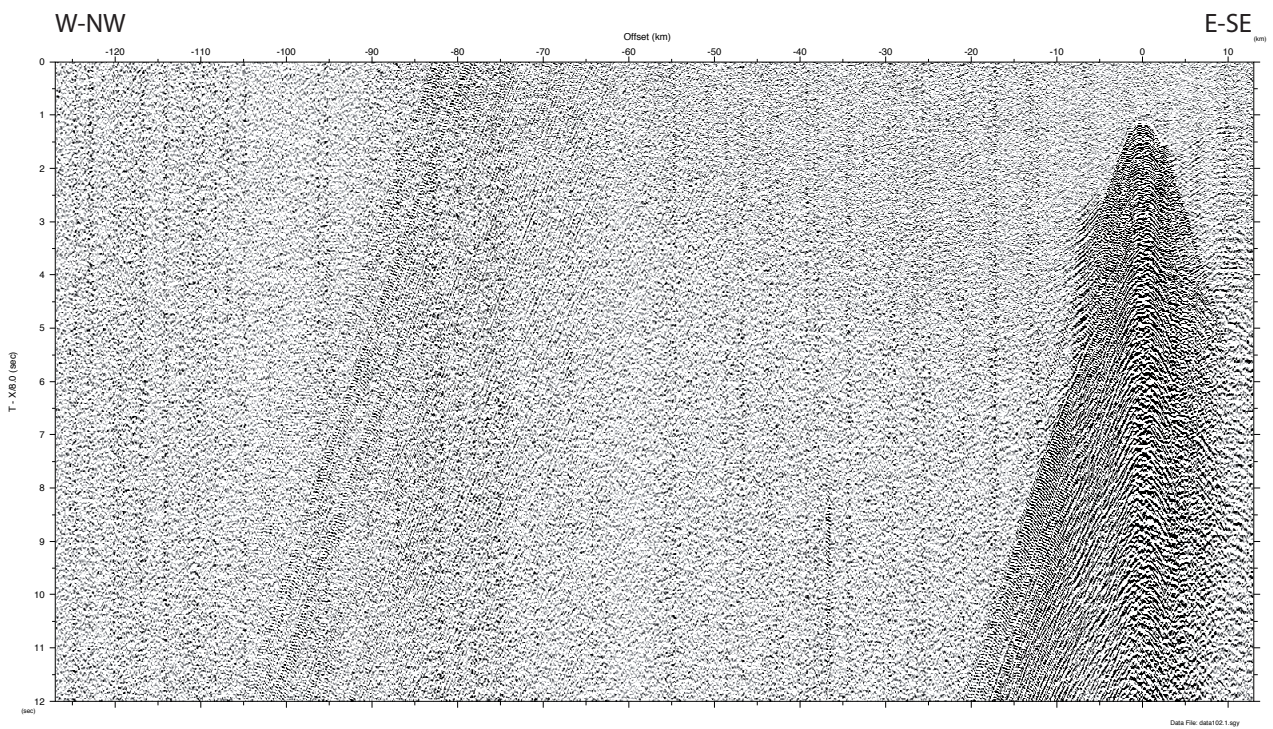
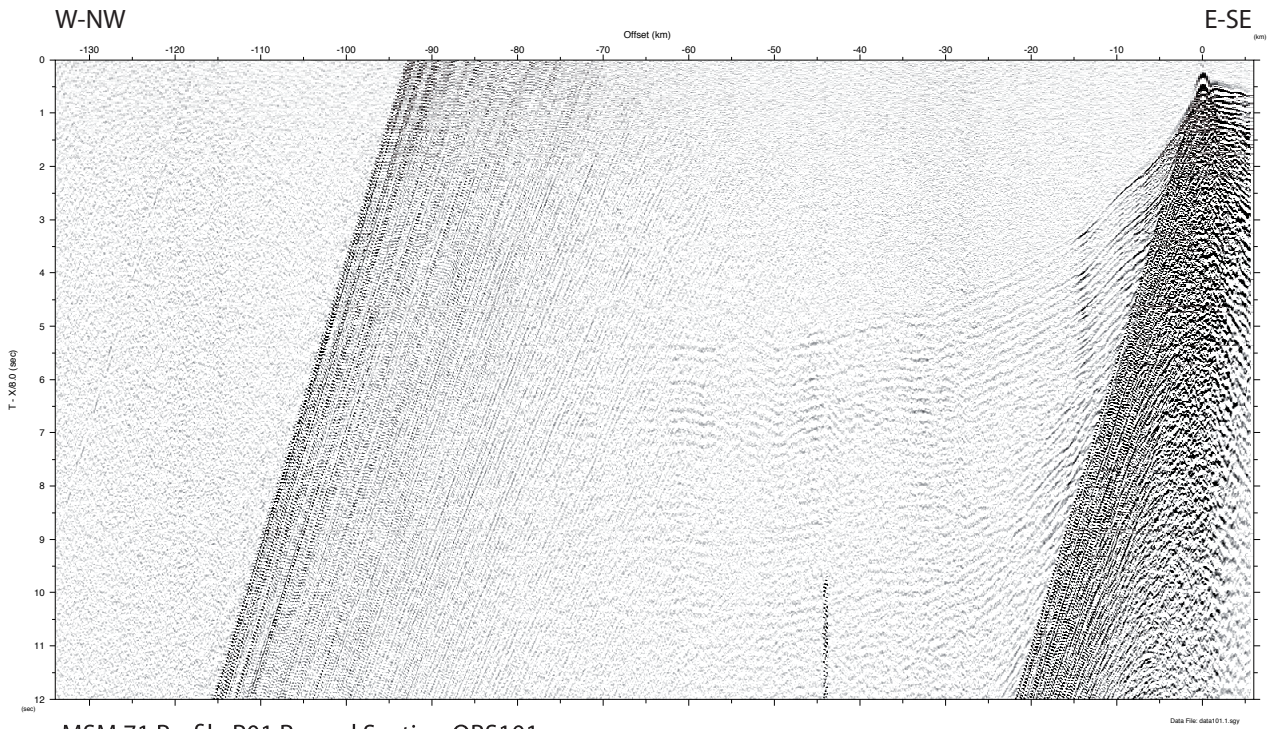
P: +870 764 354 964

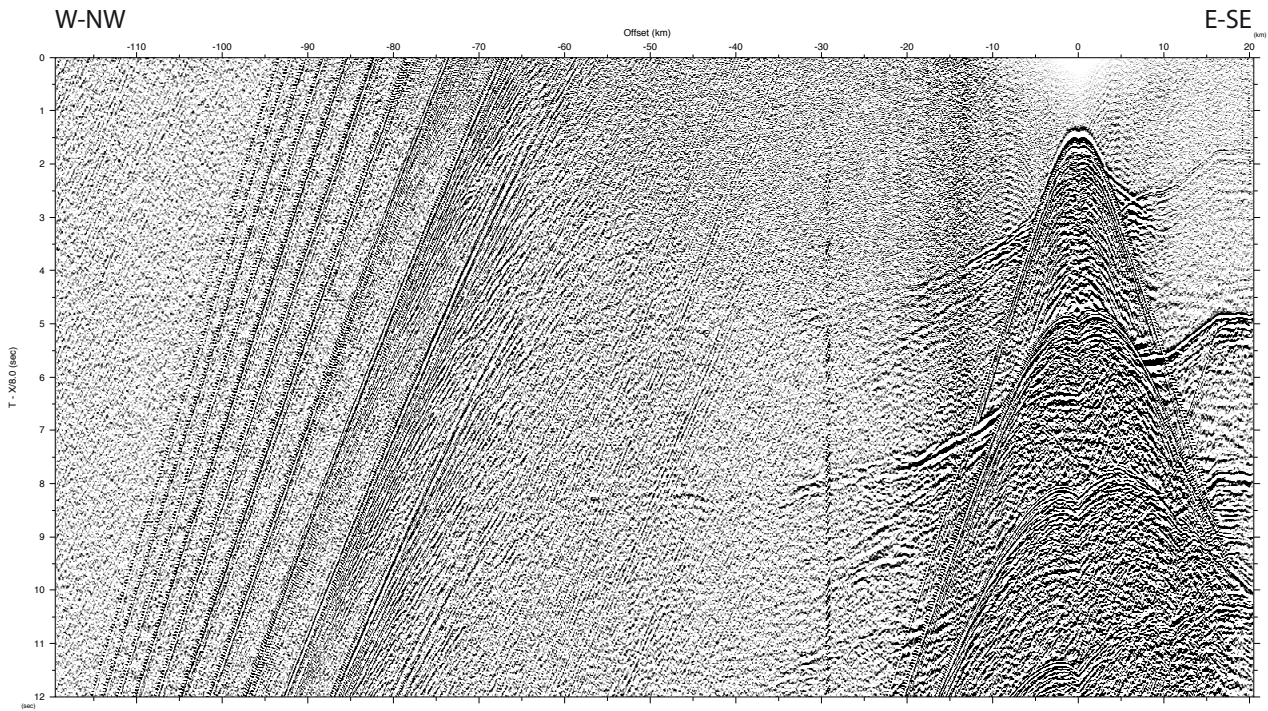
F: +870 764 354 966

master@merian.briese-research.de

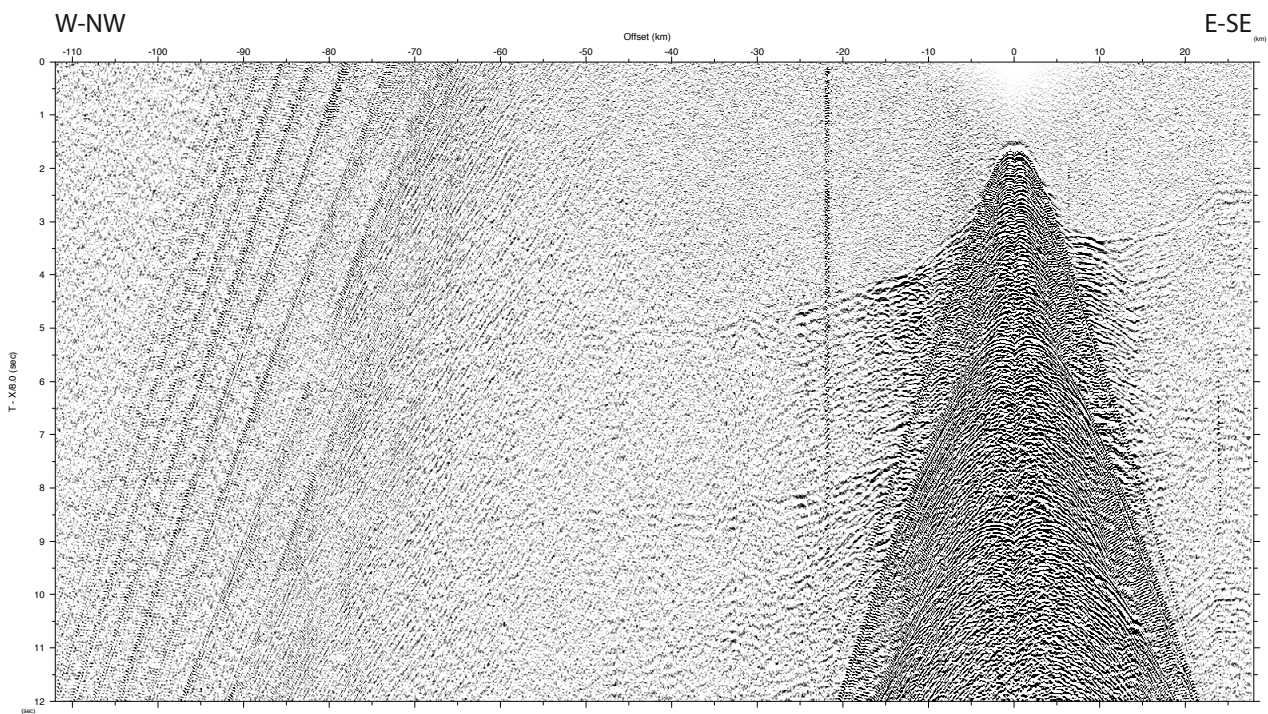
Record Sections OBS 101 – OBH 135, Profile P01



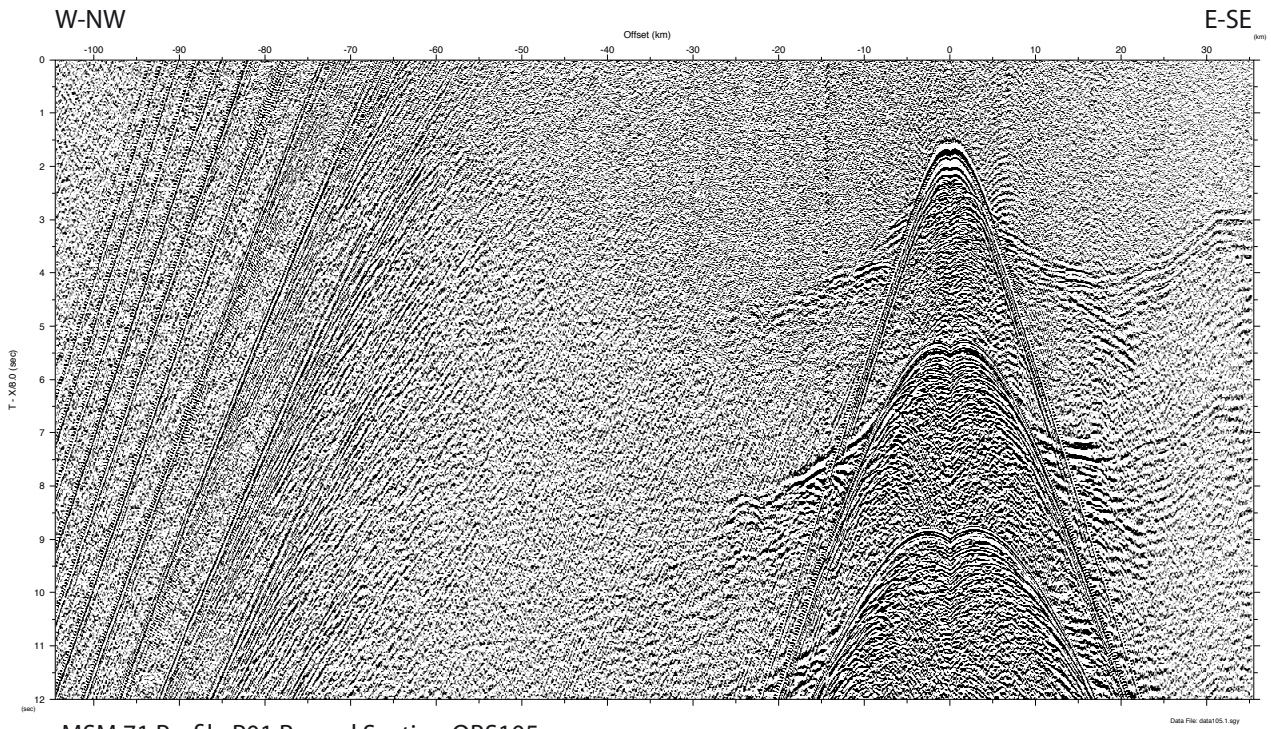




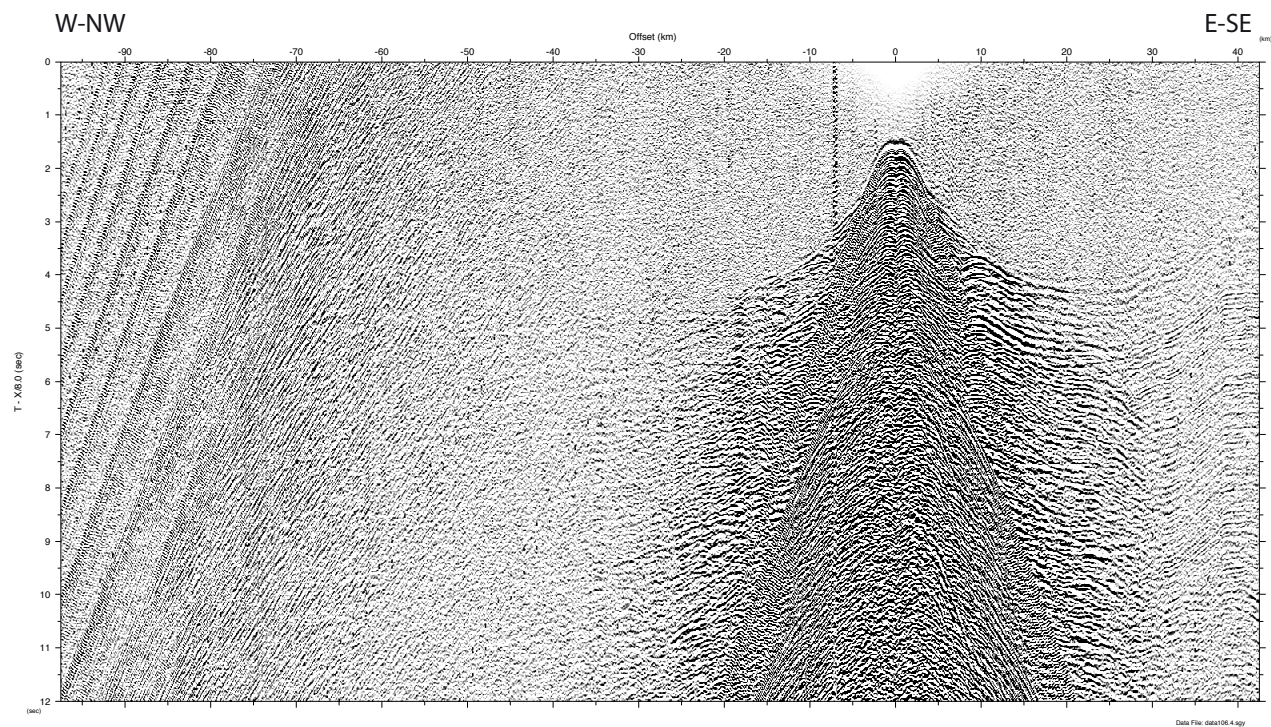
MSM 71 Profile P01 Record Section OBS103



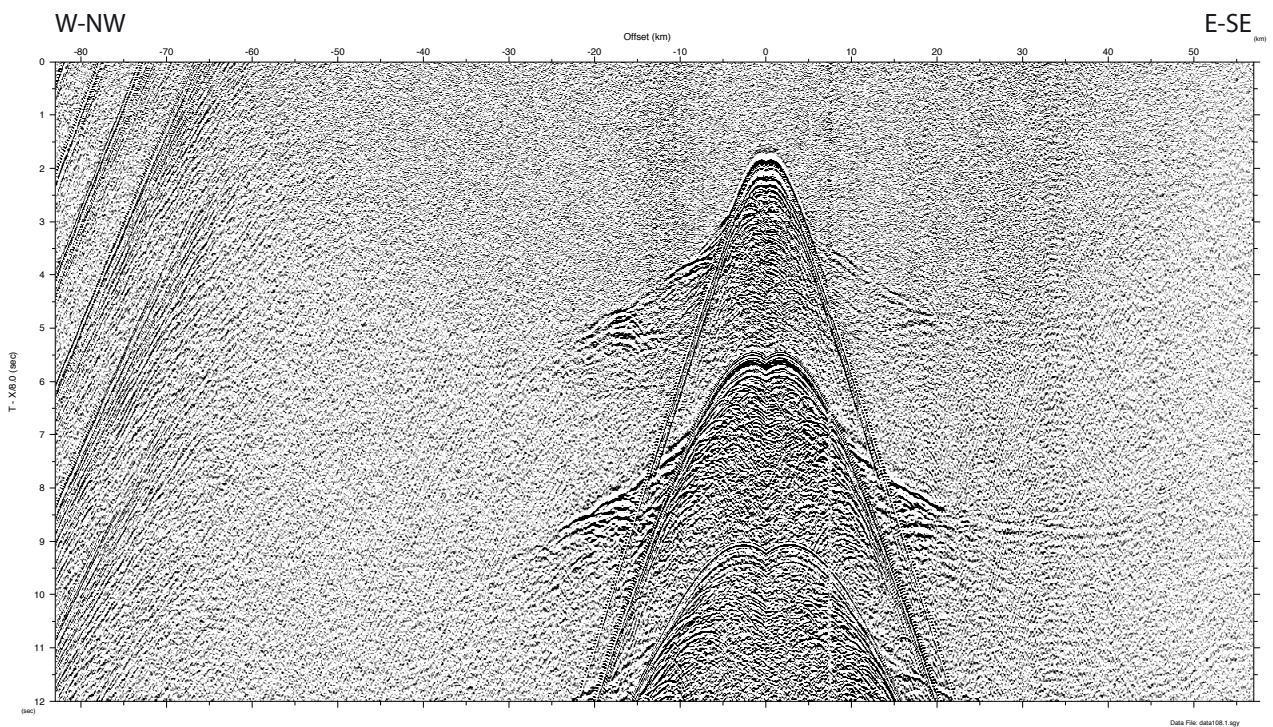
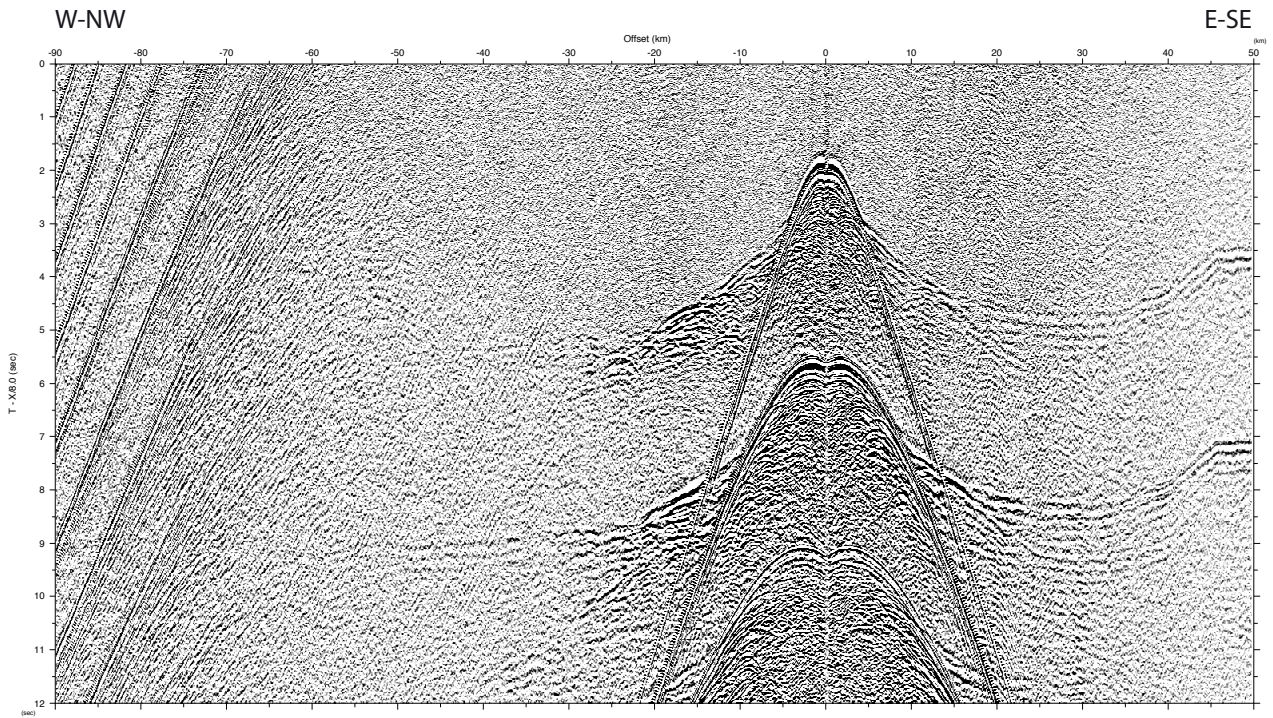
MSM 71 Profile P01 Record Section OBS104 - vertical component

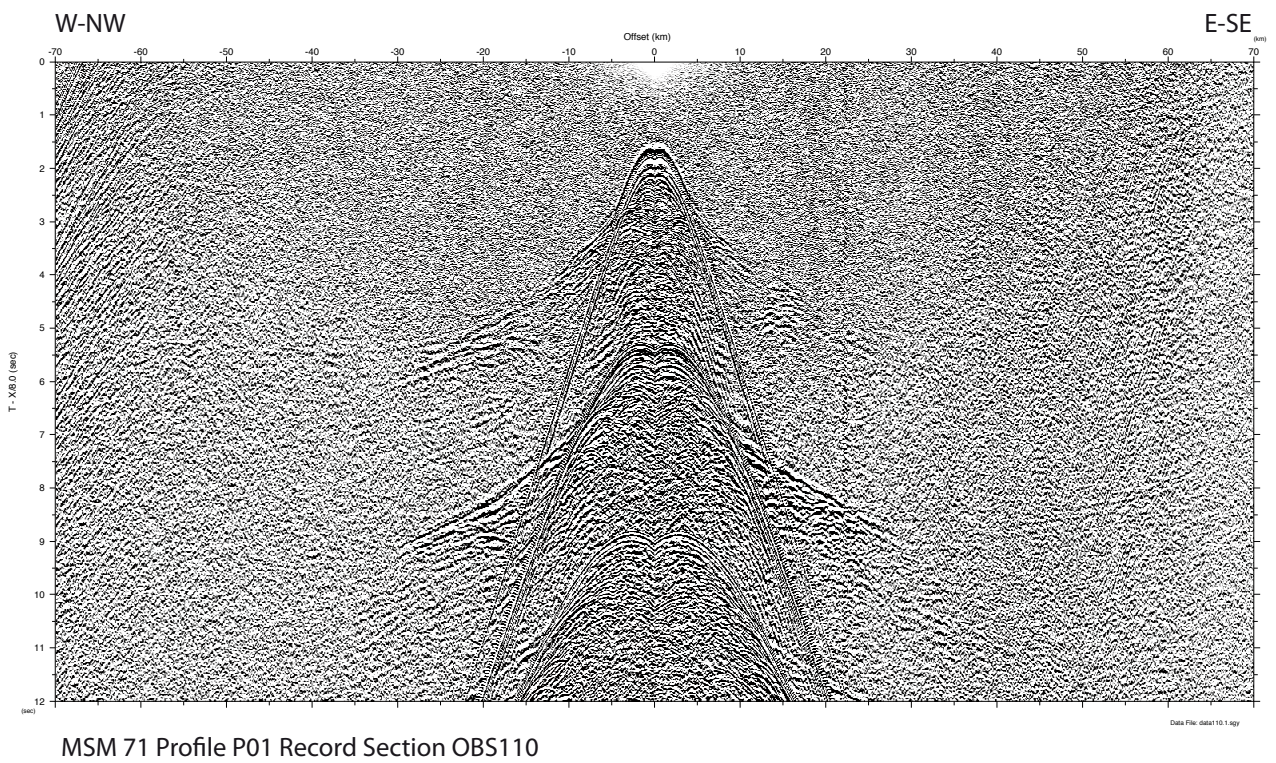
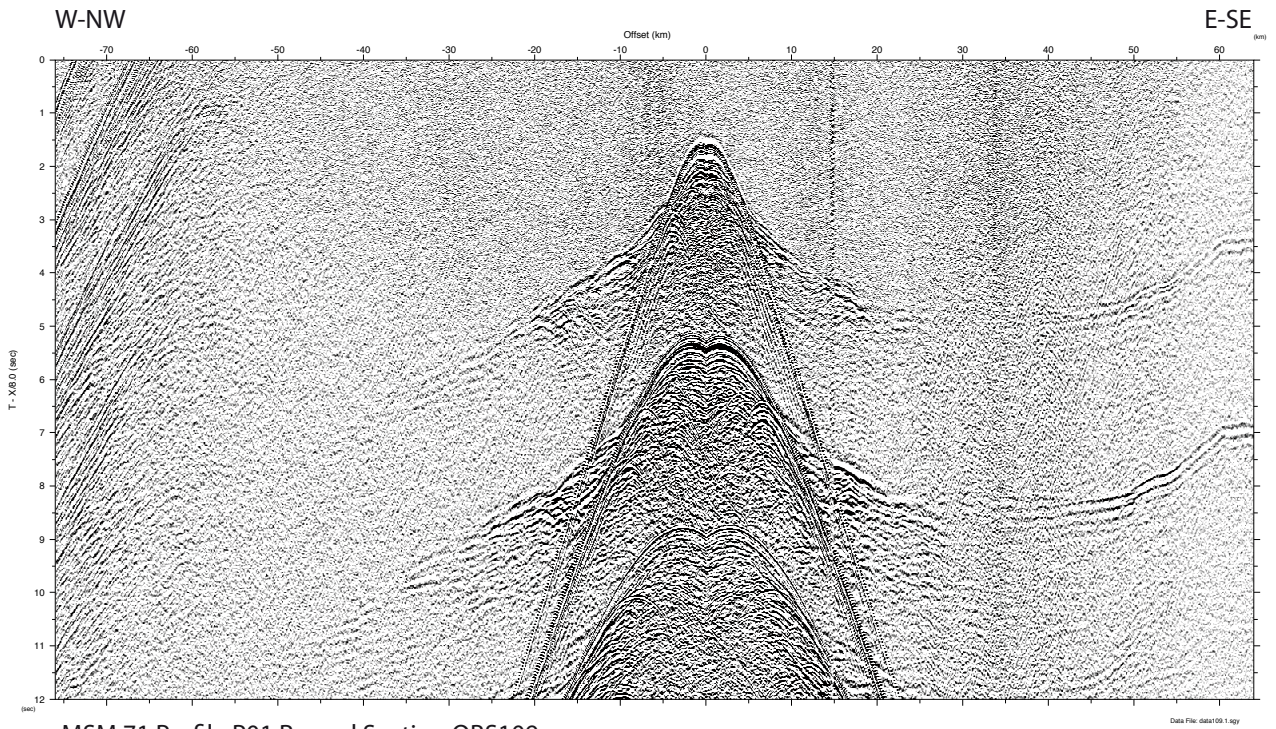


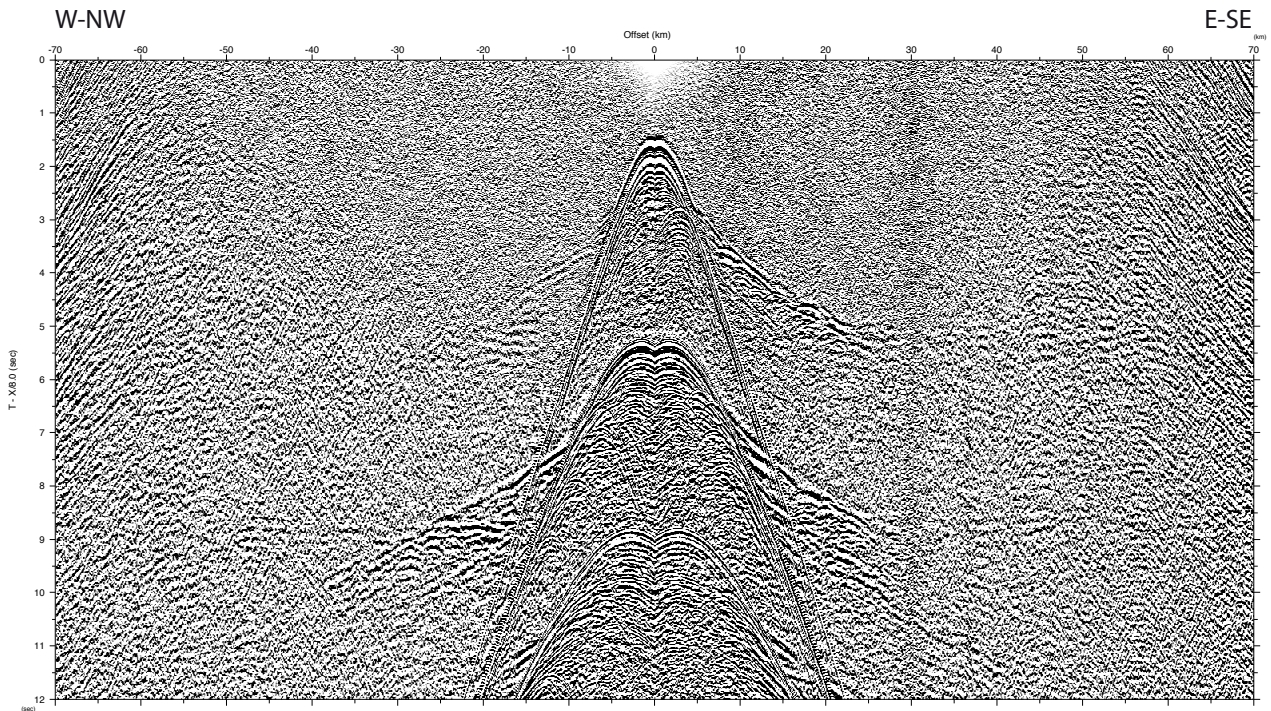
MSM 71 Profile P01 Record Section OBS105



MSM 71 Profile P01 Record Section OBS106 - vertical component

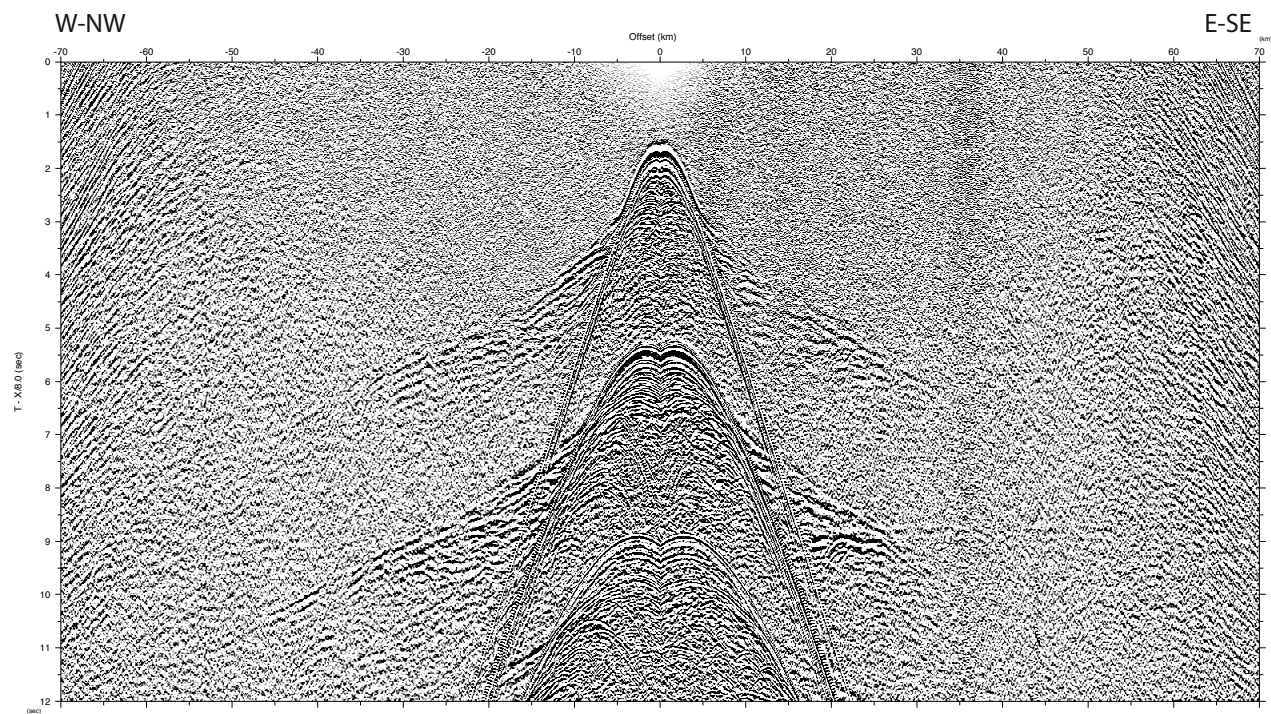






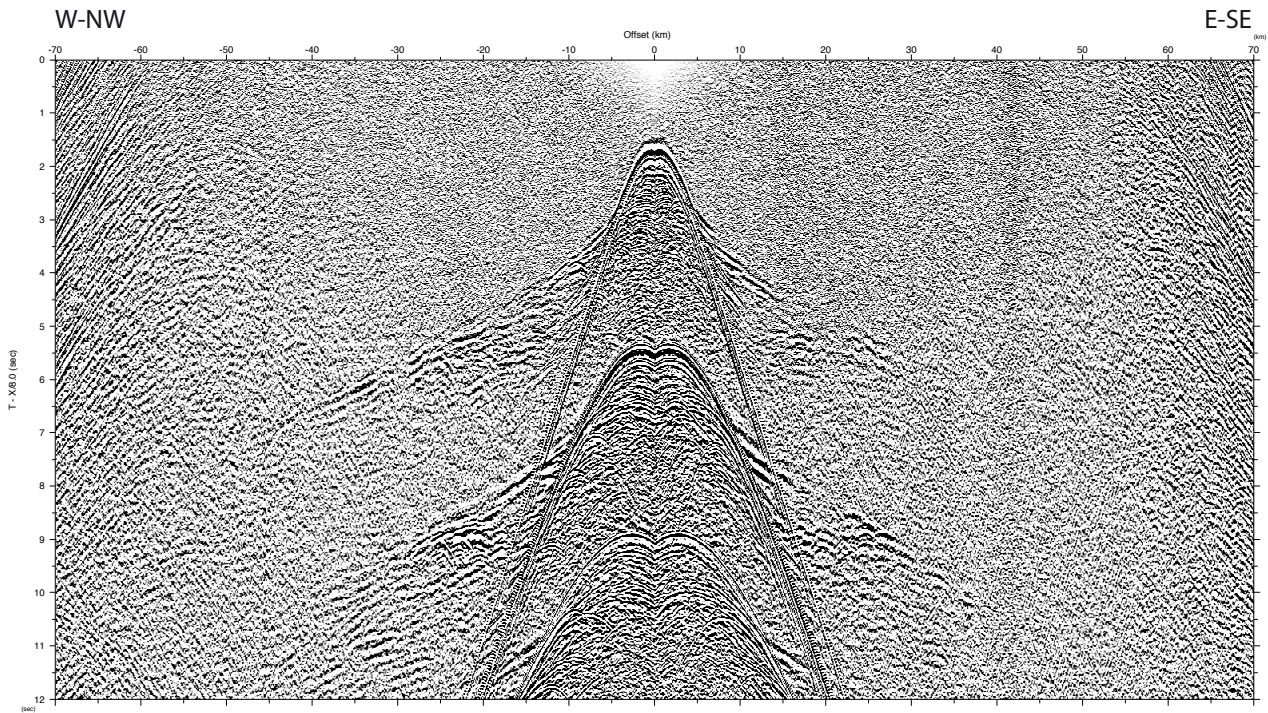
MSM 71 Profile P01 Record Section OBS112

Data File: obs112.1.sgy



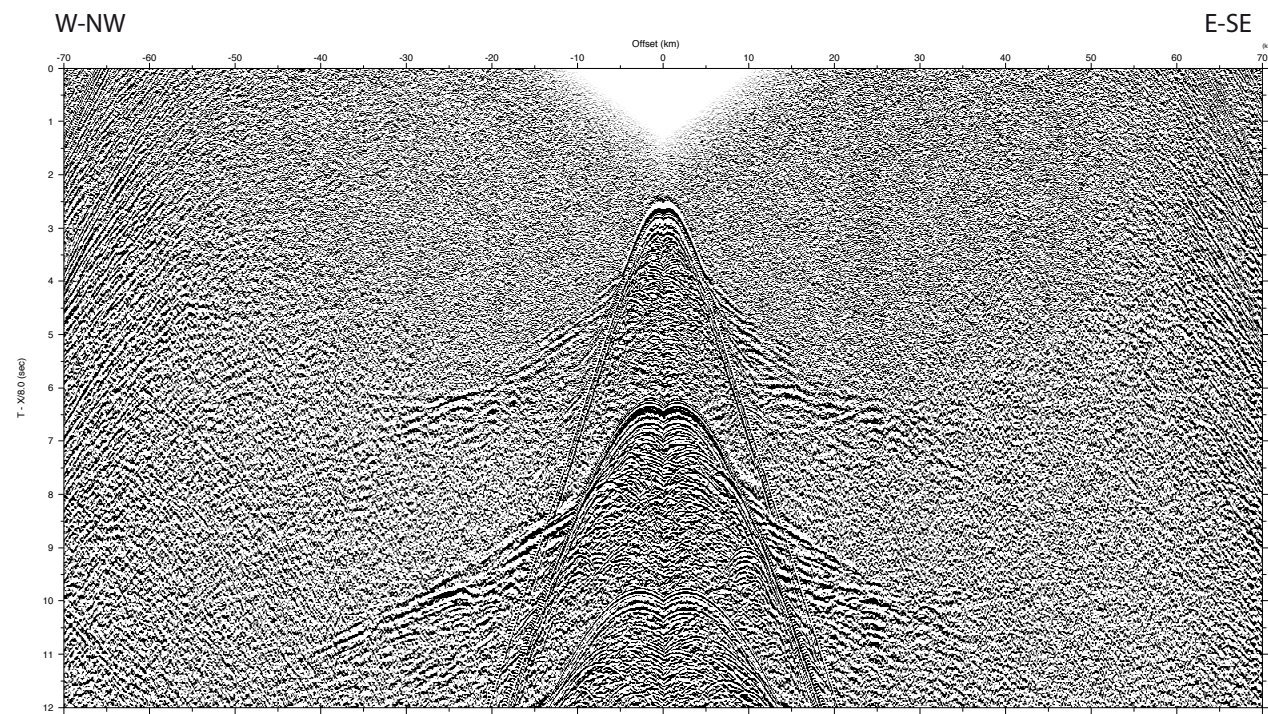
MSM 71 Profile P01 Record Section OBS113

Data File: obs113.1.sgy



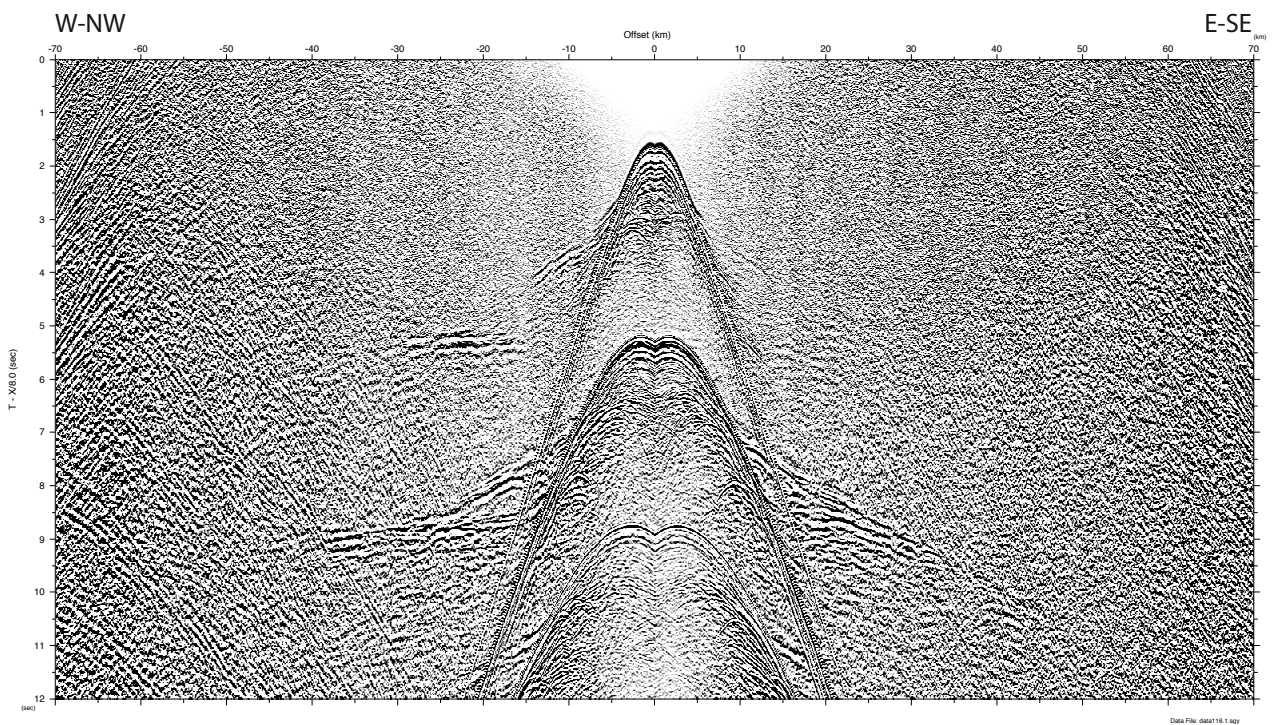
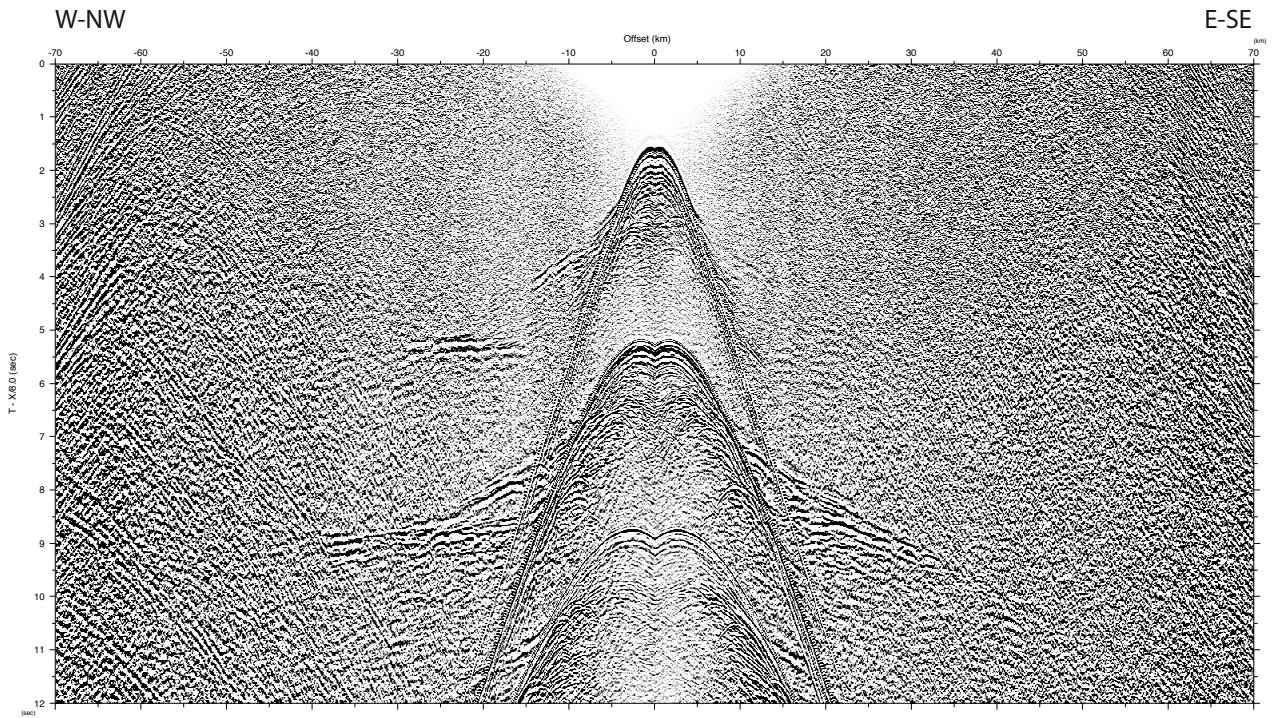
MSM 71 Profile P01 Record Section OBS114

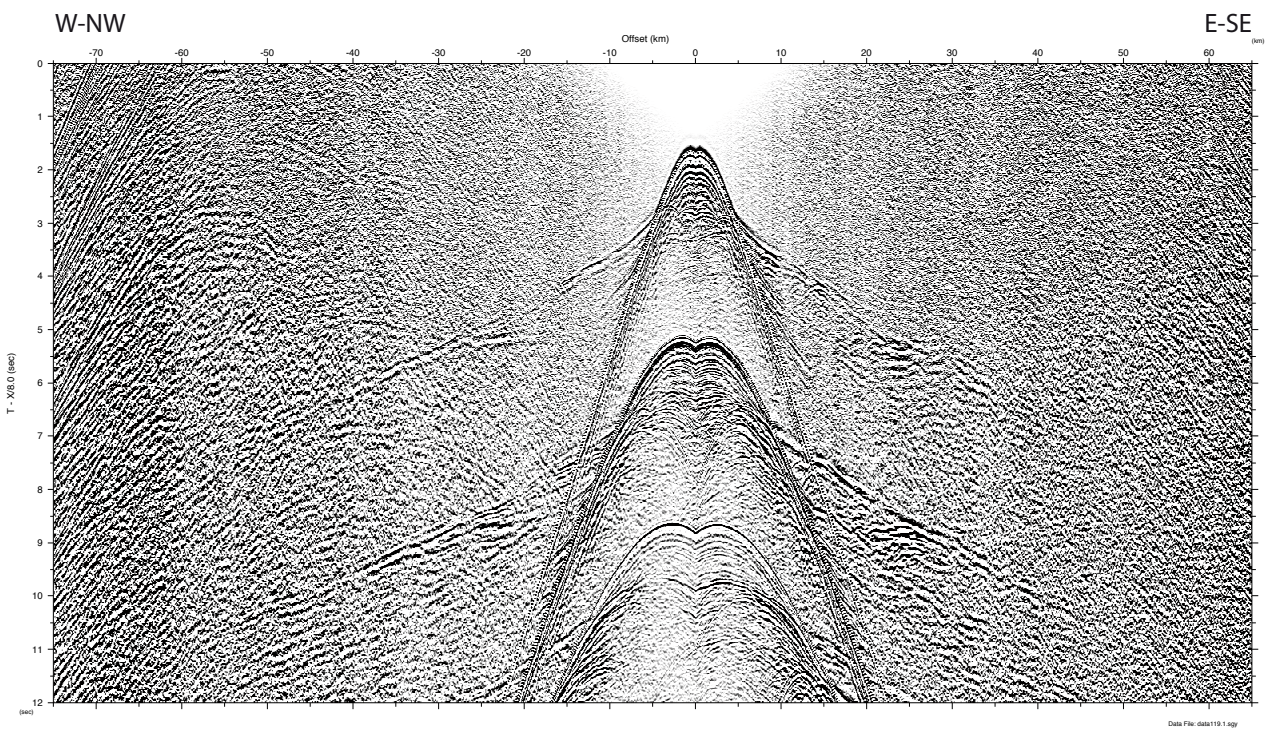
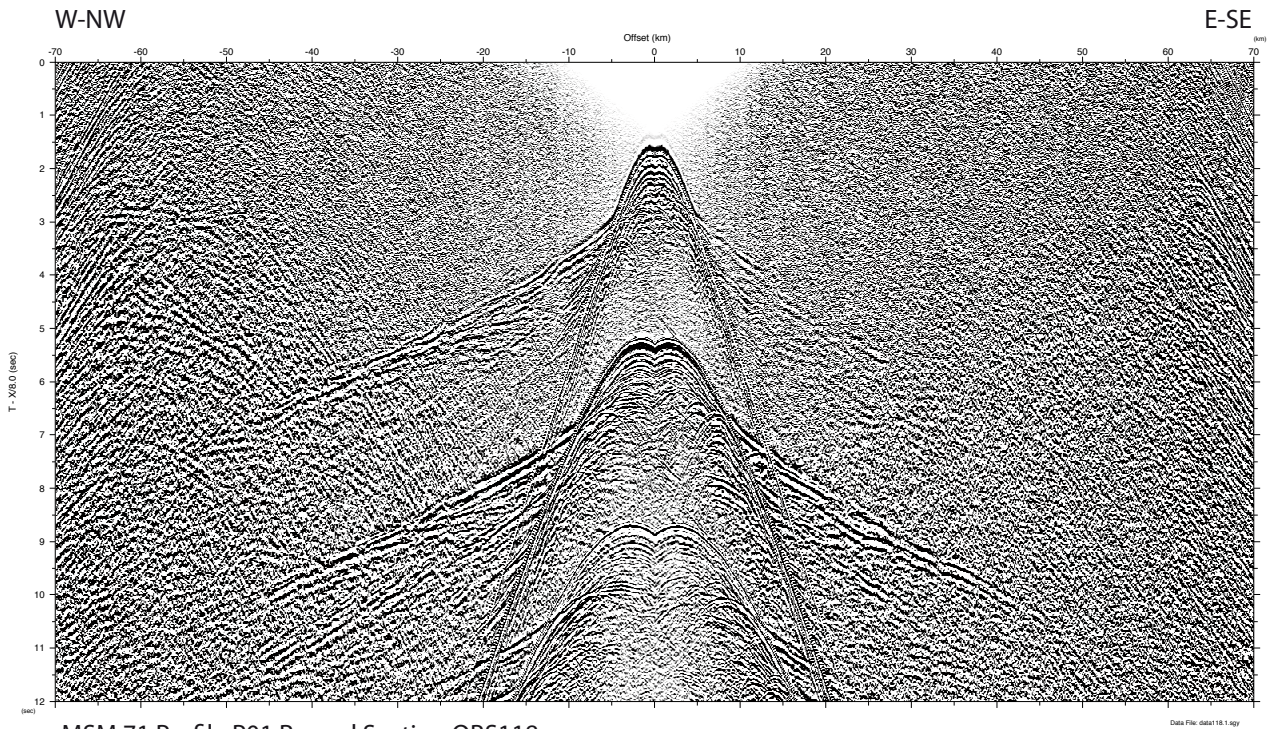
Data File: obs114.1.gp

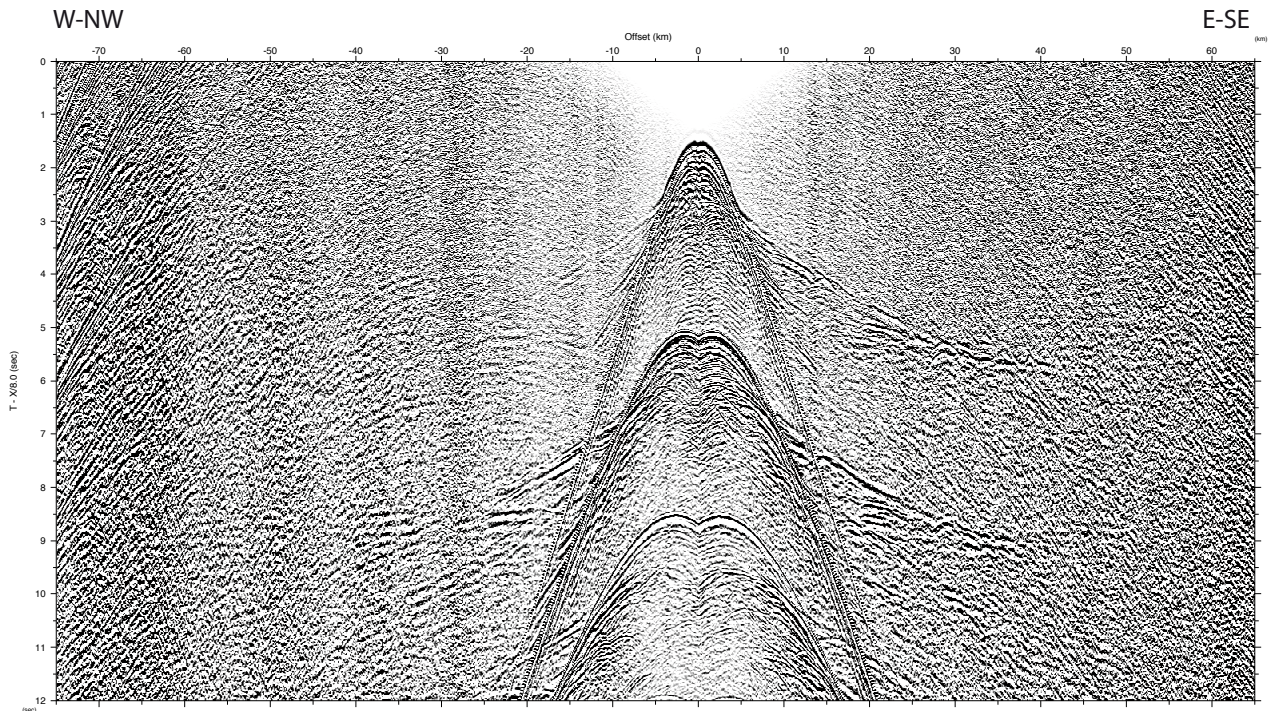


MSM 71 Profile P01 Record Section OBS115

Data File: obs115.1.gp

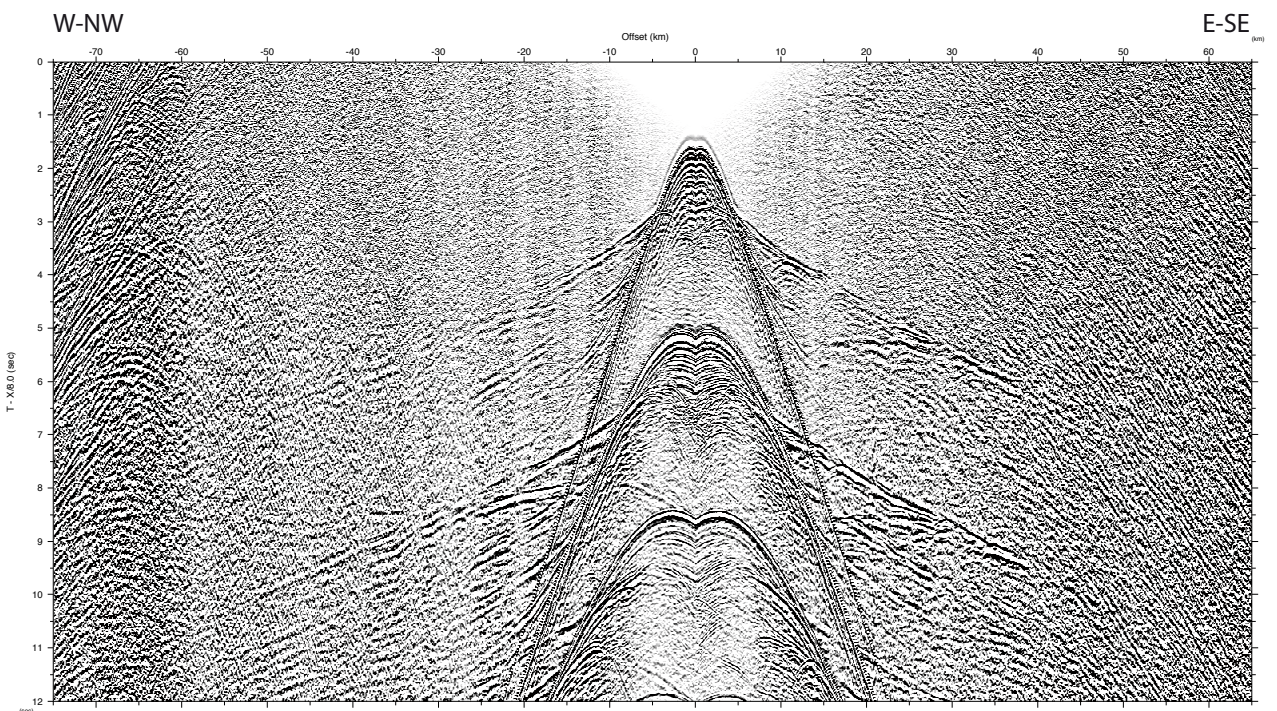






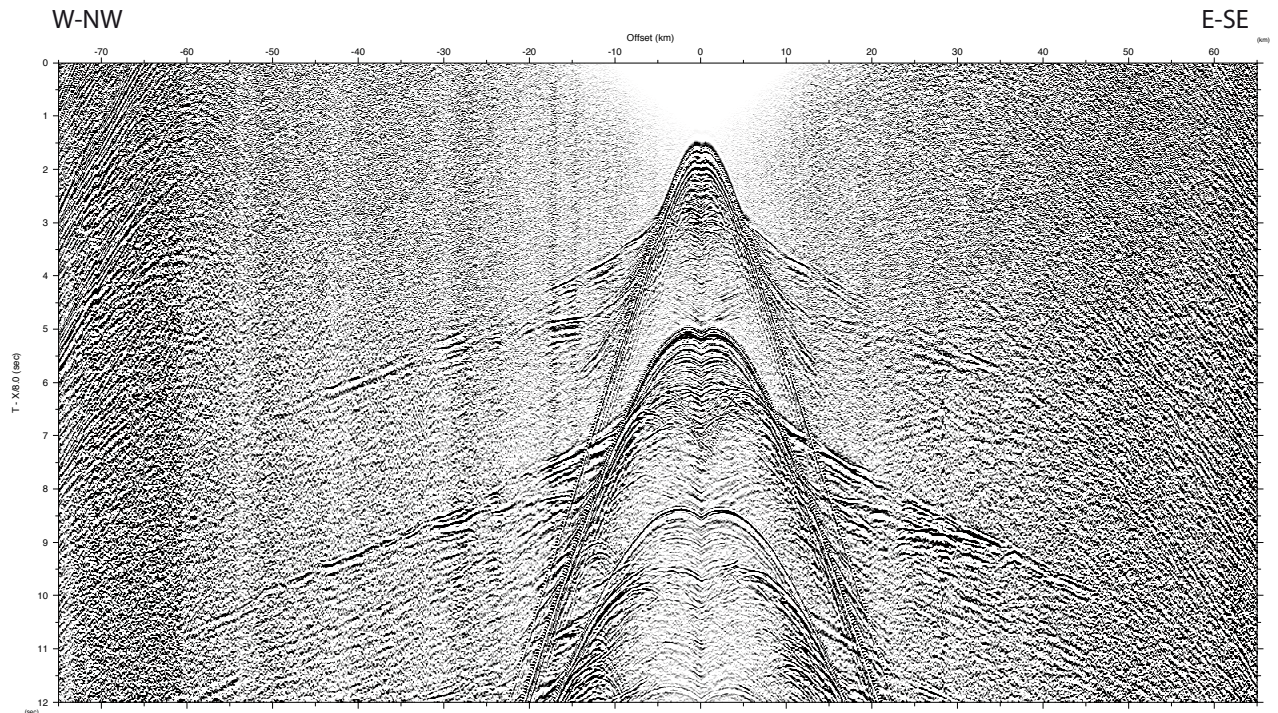
MSM 71 Profile P01 Record Section OBS121

Data File: obs121.1.sgy



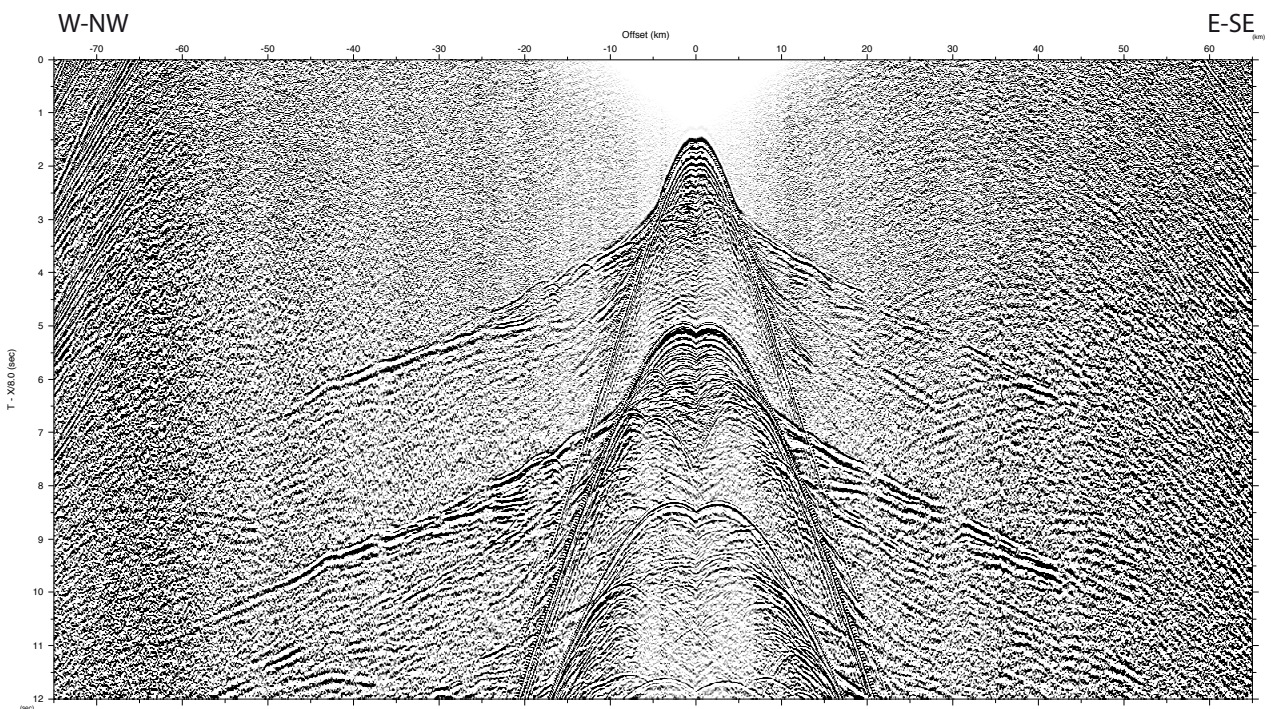
MSM 71 Profile P01 Record Section OBS123

Data File: obs123.1.sgy



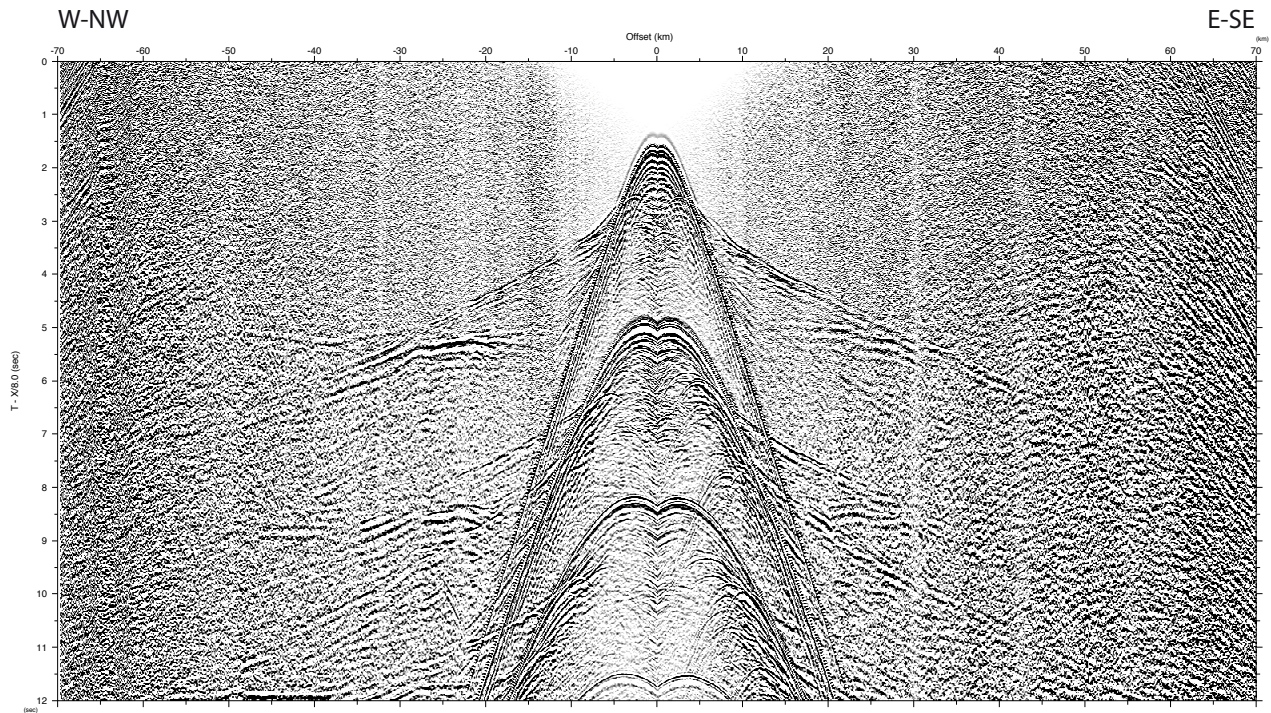
MSM 71 Profile P01 Record Section OBS124

Data File: obs124.1.sgy

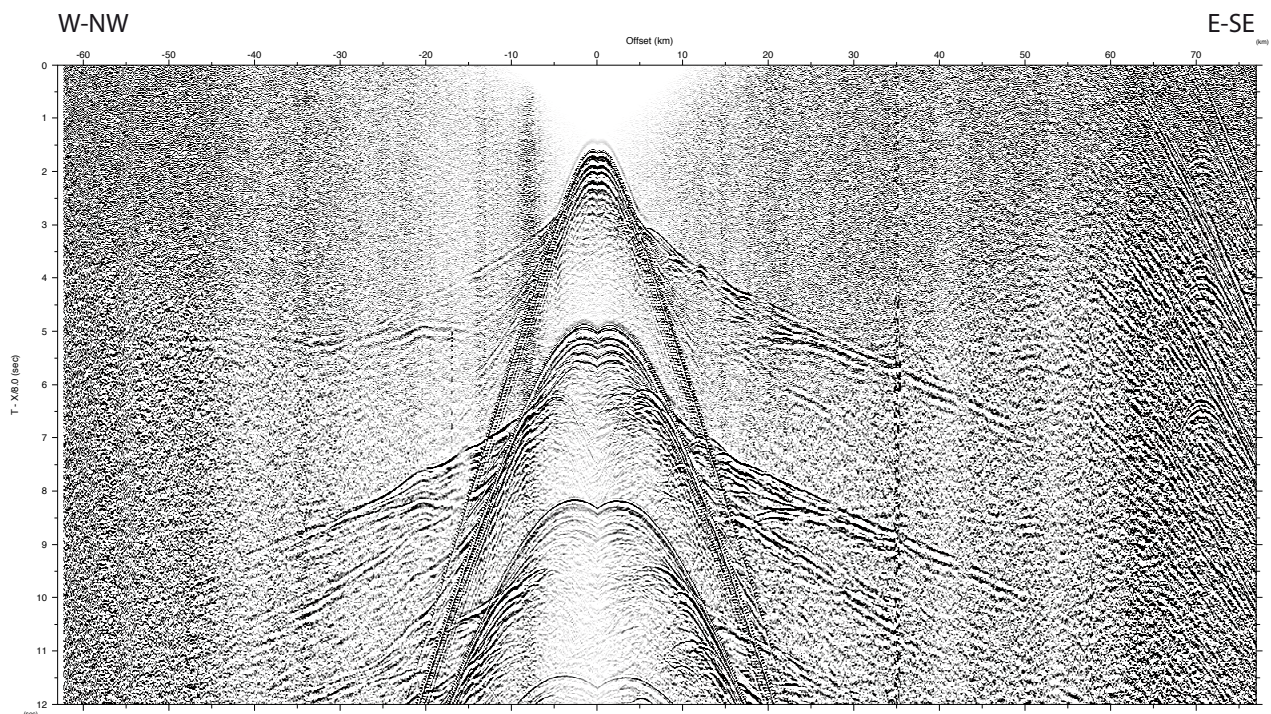


MSM 71 Profile P01 Record Section OBS125

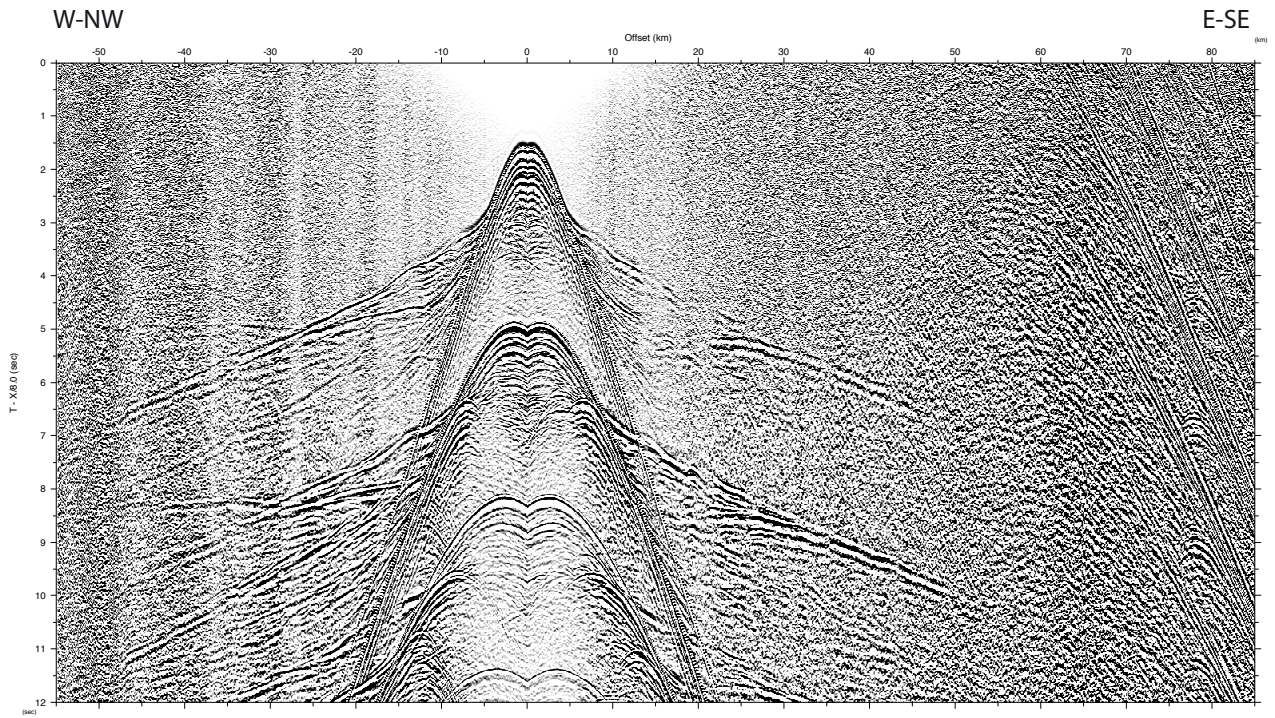
Data File: obs125.1.sgy



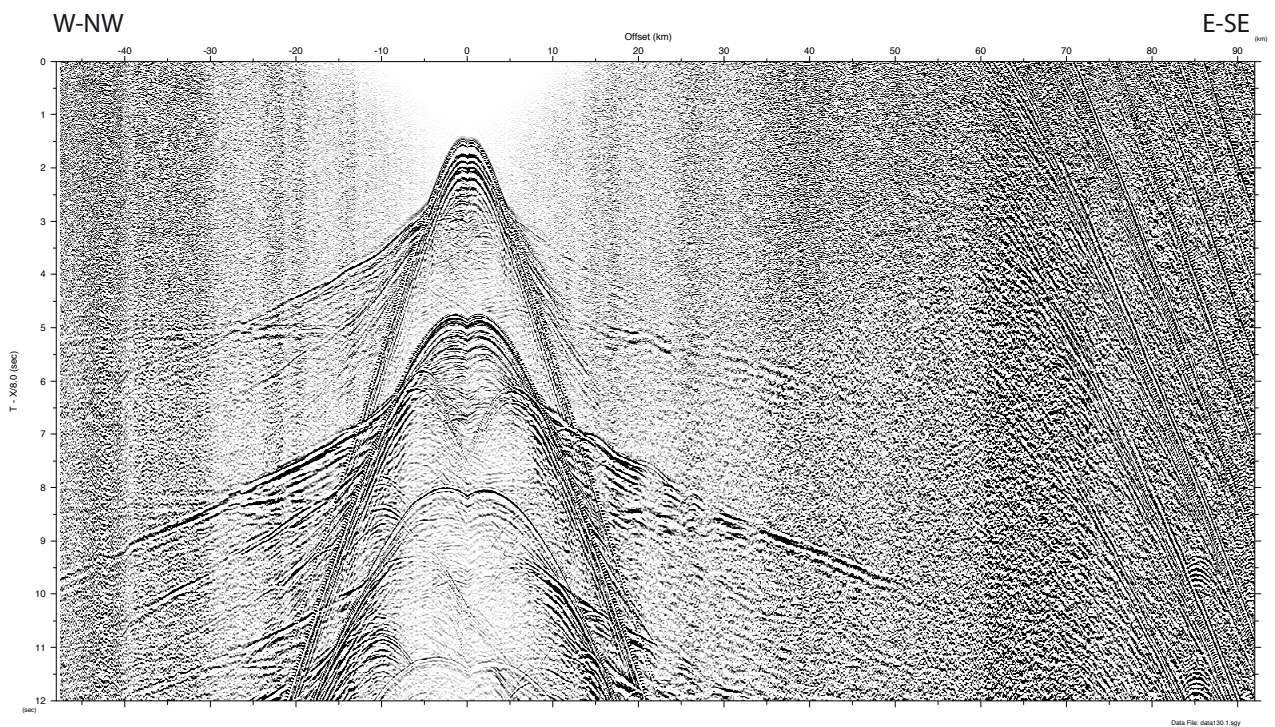
MSM 71 Profile P01 Record Section OBS127



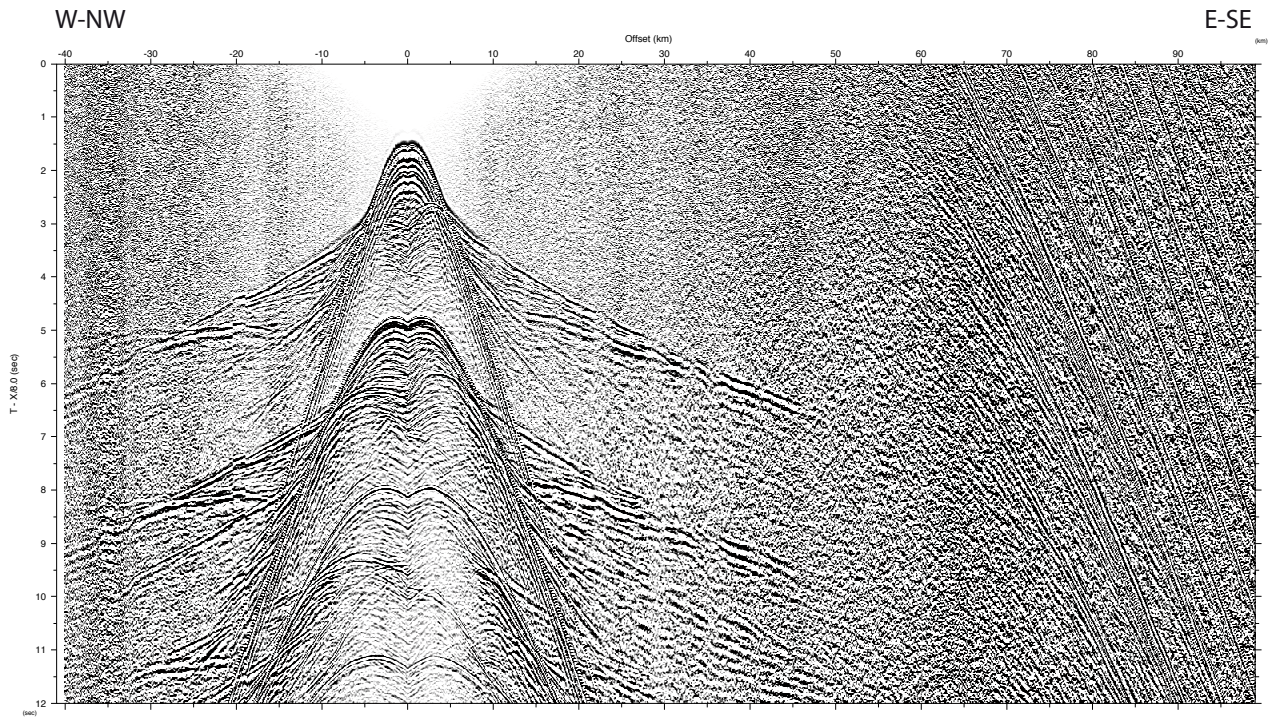
MSM 71 Profile P01 Record Section OBS128



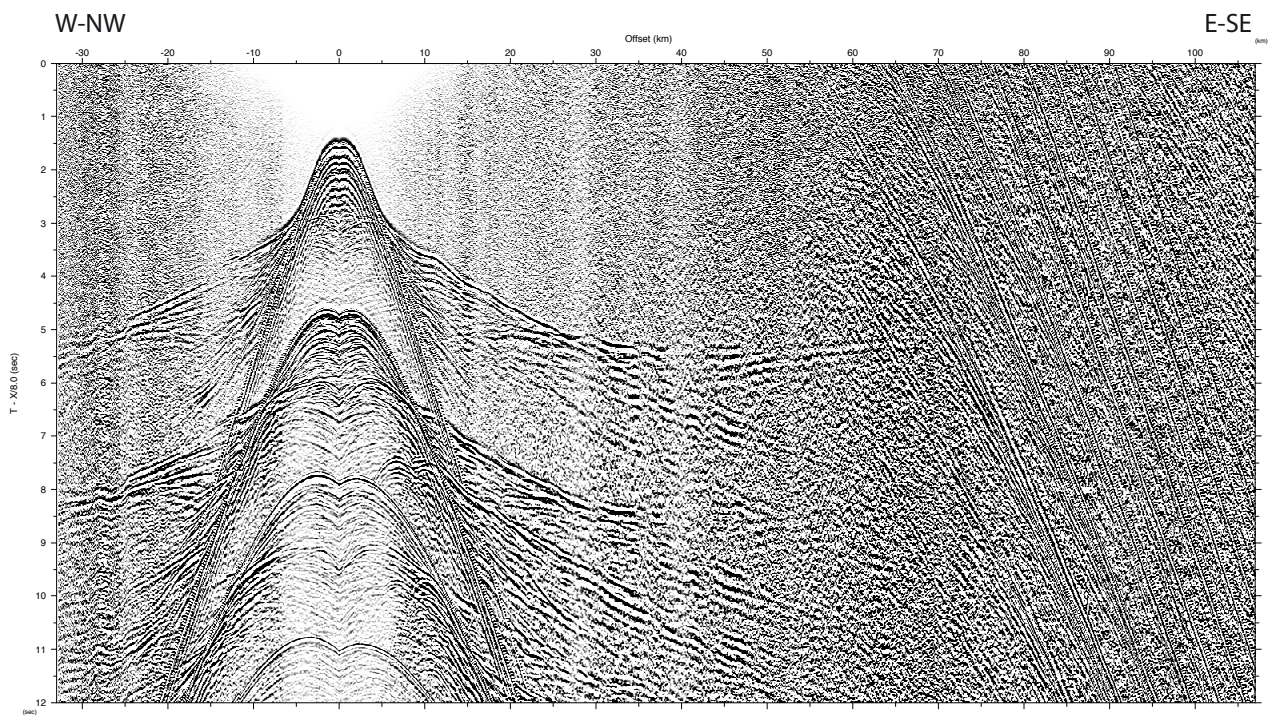
MSM 71 Profile P01 Record Section OBS129



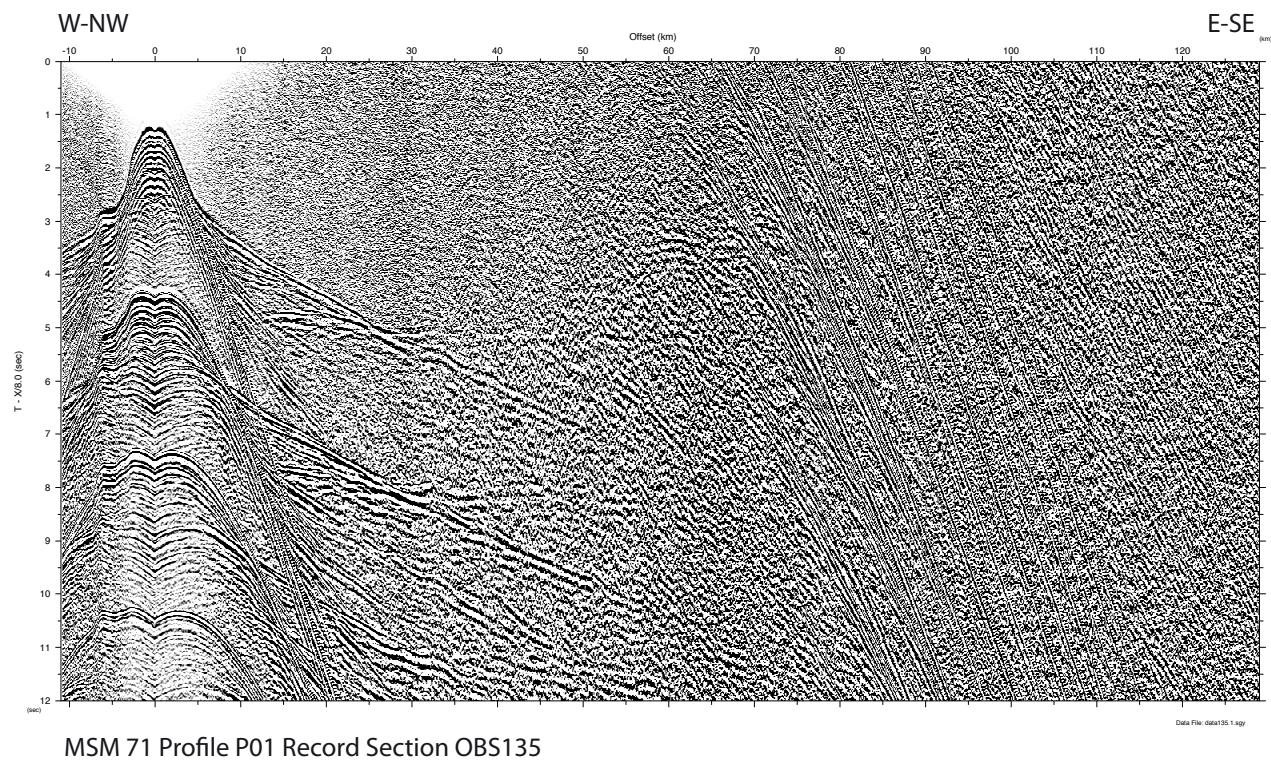
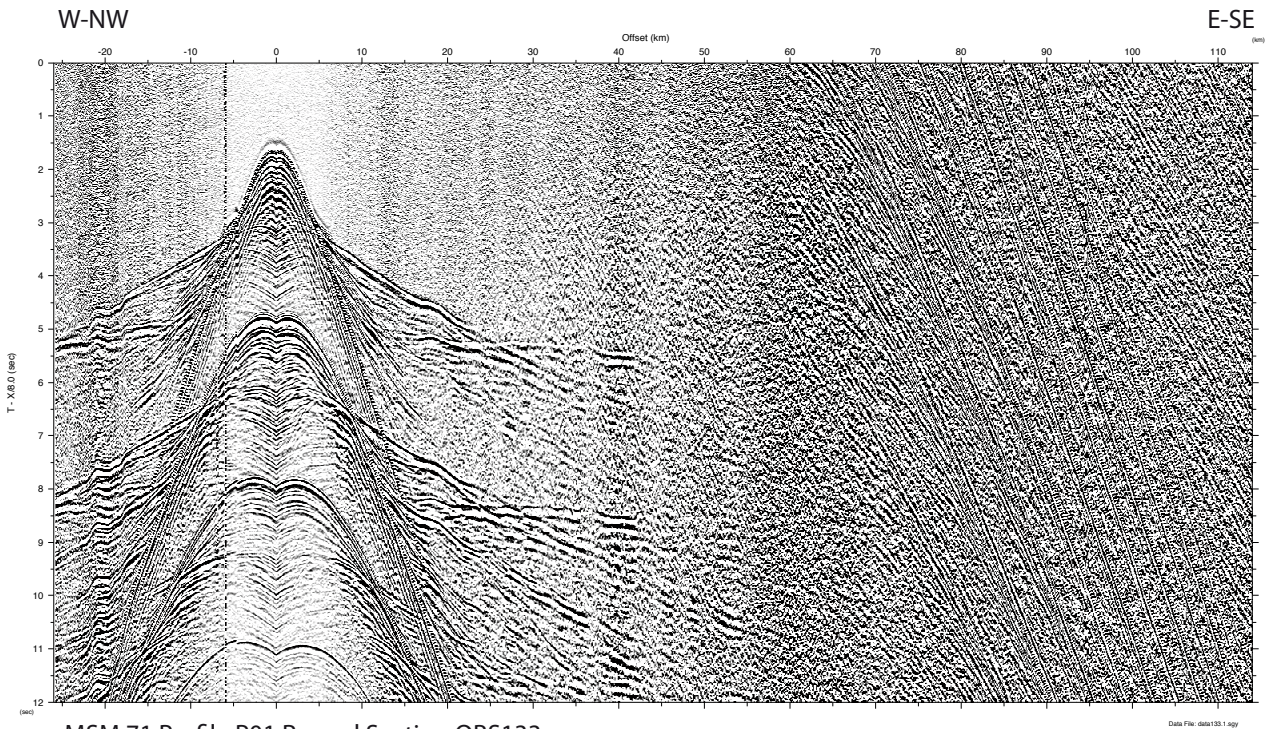
MSM 71 Profile P01 Record Section OBS130



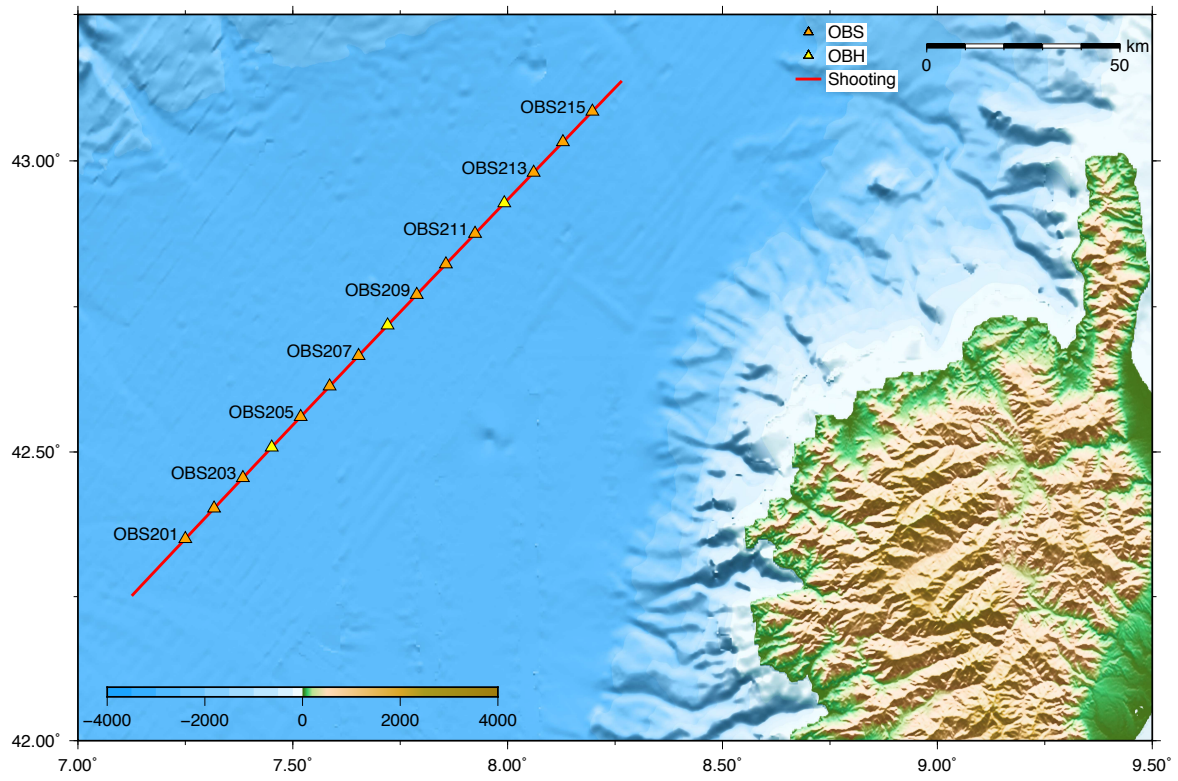
MSM 71 Profile P01 Record Section OBS131

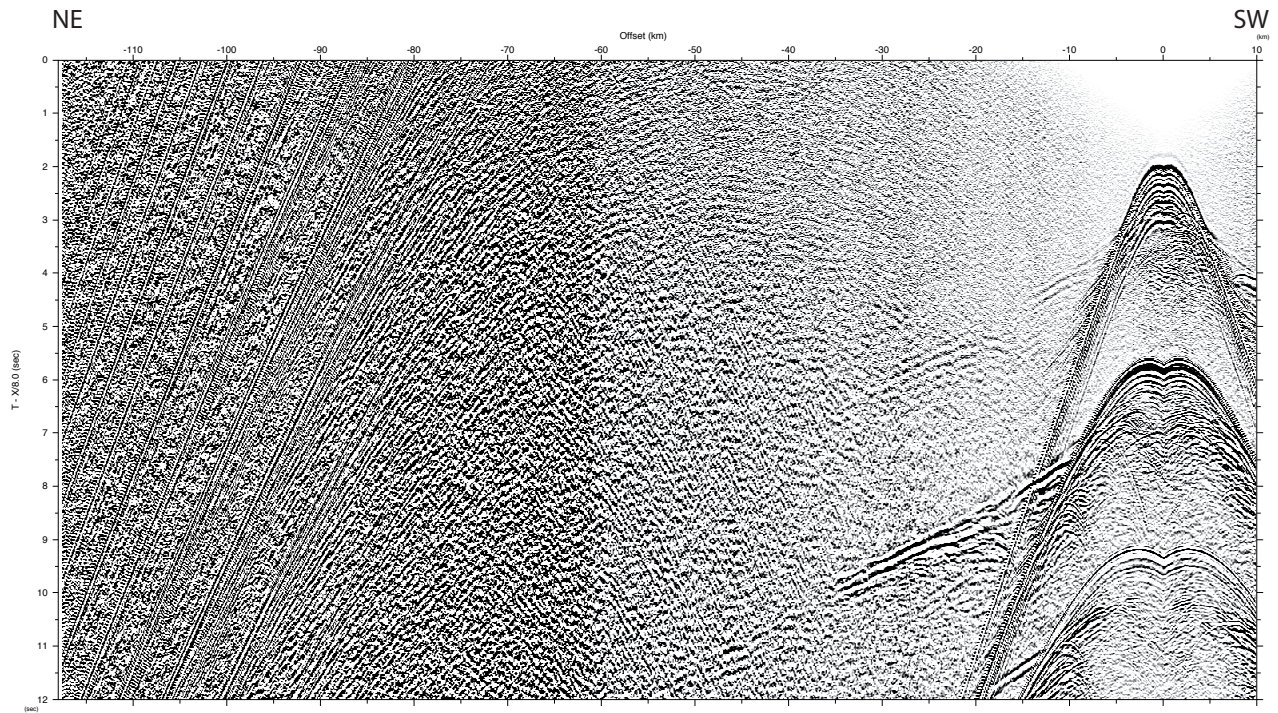


MSM 71 Profile P01 Record Section OBS132

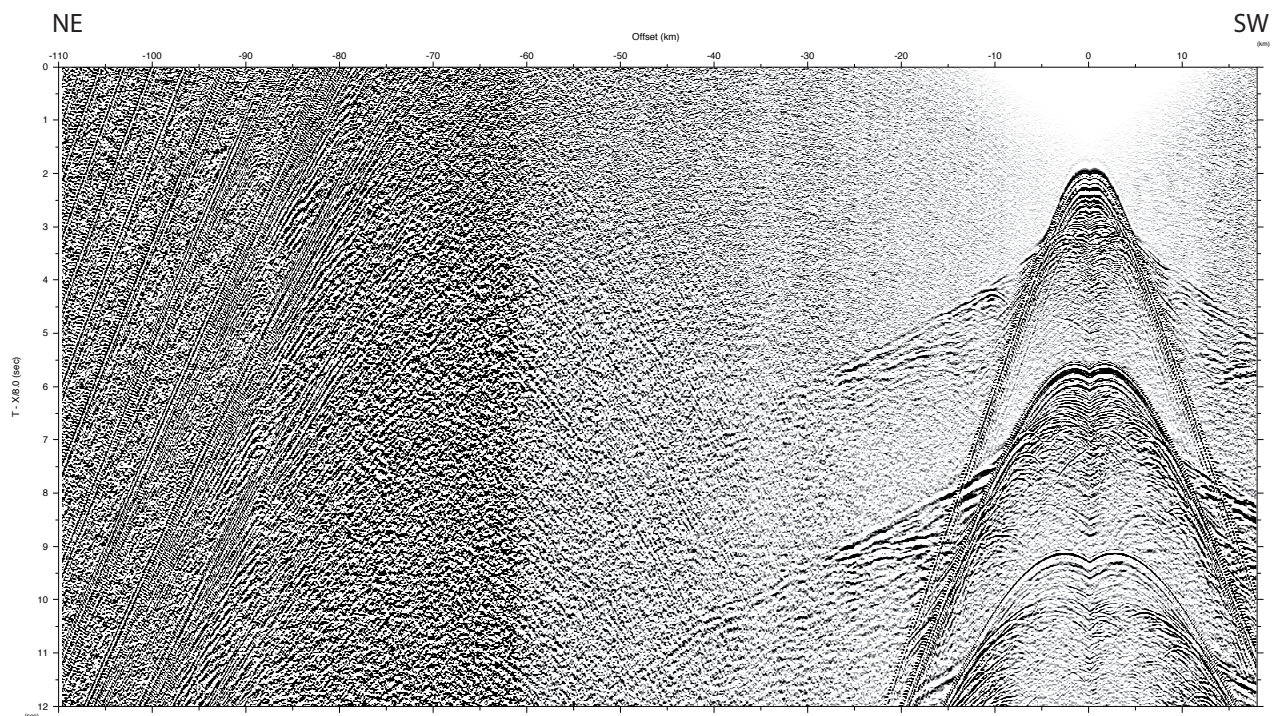


Record Sections OBS 201 – OBS 215, Profile P02

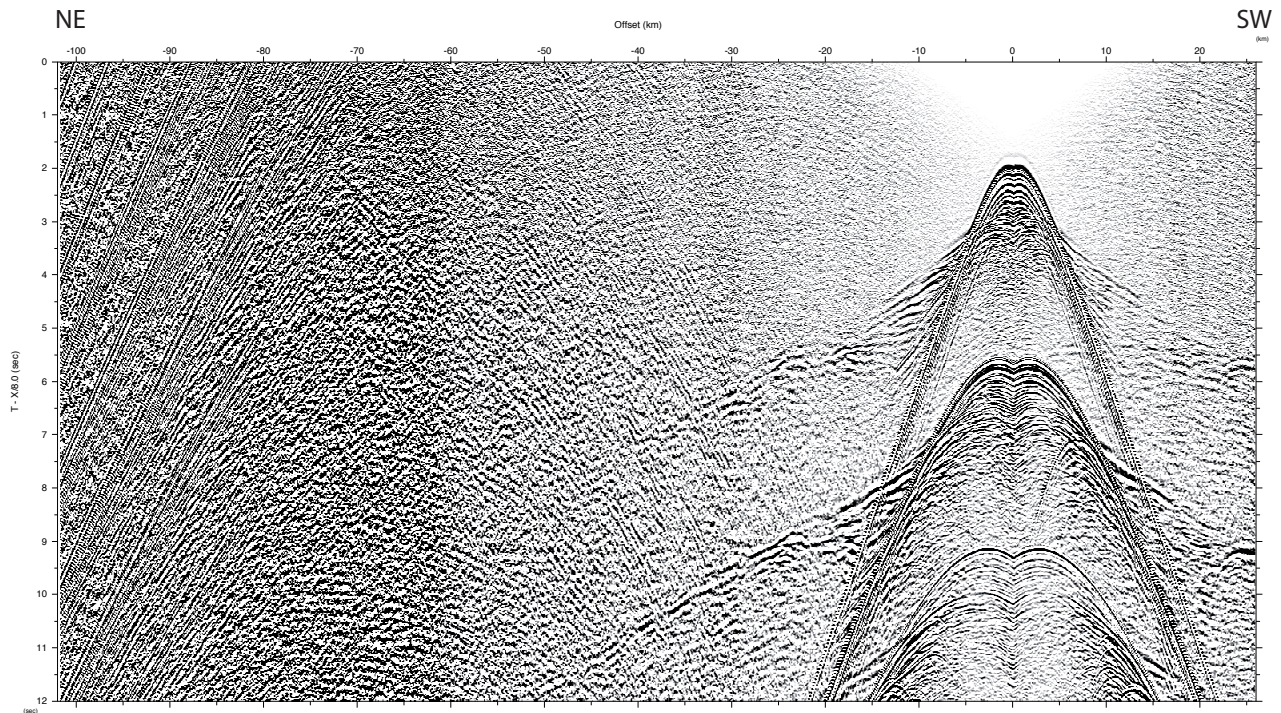




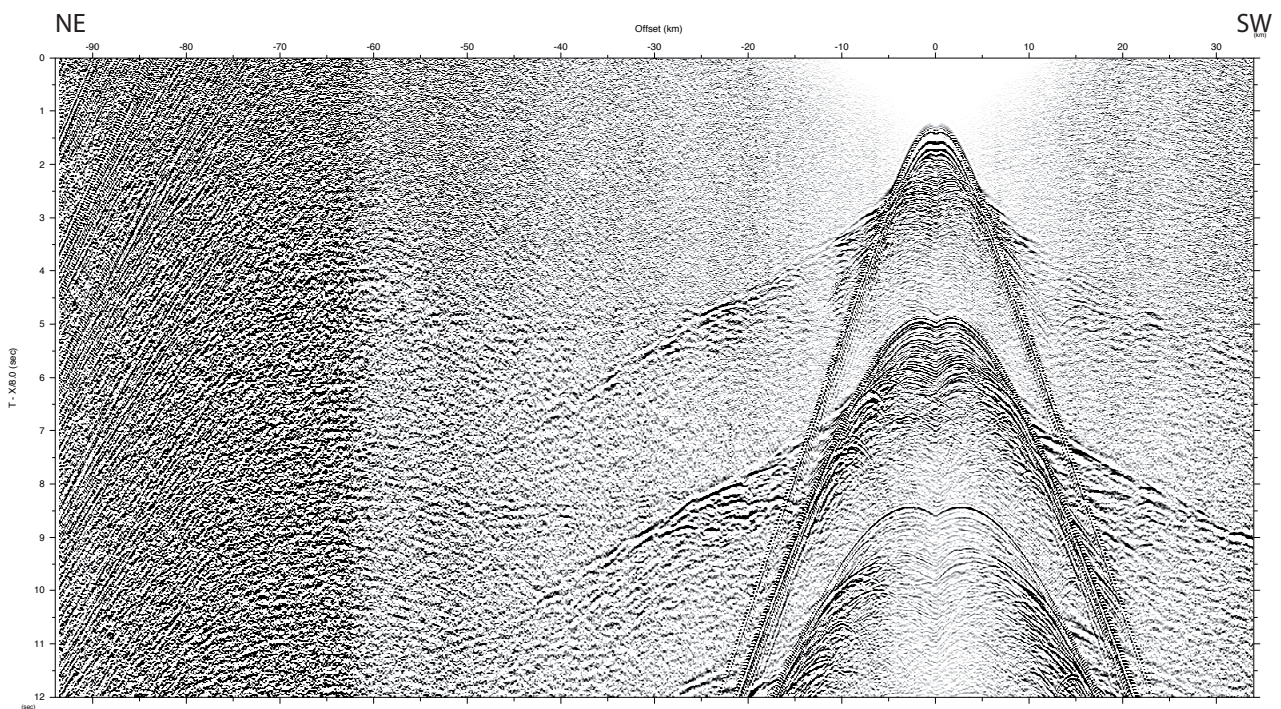
MSM 71 Profile P02 Record Section OBS201



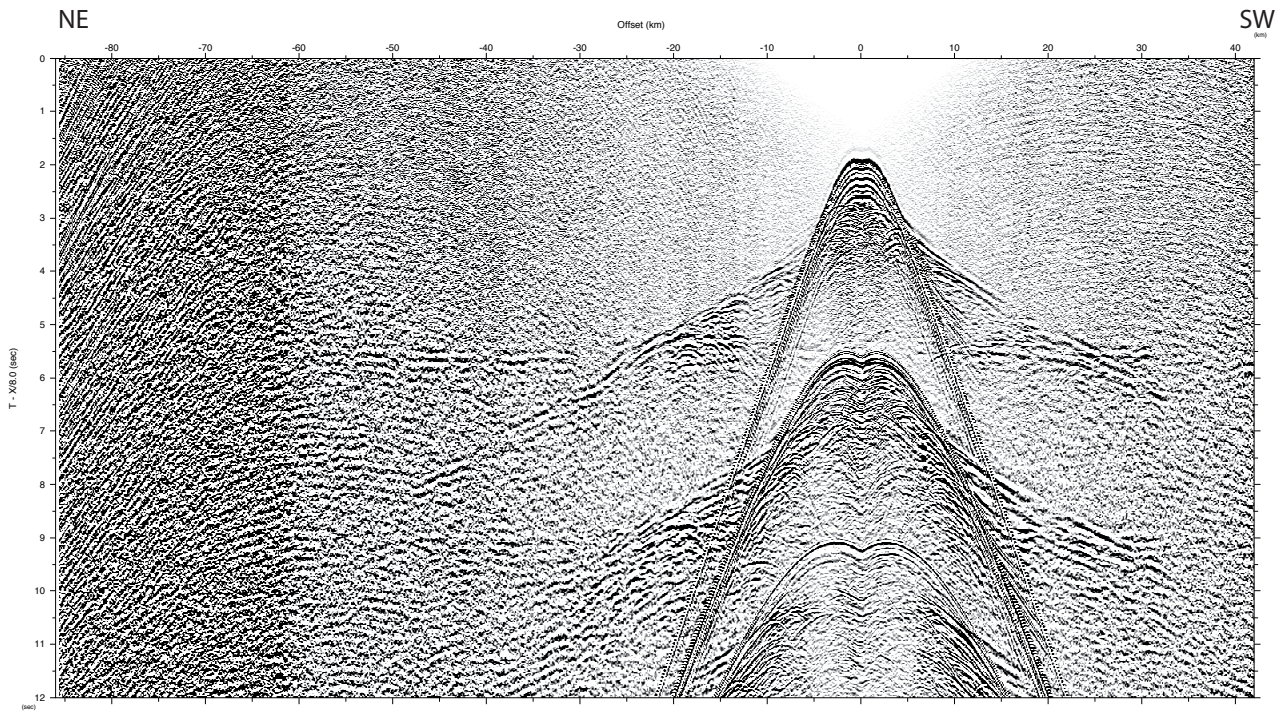
MSM 71 Profile P02 Record Section OBS202



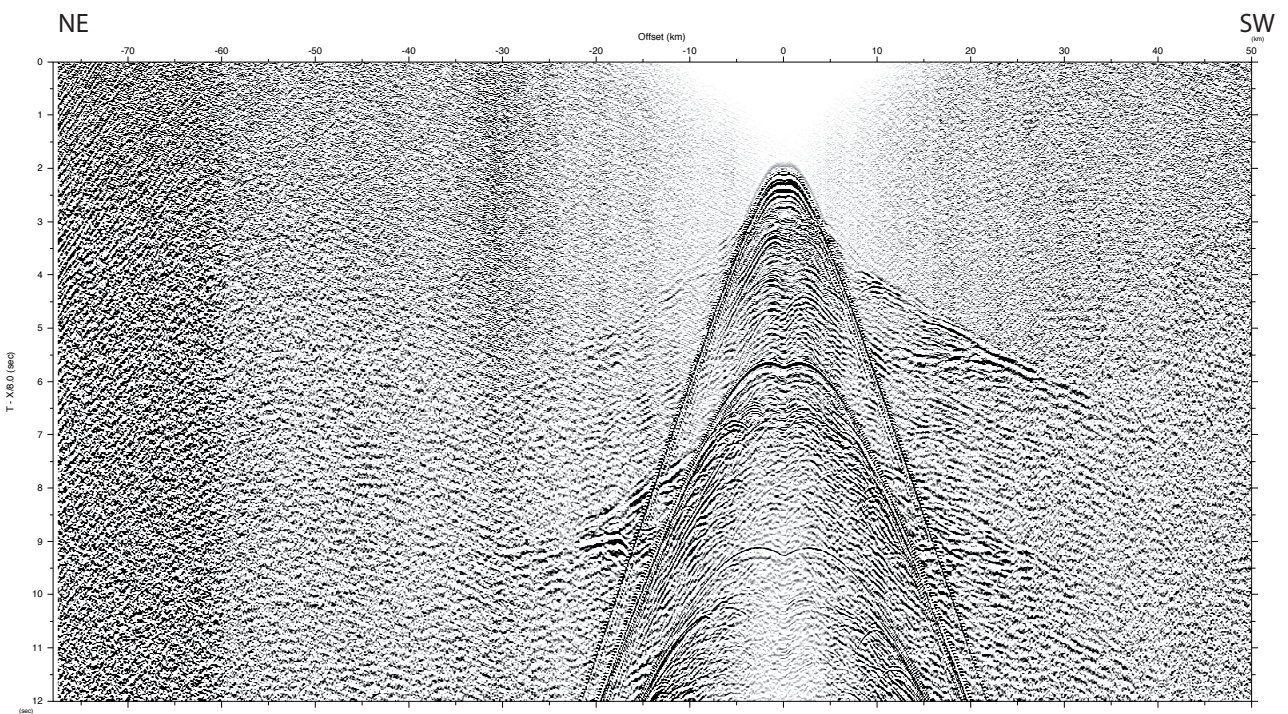
MSM 71 Profile P02 Record Section OBS203



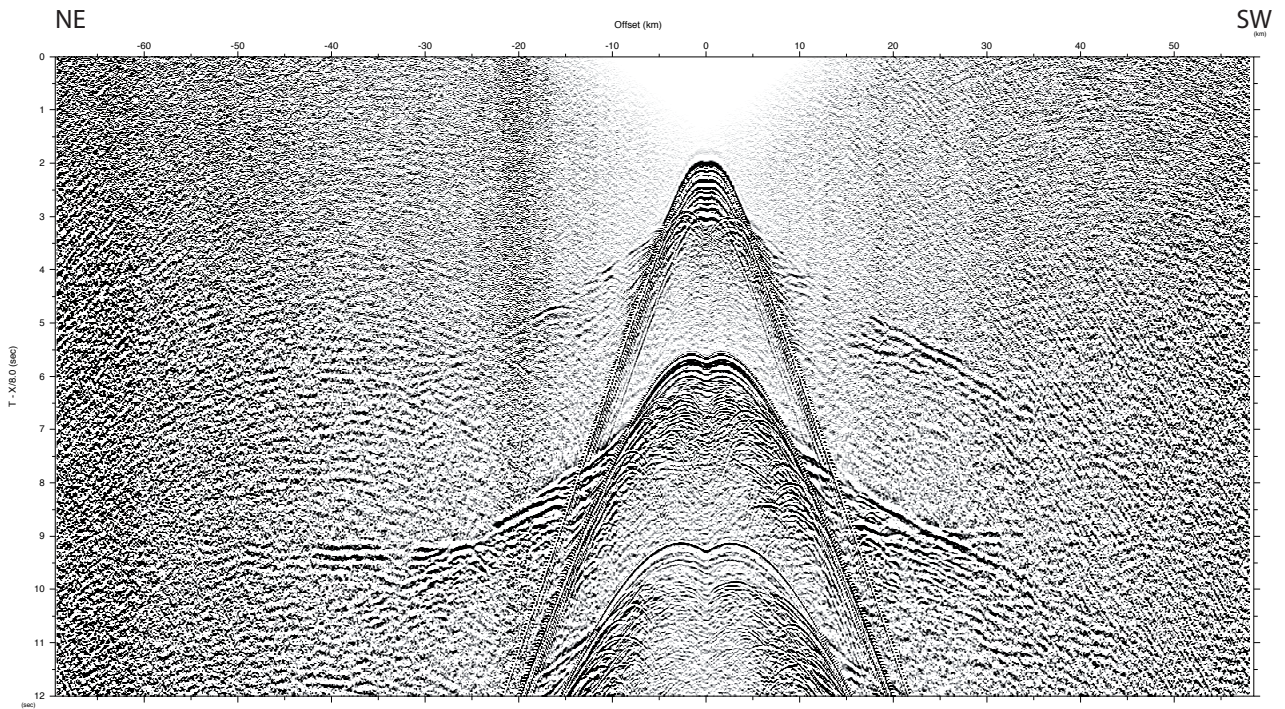
MSM 71 Profile P02 Record Section OBH204



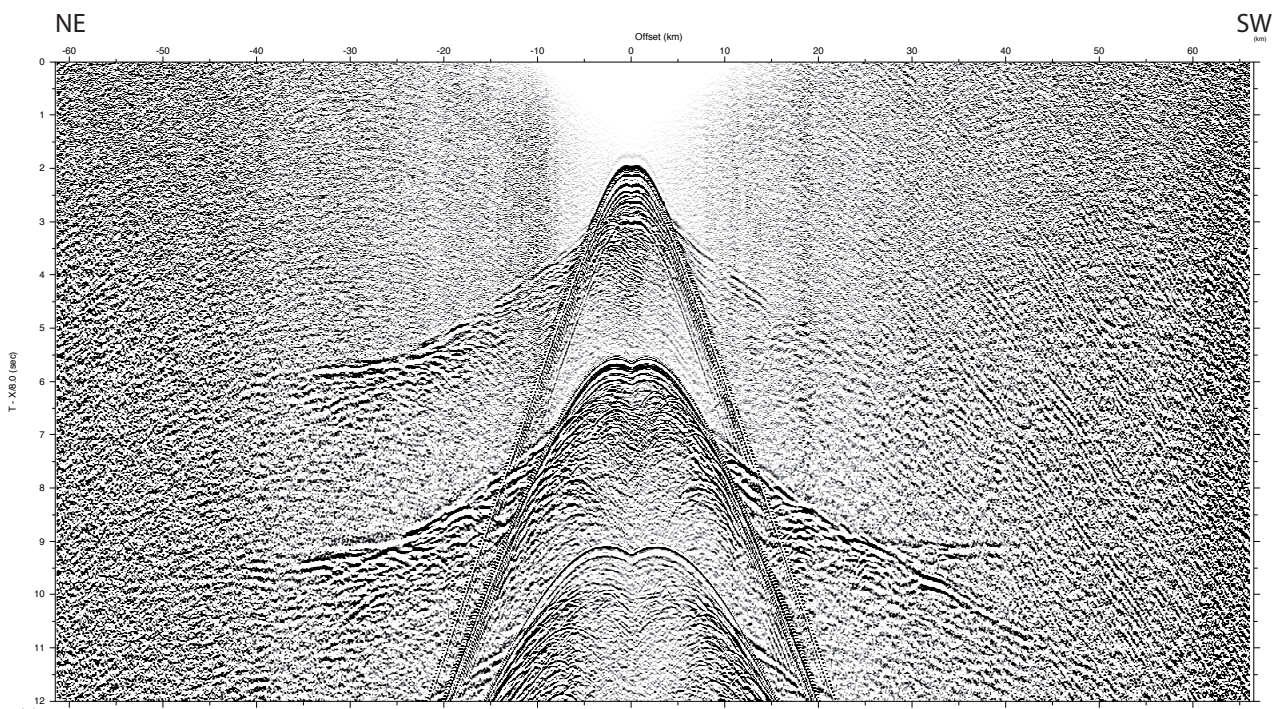
MSM 71 Profile P02 Record Section OBS205



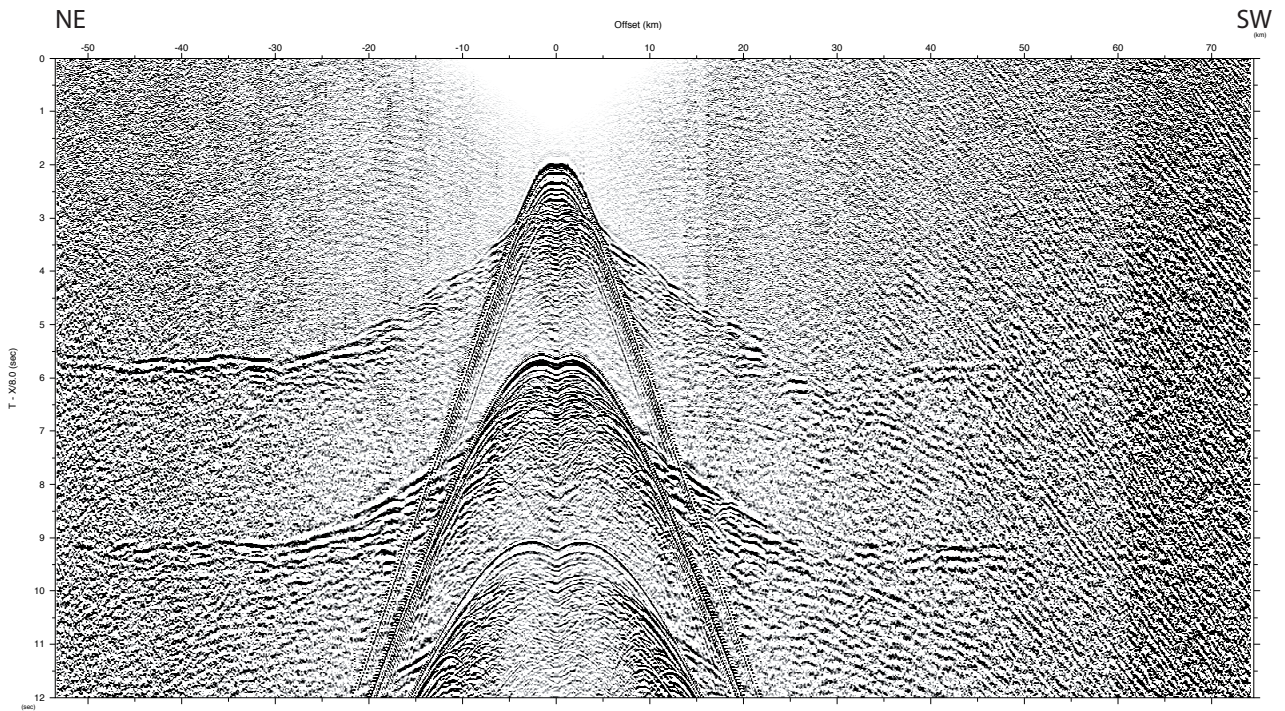
MSM 71 Profile P02 Record Section OBS206



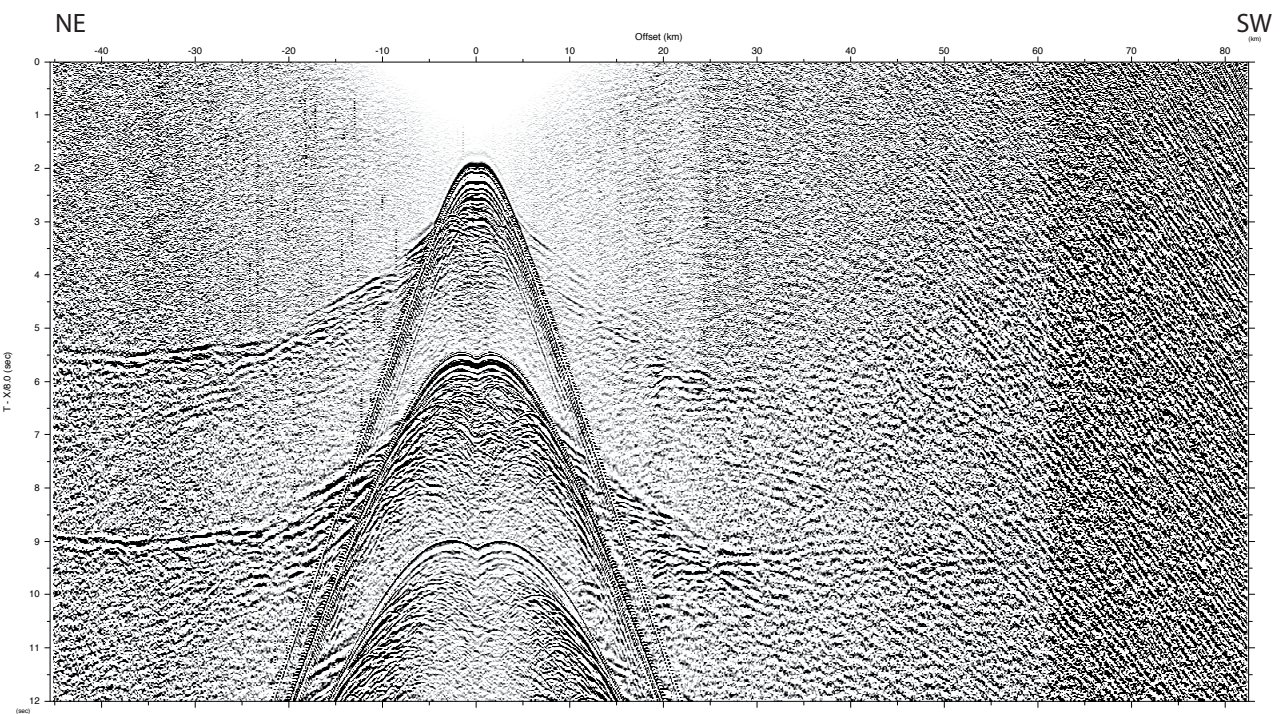
MSM 71 Profile P02 Record Section OBS207



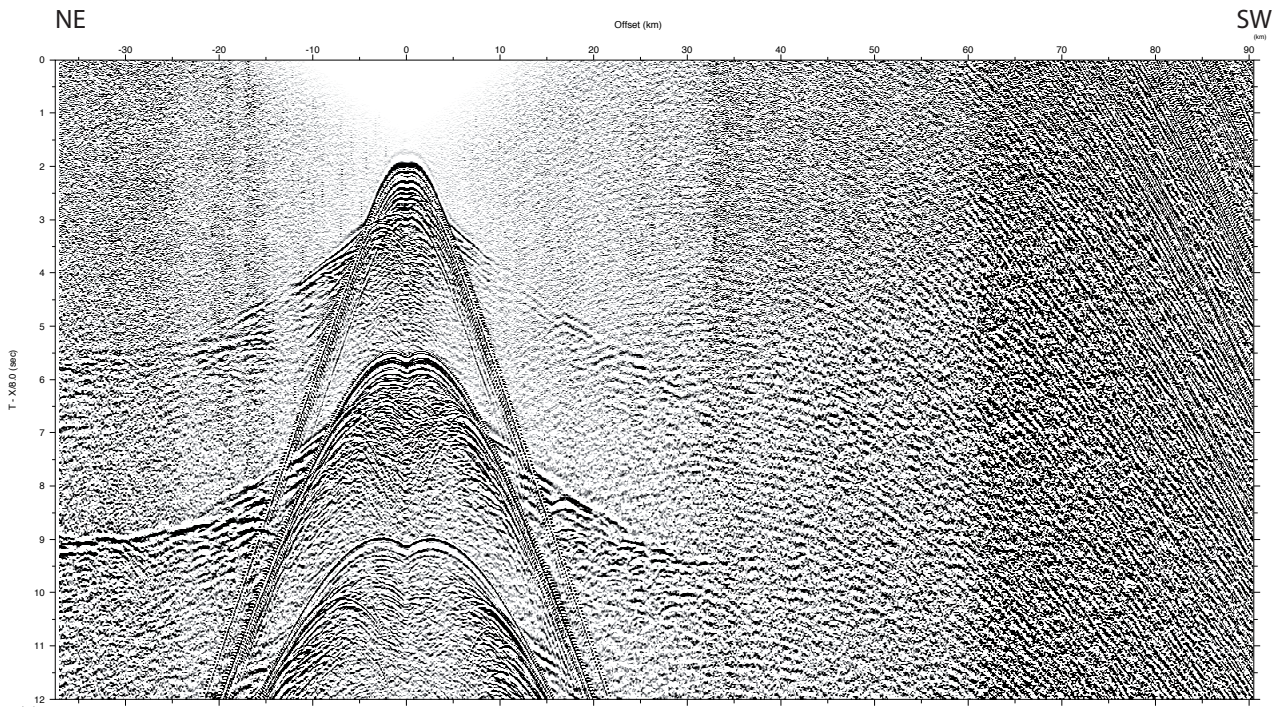
MSM 71 Profile P02 Record Section OBH208



MSM 71 Profile P02 Record Section OBS209

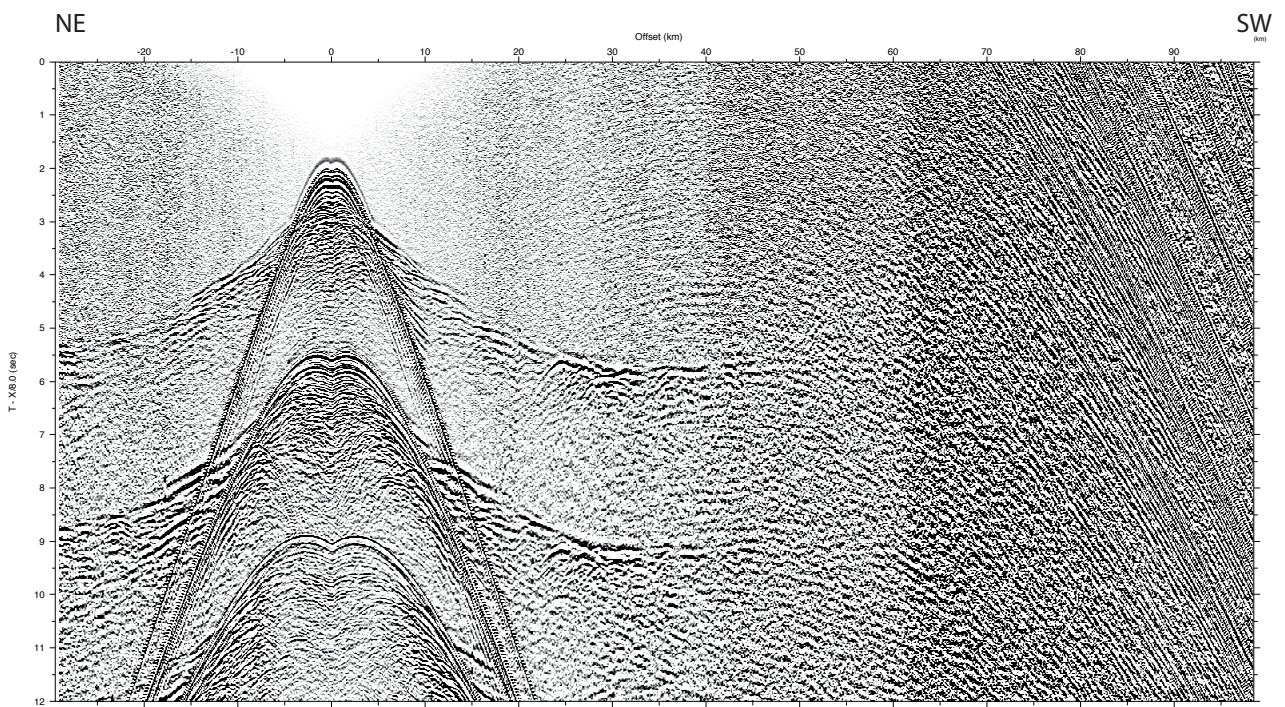


MSM 71 Profile P02 Record Section OBS210



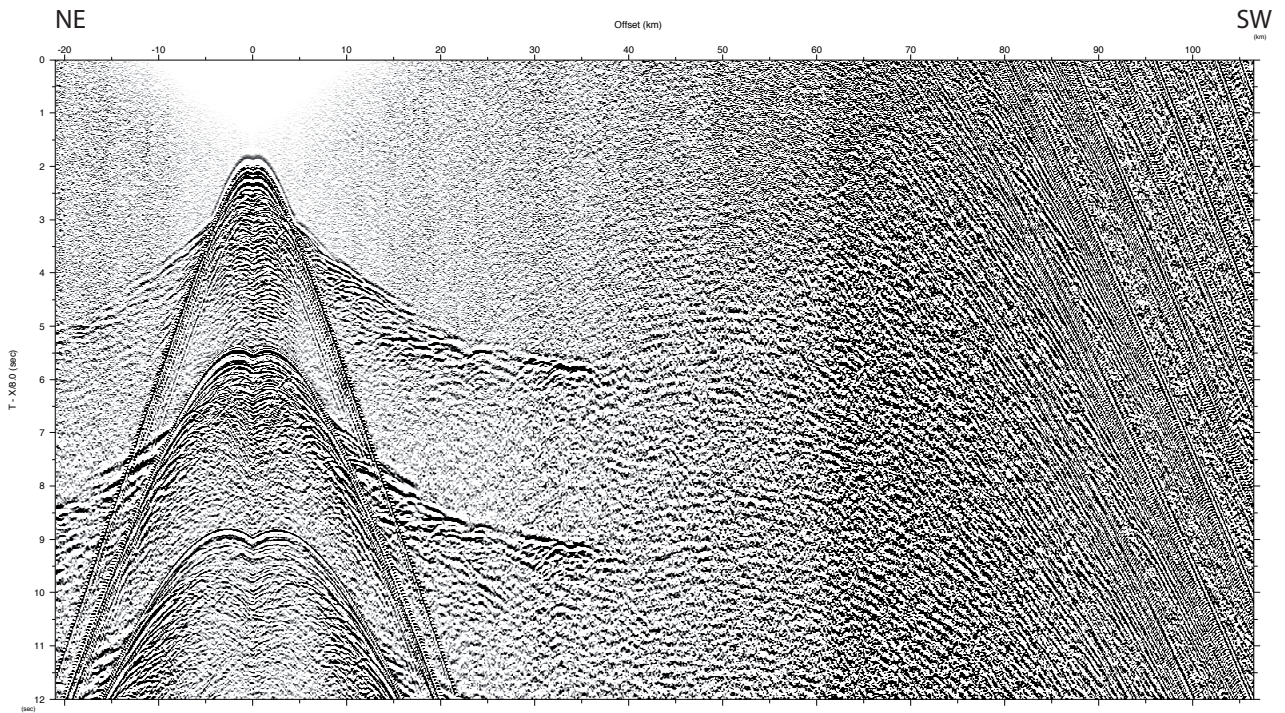
MSM 71 Profile P02 Record Section OBS211

Data File: obs011.1.sgy

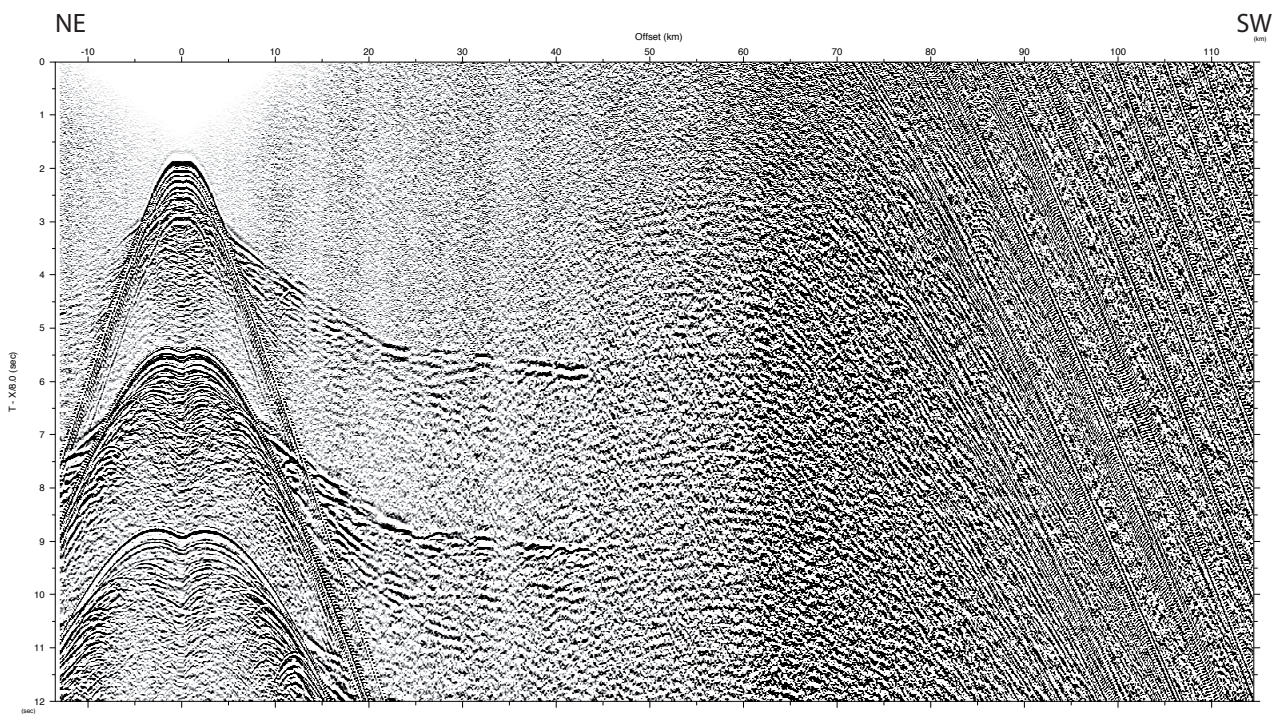


MSM 71 Profile P02 Record Section OBH212

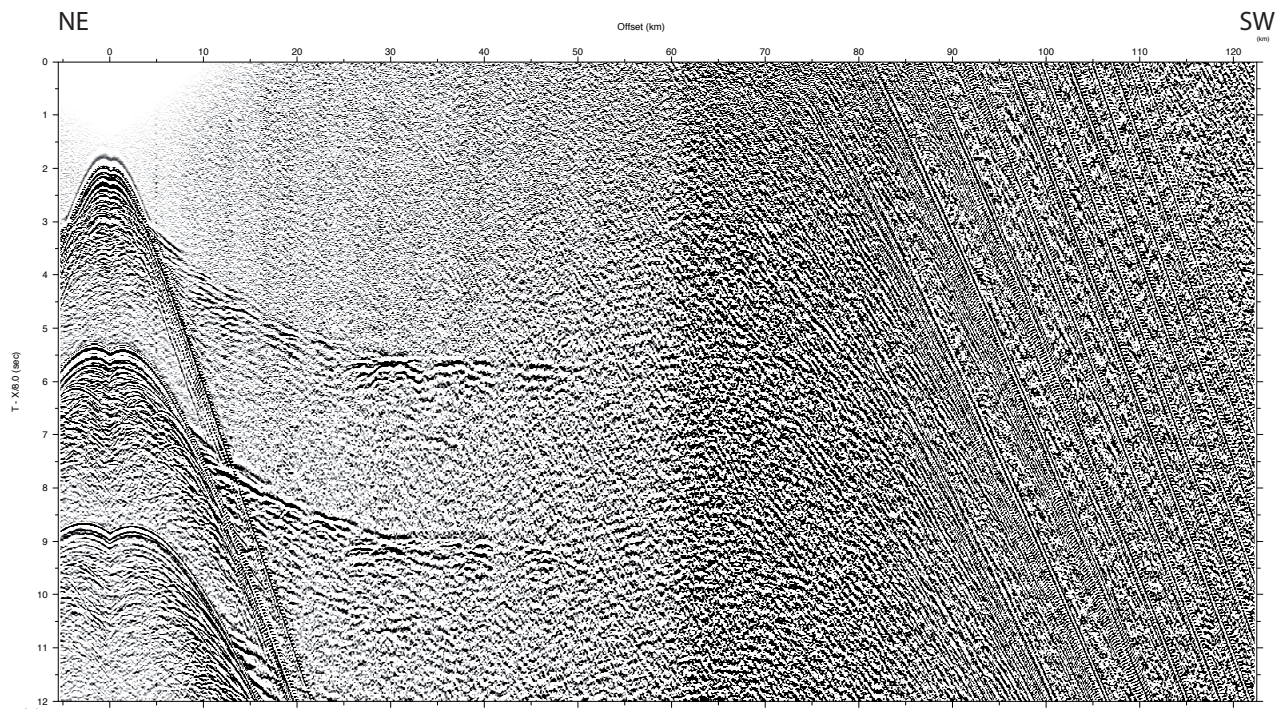
Data File: obs012.1.sgy



MSM 71 Profile P02 Record Section OBS213



MSM 71 Profile P02 Record Section OBS214



MSM 71 Profile P02 Record Section OBS215

Data File: dml015.1.gij



Das GEOMAR Helmholtz-Zentrum für Ozeanforschung Kiel
ist Mitglied der Helmholtz-Gemeinschaft
Deutscher Forschungszentren e.V.

The GEOMAR Helmholtz Centre for Ocean Research Kiel
is a member of the Helmholtz Association of
German Research Centres

Helmholtz-Zentrum für Ozeanforschung Kiel / Helmholtz Centre for Ocean Research Kiel

GEOMAR
Dienstgebäude Westufer / West Shore Building
Düsternbrooker Weg 20
D-24105 Kiel
Germany

Helmholtz-Zentrum für Ozeanforschung Kiel / Helmholtz Centre for Ocean Research Kiel

GEOMAR
Dienstgebäude Ostufer / East Shore Building
Wischhofstr. 1-3
D-24148 Kiel
Germany

Tel.: +49 431 600-0
Fax: +49 431 600-2805
www.geomar.de