

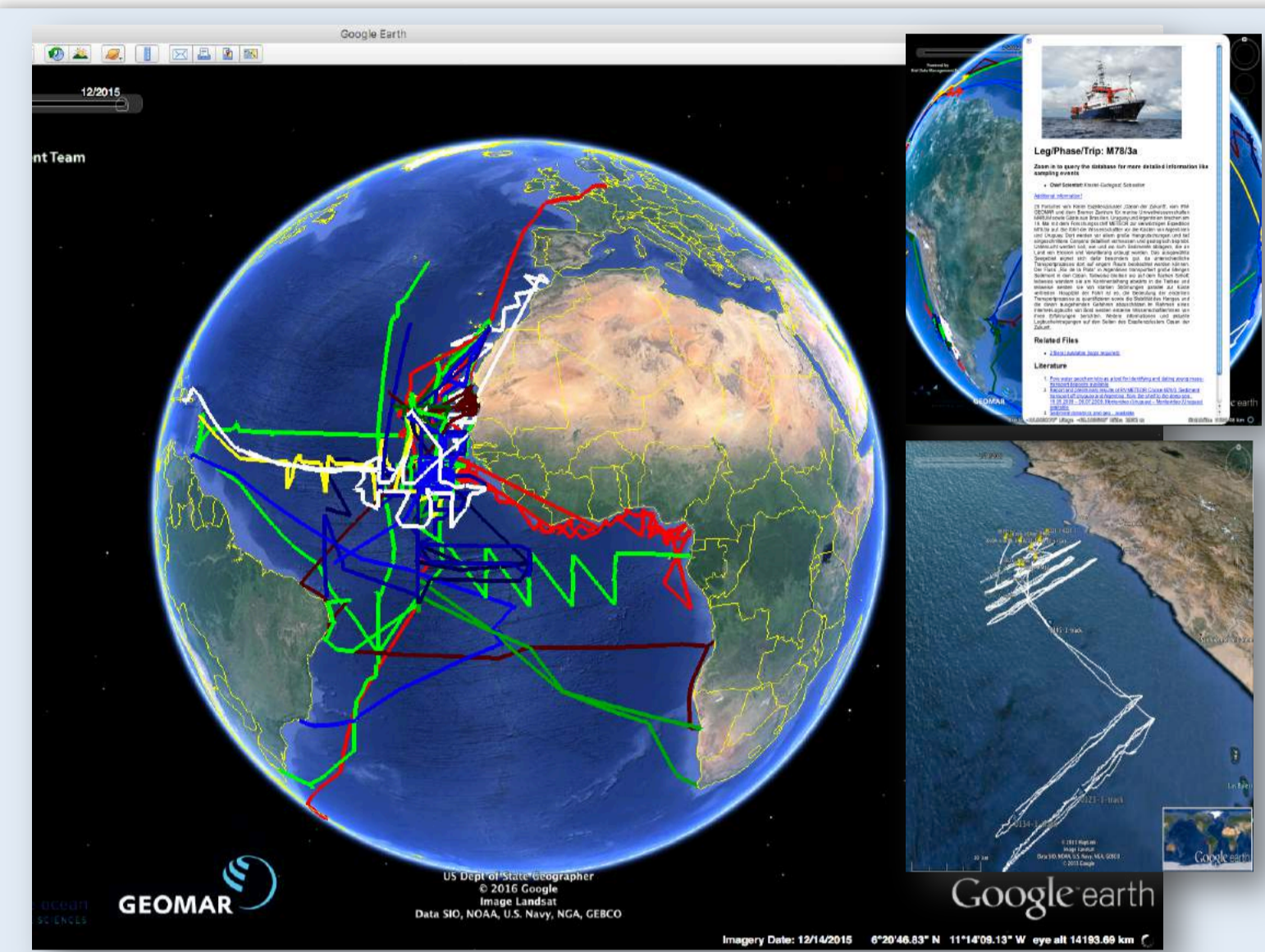
ORGANISATION

As an outstanding research institute of ocean research, GEOMAR aims to fulfil the recommendations of the Helmholtz Association and third-party funding agencies to make the obtained data sustainably available for the scientific community.

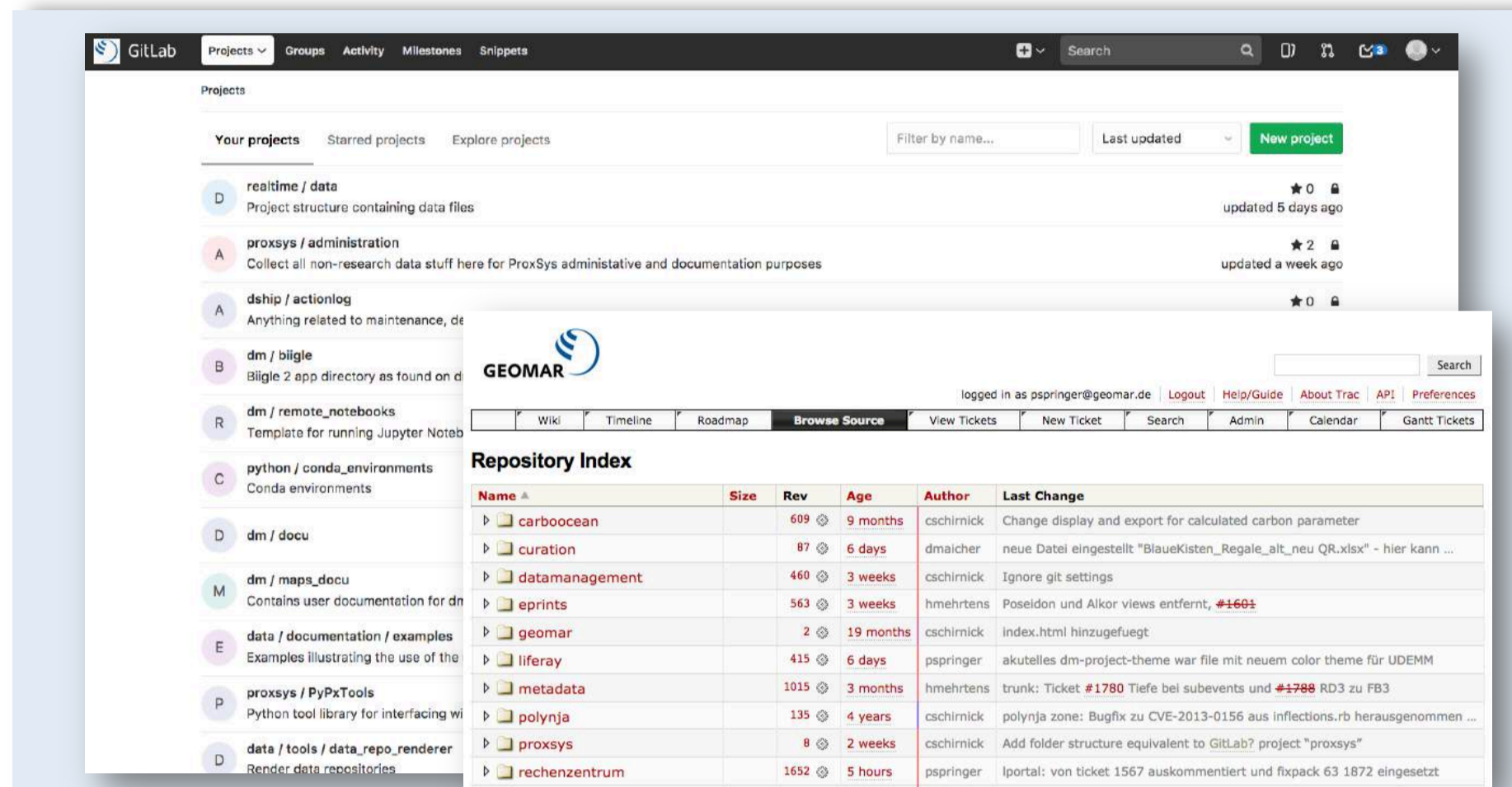
The GEOMAR Data Management Team supports researchers and their projects during the entire lifecycle of data description, data exchange, data storage, publication and data archiving with on-site personal contact and training of researchers during the entire data lifecycle.

DATA MANAGEMENT SERVICES

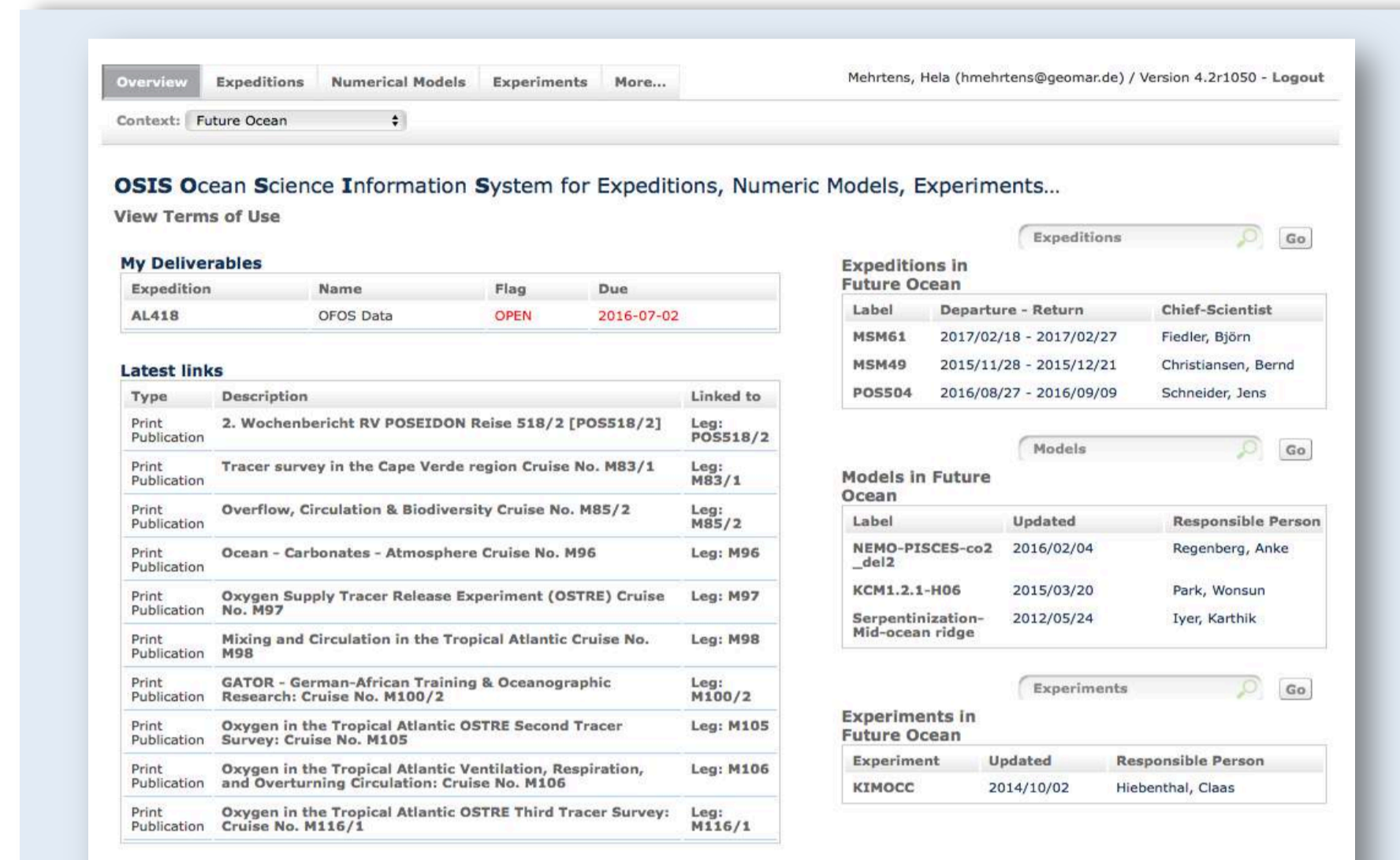
The **Data Management portal** is the starting point for all provided data services (portal.geomar.de). Projects and working groups maintain their public and internal webpages where collaboration tools like wiki, blog, calendar and document exchange are used. User administration for all data services is realised via the portal software (Liferay) and allows guarded access to data services for internal and external users. A data curation process has been implemented as service to realize monitoring and adherence to data policy's time schedules. It allows setup and surveillance of deliverables based on expected or collected research data.



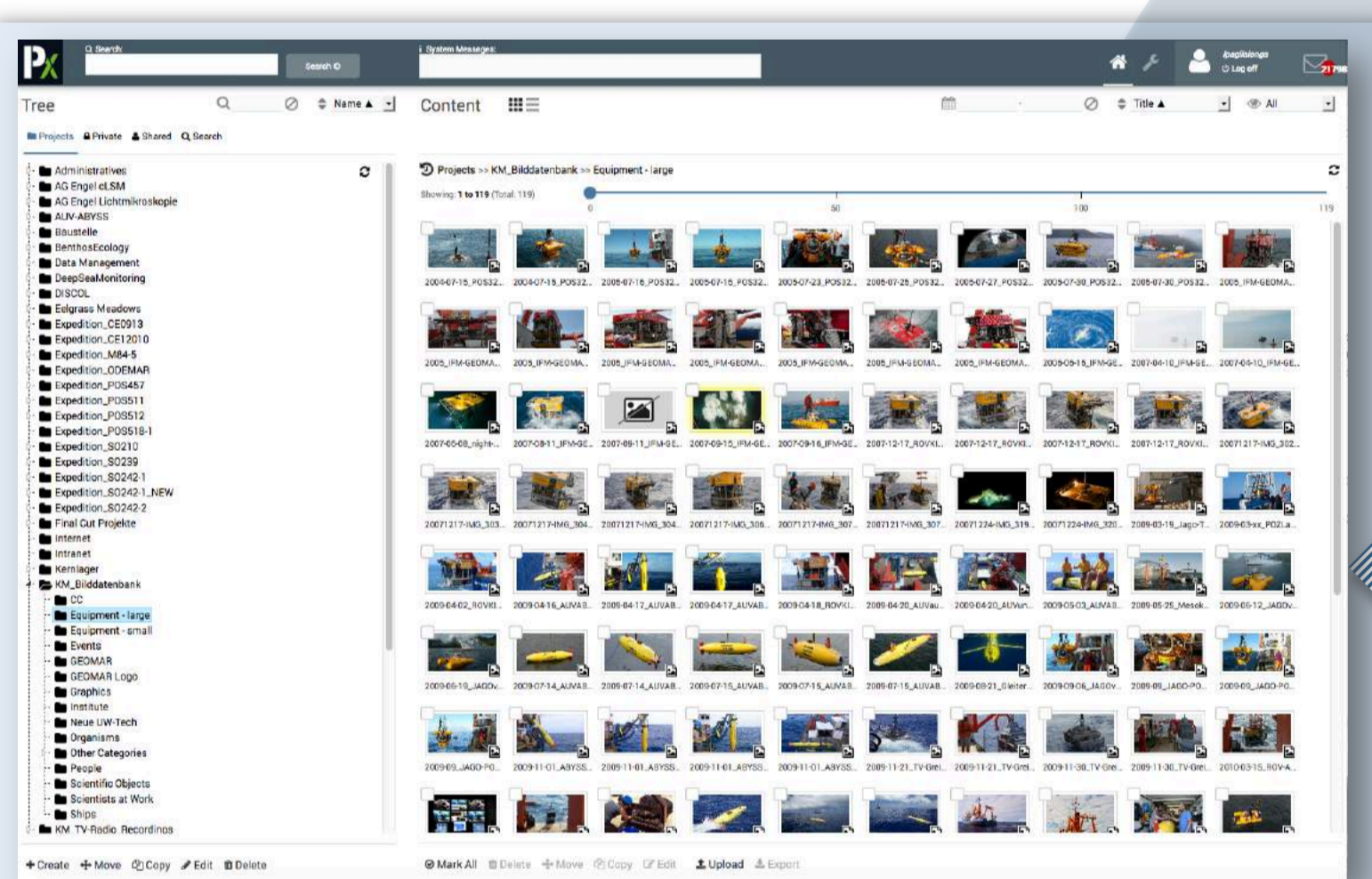
Visualisation of expeditions via KDMI Geo-Search: Search cruise tracks, publications, sampling locations, glider tracks, sample descriptions and detailed cruise information as georeferenced information in GoogleEarth. KML files contain network links in order to retrieve and display information on-the-fly.



Version control systems (Subversion and Git): Used for code development, documentation, data analysis and exchange. Wiki and ticket systems linked to Subversion and Git repositories can be used for documentation, improved collaboration and dissemination of code and even research data. (svn.geomar.de & git.geomar.de)



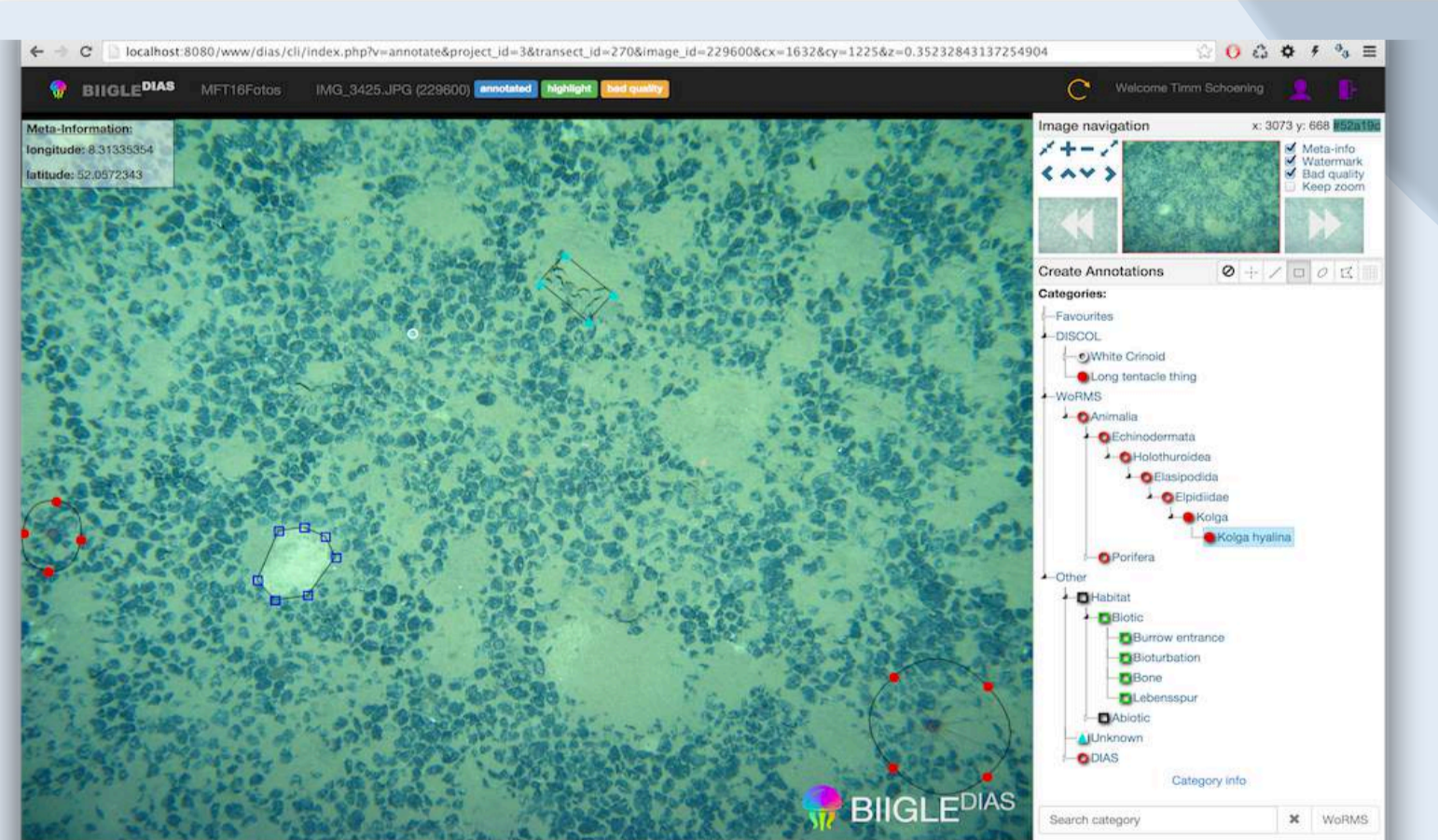
Ocean Science Information System (OSIS): Central information hub where scientists upload and share data files in the context of expeditions, models and experiments. Various types of related links connect OSIS to the other services (portal.geomar.de/osis).



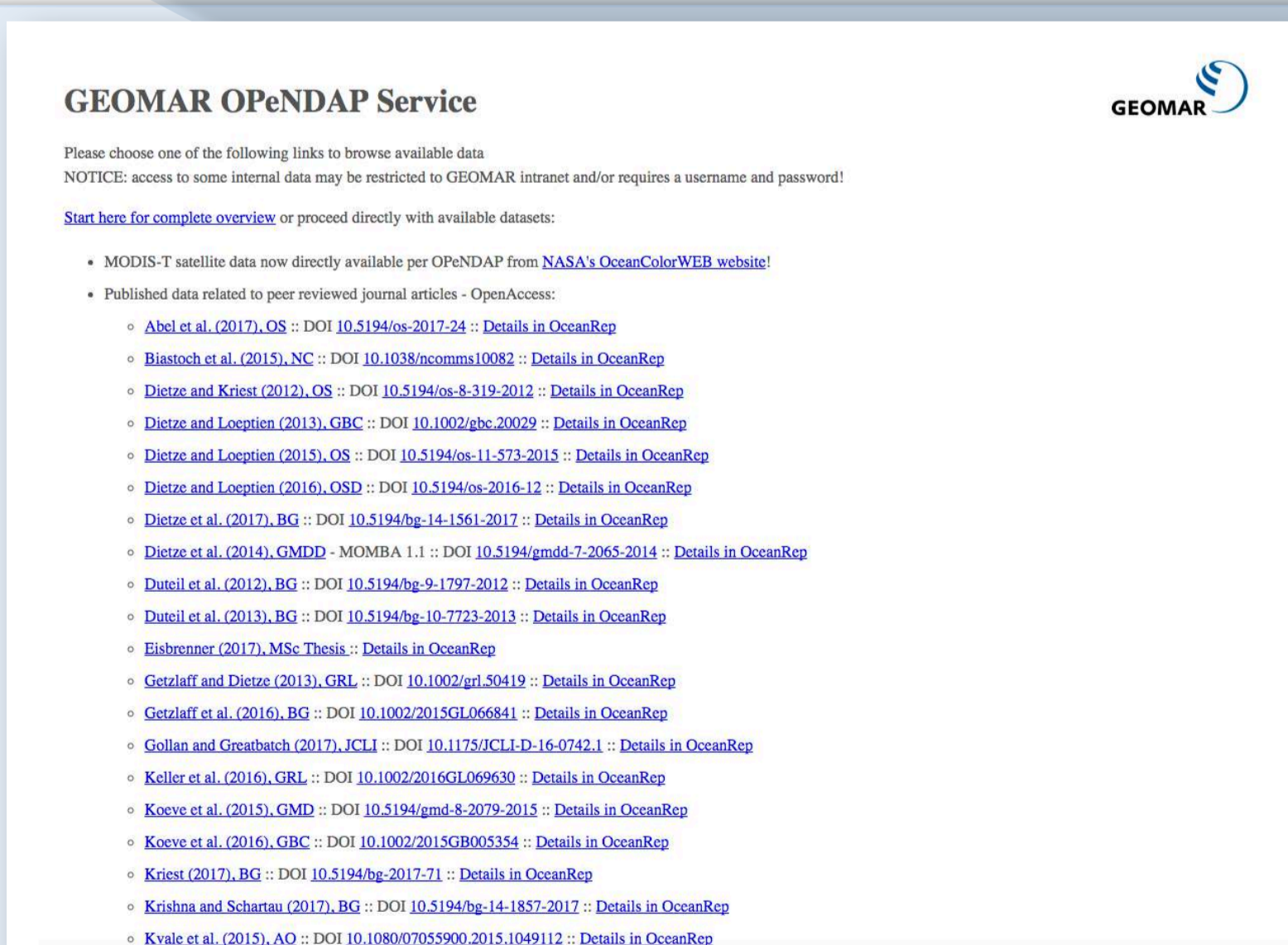
Media Database (ProxSys): Allows to store, describe and search images and videos e.g. acquired during research dives of remotely operated and autonomous underwater vehicles or other imaging devices. (media.geomar.de)



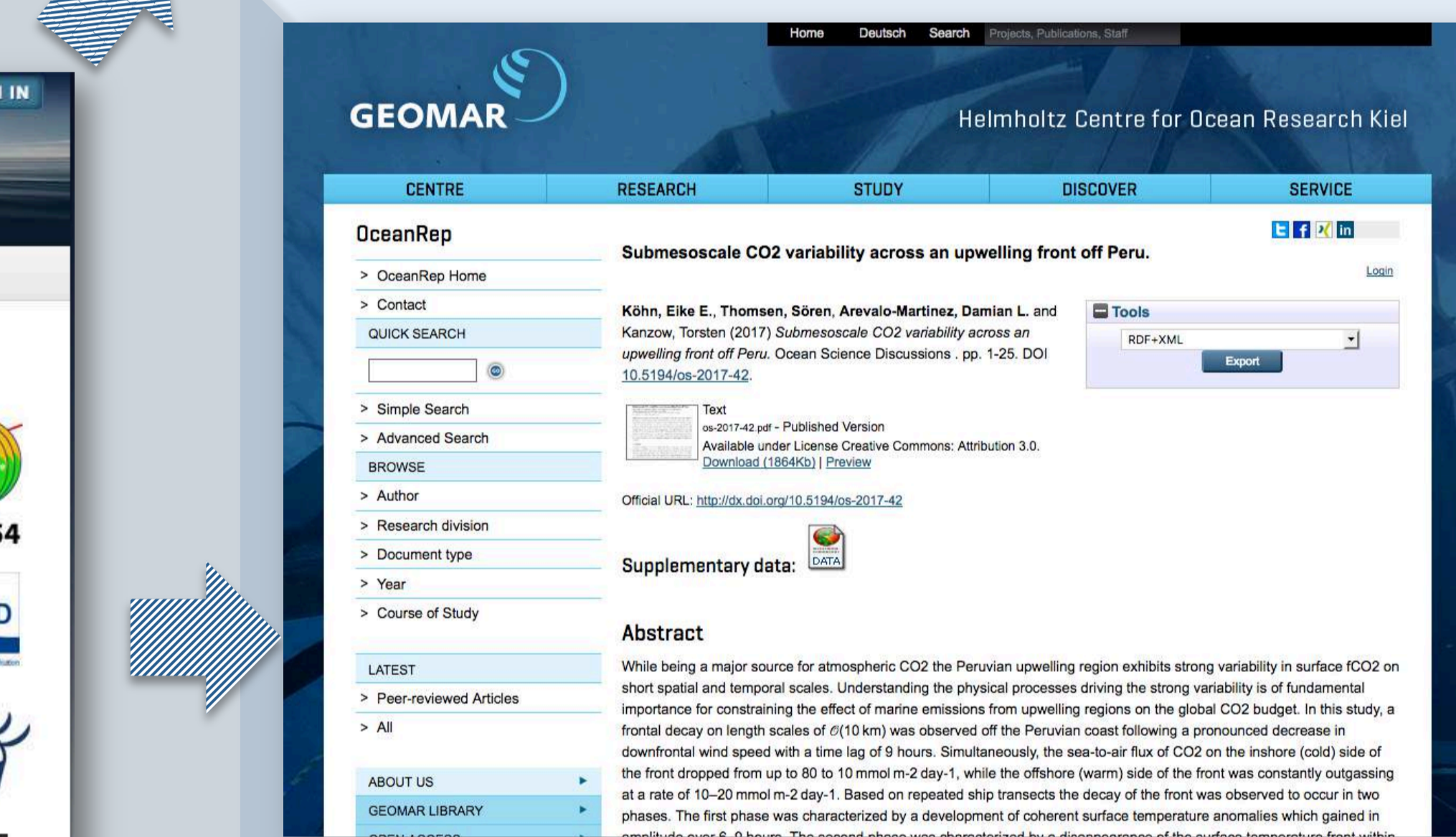
Data Management Portal



BIIGLE (Image annotation system): Uses webservices to access images and videos stored in the media database and provides them for all projects members. It avoids extensive network traffic, facilitates cooperation and reduces obsolete interchange (annotate.geomar.de).



Model output and related objects referenced in peer-reviewed papers are made publicly available via GEOMAR's OPeNDAP (THREDDS) Server (data.geomar.de). The data sets are interlinked in OceanRep and OSIS.



OceanRep: An institutional repository for full text print publications is maintained by the GEOMAR library and also used for specific publication lists, e.g. projects, numerical models or platforms (oceanrep.geomar.de). It is linked to OSIS allowing linkage between authors, their data and publications. An automated data link routine adds icons when additional external data are available.



Data Publication in World Data Centres (e.g. PANGAEA): The data management team assists as data curators when data are to be published in WDC's in order to warrant long-term archival and access to the data with persistent identifiers. This cooperation will make the data globally searchable while links to the data producers will ensure citability and provide contacts for the scientific community (www.pangaea.de).

Data curation process



Measurement/ Experiment

Description in OSIS

Data deliverables

Upload of first data set version (project access only)

6 months Reminder "upload data"

Sharing and use of data within the project

month 7 to month 36

Upload final version

3 years later Reminder "publish data"

Data publication (open access)



CONTACT OR VISIT US

Carsten Schirnick, Pina Springer, Hela Mehrrens, Lisa Paglialonga, Claas Faber
East shore office: Room 8D/215
West shore office: Rooms 072 / 074



datamanagement@geomar.de
Tel: +49 (0)431 / 600-2294
Website: portal.geomar.de

VISIT THE DATA MANAGEMENT TEAM TO ASK FOR:

- DATA SERVICES
- DATA MANAGEMENT TRAININGS & WORKSHOPS
- DATA REPOSITORIES & CURATION (PANGAEA...)
- TEMPLATES, PROPOSALS FOR SHIP TIME & TUTORIALS
- DATA MANAGEMENT PLANS, TOOLS & SCRIPTS