

38. MAGNETOBIOSTRATIGRAPHIC SYNTHESIS OF LEG 123: SITES 765 AND 766 (ARGO ABYSSAL PLAIN AND LOWER EXMOUTH PLATEAU)¹

Michael A. Kaminski,² Peter O. Baumgartner,³ Paul R. Bown,⁴ David W. Haig,⁵ Andrew McMinn,⁶ Michael J. Moran,⁷ Jörg Mutterlose,⁸ and James G. Ogg⁹

ABSTRACT

During ODP Leg 123, Sites 765 and 766 were drilled to examine the tectonic evolution, sedimentary history, and paleoceanography of the Argo Abyssal Plain and lower Exmouth Plateau. At each site, the quality of magnetostratigraphic and biostratigraphic records varies because of complicating factors, such as the predominance of turbidites, the presence of condensed horizons, or deposition beneath the CCD.

Based primarily on the presence of nannofossils, the base of the sedimentary section at Site 765 was dated as Tithonian. A complete Cretaceous sequence was recovered at this site, although the sedimentation rate varies markedly through the section. The Cretaceous/Tertiary boundary is represented by a condensed horizon. The condensed Cenozoic sequence at Site 765 extends from the upper Paleocene to the lower Miocene. A dramatic increase in sedimentation rate was observed in the lower Miocene, and a 480-m-thick Neogene section is present. The Neogene section is continuous, except for a minor hiatus in the lower Pliocene.

The base of the sedimentary section at Site 766 is Valanginian, in agreement with the site's position on marine magnetic anomaly M11. Valanginian to Barremian sediments are terrigenous, with variable preservation of microfossils, and younger sediments are pelagic, with abundant well-preserved microfossils. Sedimentation rate is highest in the Lower Cretaceous and decreases continually upsection. Upper Cenozoic sediments are condensed, with several hiatuses.

INTRODUCTION

Leg 123 offered an excellent opportunity for scientists to examine microfossil faunas and floras from the southern margin of the Tethys Ocean and to compare these with the better known faunas and floras of the low latitudes. A major goal of the cruise was to recover a continuously cored microfossil record from the oldest part of the Indian Ocean and to compare these results with the unique record obtained at DSDP Site 261, which was drilled during DSDP Leg 27. Two sites were drilled during Leg 123 (Fig. 1). Site 765 was drilled on what was assumed to be the oldest oceanic crust in the Argo Abyssal Plain. Site 766, at the foot of the Exmouth Plateau, was drilled to investigate the early breakup history of India and northwestern Australia. Here, we summarize the magnetostratigraphic and biostratigraphic results obtained at these two sites.

CHRONOSTRATIGRAPHY

We established a biostratigraphic and chronostratigraphic framework for use during drilling operations on Leg 123. The chronostratigraphy for the Cenozoic (Figs. 2 and 3) follows the scheme of Berggren et al. (1985a, 1985b), with minor modifica-

tions to the stage boundaries and zonal correlation based on new data by Zijdeveld et al. (1986) and Aubry et al. (1988). For the Mesozoic (Fig. 4), the chronostratigraphic nomenclature of Kent and Gradstein (1986) was used. Both these scales use high-temperature radiometric dates, rather than low-temperature dates, or a mixture of both. However, all numeric scales are hindered by a lack of direct dates for most chronostratigraphic boundaries. For our purposes, we updated the Mesozoic time scale, using new correlations of Lower Cretaceous stage boundaries with magnetostratigraphy. These correlations are based on Ogg (1984), Ogg and Lowrie (1986), Bralower (1987), and Ogg and Steiner (1988). The following correlations were used (1) the Barremian/Aptian boundary was placed slightly below M0R (119 Ma); (2) the Valanginian/Hauterivian boundary was placed within or near M10R (131.5 Ma); (3) the Berriasian/Valanginian boundary was placed in the middle of M15N (138.5 Ma); and (4) the Tithonian/Berriasian boundary was placed in the middle of M19N (145 Ma).

Although the scientific objectives of Leg 122 on the Exmouth Plateau were planned in conjunction with those of Leg 123, here we must issue a cautionary note to the readers of both scientific volumes. In contrast to standard ODP practice, the shipboard scientific party of Leg 122 used the time scale of Haq et al. (1987). Because the ages of chronostratigraphic boundaries between the two time scales differ by as much as several million years, direct comparisons of geochronology with rates of sedimentary processes are complicated.

BIOSTRATIGRAPHY

Calcareous Nannofossils

Cenozoic calcareous nannofossil zonations used during Leg 123 include Gartner (1977) for the Pleistocene and Martini (1971), Okada and Bukry (1980), and Bukry (1981) for the remainder of the Cenozoic. All zonations were reasonably applicable to the eastern Indian Ocean and, where usable, Okada and Bukry's zonation was preferred over Martini's zonation because of its higher resolution.

¹ Gradstein, F. M., Ludden, J. N., et al., 1992. *Proc. ODP, Sci. Results*, 123: College Station, TX (Ocean Drilling Program).

² Department of Geology, University College, London, Gower Street, London WC1E 6BT, U.K., and Department of Paleoceanography, GEOMAR, Wischhofstrasse 1-3, D-2300 Kiel-14, Germany.

³ Institut de Géologie, BFSH2, 1045 Lausanne, Switzerland.

⁴ Department of Geology, University College, London, Gower Street, London WC1E 6BT, U.K.

⁵ Department of Geology, University of Western Australia, Nedlands 6009, Australia.

⁶ Geological Survey of New South Wales, Kensington 2300, N.S.W., Australia.

⁷ Department of Geology, University of Papua New Guinea, Port Moresby, Papua New Guinea.

⁸ Institut für Geologie und Paläontologie, Universität Hannover, Callinstrasse 30, 3000 Hannover 1, Germany.

⁹ Department of Earth and Atmospheric Sciences, Purdue University, West Lafayette, IN 47907, U.S.A.

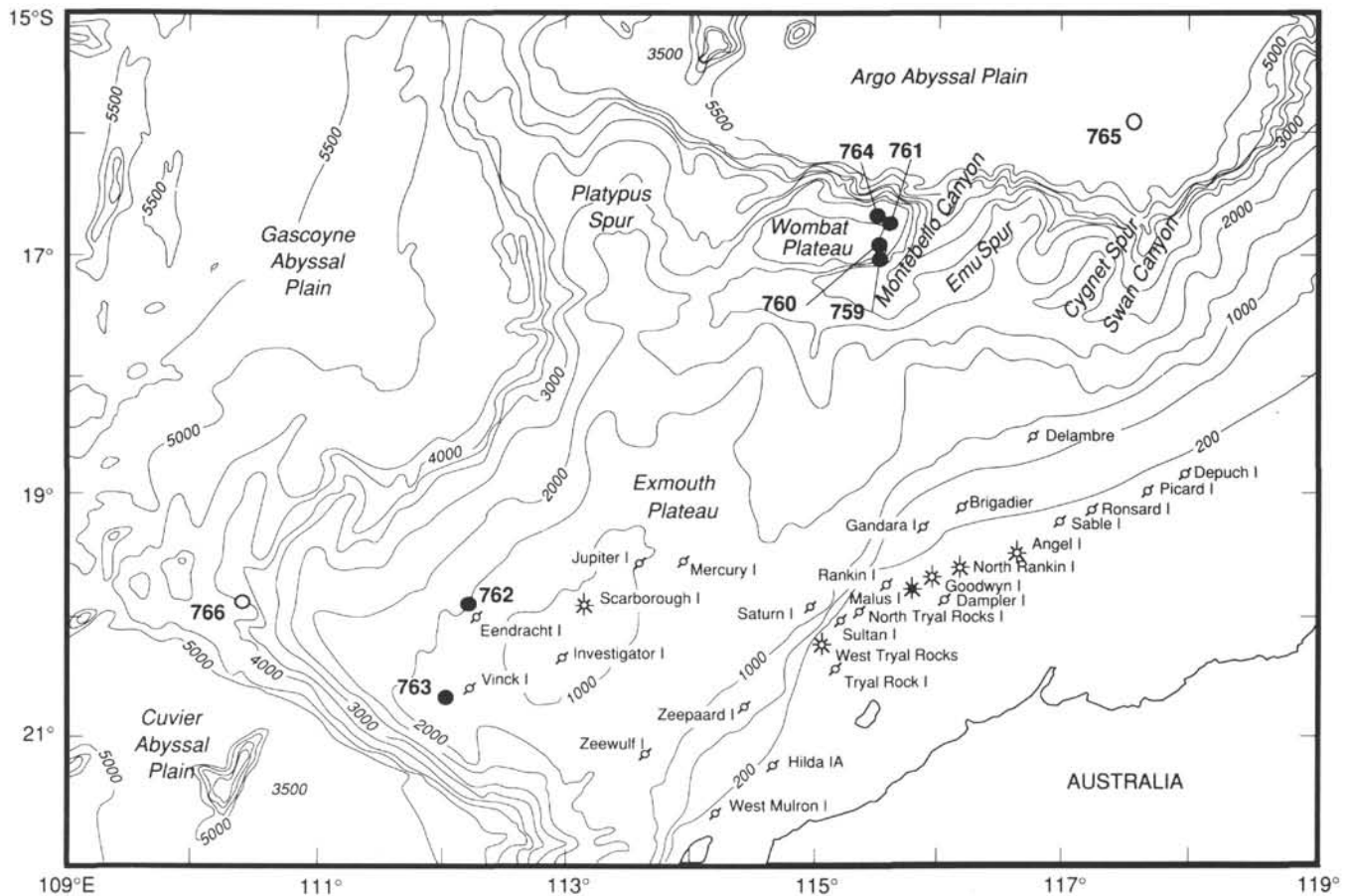


Figure 1. Map showing Leg 123 Sites 765 and 766 off northwestern Australia. Bathymetric contours in meters.

The zonations of Thierstein (1971, 1976), Sissingh (1977), and Roth (1978), as well as unpublished data, were used to correlate Cretaceous strata. The small amount of nannofossil research from Jurassic sequences has thus far precluded the use of a widely accepted zonal scheme. For the Upper Jurassic to Lower Cretaceous interval, data from DSDP Site 261 were used and include those of Proto Decima (1974) and Cooper (1984). Other zonal schemes employed include those of Thierstein (1976), Roth et al. (1983), Bralower (1987), Bown et al. (1988), and Mutterlose (in press).

The mixing of assemblages is less pronounced in the Cretaceous sediments and probably reflects less erosive turbidity currents. The abundance and preservation of nannofossils decline in the Lower Cretaceous part of the section where several barren intervals occur.

Hole 766A contains generally abundant Cenozoic and Upper Cretaceous nannofossil assemblages, and the overall preservation is moderate to good. Little evidence of reworking was observed in the assemblages from this hole, indicating normal, pelagic deposition. Lower Cretaceous nannofossils are less abundant and diverse, but were found in a consistently good state of preservation, despite unfavorable lithologies at the base of the hole.

Planktonic Foraminifers

The tropical zonation of Blow (1969) as amended by Kennett and Srinivasan (1983) was used during Leg 123. The boundary between Zones "N19" and "N20" was taken at the first appearance of *Globorotalia crassaformis*. The first appearance of *Sphaeroidinella dehiscens* may be diachronous in the Indian Ocean (Vincent, 1977) and may be unsuitable for marking the boundary

between Zones "N18" and "N19." This level is approximately coincident with the first appearance of *Globorotalia (Hirsutella) margaritae*, as defined by Kennett and Srinivasan (1983), and the extinction of *Globorotalia (Globorotalia) plesiotumida*. The N-zonation has been used extensively in the Australian Northwest Shelf region (Apthorpe, 1988; Chaproniere, 1981) and elsewhere in the Indian Ocean.

In the Paleogene part of the succession, the tropical zonation of Blow (1969, 1979) was applied to the upper Eocene–Oligocene, and Berggren's (1969) zonation was used for the Paleocene to mid-Eocene. A similar zonal scheme was employed for the Wombat Plateau drilled during Leg 122 (Shipboard Scientific Party, 1990) and by McGowran (1977) for DSDP sites in the Indian Ocean.

Cretaceous sediments were zoned using the scheme of Caron (1985) for the Aptian to Maestrichtian. Because many index species are missing from the low-diversity Cretaceous assemblages recovered from this section, most of the zonal assignments are broad. Planktonic assemblages recorded elsewhere from the northwest Australian margin also lack many of the zonal index forms (Belford, 1981; Herb and Schreiberova, 1977; McGowran, 1977; Wright and Apthorpe, 1976). The scattered Early Cretaceous planktonic foraminifers encountered during Leg 123 were zoned following Stam (1986), but species in his zonal scheme have not yet been documented from the Indian Ocean.

At Site 765, the application of planktonic foraminiferal biostratigraphy in the Cenozoic part of the sequence was constrained by the allochthonous nature of the sediments and the large amount of reworking. Analysis of planktonic foraminiferal assemblages was performed mainly on shipboard core-catcher samples. Middle

Geochronometric scale (Ma)	Marine magnetic anomaly	Polarity	Chron.	Standard epoch	Calcareous nannofossils		Planktonic foraminifers	Radiolarians
					Okada & Bukry (1980)	Martini (1971)		
1	1	Matuyama B.	C1	Pleistocene	CN15 CN14b	NN21 NN20	N23	<i>Lamprocyrtis haysi</i>
2	2	Old. 2 Reu.	C2	late Pliocene	CN13a CN13b	NN19	N22	<i>Pterocanium prismatium</i>
3	3	Gauss	C2a		CN12d CN12b	NN18 NN17	N21	
4	4	Gilbert	C3	early Pliocene	CN12a CN11a CN11b	NN16 NN15 NN14	"N20"	<i>Spongaster pentas</i>
5	5		C3a		CN10c	NN13	"N19"	
6	6		C4	late Miocene	CN10b CN10a	NN12	N18 N17b	<i>Stichocorys peregrina</i>
7	7		C4a		CN9b		N17a	
8	8		C5		CN9a	NN11		<i>Didymocyrtis penultima</i>
9	9		C5a		CN8b CN8a	NN10	N16	<i>Didymocyrtis antepenultima</i>
10	10		C5b		CN7a+b	NN9		
11	11		C5c	middle Miocene	CN6	NN8	N15 N14 N13	<i>Diartus petterssoni</i>
12	12		C5d		CN5b	NN7	N12	
13	13		C5e		C5aa C5ab C5ac C5ad		N11 N10	
14	14		C6		C5a	NN6	N9	<i>Dorcadospyrus alata</i>
15	15		C6a		CN4	NN5	N8	
16	16		C6b	early Miocene	CN3	NN4	N7	<i>Calocyclella costata</i>
17	17		C6c		CN2	NN3	N6	<i>Stichocorys wolffii</i>
18	18		C6d				N5	<i>Stichocorys delmontensis</i>
19	19		C6e		NN2			
20	20		C6f			N4b	<i>Cyrtocapsella tetrapera</i>	
21	21		C6g				<i>Lychnocanoma elongata</i>	
22	22		C6h					
23	23		C6i					

Figure 2. Correlation of Neogene chronostratigraphy, biostratigraphy, and magnetostratigraphy used during Leg 123. The revised age of the Miocene/Pliocene boundary is after Zijderveld et al. (1986). Correlation of Pliocene/Pleistocene radiolarian zones to magnetostratigraphy follows Sanfilippo et al. (1985), correlation of Miocene zones follows Berggren et al. (1985b). Magnetic chron terminology follows that adopted by Leg 108 (Ruddiman, Sarnthein, et al., 1988). Interpolated ages of magnetic polarity reversals and planktonic foraminiferal/nannofossil datums used to define zones are after Berggren et al. (1985b). Planktonic foraminiferal "N" zonation is modified slightly after Kennett and Srinivasan (1983). Zone N17 was subdivided into two parts using the FO of *Pulleniatina primalis*; Zone N4B was subdivided based on the FO of *Globoquadrina dehiscens*; the base of N13 is defined by the LO of the *G. fohsi* lineage, and the base of N20 is defined here as the FO of *G. crassaformis* s.l. at 4.3 Ma.

Geochronometric scale (Ma)	Marine magnetic anomaly	Polarity	Chron.	Standard epoch	Calcareous nannofossils		Blow (1969) Berggren (1969)	Radiolarians			
					Okada & Bukry (1980)	Martini (1971)					
24	6C		C6c	late Oligocene	CP19b	NP25	N4a	<i>Dorcadospyrus ateuchus</i>			
26	7		C7								
	7A		C7a								
28	8		C8								
			C9	early Oligocene	CP19a	NP24	P21a	-----			
30	10		C10								
32	11		C11								
	12		C12								
34				late Eocene	CP17	NP23	P20	<i>Theocyrtis tuberosa</i>			
					CP16c		NP22		P19		
36	13		C13		CP16b		NP21		P18	<i>Cryptopora ornata</i>	
					CP16a				P17		
38	15		C15	CP15b	NP19/20	P16	<i>Calocyclus bandyca</i>				
	16		C16	middle Eocene	CP15a	NP18	P15	<i>Carpocanistrum azyx</i>			
40	17		C17								
42	18		C18								
44	19		C19	early Eocene	CP14b	NP17	P14	<i>Podocyrtis goetheana</i>			
							CP14a		NP16	P13	<i>Podocyrtis chalara</i>
46	20		C20							CP13c	NP15
							CP13b		P11	<i>Podocyrtis ampla</i>	
48				CP13a	NP14	P10	-----				
50	21		C21								
				CP12b							
52	22		C22	CP12a				NP13	P9	<i>Thyrsoyrtis triacantha</i>	
				CP11	NP12	P8	-----				
54	23		C23	CP10							
				CP9b				NP11	P7		
56	24		C24	CP9a						P6b	
				CP8b	NP9	P6a	<i>Bekoma bidartensis</i>				
58	25		C25	CP8a				P5			
				CP7				NP8	P4		
60	26		C26	CP6						NP7	
				CP5	NP6	P3b	-----				
62				CP4				NP5	P3a		
				CP3				NP4	P2		
64	27		C27	CP2						NP3	P1c
				CP1b	NP2	P1b	Unzoned				
66	28		C28	CP1a				NP1	P0 - P1a		

Figure 3. Correlation of Paleogene chronostratigraphy, biostratigraphy, and magnetostratigraphy used during Leg 123. The revised age of the Paleocene/Eocene boundary is after Aubry et al. (1988). Correlation of radiolarian zones (Sanfilippo et al., 1985) follows correlation of nannofossil zones of Berggren et al. (1985a).

Age (M.Y.)	Standard Stage	Magnetic Polarity	Nannofossils	Planktonic Foraminifers	Radiolarians	Palynomorphs
70	MAESTRICHTIAN	30	CC26 (<i>N. frequens</i>)	<i>A. mayaroensis</i>	<i>A. tylotus</i>	<i>A. circumtabulata</i>
			CC25 (<i>A. cymbiformis</i>)	<i>G. gansseri</i>		<i>E. bifidum</i>
80	CAMPANIAN	32	CC24 (<i>R. laevis</i>)	<i>G. aegyptiaca</i>	<i>A. pseudoconulus</i>	<i>A. acutula</i>
			CC23 (<i>T. phacelosus</i>)	<i>G. havanensis</i>		<i>C. foveolatum</i>
			CC22 (<i>Q. trifidum</i>)	<i>G. calcarata</i>		<i>S. carnavonensis</i>
			CC21 (<i>Q. sissinghii</i>)	<i>G. ventricosa</i>		
			CC20 (<i>C. aculeatus</i>)			
90	SANTONIAN	33	CC19 (<i>C. ovalis</i>)	<i>G. elevata</i>	<i>T. urna</i>	<i>A. coronata</i>
			CC18 (<i>P. parca</i>)	<i>D. asymetrica</i>		<i>A. suggestium</i>
90	TURONIAN	33	CC17 (<i>C. obscurus</i>)	<i>D. concavata</i>	<i>A. superbum</i>	<i>C. hymenophora</i>
			CC16	<i>D. primitiva</i>		<i>T. balmei</i>
			CC14 (<i>M. decussata</i>)	<i>M. sigali</i> , <i>H. helvetica</i>		<i>P. infusorioides</i>
			CC13 (<i>M. furcatus</i>)	<i>v. archeocretacea</i>		
100	CENOMANIAN	33	CC12 (<i>E. eximus</i>)	<i>R. cushmani</i>	<i>O. somphedia</i>	<i>D. multispinum</i>
			CC11 (<i>Q. gardeni</i>)			<i>X. asperatus</i>
100	ALBIAN	33	CC10 (<i>M. decoratus</i>)	<i>R. reicheli</i>	<i>P. pseudomaccephala</i>	<i>P. ludbrookiae</i>
			CC9 (<i>E. turriseiffelii</i>)	<i>R. brotzeni</i>		<i>D. denticulata</i>
110	APTIAN	M0	CC8 (<i>P. columnata</i>)	<i>R. appenninica</i>	<i>M. gracilis</i>	<i>M. tetraacantha</i>
				<i>R. tincinensis</i>		<i>D. davidii</i>
120	BARREMIAN	M3		<i>R. subtincinensis</i>	<i>S. euganea</i>	<i>O. operculata</i>
				<i>B. breggiensis</i>		<i>A. cinctum</i>
130	HAUTERIVIAN	M5	CC7 (<i>C. litterarius</i>)	<i>T. primula</i>	<i>C. pythia</i>	<i>M. australis</i>
				<i>T. bejuensis</i> , <i>H. gorbachikae</i>		<i>D. tythopora</i>
140	VALANGINIAN	M8		<i>G. algeriana</i>	<i>D. septemporatus</i>	<i>M. testudinaria</i>
				<i>S. cabri</i> , <i>G. blowi</i>		<i>P. burgeri</i>
150	BERRIASIAN	M10	CC6 (<i>M. hoschulzii</i>)		<i>C. septemporatus</i>	<i>S. tabulata</i>
						<i>S. areolata</i>
150	TITHONIAN	M11	CC5 (<i>L. bolli</i>)		<i>FO T. pulchra</i>	<i>E. torynum</i>
						<i>B. reticulatum</i>
160	KIMMERID	M12	CC4 (<i>C. loriei</i>)		<i>FO H. barbui</i>	<i>D. lobispinosum</i>
						<i>C. delicata</i>
160	OXFORDIAN	M14	CC3 (<i>C. oblongata</i>)		<i>FO R. cretacea</i>	<i>R. wisemaniae</i>
						<i>P. iehense</i>
160	OXFORDIAN	M16	CC2 (<i>N. steinmannii</i>)		<i>D. sansalvatorensis</i>	<i>D. jurassicum</i>
						<i>A. helenae</i>
160	OXFORDIAN	M18			<i>FO S. cetia</i>	<i>O. montgomeryi</i>
						<i>S. dicranacanthos</i>
160	OXFORDIAN	M20			<i>A. umbilica</i>	<i>C. perforans</i>
160	OXFORDIAN	M21				<i>D. swanense</i>
160	OXFORDIAN	M22				<i>W. clathrata</i>
160	OXFORDIAN	M23				<i>W. spectabilis</i>
160	OXFORDIAN	M25				<i>R. aemula</i>
160	OXFORDIAN	AM27				
			NJ15 (<i>C. margerelii</i>)			
			NJ14 (<i>S. bigotii maximum</i>)			

Figure 4. Correlation of Cretaceous chronostratigraphy, biostratigraphy, and magnetostratigraphy used during Leg 123. The revised ages of the Lower Cretaceous stage boundaries follow Ogg and Steiner (1988). Nannofossil zonation follows that of Sissingh (1977); planktonic foraminiferal zonation follows Caron (1985); radiolarian zonation follows Baumgartner (1984). Palynomorph zonation for northwest Australia is adopted from Helby et al. (1987) and McMinn (1988b). Dashed lines indicate second-order correlations to magnetostratigraphy.

Miocene assemblages were especially poorly preserved, with specimens often having thick overgrowths of sparry calcite. Paleogene and Upper Cretaceous assemblages display moderate to good preservation, although reworking was also observed.

At Site 766, planktonic foraminifers are abundant and well preserved in the upper part of the Cenozoic, but dissolution increases downhole. Paleogene and Cretaceous assemblages are poorly preserved, with only rare, small-sized planktonics. Cenomanian and Turonian assemblages contain abundant but poorly preserved forms.

Benthic Foraminifers

The Cenozoic biostratigraphy of calcareous benthic foraminifers recovered during Leg 123 was compared with the biostratigraphic ranges of Tjalsma and Lohmann (1983) and Van Morkhoven et al. (1986). These biostratigraphic schemes were applicable at Site 766, but because of the location of Site 765 beneath the CCD, benthic foraminifers were recovered mainly from turbidites.

The Upper Cretaceous zeolitic clays at DSDP Site 261 on the Argo Abyssal Plain contain a distinct assemblage of small, agglutinated foraminifers (Krasheninnikov, 1974). Leg 123 biostratigraphy of these taxa, some of which may be unique to the abyssal realm, was based on the zonation of Geroch and Nowak (1984). This zonation is based on similar assemblages from the Carpathian flysch basins and has been used successfully for Upper Cretaceous abyssal red clay sediments from DSDP Site 603 and ODP Site 641 in the North Atlantic (Moullade et al., 1988; Kuhnt and Kaminski, 1989). The taxonomy and biostratigraphy of Upper Cretaceous calcareous benthic foraminifers recovered during Leg 123 follow Sliter (1980) and Dailey (1983).

Lower Cretaceous deep-water benthic foraminifers were dated using the taxonomy and biostratigraphy of Bartenstein and Brand (1951), Luterbacher (1972), Maync (1973), Bartenstein (1974), Kuznetsova (1974), Kuznetsova and Seibold (1977), Gradstein (1978, 1983, 1986), Sliter (1980), Moullade (1984), and Riegraf and Luterbacher (1989). However, because no formal zonation based on cosmopolitan deep-water benthic foraminifers has been proposed for the Lower Cretaceous, we report the first and last occurrences of selected taxa for comparative purposes only.

At Site 765, the abundance and diversity of Cenozoic benthic foraminifers parallel those of planktonic foraminifers. Assemblages from the Neogene turbidites are size-sorted with variable preservation, whereas Paleogene and Upper Cretaceous assemblages are better preserved. One sample was found to contain an Upper Cretaceous abyssal agglutinated assemblage. The Cenomanian section is represented in an agglutinated facies. Samples from the Albian and Aptian are barren. However, the diversity of agglutinated forms recovered in the Neocomian section at Site 765 is much higher than previously recorded from any DSDP/ODP site, which underscores the need for more taxonomic and biostratigraphic research among this group of abyssal organisms.

Benthic assemblages from Site 766 are well preserved and composed of cosmopolitan, deep-water calcareous species. Benthic foraminifers are abundant in the Cenozoic and Upper Cretaceous, but decline in abundance in the Lower Cretaceous. Preservation in the sandy sediments at the base of the hole is poor.

Radiolarians

Cenozoic radiolarian assemblages were assigned to biozones initially proposed by Riedel and Sanfilippo (1978) and later reviewed by Sanfilippo et al. (1985). The late Neogene correlation of radiolarian datums to magnetostratigraphy by Casey and Reynolds (1980) proved useful.

At present, no standard radiolarian zonation is available for the Cretaceous. Ages were based on an integration of radiolarian

ranges proposed by Sanfilippo and Riedel (1985), Schaaf (1981, 1985), Pessagno (1977), and Aita (1987). The lowermost Cretaceous was zoned after Baumgartner (1984, 1987). At the Leg 123 sites, the use of published radiolarian zonations proved difficult because of the scarcity of low-latitude (Tethyan) species known from other oceans. Therefore, we report the first and last occurrences of selected taxa for comparative purposes only.

Palynomorphs

No Southern Hemisphere or tropical Cenozoic dinoflagellate zonation is widely accepted, but one of the more applicable ones is that of Williams (1977). Hansen (1977) produced a detailed Maestrichtian/Danian boundary zonation that can be applied with success to the northwest Australian margin (McMinn, 1988a). The zonation of Helby et al. (1987) was used for the Jurassic to Lower Cretaceous dinoflagellate assemblages. The most applicable Upper Cretaceous zonation is that of McMinn (1988b), which was developed based on material from the northwest Australian margin.

SITE 765

Site 765 is located at 15°58.541'S, 117°34.495'E at a water depth of 5723 m about 15 km seaward of the geophysical continent/ocean boundary that separates Australia from the Argo Abyssal Plain. The site is located on marine magnetic anomaly M26, which is of late Oxfordian age. Four holes were drilled at the site. Hole 765A did not recover the mud line and was abandoned after recovering one core. Hole 765B, drilled using the advanced piston corer and extended core barrel, recovered 395.6 m of sediment in 41 cores, with an average recovery of 68%. Hole 765C was washed down to a sub-bottom depth of 350.2 m, then cored using the rotary core barrel to 935.6 mbsf. From Hole 765C, 613.7 m of section was recovered (including 30 m of basaltic basement) in 65 cores, with an average recovery of 60%. Hole 765D was washed to basement to drill basalt; no sediments were recovered.

Hole 765B

Site 765 is presumed to have been situated for most, if not all, of its history beneath the CCD. Therefore, the occurrence of calcareous microfossils is directly related to the presence of graded carbonate turbidites derived from the shelf or slope. Radiolarians also occur in the upper nine cores of the hole. Palynomorphs occur in scattered samples, but the lack of a standard Cenozoic zonation limits their usefulness for age determination. Nannofossils and planktonic foraminifers are always present in the turbidites and make up a significant part of the sediment. Preservation varies from poor in the coarse-grained basal units of the turbidites to good toward the top of the graded units. Planktonic foraminifers are best represented in the turbidite sands. These coarse sands contain sorted assemblages of large-size specimens, whereas the finer parts of graded beds contain mainly juvenile forms that were difficult to classify. Intervals barren of carbonate overlie the graded units; these represent the autochthonous abyssal sediments. Some of these sediments contain radiolarians. Throughout the hole, nannofossil assemblages commonly exhibit significant degrees of reworking, which limits the use of last occurrence datums.

The natural remanent magnetization (NRM) intensity of the calcareous turbidites is generally weak (0.1 to 1 mA/m), but the intercalated pelagic sediments have intensities greater than 1 mA/m. Alternating field (AF) demagnetization of the cores yielded stable directions of demagnetization, enabling identification of a polarity pattern. Polarity chronozones were assigned according to the nannofossil and foraminifer biostratigraphy and the magnetic-polarity time scale.

The chronostratigraphy of Hole 765B is constrained by a total of 17 biostratigraphic events (Table 1). These consist mainly of

Table 1. Chronostratigraphy of Hole 765B, showing 17 biostratigraphic events.

	Datum/zone	Interval	Age (Ma)	Reference
R	<i>C. tuberosa</i> Zone	1H, top to 2H-CC	0–0.6	Sanfilippo et al., 1985
R	<i>A. ypsilon</i> Zone	2H-CC to 5H-CC	0.6–1.0	Sanfilippo et al., 1985
R	<i>A. angularae</i> Zone	5H-CC to 9H-CC	1.0–1.6	Sanfilippo et al., 1985
F	LO <i>G. fistulosus</i>	2H-CC to 3H-CC	1.6	Berggren et al., 1985
F	LO <i>G. extremus</i>	3H-CC to 4H-CC	1.8	Berggren et al., 1985
N	LO <i>D. brouweri</i>	9H-CC to 10H-CC	1.9	Berggren et al., 1985
F	FO <i>G. truncatulinoides</i>	10H-CC to 11H-CC	1.9	Berggren et al., 1985
F	FO <i>G. toseaensis</i>	13H-CC to 14H-CC	3.1	Berggren et al., 1985
N	FO <i>P. lacunosa</i>	14H-CC to 15H-CC	3.4	Berggren et al., 1985
N	LO <i>S. abies</i> and <i>S. neoabies</i>	14H-CC to 15H-CC	3.47	Berggren et al., 1985
N	LO <i>R. pseudoumbilicata</i>	14H-CC to 15H-CC	3.5	Berggren et al., 1985
F	S/D coiling <i>Pulleniatina</i>	15H-CC to 16H-CC	3.8	Berggren et al., 1985
N	LO <i>D. quinqueramus</i>	17H-CC to 18H-CC	5.6	Berggren et al., 1985
N	FO <i>N. quinqueramus</i>	28X-CC to 29X-CC	8.2	Berggren et al., 1985
N	FO <i>C. calyculus</i>	35X-CC to 36X-CC	10	Berggren et al., 1985
M	Brunhes/Matuyama	5H-5, 35	0.73	Berggren et al., 1985
M	Top Jaramillo	Top 8H	0.91	Berggren et al., 1985
M	Bottom Jaramillo	Bottom 8H	0.93	Berggren et al., 1985
M	Bottom Olduvai	Bottom 10H	1.68	Berggren et al., 1985

nannofossils and planktonic foraminifers, with radiolarians also contributing to the Pleistocene biozonation. Additional magnetostratigraphic events contribute to the placement of stage boundaries, particularly in the upper part of the hole. A magnetostratigraphic summary of Hole 765B is presented in Figure 5.

Chronostratigraphic resolution within the Pleistocene in Hole 765B is excellent, with radiolarians and magnetostratigraphy yielding the best results. Cores 123-765B-1H and 123-765B-2H were assigned to the *Buccinosphaera invaginata* Zone or the *Collosphaera tuberosa* Zone (Sanfilippo et al., 1985), indicating an age younger than 400,000 yr. Cores 123-765B-3H to 123-765B-8H were assigned to the *Amphirhopalum ypsilon* Zone, indicating an age younger than 1.0 Ma. The Brunhes/Matuyama boundary (0.73 Ma) is located 35 cm below the top of Section 123-765B-5H-5. The normal-polarity zone (recognized from Core 123-765B-8H to the bottom of Core 123-765B-9H) may be a greatly thickened Jaramillo (0.91–0.98 Ma).

The Pliocene/Pleistocene boundary (1.6 Ma) was placed within Core 123-765B-10H, based on biostratigraphy and magnetics. Radiolarians belonging to the *Anthocyrtis angulare* Zone (<1.6 Ma) occur in Sample 123-765B-9H-CC, and the FAD of *Globorotalia truncatulinoides* (1.9 Ma) is found in Sample 123-765B-10H-CC. Therefore, the normal-polarity zone located from the bottom of Core 123-765B-9H to Core 123-765B-10H may be Chron C2n (Olduvai) (1.66–1.88 Ma), and the reversed-polarity zone from the bottom of Core 123-765B-10H to -11H may be identified as Chron C2r. Samples 123-765B-11H-CC through -14-CC were placed in nannofossil Zone CN12 (*Discoaster brouweri* Zone) based on the presence of abundant *Pseudoemiliania lacunosa* and the absence of *Gephyrocapsa oceanica*. This assemblage suggests a late Pliocene age. Below the upper disturbed interval in Core 123-765B-11H, Cores 123-765B-12H through the upper third of Core 123-765B-17H display predominantly normal polarity, with reversed polarity in the lower portion of Core 123-765B-13H and -15H. The late Pliocene age of this predominantly normal-polarity interval implies a correlation to polarity Chron C2An ("Gauss"), with the two reversed-polarity zones assigned to the two reversed-polarity subchrons within Chron C2An. The underlying reversed-polarity zone comprising the lower two-thirds of Core 17R is assigned to Chron C2Ar of earliest late Pliocene age.

The Miocene/Pliocene boundary in Hole 765B is represented by a hiatus or significantly condensed section within Core 123-765B-18H. Sample 123-765B-17H-CC belongs in nannofossil Zone CN11 (3.4–3.7 Ma), but below this sample, the upper Mio-

cene to lower Pliocene nannofossil Zones CN10a–10c, planktonic foraminifer Zone N19, and uppermost Miocene Zone N18 were not identified. Sample 123-765B-18-CC belongs in nannofossil Zone CN9 (*Discoaster quinqueramus*) indicating an age greater than 5.6 Ma. Therefore the normal-polarity interval in Core 123-765B-18H may be Chron C3An of latest Miocene age.

The chronostratigraphy of Miocene sediments in Hole 765B is based entirely on calcareous nannofossils and planktonic foraminifers. The boundary between upper and middle Miocene was placed within Core 123-765B-38X, based on the occurrence of poorly preserved planktonic foraminiferal assemblages belonging to Zones N13 to N15. Nannofossil assemblages belonging to Zone CN6 (*Catinaster coalitus* Zone), which spans the boundary between upper and middle Miocene were observed in Core 123-765B-36X. The high frequency of magnetic reversals during the Miocene (more than 30) made the task of identifying individual reversals difficult. Therefore, polarity chrons have been only tentatively assigned in Figure 5. Chron C3Ar and C3Br probably extend from the base of Core 123-765B-18H to Core 123-765B-27X. Chron C4Ar probably includes Cores 123-765B-28X to -33X. The remainder of Hole 765B was assigned to Chron C5r.

Hole 765C

Because of poor recovery near the base of Hole 765B, Leg 123 scientists decided to begin coring in Hole 765C about 50 m above the bottom of Hole 765B. The upper part of Hole 765C, therefore, contains the same Miocene calcareous turbidites as those discussed above. Deeper in the hole, the amount of pelagic sediments increases, and the preservation of microfossils improves. In comparison to the Neogene sediments, Paleogene and Upper Cretaceous sediments are highly condensed, but contain a good record of nannofossils and planktonic foraminifers that allows for precise dating. Aptian to Cenomanian sediments still contain calcareous microfossils, but Neocomian to uppermost Jurassic sediments are largely noncalcareous. However, these sediments do contain biosiliceous intervals with well-preserved radiolarians. The chronostratigraphy of the Neocomian to uppermost Jurassic interval is based on a combination of nannofossils, radiolarians, palynomorphs, and benthic foraminifers.

The chronostratigraphy of Hole 765C is constrained by a total of 80 biostratigraphic and magnetostratigraphic events (Table 2). These events, together with the ones from Hole 765B, were used to construct an age-vs.-depth plot (Fig. 6) that yields apparent sedimentation rates. A magnetobiostratigraphic summary of Hole 765C is presented in Figures 7A and 7B. Because of rapidly

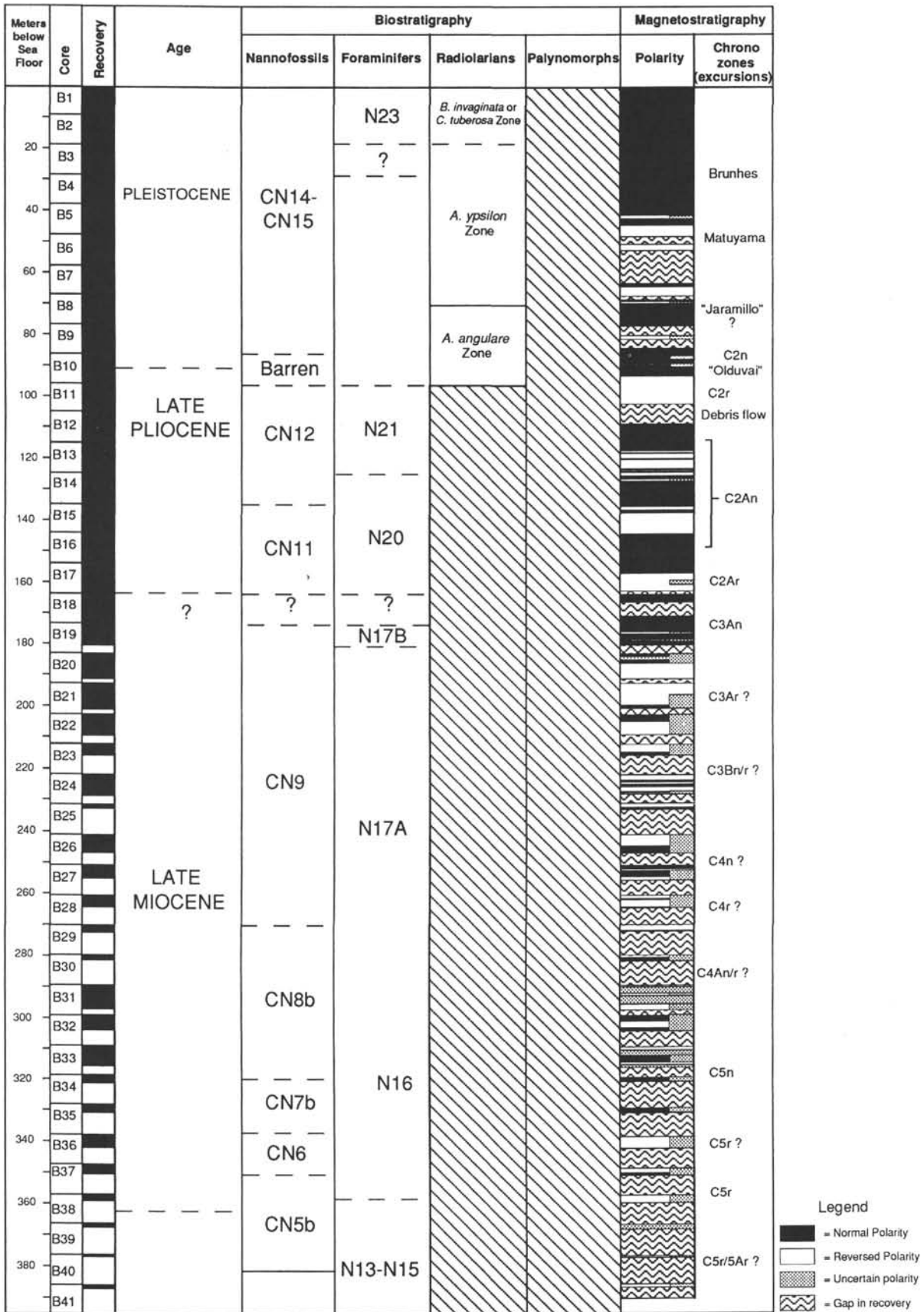


Figure 5. Magnetobiostratigraphic synthesis and chronostratigraphy of Hole 765B.

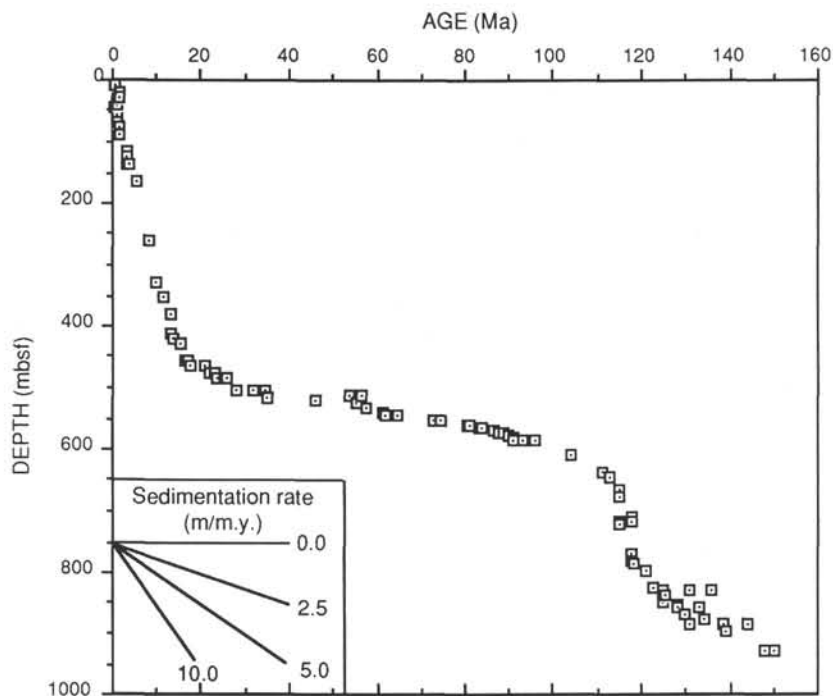


Figure 6. Age-depth curves for Holes 765B and 765C, derived from magnetobiostratigraphic data in Tables 1 and 2.

changing sedimentation rates caused by turbidites and the presence of several hiatuses, the magnetic polarity chron assignments are tentative, and are based on the GPTS (Fig. 2).

Cenozoic

Calcareous turbidites recovered in the upper 12 cores of Hole 765C are assigned to the middle Miocene, based on nannofossils and planktonic foraminifers. Samples 123-765C-11R-CC and -12-CC belong in planktonic foraminifer Zone N8 (lower part of middle Miocene). This age is supported by calcareous nannofossil Zone CN4. The boundary between the lower and middle Miocene was placed within the debris flow recovered in Core 123-765C-13R. Sample 123-765C-13R-CC contains well-preserved lower Miocene assemblages with *Globoquadrina binaiensis*, *Catapsydrax unicavus*, and *Catapsydrax dissimilis*, belonging to planktonic foraminifer Zone N5, as well as the nannofossils *Sphenolithus heteromorphus* and *Calcidiscus macintyreii*, which identify Zone CN4. Approximately at the level of the early/middle Miocene debris flow, an abrupt change in the sedimentation rate was observed, from about 26.6 m/m.y. in the middle and upper Miocene to approximately 1.8 m/m.y. in the lower Miocene and Paleogene. Sample 123-765C-14R-CC was assigned to the planktonic foraminifer Zone N4B (basal Miocene) and to nannofossil Subzone CN1c (*Discoaster druggi*), based on the presence of *D. druggi* and the absence of *S. belemnos*. This indicates a condensed horizon or hiatus is present within Core 123-765C-14R, and represents at least 4.4 m.y. The Oligocene/Miocene boundary was placed within Core 123-765C-15X. Sample 123-765C-16R-4, 94–96 cm, contains *Globigerinoides primordius* and *Globigerina angulisurealis*, which identify the uppermost Oligocene planktonic foraminifer Zone N4A. Sample 123-765C-16R-CC was assigned to upper Oligocene nannofossil Zone CP19b (*Dictyococcites bisectus*), based on the presence of *Sphenolithus ciperoensis* and the absence of *S. distentus*. Samples 123-765C-17R-1, 70–71 cm, through 123-765C-18R-1, 39–40 cm, were assigned to Subzone CP19a (*Cyclicargolithus floridanus*), based on the presence of *Sphenolithus ciperoensis* with *S. distentus*. The lower

Oligocene is represented in Sample 123-765C-18R-2, 134–136 cm, which was placed in nannofossil Subzone CP16c (*Reticulofenestra hillae*), based on the occurrence of *R. umbilicata* and common *Helicopontosphaera reticulata* and the absence of *Ericsonia formosa* and *S. distentus*. This suggests an extremely condensed section or hiatus is present within the upper part of Core 123-765C-18R that represents approximately 4.4 m.y. of no deposition.

Eight reversed polarity zones were recognized in Cores 123-765C-15R to -18R. Magnetic polarity zones in Core 123-765C-16R may be correlated with Chrons C7 or C7A, and the three reversals recorded in Core 123-765C-17R may be correlated with Chron C8r, Subchron C9-1r, and Chron C9r. Because of the hiatus in Core 123-765C-18R, the polarity zones may be correlative with Chrons C12 through C12r.

The boundary between Eocene and Oligocene is represented by a significant turnover in nannofossil assemblages within Section 123-765C-19R-1. Sample 123-765C-19R-1, 128–129 cm, is placed in lower Oligocene Subzone CP16b (*E. formosa*), but Sample 123-765C-19-2, 105–109 cm, belongs in Subzone CP15b (*Isthmolithus recurvus*), based on the FO of *R. umbilica* and *I. recurvus*. The next sample (123-765C-19R-2, 120 cm) contains lower Eocene sediments assigned to nannofossil Subzone CP12a (*Discoasteroides kuepperi*), based on the presence of *Discoaster subloboensis* and *D. kuepperi* and the absence of *Nannotetrina quadrata*. This indicates a hiatus is present in Section 123-765C-19R-2 that spans at least 13.7 m.y. The lowest Eocene sample is 123-765C-20R-CC, which was placed in Subzone CP9b (*Discoaster binodosus*), based on the FOs of *Tribrachiatus orthostylus* and *Discoaster diastypus*, and the absence of *D. lodoensis*. Because of the hiatuses and poor recovery in Cores 123-765C-19R to -21R, the magnetic-polarity reversal pattern was difficult to interpret.

The Paleocene is represented in Cores 123-765C-21R and -22R. Sample 123-765C-21R-1, 16–17 cm, contains a nannoflora of late Paleocene age and was placed in Zone CP8 (*Discoaster multiradiatus*), based on the presence of *Fasciculithus tympani-*

Table 2. Chronostratigraphy of Hole 765C, showing 80 biostratigraphic and magnetostratigraphic events.

	Datum/zone	Interval	Age (Ma)	Chronostratigraphy	Reference
F	FO <i>Globigerina nepenthes</i>	1R, CC to 2R, CC	11.3	middle Miocene	Berggren et al., 1985
N	FO <i>Catinaster coalitus</i>	1R, CC to 2R, CC	11.3	middle Miocene	Berggren et al., 1985
N	FO <i>Discoaster kugleri</i>	4R, CC to 6R, CC	13.1	middle Miocene	Berggren et al., 1985
F	FO <i>Globorotalia fohsi</i>	7R-2,126 to 8R-2,76	13.1	middle Miocene	Berggren et al., 1985
F	FO <i>Globorotalia praefohsi</i>	8R-2,76 to 8R, CC	13.9	middle Miocene	Berggren et al., 1985
F	FO <i>Orbulina suturalis</i>	9R, CC to 10R, CC	15.2	middle Miocene	Berggren et al., 1985
F	FO <i>Globigerinoides sicanus</i>	12R, CC to 13R, CC	16.6	earliest middle Miocene	Berggren et al., 1985
N	FO <i>Sphenolithus heteromorphus</i>	12R, CC to 13R, CC	17.1	late early Miocene	Berggren et al., 1985
F	LO <i>Catapsydrax dissimilis</i>	12R, CC to 13R, CC	17.6	late early Miocene	Berggren et al., 1985
F	FO <i>Globigerinoides altiaperturnus</i>	13R, CC to 14R, CC	20.9	early Miocene	Berggren et al., 1985
F	LO <i>Globorotalia kugleri</i>	13R, CC to 14R, CC	21.8	early Miocene	Berggren et al., 1985
F	FO <i>G. kugleri</i>	15R, CC to 16R, CC	23.7	Oligocene/Miocene	Berggren et al., 1985
N	FO <i>Discoaster druggi</i>	14R, CC to 16R-1,132	23.2	earliest Miocene	Berggren et al., 1985
N	LO <i>Sphenolithus ciperoensis</i>	14R, CC to 16R-1,132	25.2	latest Oligocene	Berggren et al., 1985
F	FO <i>Globigerinoides primordius</i>	15R, CC to 16R-4,95	25.8	latest Oligocene	Berggren et al., 1985
N	LO <i>Sphenolithus distentus</i>	17R-1,70 to 17R-2,79	28.2	late Oligocene	Berggren et al., 1985
N	FO <i>S. distentus</i>	18R-1,39 to 18R-2,39	34.2	early Oligocene	Berggren et al., 1985
F	FO <i>Globigerina angulisuturalis</i>	18R-1,5 to 18R, CC	31.6	late early Oligocene	Berggren et al., 1985
F	LO <i>Pseudohastigerina</i>	18R-1,5 to 18R, CC	34	early Oligocene	Berggren et al., 1985
N	LO <i>Reticulofenestra umbilicata</i>	18R-1,39 to 18R-2,134	34.6	early Oligocene	Berggren et al., 1985
N	LO <i>Isthmolithus recurvus</i>	19R-1,105 to 19R-1,128	34.9	early Oligocene	Berggren et al., 1985
F	LO <i>Morozovella aragonensis</i>	18R, CC to 19R, CC	46	middle Eocene	Berggren et al., 1985
N	FO <i>Discoaster subloadoensis</i>	19R-3,112 to 19R, CC	52.6	latest early Eocene	Berggren et al., 1985
F	FO <i>M. aragonensis</i>	20R-2,52 to -2,81	55.2	early Eocene	Berggren et al., 1985
N	occ. <i>Tribrachiatum orthostylus</i>	19R-1,11	56.6-53.7	early Eocene	Berggren et al., 1985
N	LO <i>Fasciculithus</i>	20R, CC to 21R-1,16	57.4	latest Paleocene	Aubry et al., 1988
N	FO <i>Heliolithus kleinPELLI</i>	22R-2,2 to 22R-3,2	61.6	late Paleocene	Berggren et al., 1985
N	FO <i>Fasciculithus typaniformis</i>	22R-3,2 to 22R-4,19	62	earliest late Paleocene	Berggren et al., 1985
N	FO <i>C. tenuis</i>	23R-1,17 to 22R-4,108	64.8	early Paleocene	Berggren et al., 1985
N	LO <i>Tranolithus phacelosus</i>	23R-1,17 to 22R-4,108	73-75.5	latest Camp.-earliest Maes.	Sissingh, 1977
BF	occ. <i>H. ovulum gigantea</i>	22R, CC	80-66.4	mid Camp. to latest Maes.	Geroch and Nowak, 1984
M	Top of Chron C33	23R-2	74.5	Campanian/Maestrichtian	Berggren et al., 1985
N	FO <i>Ceratolithoides aculeus</i>	23R, CC to 24R-1,147	80.5	middle Campanian	Sissingh, 1977
F	occ. <i>Globotruncana elevata</i>	24R-1	81-84.5	early Campanian	Caron, 1985
N	<i>Aspidolithus parvus-C. obscurus</i>	24R-1 to 24R-3	81-83.5	early Campanian	Sissingh, 1977
N	<i>Calculites obscurus</i> Zone	24R-4	83.5-84.5	latest Sant.-earliest Camp.	Sissingh, 1977
M	Top Cretaceous quiet zone	24R-3	84	Campanian/Santonian	Berggren et al., 1985
F	<i>Dicarinella primitiva</i> Zone	25R-1, 103	87.5-88	late Coniacian	Caron, 1985
N	occ. <i>Micula decussata</i>	25R-1, 13	86.5-87.5	early Santonian	Sissingh, 1977
N	occ. <i>Marthasterites furcatus</i>	25R-2, 46	88.7-88.5	Coniacian	Sissingh, 1977
N	occ. <i>Eiffellithus eximus</i>	25R-3, 138	88.5-89.5	late Turonian	Sissingh, 1977
N	<i>Quadrum gartneri</i> Zone	25R-4,140 to 26R-1,25	89.5-91	early-mid Turonian	Sissingh, 1977
F	occ. <i>Marginotruncana sigali</i>	25R, CC	88.5-89.5	late Turonian	Caron, 1985
N	LO <i>Corollithion kennedyi</i>	26R-1,25 to -1,128	91	late Cenomanian	Perch-Nielsen, 1985
N	FO <i>C. kennedyi</i>	26R-5,25 to 26R,CC	96	early Cenomanian	Perch-Nielsen, 1985
F	<i>Rotalipora cushmani</i> Zone	26R-4, 79	91-93	latest Cenomanian	Caron, 1985
BF	LO <i>Plectrorecurvovoides alternans</i>	26R-4,79 to 26R, CC	94	early Cenomanian	Geroch and Nowak, 1984
N	FO <i>Eiffellithus turriseiffelii</i>	26R-3,32 to 27R-1,90	92-100	late Albian-early Cenom.	Sissingh, 1977
N	FO <i>Tranolithus phacelosus</i>	28R, CC to 29R-1	104	Albian	Perch-Nielsen, 1985
N	FO <i>Prediscosphaera columnata</i>	32R-1,27 to 32R-	111	Albian	Sissingh, 1977
P	FO <i>Canningopsis intermedia</i>	33R-1,38 to 34R-1,130	113	earliest Albian	Helby et al., 1987
N	FO <i>Hayesites albiensis</i> and <i>E. floralis</i>	34R, CC to 35-	115	late Aptian	Sissingh, 1977
P	<i>Diconodinium davidii</i> Zone	33R-1,38 to 35R, CC	113-115	late Aptian	Helby et al., 1987
F	<i>G. algeriana-H. gorbachikae</i>	34R, CC	113-115	late Aptian	Caron, 1985
N	FO <i>Praediscosphaera columnata</i>	36R-1,136 to 36R-5,116	118	early mid Albian	Mutterlose, this volume
N	FO <i>Rutinolithus irregularis</i>	39R-4,30 to 39R-5,4	118	base Aptian (Chron M0)	Bralower, 1987
F	LO <i>Hedbergella delrioensis</i>	39R, CC to 40R-1,10	118?	Aptian	Caron, 1985
N	FO <i>Chiaostygyx litterarius</i>	40R-4,30 to 40R-4,128	118	base Aptian (Chron M0)	Bralower, 1987
N	FO <i>Rhagodiscus angustus</i>	40R-4,30 to 40R-4,128	115	mid Aptian	Thierstein, 1971
P	<i>Odontochitina operculata</i>	40R, CC & 45R, CC	115-118	early Aptian	Helby et al., 1987
R	<i>Sethocapsa euganea</i> Zone	42R-3,140 to 45R-5,52		early Aptian	Shaaf, 1985
F	occ. <i>Caucasella hoterivica</i>	45R, CC	128-130	Haut.-early Aptian	Caron, 1985
P	upper <i>Muderongia australis</i> Zone	47R-3,139 to 52-1,150	118-125	late Barremian	Helby et al., 1987
M	Top of Chron M0	47-1 or higher	118	earliest Aptian	Berggren et al., 1985
M	Bottom of Chron M0	47-4, 66	118.5	basal Aptian	Ogg (unpubl. data)
R	LO <i>Pseudodictyomitra lilyae</i>	48R, CC to 49R-2,39	~121	upper Barremian	Schaaf, 1981
M	Top of Chron M3	51R-5, 131	123	late mid Barremian	Ogg and Steiner, 1988
R	FO <i>Eucyrtis tenuis</i>	52R-2,68 to 52R, CC	~131	early Haut.	Sanfilippo and Riedel, 1985
R	FO <i>Eucyrtis columbaria</i>	52R-2,68 to 52R, CC	136	mid Valanginian	Sanfilippo and Riedel, 1985
M	Bottom of Chron M3	53R-1, 76	125.5	early mid Barremian	Ogg and Steiner, 1988
P	lower <i>Muderongia australis</i> Zone	54R-4,50 & 54, CC	125-128	latest Valan.-early Barr.	Helby et al., 1987
N	<i>N. columi-C. oblongata</i> zones	55R-1 & 58R-1	128-144	late Berr.-early Haut.	Sissingh, 1977
N	occ. <i>Crucellipsus cuvillieri</i>	55R-1, 41	>128	LAD in Chron M8	Bralower, 1987
N	occ. <i>Speetonia colligata</i>	56R-3,142 & 56R-2,60	130	base Berr.-mid Haut.	Mutterlose, this volume
N	LO <i>Turbodiscus veranae</i>	55R-1,120 to 55R-2,110	133	Chron M11n	Bralower, 1987
BF	occ. <i>Praedorothia praeauteriviana</i>	56R, CC	131.5-138.5	Valanginian	Kaminski et al., this volume

Table 2 (continued).

	Datum/zone	Interval	Age (Ma)	Chronostratigraphy	Reference
R	LO <i>Podocapsa amphitrepera</i>	56R, CC to 57R-4, 51	~134	late Valanginian	Schaaf, 1985
N	FO <i>Turbodiscus veranae</i>	58R-1,85 to 58R-1,131	~138.5	Base Valanginian	Bown et al., 1988
N	FO <i>Lithraphidites carniolensis</i>	58R-1,131 to 58R-2,140	144	base Berriasian	Perch-Nielsen, 1985
R	LO <i>Obesocapsula rotunda</i>	58R-3,31 to 58R-3,89	131	late Hauterivian	Schaaf, 1985
P	<i>Batioladinium reticulatum</i> Zone	59R-4,105 & 59R-5,8	>139	late Berriasian	Helby et al., 1987
N	FO <i>Microstaurus chiastius</i>	62R-1,53 to 62-4,25	~150	middle Tithonian	Bralower et al., 1989
R	FO <i>Holocryptocanium barbui</i>	62R-1,53 to 62-4,25	~148	late Tithonian-early Berrias.	Baumgartner, this volume

formis, *Toweius eminens*, *Chiasmolithus bidens*, *Discoaster nobilis*, *D. mohleri*, and rare *D. multiradiatus* in the absence of *D. diastypus*. The upper portion of Core 123-765C-22R belongs in Zones CP5 to CP6, based on the co-occurrence of *F. tympaniformis*, *T. eminens*, *Heliolithus kleinpelli*, and very rare *D. mohleri* in Sample 123-765C-22R-2, 2 cm. Lower in the core, Sample 123-765C-22R-3, 2–3 cm, was placed in Zone CP4 (*F. tympaniformis*) based on the presence of the nominate species in the absence of *H. kleinpelli*. The FO of *Cruciplacolithus tenuis* in Sample 123-765C-22R-4, 108 cm, indicates the presence of nanofossil Zone CP1b (*C. tenuis*).

Upper Cretaceous

The Cretaceous/Tertiary boundary is located in an interval of condensed, noncalcareous claystones in Section 123-765C-22R-5. The highest sample of undoubted Cretaceous age is Sample 123-765C-22R-CC. This sample is barren of calcareous microfossils, but yielded an agglutinated foraminiferal assemblage with *Hormosina ovulum gigantea* and *Bolivinooides parvissimus*, belonging to the late Campanian to Maestrichtian *H. ovulum gigantea* Zone of Gerösch and Nowak (1984). The last occurrence of *H. ovulum gigantea* is an excellent indicator of the K/T boundary in the Atlantic region (Berggren and Kaminski, 1990). However, the presence of *B. parvissimus* suggests that Sample 123-765C-22R-CC may be from the lower part of the *H. ovulum gigantea* Zone (upper Campanian to lower Maestrichtian), based on comparisons to Atlantic Ocean Site 543 (Hemleben and Troester, 1985). The highest level with exclusively Cretaceous plankton is Sample 123-765C-23R-1, 17 cm. This sample contains *Quadrum trifidum*, *Reinhardtites levis*, *Q. gothicum*, and *Ceratolithoides aculeus*, which are characteristic of nanofossil Zone CC23 (*Q. trifidum* and *T. phacelosus*). Because *Aspidolithus parvus constrictus*, a species whose LO marks the Campanian/Maestrichtian boundary, is present in this assemblage, the sample may be assigned a Campanian age. Therefore, the entire lower Danian and Maestrichtian may be represented by the condensed noncalcareous interval in Section 123-765C-22R-5.

The Upper Cretaceous in Hole 765C is represented by a 30-m-thick condensed section of claystone and fine-grained calcareous turbidites between Sections 123-765C-23R-1 and 123-765C-26R-1, deposited with an average sedimentation rate of 1.7 m/m.y. Nanofossil zones in the Turonian to Maestrichtian have estimated durations of between 1.0 and 2.5 Ma and provide the best chronostratigraphic resolution.

The interval between Samples 123-765C-23R-2, 20 cm, and 123-765C-23R-CC is of late Campanian age (*C. aculeus* Zone CC20 to *Q. trifidum* Zone CC22), based on the presence of *C. aculeus*, *Q. gothicum*, *R. levis*, *A. parvus constrictus*, and *Eiffelolithus eximus*. The early Campanian (*A. parvus* Zone CC18 and *C. ovalis* Zone CC19) is represented by the occurrence of *R. anthrophorus*, *E. eximus*, *M. furcatus*, *A. parvus*, and *A. parvus constrictus* from Samples 123-765C-24R-1, 147 cm, to 123-765C-24R-3, 57 cm. The reversed-polarity zones located in the upper portion of Core 123-765C-23R are probably correlative with Chrons C32.1r or C32r. Accordingly, the reversed-polarity zone

within Sections 123-765C-24R-2 and -24R-3 may be Chron 33r of Campanian age.

Santonian nanofloras were recovered from Sections 123-765C-24R-4 to 123-765C-25R-1. Diagnostic species in this interval are *Quadrum gartneri*, *M. decussata*, *R. anthrophorus*, and *M. furcatus*, including *Lithastrinus septenarius* in Sample 123-765C-24R-CC, which indicate the presence of Zones CC14 (*M. decussata*) to CC15 (*R. anthrophorus*) or possibly even CC17 (*C. obscurus*). Because the genera *Lucianorhabdus* and *Calculites* are rare or absent, it is not clear whether Zones CC16 (*L. maleformis*) and CC17 (*C. obscurus*) are absent or simply unrecognizable because of environmental factors. If these zones are missing, a hiatus is present between the upper lower Santonian Zone CC15 and the lower Campanian Zone CC18.

The Coniacian is present in the upper portion of Core 123-765C-25R. The presence of a planktonic foraminiferal assemblage dominated by *Dicarinella* was found in Sample 123-765C-25R-1, 103–105 cm. This sample contains *D. algeriana* and *D. canaliculata*, together with *Marginotruncana pseudolinneiana*, and belongs in the Coniacian *Dicarinella primitiva* Zone of Caron (1985).

The Turonian is present in the lower portion of Core 123-765C-25R and the first section of Core 123-765C-26R. Samples 123-765C-25R-4, 140 cm, and 123-765C-26R-1, 25 cm, were assigned to nanofossil Zone CC11 (*Q. gartneri*) based on the presence of *Q. gartneri*, *E. turris-eiffelii*, *E. floralis*, and *L. moratus*.

The Cenomanian/Turonian boundary corresponds to the interval of dark reddish and interbedded black shales in Section 123-765C-26R-1, between 50 and 115 cm. The highest Cenomanian nanofossil assemblage was observed in Sample 123-765C-26R-1, 128 cm, which contains *Corollithion kennedyi*, indicating Zone CC10 (*Microrhabdulus decoratus*). The upper Cenomanian is still present in Sample 123-765C-26R-4, 79–84 cm, which contains a planktonic foraminiferal assemblage with *Rotalipora greenhornensis*, *R. reicheli*, *R. appenninica*, *Praeglobotruncana stephani*, *P. gibba*, and *P. delrioensis*. This assemblage contains elements of the *Rotalipora reicheli* and *Rotalipora cushmani* zones of Caron (1985).

Lower Cretaceous

The Albian/Cenomanian boundary lies between Sample 123-765C-26R-5, 25–26 cm, and Sample 123-765C-27R-1, 30–31 cm. The FO of *C. kennedyi*, which approximates the Zone CC9/CC10 boundary, was observed in Sample 123-765C-26R-5, 25–26 cm, whereas Section 123-765C-27R-1 contains the FO of *E. turris-eiffelii*, which marks the base of Zone CC9. The interval between Samples 123-765C-27R-1, 89 cm, and 123-765C-32R-1, 110 cm, lies in Zone CC8 (*P. columnata*), which is of Albian age.

The Aptian/Albian boundary is contained within nanofossil Zone CC7b (*C. litterarius*). This zone was recognized between Samples 123-765C-32R-1, 110 cm, and 123-765C-34R-CC. However, the highest dinoflagellate assemblages observed in the hole, in Sample 123-765C-33R-1, 38–40 cm, are upper Aptian based on the occurrence of *Diconodinium davidii* and *Pseudoceratium turneri*.

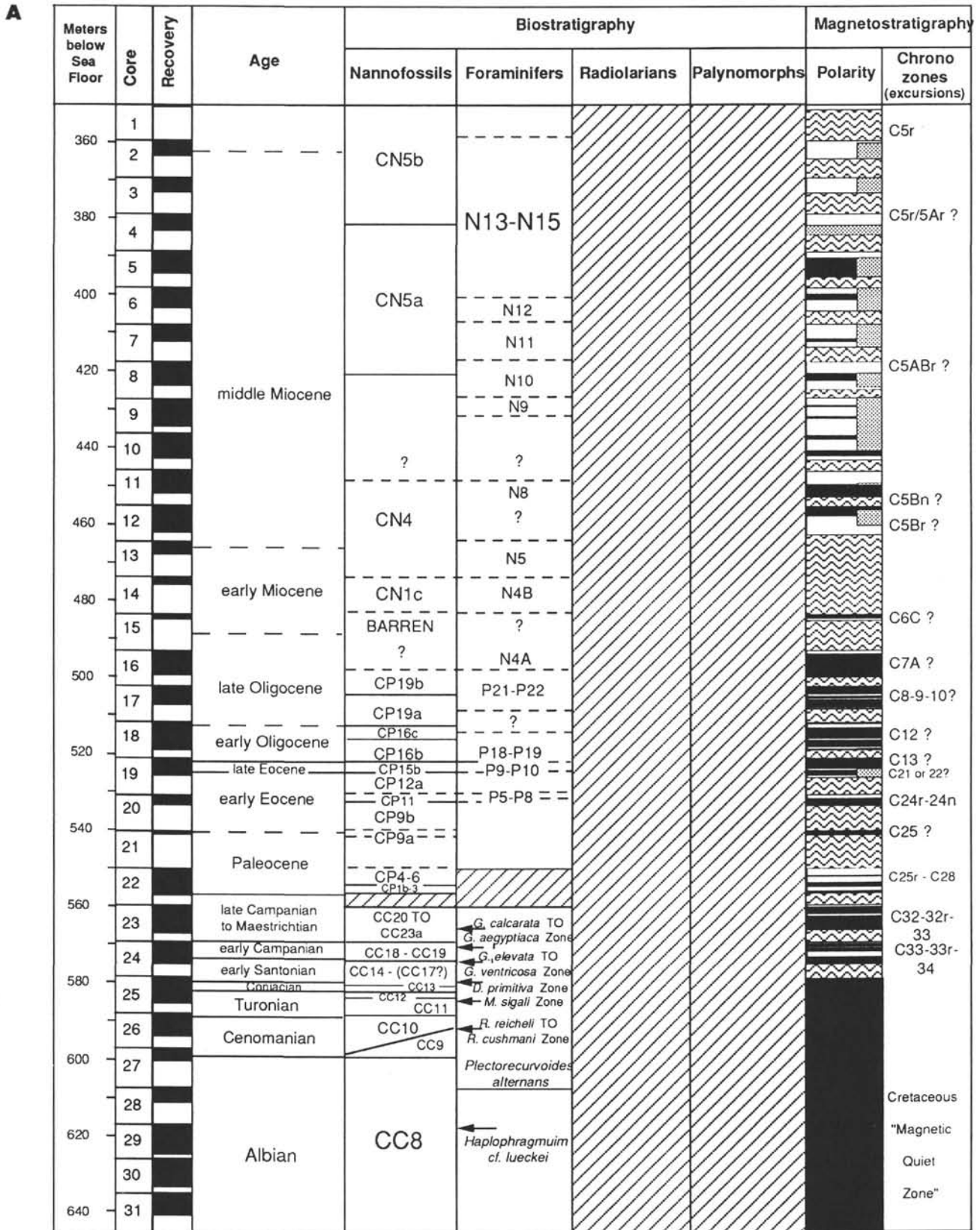


Figure 7. Magnetobiostratigraphic synthesis and chronostratigraphy of Hole 765C (in two parts). **A.** Middle Miocene to Albian. **B.** Albian to Tithonian.

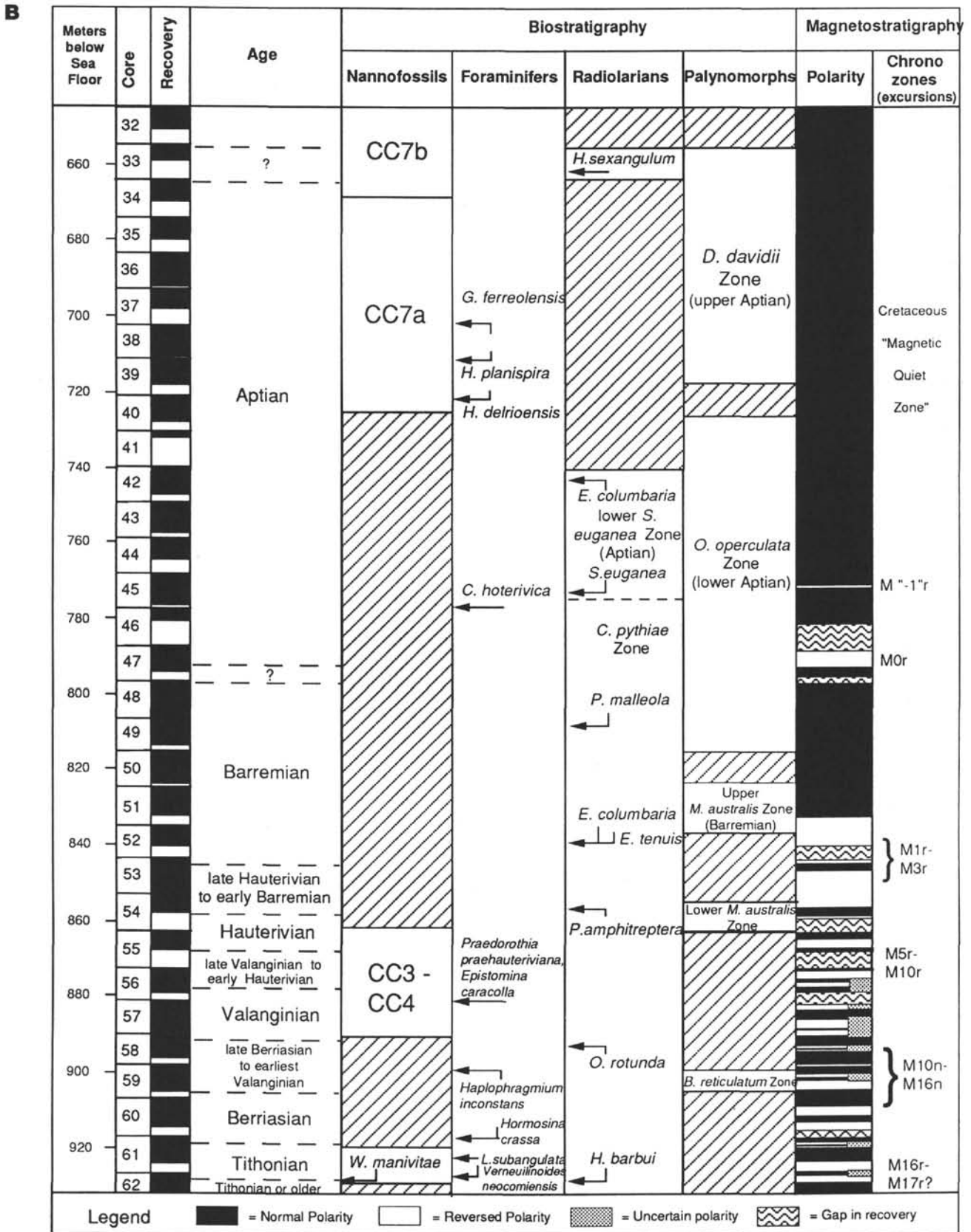


Figure 7 (continued).

These assemblages are equivalent to the upper Aptian *D. davidii* Zone of Helby et al. (1987). This sample, however, already displays features that are transitional to the overlying *Muderongia tetracantha* Zone, which spans the Aptian/Albian boundary. An upper Aptian nannofossil assemblage was observed in Sample 123-765C-40R-4, 30 cm. This assemblage consists of *Rhagodiscus angustus*, *C. litterarius*, *Eprolithus apertior*, *E. varolii*, and *Flabellites biforaminis*. The FO of *R. angustus* defines the base of the upper Aptian *R. angustus* Zone of Perch-Nielsen (1985), while the other species have their FOs in the lower Aptian. However, most samples from Cores 123-765C-41R through 123-765C-54R are barren of nannofossils, so we probably did not observe the FOs of these species. The interval between Samples 123-765C-40R-4, 138–140 cm, and 123-765C-49R-CC contains the dinoflagellate *Odontochitina operculata*, but lacks *D. davidii* and *P. turneri* and is equivalent to the lower Aptian *O. operculata* Zone of Helby et al. (1987). The interval between Sample 123-765C-42R-3, 60–62 cm, and 123-765C-45R-5, 52–55 cm, yields abundant, moderately well-preserved radiolarian assemblages assignable to the lower *Sethocapsa euganea* Zone (Schaaf, 1985), indicating an early Aptian age. The highest reversed-polarity zone in the Lower Cretaceous of Hole 765C is a narrow, but clearly defined, event spanning only 43 cm in Section 123-765C-45R-2 (Ogg et al., this volume). This event corresponds to M “-1”r, which has been correlated to the late Aptian *G. algerianus* foraminiferal Zone (Vandenberg and Wonders, 1980). The Barremian/Aptian boundary is placed near the base of Core 123-765C-47R, based on magnetostratigraphy. Polarity Chron M0r, marking the base of the Cretaceous quiet zone, is observed in a 4-m-thick interval from Samples 123-765C-47R-1, 95 cm, to 123-765C-47R-4, 66 cm. The Barremian/Aptian stage boundary, which occurs just prior to Chron M0 (Channell et al., 1979), is therefore near the base of Core 123-765C-47R. According to Helby et al. (1987), the palynological Barremian/Aptian boundary can be placed at the boundary between the *O. operculata* Zone and the underlying *Muderongia australis* Zone. The highest occurrence of the *M. australis* Zone, characterized by the absence of *O. operculata* and an abundance of *Herendeenia postprojecta*, was observed in Sample 123-765C-50-CC. A radiolarian assemblage recovered from Sample 123-765C-49R-2, 39–43 cm, contains the FO of (?) *Parvicingula malleola*, together with *Eucyrtis tenuis*, *E. columbaria*, and *Sethocapsa leiostraca*. This assemblage is characteristic of the upper Barremian. A radiolarian assemblage in Sample 123-765C-52R-2, 68–71 cm, contains the FOs of *Eucyrtis tenuis* and *E. columbaria*, indicating a late Hauterivian to early Barremian age. Samples 123-765C-54R-4, 49–50 cm, and -54R-CC contain the dinoflagellate *Phoberocysta neocomica*, indicating the lower *M. australis* Zone, which has been reported as late Hauterivian to Barremian in age (Helby et al., 1987). However, these samples are still of Barremian age, based on magnetostratigraphy. The base of polarity Chron M3 was observed in Sample 123-765C-53R-1, 76 cm. This correlates with the lower mid-Barremian, according to Ogg and Steiner (1988).

Because of patchy preservation and the lack of distinctive microfossils, our placement of chronostratigraphic boundaries beneath Chron M3 in Core 123-765C-53R is approximate and is based mainly on interpolation using the sediment accumulation rate curve (Kaminski et al., this volume). The highest Hauterivian nannofossil assemblage was found in Sample 123-765C-56R-1, 85 cm. This sample contains the highest occurrence of *Crucellipsis cuvillieri*, which according to Bralower (1987) ranges no higher than Chron M8 (upper Hauterivian). This age is corroborated by the occurrence of *Speetonian colligata* in Sample 123-765C-56R-2, 60–61 cm. In other areas, *S. colligata* ranges from the base of the Berriasian to the middle Hauterivian (Mutterlose, this volume). The LO of the radiolarian *Obesacapsula rotunda*

was observed in Sample 123-765C-58R-3, 89–93 cm, indicating an age no younger than late Hauterivian.

We were unable to precisely delineate the Valanginian/Hauterivian and Berriasian/Valanginian boundaries biostratigraphically because of the lack of biostratigraphic markers and the presence of barren intervals. The highest Hauterivian nannofossil assemblage was observed in Sample 123-765C-55R-3, 50 cm, indicated by the presence of the nannofossils *Tegumentum tripes* (= *Eiffellithus windii* auct.) and *Crucellipsis cuvillieri*. The interval from the top of Core 123-765C-55R to the middle of Core 123-765C-56R was assigned a late Valanginian to Hauterivian age, based on the LO of *Turbodiscus veranae* in Sample 123-765C-56R-3, 142 cm. An early Valanginian age was assigned to Section 123-765C-58R-1, based on the FOs of *T. tripes* in Sample 123-765C-58R-1, 56 cm, and *T. venerae* in Sample 123-765C-58R-1, 85 cm. In the Umbrian Apennines, the first occurrence of these species is in the lower Valanginian (Bralower et al., 1989). Another useful tie point is provided by the occurrence of the upper Berriasian *Batioladinium reticulatum* Zone of Helby et al. (1987) in Samples 123-765C-59R-4, 105–112 cm, and 123-765C-59R-5, 8–9 cm.

Basaltic basement was encountered at a depth of 931.2 mbsf in Section 123-765C-62R-4. Samples taken directly above basement (i.e., 123-765C-62R-2, 13 cm, to 123-765C-62R-4, 31 cm) are barren of nannofossils. Although the base of the sedimentary section in Hole 765C was originally described as upper Berriasian based on shipboard biostratigraphic analyses (e.g. Shipboard Scientific Party, 1990; von Rad et al., 1989), more detailed analyses of nannofossils in Cores 123-765C-61R and the upper portion of Core 123-765C-62R yield a Tithonian age, based on the occurrence of abundant, large *Watznaureria manivittae* (= *Cyclogelosphaera deflandrei* auct.), which correlates well with similar Tithonian assemblages in Hole 261 (Dumoulin and Bown, this volume). The lowest nannofossil assemblage was observed in Sample 123-765C-62R-2, 13 cm. This sample contained a poorly preserved, low-diversity assemblage with *Watznaureria manivittae*, *W. barnsae*, *W. britannica*, *W. fossaoincta*, *Cyclogelosphaera deflandrei*, *Microstaurus chiastius*, and *M. quadratus*. These species cannot pinpoint the age of this assemblage, but can provide a lower limit. Bralower et al. (1989) reported *M. quadratus* ranges upward from the middle Tithonian in the Umbrian area of Italy. Mutterlose (this volume) assigned a Tithonian age to this assemblage, based on the absence of *Lithraphidites carniolensis* and *Rotelapillus laffitei*, which range upward from the Tithonian/Berriasian boundary in other areas (Perch-Nielsen, 1985). Dumoulin and Bown (this volume) regard this assemblage as Tithonian, based on detailed correlations with DSDP Site 261. The FO of *L. carniolensis* was observed in Sample 123-765C-58R-1, 131 cm. Mutterlose (this volume) does not regard its absence from assemblages lower in the hole to be an artifact of preservation, because the species is present in poorly preserved assemblages higher in the section. However, the lowest radiolarian assemblages in Hole 765C yield age data that conflict with the nannofossils. The assemblages found in Sample 123-765C-62R-1, 53–56 cm, contain typical specimens of *Holocryptocanium barbui*, a species that ranges upward from the upper Berriasian in the Tethys region. The presence of *Cryptamphorella* sp., *Xitus* sp., *Sethocapsa* sp., aff. *S. cetia*, and *Archaeodictyomitra* sp. aff. *A. sliteri*, in addition to *H. barbui*, indicate a Cretaceous age according to Baumgartner (this volume). None of these species have been previously recorded in samples of Late Jurassic age, at least in the Tethys region. All the above-mentioned taxa range to the top of Core 123-765C-59R.

The age of those sediments directly above basement is crucial, because we had expected a Kimmeridgian to Oxfordian age of basement from the position of the site on marine magnetic anom-

aly M26. According to the plate tectonic scenario proposed by Audley-Charles et al. (1988) and Fullerton et al. (1989), the Argo Abyssal Plain at Site 765 formed during the Late Jurassic (~164 Ma), when seafloor spreading transported a long continental block (southern Tibet and Burma) away from northwestern Australia. Assuming that this scenario is correct, a hiatus or an extremely condensed horizon accounting for 15 m.y. of no deposition separates the base of the dated sedimentary section in Hole 765C from oceanic basement. However, Dumoulin and Bown (this volume) point out that the 4.5-m-thick barren interval beneath the *W. manivatae* Zone in Hole 765C is thicker than a similar barren interval in Hole 261, which they consider as evidence that the base of Hole 765 is as old, if not older, than the base of Hole 261. Nevertheless, the lack of microfossils having ranges restricted to the Jurassic renders our age assignment for the base of the sedimentary section speculative. This Late Jurassic age for the base of the sedimentary section is based on microfossil absences and lithologic correlations to Site 261.

SITE 766

Site 766 is located at 19°55.92'S, 110°27.24'E, at the foot of the western escarpment of the Exmouth Plateau, at a water depth of 3997.5 m. The site is situated on marine magnetic anomaly M10, of late Valanginian age. Only one rotary core barrel hole (Hole 766A) was drilled at the site, and because of time limitations, plans for a second APC hole had to be canceled. Drilling in Hole 766A recovered 466.7 m of sediment in 49 cores, with an average recovery of 66%. Sediments range in age from Pleistocene to late Valanginian-early Hauterivian.

Biostratigraphy of Cenozoic and Upper Cretaceous calcareous oozes was accomplished mainly using nannofossils and foraminifers. Radiolarians are present in the Pleistocene and Lower Cretaceous sections. Palynomorphs provide the most detailed biostratigraphic dating from the Barremian to the base of the hole. Magnetostratigraphy produced stable results only in the Lower Cretaceous. Dinoflagellate assemblages yield an age of late Valanginian for sediment directly overlying basement and between diabase sills at the base of the hole. The occurrences of stratigraphically important species are compiled in Table 3, and these were used to construct an age-vs.-depth plot (Fig. 8) that gives the apparent sedimentation rates. A summary of the biostratigraphic and magnetostratigraphic results of Hole 766A is presented in Figure 9.

Cenozoic

Foraminifers and nannofossils are generally well preserved in the Cenozoic, and there is little evidence of reworking. Both nannofossils and planktonic foraminiferal assemblages display a temperate, or mid-latitude, nature. For example, the mid-latitude *Amaurolithus delicatus* Subzone (CN10d) of Bukry (1981) could be applied, and *Globorotalia puncticulata*, a good marker species in the northern Atlantic Ocean, is common in the Pliocene. Unfortunately, rotary drilling in the upper portion of the hole disrupted the sedimentary fabric and reset the magnetization. The homogenized outer region of these cores dominated the half-core magnetic polarity measurements, rendering the shipboard NRM results ambiguous.

The Pleistocene is present in Core 123-766A-1R. The core-catcher sample was placed in the *Calcidiscus macintyreii* Zone of Gartner (1977) based on the presence of this species and the lack of *Emiliania huxleyi*. Planktonic foraminifers include *Globorotalia truncatulinoides* and *G. tosaensis*, indicating an early Pleistocene age.

The Pliocene is represented in Core 123-766A-2R. The core-catcher sample belongs in the *Amaurolithus delicatus* Subzone

(CN10d) of Bukry (1981), based on the common co-occurrence of *Discoaster asymmetricus* and *Amaurolithus delicatus*. The foraminiferal assemblage contains *Globorotalia puncticulata* (including morphotypes transitional to *G. inflata*), *G. margaritae*, *G. nepenthes*, *Sphaeroidinellopsis seminula*, *S. kochi*, and *Dentoglobigerina altispira*, indicating the upper portion of Zone N19. The lower Pliocene age of this sample implies a condensed Pliocene section or hiatus of about 2.0 m.y. within Core 123-766A-2R.

A major hiatus representing about 49 m.y. is present within the upper 1 m of Core 123-766A-3R. The interval between Samples 123-766A-3R-1, 119 cm, and -3R-5, 93 cm, is assigned to Zone CP12 (*D. subloensis*), based on the occurrence of the nominate taxon in association with *Discoaster tani* and *Dictyococcites callidus*. Sample 123-766A-3R-CC contains common *Camplosphaera eodela*, *Discoaster lodoensis*, and *Toweius crassus*, indicating the lower Eocene Zone CP11 (*D. lodoensis*). The foraminiferal assemblage is dominated by *Acarinina* and includes *Morozovella aragonensis* and *M. lensiformis*. The presence of these two forms with the absence of *M. subbotinae*, suggests that this sample lies in the upper part of Zone P7 or in Zone P8. Samples 123-766A-4R-CC to -6R-5, 100 cm, were placed in nannofossil Zone CP9 (*D. diastypus*), based on the occurrence of *C. eodela*, *Discoaster multiradiatus*, and *D. diastypus* and the lack of *D. lodoensis*. The absence of *Tribrachiatum contortum* or *T. orthostylus* does not permit further subdivision of this zone. The planktonic foraminiferal assemblage includes *Morozovella subbotinae*, *M. marginodentata*, *M. formosa gracilis*, and *M. aequa* and is characteristic of Zone P6, which spans the Paleocene/Eocene boundary. The lack of *M. velascoensis* in this assemblage, however, suggests a placement in the lowermost Eocene Subzone P6b.

The Paleocene is represented in Cores 123-766A-6R to -9R. Samples from Section 123-766A-6R-7 were placed in nannofossil Subzone P8b (*C. eodela*), based on the common occurrence of *C. eodela* and *D. multiradiatus* and the absence of *D. diastypus*. The next sample (123-766A-7R-CC) contains *D. multiradiatus* and *Fasciculithus tympaniformis*, but lacks *C. eodela*; it was assigned to Subzone CP8a. Zone CP7 (*D. nobilis*) was observed in Sample 123-766A-8R-1, 92–95 cm. Sample 123-766A-8R-CC belongs in Zone CP6 (*D. mohleri*), based on the common occurrence of *D. mohleri* and *F. tympaniformis* and the absence of *D. nobilis* and *Heliolithus riedelii*. Samples 123-766A-9R-4, 109–111 cm, and 123-766A-9R-5, 109–111 cm, were assigned to Zone CP2 (*Chiasmolithus danicus*), based on the occurrence of the nominate species. Sample 123-766A-9R-CC was placed in Subzone CP1b (*Cruciplacolithus tenuis*), based on the presence of common *Coccolithus pelagicus* and *Cruciplacolithus tenuis* and the absence of *Chiasmolithus danicus*. The foraminiferal assemblage in this sample is dominated by reworked Maestrichtian taxa, but contains *Subbotina pseudobulloides* and *S. cf. triloculinoides*, which is indicative of lower Paleocene Zone P1b. The early Paleocene age of this sample indicates a condensed horizon or hiatus is present within Core 123-766A-9R. The lowermost Paleocene nannofossil Subzone CP1a (*Cruciplacolithus primus*) was found in Samples 123-766A-10R-1, 68 cm, and 123-766A-10R-1, 100 cm. This subzone can be recognized by the presence of *C. primus*, *C. edwardsii*, *Biantholithus sparsus*, and the absence of *Cruciplacolithus tenuis*. Reworking of Cretaceous plankton increases down Section 123-766A-10R-1. The lowest definitive Paleocene assemblage was found in Sample 123-766A-10R-2, 68–69 cm (Moran, this volume).

Upper Cretaceous

The chronostratigraphy of Upper Cretaceous sediments in Hole 766A is based on calcareous nannofossils and planktonic

Table 3. Occurrences of stratigraphically important species.

	Datum/zone	Interval (cm)	Age (Ma)	Chronostratigraphy	Reference	Depth (mbsf)
F	LO <i>Globorotalia tosaensis</i>	1R-CC	0.6	Pleistocene	Berggren et al., 1985	7.7
F	FO <i>Globorotalia truncatulinoides</i>	1R-CC to 2R-CC	1.9	late Pliocene	Berggren et al., 1985	7.7
N	FO <i>Gyphrocapsa oceanica</i>	1R-CC to 2R-CC	1.68	latest Pliocene	Berggren et al., 1985	7.7
F	LO <i>Globigerina nepenthes</i>	1R-CC to 2R-CC	3.9	early Pliocene	Berggren et al., 1985	17.3
N	LO <i>Amaurolithus delicatus</i>	1R-CC to 2R-CC	3.7	early Pliocene	Berggren et al., 1985	17.3
N	FO <i>Discoaster asymmetricus</i>	2R-CC to 3R-CC	4.1	early Pliocene	Berggren et al., 1985	17.3
F	FO <i>Globorotalia puncticulata</i>	2R-CC to 3R-CC	4.4	early Pliocene	Berggren et al., 1985	17.3
F	occ. <i>Morozovella aragonensis</i>	3R-CC	46.0–55.2	early Eocene	Berggren et al., 1985	46.0–55.2
N	FO <i>Discoaster subloboensis</i>	3R-5, 93, to 3R-6, 113	52.6	early Eocene	Berggren et al., 1985	24.2
N	FO <i>Discoaster lodoensis</i>	4R-1, 100, to 4R-1, 100	55.3	early Eocene	Berggren et al., 1985	28
F	FO <i>Morozovella formosa</i>	4R-CC to 5R-CC	56.1	early Eocene	Berggren et al., 1985	36.7
N	FO <i>Ericsonia robusta</i>	5R-5, 44, to 5R-6, 44	58.6	late Paleocene	Berggren et al., 1985	43.1
N	LO <i>Fasciculithus</i>	6R-CC to 7R-1, 100	57.6	late Paleocene	Berggren et al., 1985	57
N	FO <i>Discoaster diastypus</i>	6R-5, 100, to 6R-6, 114	56.5	early Eocene	Berggren et al., 1985	53.3
N	FO <i>Discoaster mohleri</i>	8R-CC to 9R-1, 109	60.4	late Paleocene	Berggren et al., 1985	75.3
N	FO <i>Chiasmolithus danicus</i>	9R-5, 109, to 9R-CC	64.8	early Paleocene	Berggren et al., 1985	82.3
N	FO <i>Cruciplacolithus tenuis</i>	9R-CC to 10R-1, 68	65.9	early Paleocene	Berggren et al., 1985	85
N	FO <i>Micula prinsii</i>	10R-2, 100, to 10R-2, 130	68.5	late Maestrichtian	Perch-Nielsen, 1985	87.5
N	FO <i>Micula murus</i>	10R-3, 50, to 10R-CC	70	Maestrichtian	Perch-Nielsen, 1985	88.5
N	LO <i>Reinhardtites levis</i>	10R-3, 50, to 10R-CC	71	Maestrichtian	Sissingh, 1977	94.7
N	LO <i>Broinsonia parca constricta</i>	10R-3, 50, to 10R-CC	71	Maestrichtian	Perch-Nielsen, 1985	94.7
F	FO <i>Globotruncanella havanensis</i>	11R-CC to 12R-CC	74	Maestrichtian	Perch-Nielsen, 1985	104.3
N	FO <i>Reinhardtites levis</i>	12R-CC to 13R-1, 75	76.5	Campanian	Perch-Nielsen, 1985	113.9
F	FO <i>Globotruncana ventricosa</i>	12R-CC to 13R-CC	81	Campanian	Caron, 1985	123.6
N	LO <i>Marthasterites furcatus</i>	13R-1, 75, to 13R-2, 114	82	early Campanian	Sissingh, 1977	116.5
N	LO <i>Broinsonia parca constricta</i>	13R-1, 75, to 13R-2, 114	83	early Campanian	Perch-Nielsen, 1985	114.6
N	LO <i>Lithastrinus septenarius</i>	13R-2, 114, to 13R-3, 70	85.5	Santonian	Perch-Nielsen, 1985	117.6
F	LO <i>Dicarinella imbricata/hagni</i>	13R-CC to 14R-CC	86.5	Coniacian	Caron, 1985	133.2
N	FO <i>Micula decussata</i>	14R-1, 14, to 14R-1, 48	87.5	Coniacian	Sissingh, 1977	123.7
N	FO <i>Lithastrinus septenarius</i>	14R-1, 48, to 14R-2	89	late Turonian	Perch-Nielsen, 1985	124
N	FO <i>Marthasterites furcatus</i>	14R-3, 35, to 14R-4	89	late Turonian	Sissingh, 1977	126.9
F	occ. <i>Rotalipora cushmani</i> Zone	14R-CC	91–93	late Cenomanian	Caron, 1985	
N	FO <i>Quadrum gartneri</i>	15R-1, 100, to 15R-1, 100	91	late Cenomanian	Perch-Nielsen, 1985	134.2
N	LO <i>Corollithon kennedyi</i>	15R-1, 100, to 15R-1, 100	91	late Cenomanian	Perch-Nielsen, 1985	134.2
N	FO <i>C. kennedyi</i>	16R-CC to 17R-CC	96	early Cenomanian	Perch-Nielsen, 1985	152.5
N	FO <i>Eiffellithus turrisseiffelii</i>	16R-CC to 17R-CC	100	late Albian	Sissingh, 1977	152.5
N	LO <i>Rucinolithus irregularis</i>	17R-CC to 18R-CC	102	Albian	Perch-Nielsen, 1985	171.7
N	FO <i>Praediscosphaera columnata</i>	20R-CC to 21R-CC	111	early Albian	Sissingh, 1977	191
N	FO <i>Hayesites albiensis</i>	22R-CC to 23R-CC	114.5	late Aptian	Mutterlose, this vol.	210.3
R	LO <i>Alievum helenae</i>	23R-CC to 24R-CC	120	latest Barremian	Schaaf, 1981	229.6
N	FO <i>Flabellites biforaminiis</i>	27R-1, 108, to 27R-3, 18	118	early Aptian	Mutterlose, this vol.	249.9
R	FO <i>Sethocapsa euganea</i>	24R-CC to 25R-CC	119	Barremian/Aptian	Schaaf, 1985	229.6
R	LO <i>Pseudodictyomitra lilyae</i>	24R-CC to 25R-CC	120	late Barremian	Schaaf, 1981	239.9
N	FO <i>Rhagodiscus angustus</i>	26R-1, 10, to 26R-2, 141	116	Barremian/Aptian	Thierstein, 1971	239.4
N	FO <i>Chiastozygus litterarius</i>	26R-2, 141, to 27R-1, 108	118	base Aptian (Chron M0)	Bralower, 1987	242.2
N	FO <i>Rucinolithus irregularis</i>	28R-5, 51, to 28R-6, 69	118	base Aptian (Chron M0)	Bralower, 1987	265.1
N	FO <i>Eprolithus apertus</i>	28R-6, 69, to 29R-1, 119	119	Barremian/Aptian	Mutterlose, this vol.	266.6
N	LO <i>Crucellipsis cavillieri</i>	29R-1, 119, to 29R-3, 40	129	Hauterivian/Barremian	Bralower, 1987	271.7
N	LO <i>Speetonia colligata</i>	33R-1, 95, to 33R-3, 33	130	mid-Hauterivian	Mutterlose, this vol.	310.1
P	LO <i>Muderongia testudinaria</i>	36R-1, 80, to 36R-CC	128	early Barremian	Helby et al., 1987	345.5
P	FO <i>Dingodinium cerviculum</i>	38R-CC to 40R-CC	130	Hauterivian	Helby et al., 1987	364.8
N	LO <i>Tegumentum tripes</i>	45R-5, 97, to 45R-3, 148	130	Hauterivian	Mutterlose, in press	427.2
P	FO <i>Phoberacysta burgeri</i>	48R-5, 3, to 49R-2, 138	133	Valanginian	Helby et al., 1987	457.8
R	occ. <i>Praeconocaryomma prisca</i>	49R-3, 92, to 49-4, 23	130–134	late Valanginian–early Hauterivian	Baumgartner, this vol.	130–134

foraminifers. Nannofossils display moderate to good preservation, but planktonic foraminiferal assemblages between Core 123-766A-10R and -15R have been affected by severe dissolution.

The highest assemblage with *in-situ* Cretaceous nannofossils was found in Sample 123-766A-10R-2, 100 cm. Just below this level, Sample 123-766A-10R-2, 130 cm, the association of *Nephrolithus frequens*, together with *B. sparsus*, *P. sigmoides*, *Thoracosphaera* sp., and *M. inversus* indicates the uppermost Maestrichtian Zone CC26 (*N. frequens*). Sample 123-766A-10R-3, 1 cm, was placed in Zone CC25 (*Arkhangelskiella cymbiformis*), as indicated by the presence of *Micula murus*.

The Campanian is present in the interval from Samples 123-766A-10R-CC to 123-766A-13R-2, 115 cm. The presence of the planktonic foraminifers *Globotruncanella havanensis* and *Rugo-*

globigerina milamensis in Sample 123-766A-10R-CC suggests that this level is no lower than uppermost Campanian. Core-catcher samples from Cores 123-766A-10R to -12R contain the nannofossils *Aspidolithus parvus constrictus* and *Reinhardtites levis* and belong to Zone CC22b-23a (*Quadrum trifidum* to *Tranolithus phacelosus*) of late Campanian age. Sample 123-766A-13R-2, 115 cm, contains an early Campanian assemblage characterized by *Marthasterites furcatus* and *A. parvus parvus*, indicating Zone CC18 (*A. parvus*).

The Santonian is present in Samples 123-766A-13R-3, 70 cm, and 123-766A-13R-CC. These samples contain *Lithastrinus septenarius*, *L. grilli*, *Reinhardtites anthroporus*, and *Marthasterites furcatus*, indicating Zone CC15 (*R. anthroporus*), of late Santonian age. The uppermost Santonian Zone CC16 (*L. cayeuxii*)

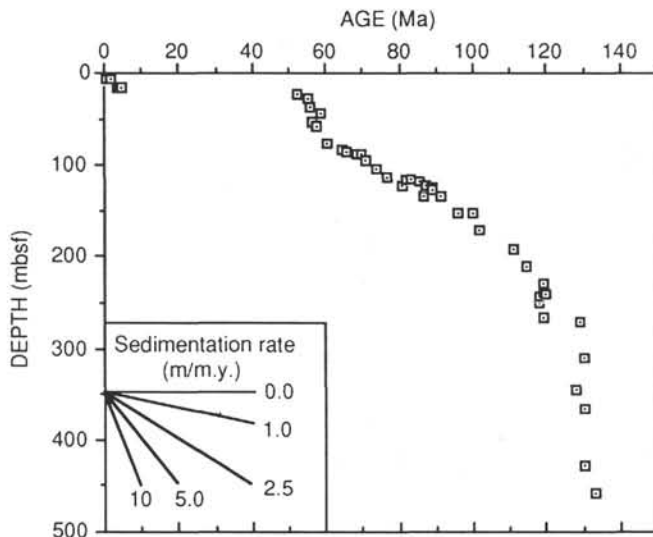


Figure 8. Age-depth curve for Hole 766A, derived from magnetobiostratigraphic data in Table 3.

and lowermost Campanian Zone CC17 (*C. obscurus*) were not observed in the samples examined. This may be due to ecological reasons or to diagenetic removal of the marker species.

The Coniacian was observed in Core 123-766A-14R. Sample 123-766A-14R-1, 15 cm, contains *M. furcatus*, *L. septenarius*, *Q. gartneri*, the LO of *Eprolithus floralis*, and the FO of *Micula decussata*. *Reinhardtites anthophorus* is lacking, which indicates Zone CC14 (*M. decussata*) of late Coniacian/early Santonian age. The absence of *M. decussata* in Sample 123-766A-14R-1, 48 cm, indicates Zone CC13 (*M. furcatus*), of Coniacian age. All samples from Sections 123-766A-14R-2 and -14R-3 contain *M. furcatus*, *Q. gartneri*, and *E. floralis* and were assigned to Zone CC13. Beginning with Core 123-766A-14R, all NRM measurements yielded stable normal polarity, which is consistent with deposition during the Cretaceous quiet zone.

The Turonian is represented in Sections 123-766A-14R-3 to -15R-1. The upper Turonian Zone CC12 (*L. maleformis*) was observed in Sample 123-766A-14R-3, 23–25 cm. Samples from Sections 123-766A-14R-4, and -14R-CC contain *Q. gartneri*, but lack *M. furcatus*, *Eiffellithus eximus*, and *Lucianorhabdus maleformis*, which indicates Zone CC11 (*Q. gartneri*). Sample 123-766A-14R-CC contains an abundant, though poorly preserved, Turonian planktonic foraminiferal assemblage that is dominated by the *Dicarinella imbricata/hagni* Group, along with *Praeglobotruncana stephani* and *P. gibba*.

The Cenomanian/Turonian boundary lies between Sample 123-766A-15R-1, 100 cm, which contains the FO of *Q. gartneri*, and Sample 123-766A-15R-3, 100 cm, which contains the LO of *Corollithion kennedyi*, marking the top of Zone CC10 (*M. decoratus*). Sample 123-766A-15R-CC contains an upper Cenomanian planktonic foraminiferal assemblage with *Rotalipora greenhornensis*, *Praeglobotruncana delrioensis*, *P. stephani*, and *Whiteinella brittonensis* and belongs to the *Rotalipora cushmani* Zone of Caron (1985).

Lower Cretaceous

The chronostratigraphy of Lower Cretaceous sediments is based upon calcareous nannofossils and planktonic foraminifers in the Albian to Cenomanian and on palynomorphs, radiolarians, benthic foraminifers, and magnetostratigraphy in the Neocomian. The placement of chronostratigraphic boundaries was constrained by the magnetostratigraphic pattern. There is apparent conflict

between nannofossil biostratigraphy, which suggests an extremely condensed or missing Barremian (Mutterlose, this volume), and radiolarians, palynomorphs, and magnetics, which suggest a relatively thick Barremian.

The Albian/Cenomanian boundary is located between Samples 123-766A-15R-CC and -16R-3, 46–50 cm. The FO of *Eiffellithus turriseiffelii* in Sample 123-766A-17R-4, 80–82 cm, characterizes the boundary between Zone CC8 (*Praediscosphaera columnata*) and the overlying Zone CC9 (*E. turriseiffelii*). The planktonic foraminiferal assemblages provide useful information for the uppermost Albian interval (Haig, this volume). Samples 123-766A-16R-3, 46–50 cm, through -16R-CC lie within the range of *Planomalina buxortfi* and belong to the undifferentiated *Pseudothalmanninella tincinensis*–*Planomalina buxortfi* and *Thalmanninella appenninica*–*Planomalina buxortfi* Zones (uppermost Albian) of Wonders (1980). The presence of advanced *R. appenninica* grading into *R. globotruncanoides* suggests that Sample 123-766A-16R-3, 46–50 cm is close to the Albian/Cenomanian boundary. Samples 123-766A-17R-2, 125–128 cm, and -17R-3, 36–39 cm correlate with the *Planomalina praebuxortfi* Subzone of Leckie (1984), of late Albian age. Below this level, correlations based on planktonic foraminifers are tentative because of the absence of commonly used zonal index species. The development of *Hedbergella* assemblages in the interval ranging from Core 123-766A-17R downward to Core 123-766A-21R, is broadly similar to those recorded in the Australian “Great Artesian Basin” by Playford et al. (1975) and Haig (1979). The upper Albian interval (down to approximately Core 123-766A-18R-3) contains abundant *Hedbergella* cf. *punctata* and *Hedbergella vezoana*. Sections 123-766A-18R-5 through -21-CC, contain abundant *Hedbergella planispira* and were assigned to the lower and middle Albian. The interval between Samples 123-766A-17R-CC and -22R-CC contains an Albian nannofossil assemblage that was assigned to Zone CC8 (*P. columnata*), based on the presence of *Chiastozygus litterarius*, *Eprolithus apertior*, *E. floralis*, *P. columnata*, *Flabellites biforaminis*, *Stoverius achylosus*, and *Hayesites irregularis*. The FO of *P. columnata* in Sample 123-766A-22R-CC marks the base of this zone. The occurrence of *Hedbergella trochoidea* together with *Favusella* sp. in Sample 123-766A-21R-CC suggests this level is near the Aptian/Albian boundary.

The Aptian/Albian boundary probably occurs within Core 123-766A-23R, which had poor recovery. The interval between Samples 123-766A-23R-1, 30 cm, to -26R-1, 10 cm, contains nannofossil assemblages with *Rhagodiscus angustus* and *Flabellites biforaminis* and belongs to the lower Aptian Zone CC7A. However, the first occurrence of abundant *Hedbergella* cf. *planispira* in Sample 123-766A-25R-1, 33–35 cm, and the presence of *Globigerinelloides aptiensis* in Sample 123-766A-25R-CC suggest a correlation with the upper Aptian (Haig, this volume). Radiolarian assemblages between Samples 123-766A-22R-CC and -24R-CC were assigned to the lower *Sethocapsa euganea* Zone of Schaaf (1985), which is of Aptian age. The LO of the radiolarian *Alievum helenae*, co-occurring with rare *Sethocapsa euganea* in Sample 123-766A-24R-CC, suggests that this level is near the Barremian/Aptian boundary.

Nannofossils of definite Barremian age were found in Sample 123-766A-28R-5, 51–52 cm. This sample contains the FO of *Hayesites irregularis*. Other species typical for the Aptian include *E. varolii* in Sample 123-766A-28R-4, 62–63 cm, and *F. biforaminis* in Sample 123-766A-27R-1, 108–109 cm. Palynomorphs belonging to the Barremian upper *Muderongia australis* Zone of Helby et al. (1987) were found in Samples 123-766A-28R-CC to 123-766A-32R-CC. The long reversed-polarity zone that extends through Cores 123-766A-28R and -29R is probably Chron M3r. Adjacent polarity Chron M1r may be the reversed-polarity zone in Core 123-766A-27R, which had poor recovery. However, there

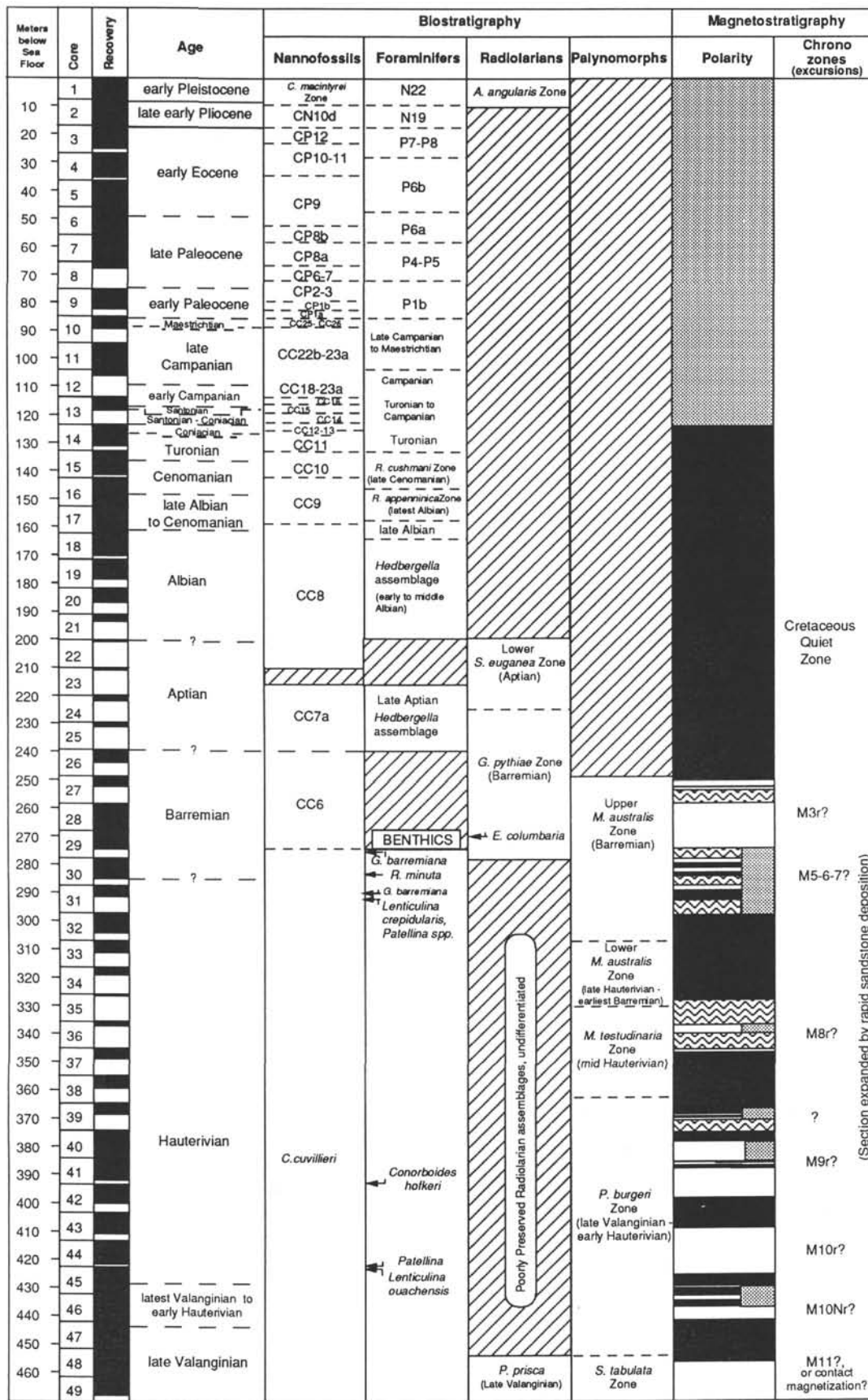


Figure 9. Magnetobiostratigraphic synthesis and chronostratigraphy of Hole 766A.

is no indication of reversed-polarity Zone M0r at the top of the claystone unit in Core 123-766A-26R or in the overlying Aptian white limestone. The facies change probably corresponds to a hiatus that incorporates the uppermost Barremian to lowermost Aptian.

The Hauterivian/Barremian boundary is located within the interval between Core 123-766A-29R and -33R, based on somewhat conflicting paleontologic data. The LO of the nanofossil *Crucellipsis cuvillieri* was observed in Sample 123-766A-29R-3, 40–41 cm. If not reworked, the Hauterivian/Barremian boundary may be as high as Core 123-766A-29R. However, palynomorph assemblages provide evidence for the placement of the Hauterivian/Barremian boundary below Core 123-766A-32R. The boundary between the Barremian upper *M. australis* Zone and the upper Hauterivian to lowest Barremian lower *Muderongia australis* Zone of Helby et al. (1987) was found within Core 123-766A-33R. The LO of the benthic foraminifers *Marginulopsis collignoni* was observed in Sample 123-766A-32R-CC, and the LO of *Tristix acutiangulata* in Sample 123-766A-33R-CC. Both species display LOs near the Hauterivian/Barremian boundary at Site 416 in the North Atlantic. Nanofossil assemblages in the interval between Samples 123-766A-33R-CC and -44R-CC are well preserved and contain *Crucibiscutum salebrosum* and *Micrantholithus hoschulzii*, in addition to *C. cuvillieri*, which indicates a Hauterivian age. Palynomorph assemblages can be used to subdivide the Hauterivian into upper, middle, and lower intervals. Core-catcher samples from Cores 123-766A-33R to -35R include the species *Cribroperidinium* sp., *Circulodinium deflandrei*, *Leptodinium* spp., *Circulodinium deflandrei*, and *Leptodinium* spp. and were assigned to the lower *Muderongia australis* Zone. Samples 123-766A-36R-1, 79–80 cm; 123-766A-36R-CC; and 123-766A-37R-2, 5–7 cm, contain assemblages of the middle Hauterivian *Muderongia testudinaria* Zone. Core-catcher samples from Cores 123-766A-40R to -47R contain assemblages equivalent to the *Phoberacysta burgeri* Zone, of late Valanginian to early Hauterivian age.

The Valanginian/Hauterivian boundary is probably located within Core 123-766A-45R or -46R. This interval contains a relatively rich nanofossil assemblage characterized by *Tegumentum* spp. A similar *Tegumentum* assemblage, with common *S. salebrosum*, has been described from the uppermost Valanginian to lower Hauterivian of northwest Germany. Mutterlose (this volume) places the Valanginian/Hauterivian boundary within Core 123-766A-45R, based on the LO of *Tegumentum striatum*. The magnetic polarity-reversal pattern at the base of Hole 766A is nearly identical to polarity Chrons M10r to M10Nr, including the two brief reversed-polarity intervals during normal-polarity Chron M10Nn. Reversed-polarity Chron M10Nr, observed in Core 766A-46R, is located at the Valanginian/Hauterivian boundary as recognized in the North Atlantic (Ogg and Steiner, 1988). Palynomorph assemblages belonging to the upper Valanginian *Senoniasphaera tabulata* Zone were observed in Samples 123-766A-48R-5, 0–3 cm, and -49R-2, 138–140 cm. Two samples from Core 123-766A-49R, from sediment layers between basalt sills, yield a moderately preserved radiolarian assemblage that includes *Eucyrtis micropora*, *Praeconocaryomma prisca*, *Praeconocaryomma* spp., and *Parvicingula* spp. These assemblages are similar to those recovered at Site 765 in Cores 123-765C-57R to -59R and have been dated as late Valanginian, based on the presence of *P. prisca*. The lowermost nanofossil assemblage, in Sample 123-766A-50R-1, 5 cm, contains *W. barnesae*, *C. cuvillieri*, *C. salebrosum*, *T. tripes*, and *Tegumentum striatum*. The presence of *T. tripes* and *T. striatum* indicates a late Valanginian age.

ACKNOWLEDGMENTS

The Leg 123 paleontologists are grateful to the Ocean Drilling Program for the opportunity to participate in Leg 123 and to the

captain, crew, and technical staff of the *JOIDES Resolution* for providing samples and logistic support. M.A.K. gratefully acknowledges travel support from an NSERC Strategic Grant to Ron Boyd (Dalhousie University). P.O.B. thanks the Swiss National Science Foundation for travel support and research funds. Joseph E. Hazel and Scott W. Snyder reviewed an early draft of this manuscript and provided many useful suggestions.

REFERENCES

- Aita, Y., 1987. Middle Jurassic to Lower Cretaceous radiolarian biostratigraphy of Shikoku with reference to selected sections in Lombardy Basin and Sicily. *Geology*, 58:91–115.
- Aphorpe, M. C., 1988. Cainozoic depositional history of the Northwest Shelf. In Purcell, P. G., and Purcell, R. R. (Eds.), *The Northwest Shelf, Australia*. Proc. Pet. Expl. Soc. Aust. Symp., 55–84.
- Aubry, M.-P., Berggren, W. A., Kent, D. V., Flynn, J. J., Klitgord, K. D., Obradovich, J. D., and Prothero, D. R., 1988. Paleogene geochronology: an integrated approach. *Paleoceanography*, 3:707–742.
- Audley-Charles, M. G., Ballantyne, P. D., and Hall, R., 1988. Mesozoic-Cenozoic rift-drift sequence of Asian fragments from Gondwanaland. *Tectonophysics*, 155:317–330.
- Banner, F. T., and Blow, W. H., 1965. Progress in the planktonic foraminiferal biostratigraphy of the Neocene. *Nature*, 209:1164–1166.
- Bartenstein, H., 1974. Upper Jurassic-Lower Cretaceous primitive arenaceous foraminifers from DSDP Sites 259, and 261, eastern Indian Ocean. In Veevers, J. J., Heitzler, J. R., et al., *Init. Repts. DSDP*, 27: Washington (U.S. Govt. Printing Office), 683–695.
- Bartenstein, H., and Brand, E., 1951. Mikropalaontologische Untersuchungen zur Stratigraphie des nordwestdeutschen Valendis. *Abh. Senckenb. Naturforsch. Ges.*, 485:239–336.
- Baumgartner, P. O., 1984. A Middle Jurassic-Early Cretaceous low-latitude radiolarian zonation based on unitary associations and age of Tethyan radiolarites. *Eclogae Geol. Helv.*, 77:729–837.
- _____, 1987. Age and genesis of Tethyan Jurassic radiolarites. *Eclogae Geol. Helv.*, 80:831–879.
- Belford, D. J., 1981. Late Cretaceous planktonic foraminifera in Valdivia core KL1 from the Scott Plateau and Rowley Terrace, off northwestern Australia. *Bull. Bur. Miner. Resour., Geol. Geophys. (Aust.)*, 213:48–67.
- Berggren, W. A., 1969. Cenozoic chronostratigraphy, planktonic foraminiferal zonation, and the radiometric time scale. *Nature*, 224:1072–1075.
- Berggren, W. A., and Kaminski, M. A., 1990. Abyssal agglutinates: back to basics. In Hemleben, C., Kaminski, M. A., Kuhnt, W., and Scott, D. B. (Eds.), *Paleoecology, Biostratigraphy, Paleoclimatology and Taxonomy of Agglutinated Foraminifera*. NATO ASI Ser., Ser. C, 327:53–75.
- Berggren, W. A., Kent, D. V., and Flynn, J. J., 1985a. Jurassic to Paleogene: Part 2. Paleogene geochronology and chronostratigraphy. In Snelling, N. J. (Ed.), *The Chronology of the Geological Record*. Geol. Soc. London Mem., 10:141–195.
- Berggren, W. A., Kent, D. V., and Van Couvering, J. A., 1985b. The Neogene: Part 2. Neogene geochronology and chronostratigraphy. In Snelling, N. J. (Ed.), *The Chronology of the Geological Record*. Geol. Soc. London Mem., 10:211–260.
- Blow, W. H., 1969. Late middle Eocene to Recent planktonic foraminiferal biostratigraphy. In Brönniman, P., and Renz, H. H. (Eds.), *Proc. First Int. Conf. Planktonic Microfossils*, Geneva, 1967. Leiden (E. J. Brill), 1:199–422.
- _____, 1979. *The Cainozoic Globigerinida*: Leiden (E. J. Brill).
- Bown, P. R., Cooper, M.K.E., and Lord, A. R., 1988. A calcareous nanofossil biozonation scheme for the early to mid Mesozoic. *Newsl. Stratigr.*, 20:91–114.
- Bralower, T. J., 1987. Valanginian to Aptian calcareous nanofossil stratigraphy and correlation with the upper M-sequence magnetic anomalies. *Mar. Micropaleontol.*, 11:293–310.
- Bukry, D., 1981. Pacific coast coccolith stratigraphy between Point Conception and Cabo Corientes, Deep Sea Drilling Project, Leg 63. In Yeats, R. S., Haq, B. U., et al., *Init. Repts. DSDP*, 63: Washington (U.S. Govt. Printing Office), 445–471.
- Caron, M., 1985. Cretaceous planktic foraminifera. In Bolli, H. M., Saunders, J. B., and Perch-Nielsen, K. (Eds.), *Plankton Stratigraphy*: Cambridge (Cambridge Univ. Press), 17–86.

- Casey, R. E., and Reynolds, R. A., 1980. Late Neogene radiolarian biostratigraphy and paleoceanography with suggested cosmopolitan radiolarian datums. *Spec. Publ. Cushman Found. Foraminiferal Res.*, 19:287–300.
- Channell, J.E.T., Lowrie, W., and Midizza, R., 1979. Middle and Early Cretaceous magnetic stratigraphy from the Cison section, Northern Italy. *Earth Planet. Sci. Lett.*, 42:153–166.
- Chaproniere, G.C.H., 1981. Late Oligocene to early Miocene planktonic foraminifers from Ashmore Reef No. 1 well, northwest Australia. *Alcheringa*, 5:103–131.
- Cooper, M.K.E., 1984. Nannofossils across the Jurassic/Cretaceous boundary in the Tethyan Realm. *Int. Symp. Jurassic Stratigr.*, 2:429–443.
- Dailey, D. H., 1983. Late Cretaceous and Paleocene benthic foraminifers from Deep Sea Drilling Project Site 516, Rio Grande Rise, western South Atlantic Ocean. In Barker, P. F., Carlson, R. L., et al., *Init. Repts. DSDP*, 72: Washington (U.S. Govt. Printing Office), 757–782.
- Fullerton, L. G., Sager, W. W., and Handschumacher, D. W., 1989. Late Jurassic-Early Cretaceous evolution of the eastern Indian Ocean adjacent to Northwest Australia. *J. Geophys. Res.*, 94:2937–2953.
- Gartner, S., 1977. Calcareous nannofossil biostratigraphy and revised zonation of the Pleistocene. *Mar. Micropaleontol.*, 2:1–25.
- Geroch, S., and Nowak, W., 1984. Proposal of zonation for the late Tithonian-Late Eocene, based upon arenaceous foraminifera from the Outer Carpathians, Poland. In Oertli, H. J. (Ed.), *Benthos '83: 2nd Int. Symp. on Benthic Foraminifera (Pau, April 1983)*, 225–239.
- Gradstein, F. M., 1978. Biostratigraphy of Lower Cretaceous Blake Nose and Blake Bahama Basin foraminifera, DSDP Leg 44, western North Atlantic Ocean. In Benson, W. E., Sheridan, R. E., et al., *Init. Repts. DSDP*, 44: Washington (U.S. Govt. Printing Office), 663–702.
- _____, 1983. Paleocology and stratigraphy of Jurassic abyssal foraminifera in the Blake-Bahama Basin, Deep Sea Drilling Project Leg 76, Sites 533 and 534. In Sheridan, R. E., Gradstein, F. M., et al., *Init. Repts. DSDP*, 76: Washington (U.S. Govt. Printing Office), 537–560.
- _____, 1986. Northwestern Atlantic Mesozoic biostratigraphy. In Vogt, P. R., et al. (Eds.), *The Geology of North America (Vol. M): The Western North Atlantic Region*. Geol. Soc. Am., 507–525.
- Haig, D. W., 1979. Cretaceous foraminiferal biostratigraphy of Queensland. *Alcheringa*, 3:171–187.
- _____, 1981. Mid-Cretaceous foraminiferids from the Wahgi Valley, Central Highlands of Papua New Guinea. *Micropaleontology*, 27:337–351.
- Hansen, J. M., 1977. Dinoflagellate stratigraphy and echinoid distribution in Upper Maastrichtian and Danian deposits from Denmark. *Bull. Geol. Soc. Den.*, 26:1–26.
- Haq, B. U., Hardenbol, J., and Vail, P. R., 1987. Chronology of fluctuating sea levels since the Triassic. *Science*, 235:1156–1167.
- Helby, R., Morgan, R., and Partridge, A. D., 1987. A palynological zonation of the Australian Mesozoic. In Jell, P. A. (Ed.), *Studies in Australian Mesozoic Palynology*. Mem. Assoc. Australas. Palaeontol., 4:1–94.
- Hemleben, C., and Troester, J., 1984. Campanian-Maastrichtian deep-water foraminifers from Hole 534A, Deep Sea Drilling Project. In Biju-Duval, B., Moore, J. C., et al., *Init. Repts. DSDP*, 78A: Washington (U.S. Govt. Printing Office), 509–532.
- Herb, R., and Scheibnerova, V., 1977. Synopsis of Cretaceous planktonic foraminifera from the Indian Ocean. In Heirtzler, J. R., Bolli, H. M., et al. (Eds.), *Indian Ocean Geology and Biostratigraphy*. Am. Geophys. Union, 399–415.
- Kennett, J. P., and Srinivasan, M. S., 1983. *Neogene Planktonic Foraminifera: A Phylogenetic Atlas*. Stroudsburg, PA (Hutchinson Ross).
- Kent, D. V., and Gradstein, F. M., 1986. A Jurassic to Recent chronology. In Vogt, P. R., and Tucholke, B. E. (Eds.), *The Geology of North America (Vol. M): The Western North Atlantic Region*. Geol. Soc. Am., 45–50.
- Krasheninnikov, V. A., 1974. Upper Cretaceous benthonic agglutinated foraminifera, Leg 27 of the Deep Sea Drilling Project. In Veevers, J. J., Heirtzler, J. R., et al., *Init. Repts. DSDP*, 27: Washington (U.S. Govt. Printing Office), 631–661.
- Kuhnt, W., and Kaminski, M., 1989. Upper Cretaceous deep-water agglutinated benthic foraminiferal assemblages from the Western Mediterranean and adjacent areas. In Wiedmann, J. (Ed.), *Cretaceous of the Western Tethys*. Proc. 3rd Inter. Cretaceous Symp., Tübingen.
- Kuznetsova, K. I., 1974. Distribution of benthonic foraminifera in Upper Jurassic and Lower Cretaceous deposits at Site 261, DSDP Leg 27, in the eastern Indian Ocean. In Veevers, J. J., Heirtzler, J. R., et al., *Init. Repts. DSDP*, 27: Washington (U.S. Govt. Printing Office), 673–681.
- Kuznetsova, K. I., and Seibold, I., 1978. Foraminifers from the Upper Jurassic and Lower Cretaceous of the Eastern Atlantic (DSDP Leg 41, Sites 367 and 370). In Lancelot, Y., Seibold, E., et al., *Init. Repts. DSDP*, 41: Washington (U.S. Govt. Printing Office), 515–538.
- Leckie, R. M., 1984. Mid-Cretaceous planktonic foraminiferal biostratigraphy off Central Morocco, Deep Sea Drilling Project Leg 79, Sites 545 and 547. In Hinz, K., Winterer, E. L., et al., *Init. Repts. DSDP*, 79: Washington (U.S. Govt. Printing Office), 579–620.
- Luterbacher, H., 1972. Foraminifera from the Lower Cretaceous and Upper Jurassic of the northwestern Atlantic. In Hollister, C. D., Ewing, J. I., et al., *Init. Repts. DSDP*, 11: Washington (U.S. Govt. Printing Office), 561–594.
- Martini, E., 1971. Standard Tertiary and Quaternary calcareous nannoplankton zonation. In Farinacci, A. (Ed.), *Proc. 2nd Planktonic Conf. Roma*: Rome (Ed. Technosci.), 2:739–785.
- Maync, W., 1973. Lower Cretaceous foraminiferal fauna from Gorringer Bank, eastern North Atlantic. In Ryan, W.B.F., Hsü, K. J., et al., *Init. Repts. DSDP*, 13: Washington (U.S. Govt. Printing Office), 1075–1111.
- McGowran, B., 1977. Maastrichtian to Eocene foraminiferal assemblages in the northern and eastern Indian Ocean region: correlations and historical patterns. In Heirtzler, J. R., Bolli, H. M., Davies, T. A., Saunders, J. B., and Sclater, J. C. (Eds.), *Indian Ocean Geology and Biostratigraphy*: Washington (Am. Geophys. Union), 417–458.
- McMinn, A., 1988a. The Cretaceous-Tertiary boundary in the Bonaparte Basin, northwest Australia. *Proc. 7th Int. Palynol. Congr.*, Brisbane. (Abstract)
- _____, 1988b. Outline of a Late Cretaceous dinoflagellate zonation of northwestern Australia. *Alcheringa*, 12:137–156.
- Moullade, M., 1984. Intérêt des petits foraminifères benthiques "profonds" pour la biostratigraphie et l'analyse des paléoenvironnements océaniques Mésozoïques. In Oertli, H. J. (Ed.), *Proc. 2nd Int. Symp. Benthic Foraminifera (Pau, April 1983)*, 429–464.
- Moullade, M., Kuhnt, W., and Thurow, J., 1988. Agglutinated benthic foraminifers from Upper Cretaceous variegated clays of the North Atlantic Ocean (DSDP Leg 93 and ODP Leg 103). In Boillot, G., Winterer, E. L., et al., *Proc. ODP, Sci. Results*, 103: College Station, TX (Ocean Drilling Program), 349–377.
- Mutterlose, J., in press. Das Verteilungs- und Migrationsmuster des kalkigen Nannoplanktons in der borealen Unterkreide (Valangin.-Apt.) NW-Deutschlands. *Palaeontographica B*.
- Ogg, J. G., 1984. Comment on "Magnetostratigraphy of the Jurassic-Cretaceous boundary in the Maiolica limestone (Umbria Italy)." *Geology*, 12:701–702.
- Ogg, J. G., and Lowrie, W., 1986. Magnetostratigraphy of the Jurassic/Cretaceous boundary. *Geology*, 14:547–550.
- Ogg, J. G., and Steiner, M. B., 1988. Late Jurassic and Early Cretaceous magnetic polarity time scale. In Rocha, R. (Ed.), *2nd Int. Symp. Jurassic Stratigr.*, Lisbon, Sept. 1987: 1125–1138.
- Okada, H., and Bukry, D., 1980. Supplementary modification and introduction of code numbers to the low-latitude coccolith biostratigraphic zonation (Bukry, 1973; 1975). *Mar. Micropaleontol.*, 5:321–325.
- Perch-Nielsen, K., 1985. Cenozoic calcareous nannofossils. In Bolli, H. M., Saunders, J. B., and Perch-Nielsen, K. (Eds.), *Plankton Stratigraphy*: Cambridge (Cambridge Univ. Press), 427–554.
- Pessagno, E. A., 1977. Lower Cretaceous radiolarian biostratigraphy of the Great Valley sequence and Franciscan complex, California coast ranges. *Spec. Publ. Cushman Found. Foraminiferal Res.*, 15:1–87.
- Proto Decima, F., 1974. Leg 27 calcareous nannoplankton. In Veevers, J. J., Heirtzler, J. R., et al., *Init. Repts. DSDP*, 27: Washington (U.S. Govt. Printing Office), 589–621.
- Riedel, W. R., and Sanfilippo, A., 1978. Stratigraphy and evolution of tropical Cenozoic radiolarians. *Micropaleontology*, 23:61–96.
- Riegraf, W., and Luterbacher, H., 1989. Benthonische Foraminiferen aus der Unterkreide des "Deep Sea Drilling Project" (Leg 1–79). *Geol. Rundsch.*, 78:1063–1120.
- Rodi, P. H., 1978. Cretaceous nannoplankton biostratigraphy and oceanography of the northwestern Atlantic Ocean. In Benson, W. E., Sheridan, R. E., et al., *Init. Repts. DSDP*, 44: Washington (U.S. Govt. Printing Office), 731–759.

- Rodi, P. H., Medd, A. W., and Watkins, D. K., 1983. Jurassic calcareous nannofossil zonation, an overview with new evidence from Deep Sea Drilling Project Site 534. In Sheridan, R. E., Gradstein, F. M., et al., *Init. Repts. DSDP*, 76: Washington (U.S. Govt. Printing Office), 573-579.
- Ruddiman, W., Sarnthein, M., Baldauf, J., et al., 1988. *Proc. ODP, Init. Repts.*, 108: College Station, TX (Ocean Drilling Program).
- Sanfilippo, A., and Riedel, W. R., 1985. Cretaceous radiolaria. In Bolli, H. M., Saunders, J. B., and Perch-Nielsen, K. (Eds.), *Plankton Stratigraphy*: Cambridge (Cambridge Univ. Press), 573-630.
- Sanfilippo, A., Westberg-Smith, M. J., and Riedel, W. R., 1985. Cenozoic radiolaria. In Bolli, H. M., Saunders, J. B., and Perch-Nielsen, K. (Eds.), *Plankton Stratigraphy*: Cambridge (Cambridge Univ. Press), 631-712.
- Schaaf, A., 1981. Late Cretaceous radiolarians from Deep Sea Drilling Project Leg 62. In Thiede, J., Vallier, T. L., et al., *Init. Repts. DSDP*, 62: Washington (U.S. Govt. Printing Office), 419-470.
- _____, 1985. Un nouveau canevas biochronologique du Crétacé Inférieur et moyen: les biozones radiolaires. *Sci. Geol. Bull.*, 38:227-269.
- Shipboard Scientific Party, 1990. Explanatory notes. In Haq, B. U., von Rad, U., et al., *Proc. ODP, Init. Repts.*, 122: College Station, TX (Ocean Drilling Program), 17-38.
- _____, 1990. Site 765. In Ludden, J. N., Gradstein, F. M., et al., *Proc. ODP, Init. Repts.*, 123: College Station, TX (Ocean Drilling Program), 63-267.
- Sissingh, W., 1977. Biostratigraphy of Cretaceous calcareous nannoplankton. *Geol. Mijnbouw*, 56:37-65.
- Sliter, W. V., 1980. Mesozoic foraminifers and deep-sea benthic environments from Deep Sea Drilling Project Sites 415 and 416, eastern north Atlantic. In Lancelot, Y., Winterer, E. L., et al., *Init. Repts. DSDP*, 50: Washington (U.S. Govt. Printing Office), 353-428.
- Stam, B., 1986. Quantitative analysis of Middle and Late Jurassic foraminifera from Portugal and its implications for the Grand Banks of Newfoundland. *Utrecht Micropaleontol. Bull.*, 34:1-167.
- Thierstein, H. R., 1971. Tentative Lower Cretaceous nannoplankton zonation. *Eclogae Geol. Helv.*, 64:458-488.
- _____, 1976. Mesozoic calcareous nannoplankton biostratigraphy of marine sediments. *Mar. Micropaleontol.*, 1:325-362.
- Tjalsma, R. C., and Lohmann, G. P., 1983. Paleocene-Eocene bathyal and abyssal benthic foraminifera from the Atlantic Ocean. *Micropaleontol. Spec. Publ.*, 4:1-90.
- Vandenberg, J., and Wonders, A.A.H., 1980. Paleomagnetism of Late Mesozoic pelagic limestones from the Southern Alps. *J. Geophys. Res.*, 85:3623-3627.
- van Morkhoven, F.P.C.M., Berggren, W. A., and Edwards, A. S., et al., 1986. Cenozoic cosmopolitan deep-water benthic foraminifera. *Bull. Cent. Rech. Explor.-Prod. Elf-Aquitaine*, Mem. 11.
- Vincent, E., 1977. Indian Ocean Neogene planktonic foraminiferal biostratigraphy and its paleoceanographic implications. In Heirtzler, J. R., Bolli, H. M., Davies, T. A., Saunders, J. B., and Sclater, J. G. (Eds.), *Indian Ocean Geology and Biostratigraphy*. Am. Geophys. Union, 469-584.
- von Rad, U., Thurov, J., Haq, B. U., Gradstein, F., Ludden, J., and ODP Leg 122/123 Shipboard Scientific Parties, 1989. Triassic to Cenozoic evolution of the NW Australian continental margin and the birth of the Indian Ocean (preliminary results of ODP Legs 122 and 123). *Geol. Rundsch.*, 78:1189-1210.
- Williams, G. L., 1977. Dinocysts: their palaeontology, biostratigraphy and palaeoecology. In Ramsey, A.T.S. (Ed.), *Oceanic Micropalaeontology*: London (Academic Press), 1231-1325.
- Wright, C. A., and Apthorpe, M., 1977. Planktonic foraminiferids from the Maastrichtian of the Northwest Shelf, Western Australia. *J. Foraminiferal Res.*, 7:668-641.
- Zijderveld, J.D.A., Zachariass, J. W., Verhallen, P.J.J.M., and Hilgen, F. J., 1986. The age of the Miocene-Pliocene boundary. *Newsl. Stratigr.*, 16:169-181.

Date of initial receipt: 10 September 1990

Date of acceptance: 13 February 1991

Ms 123B-115