



Microbiota Differences of the Comb Jelly *Mnemiopsis leidyi* in Native and Invasive Sub-Populations

Cornelia Jaspers^{1*}, Nancy Weiland-Bräuer^{2*}, Martin A. Fischer², Sven Künzel³, Ruth A. Schmitz² and Thorsten B. H. Reusch¹

¹ GEOMAR Helmholtz Centre for Ocean Research Kiel, Marine Evolutionary Ecology, Kiel, Germany, ² Institute for General Microbiology, Christian-Albrechts-Universität zu Kiel, Kiel, Germany, ³ Max Planck Institute for Evolutionary Biology, Plön, Germany

OPEN ACCESS

Edited by:

Sandie M. Degnan,
The University of Queensland,
Australia

Reviewed by:

Adam Michael Reitzel,
The University of North Carolina
at Charlotte, United States
Cynthia B. Silveira,
San Diego State University,
United States

*Correspondence:

Cornelia Jaspers
cjaspers@geomar.de;
coja@aqua.dtu.dk
Nancy Weiland-Bräuer
nweiland@ifam.uni-kiel.de

† These authors have contributed
equally to this work

Specialty section:

This article was submitted to
Marine Molecular Biology
and Ecology,
a section of the journal
Frontiers in Marine Science

Received: 03 June 2019

Accepted: 27 September 2019

Published: 11 October 2019

Citation:

Jaspers C, Weiland-Bräuer N,
Fischer MA, Künzel S, Schmitz RA
and Reusch TBH (2019) Microbiota
Differences of the Comb Jelly
Mnemiopsis leidyi in Native
and Invasive Sub-Populations.
Front. Mar. Sci. 6:635.
doi: 10.3389/fmars.2019.00635

The translocation of non-indigenous species around the world, especially in marine systems, is a matter of concern for biodiversity conservation and ecosystem functioning. While specific physical and ecological traits are often recognized to influence the success in the establishment of non-indigenous species, the impact of the associated microbiota for the fitness and performance of basal marine metazoans remains vastly unknown. However, for the elucidation of the microbial impact on host fitness, first the diversity of the associated microbiota has to be characterized. In this study, we compared bacterial composition patterns of the invasive ctenophore *Mnemiopsis leidyi* in different native and invasive sub-populations along with the genetic structure of the host (polymorphic microsatellite markers). Amplicon sequencing of the 16S rRNA gene (V1-V2 hypervariable regions) revealed that *M. leidyi* as representative of the phylum Ctenophora, the sister group to all metazoans, harbored a distinct microbiota compared to the ambient seawater, which significantly differed across two major tissues, namely epidermis and gastrodermis. Moreover, we identified significant differences in bacterial community compositions between native and invasive sub-populations of *M. leidyi*. This might indicate, that the microbiota can be influenced by the genotypic background of the host. To detangle such interactions, laboratory controlled experiments in a common garden set up are needed.

Keywords: ctenophore, metaorganism, bacteria, species translocations, invasive species

INTRODUCTION

All multicellular organisms are intimately associated with microbes and thus jointly constitute metaorganisms, a fact that is attaining large public and scientific attention. For model organisms it has been shown that the microbiota contributes to host fitness and can be essential for host functioning (Bosch and McFall-Ngai, 2011; Rook et al., 2017; Jaspers et al., 2019a). Ctenophores, being a basal metazoan phylum (Dunn et al., 2008; Whelan et al., 2017), have so far not been considered in the metaorganism context (Bosch and McFall-Ngai, 2011). However, it is expected that a more detailed understanding on host-microbe interactions at the base of the metazoan tree can reveal important information about metaorganism evolution. For example, in other marine basal metazoans such as corals and jellyfish, bacteria and their exudates have a crucial impact on

life history decision such as metamorphosis and settlement induction to the benthos (Neumann, 1979; Tebben et al., 2011). Additionally, bacterial exudates have been documented to trigger sexual reproduction in choanoflagellates (Woznica et al., 2017) as well as the evolution of multicellularity (Alegado et al., 2012).

The ctenophore *Mnemiopsis leidyi* is not only a basal metazoan species, but is becoming an ecological model organism for biological invasions (Jaspers et al., 2018) with large and widespread impacts on invaded ecosystems (e.g., Kideys, 2002; Tiselius and Møller, 2017). For western Eurasia, two distinct invasion events can be differentiated with a first introduction into the Black Sea with subsequently spreading throughout adjacent waters including the Mediterranean Sea, and a more recent introduction into north-western Europe (Reusch et al., 2010; Jaspers et al., 2018). Both introductions can be traced to different sub-population origins in the native habitat with the north European invasion originating from the north-east coast of the United States, while the southern invasion can be traced back to the Gulf of Mexico and south-east coast of the United States (Bolte et al., 2013; Bayha et al., 2015). Some earlier studies already characterized the associated microbiome of *M. leidyi* in invaded (Hao et al., 2015) and native (Daniels and Breitbart, 2012) sub-populations, but came to inconclusive results. Moreover, the study by Hammann et al. (2015) even claimed that *M. leidyi* epithelia in invaded habitats do not contain an associated microbiome (Hammann et al., 2015), which was, however, not confirmed by others (Dinasquet et al., 2012). Thus, the objectives of this study are to investigate (1) the effect of *M. leidyi* sub-population origin on the microbiota diversity, (2) the bacterial community differentiation between specific *M. leidyi* tissue compartments and (3) assess differences in the microbiome of native versus invasive sub-populations by using standardized sampling and sequencing methods.

MATERIALS AND METHODS

Sampling of *Mnemiopsis leidyi*

Specimen of *M. leidyi* (8 to 17 individuals) were sampled during summer 2012 (approximately during temperature peak) in northern and southern areas of its native as well as invasive distribution range (see Jaspers et al., 2019b). In more detail, samples from native habitats originated from Mosquito Lagoon, Florida (17 ctenophores, 11 water samples), Atlantic Coast of south-east United States; Woods Hole (Cape Cod), Massachusetts, Atlantic Coast of north-east United States (10 ctenophores, nine water samples); whereas invasive *M. leidyi* were sampled in Marseille, France, north-west Mediterranean Sea (10 ctenophores, six water samples); and Helgoland, Germany, German Bight/North Sea (eight ctenophores, five water samples). Animals were caught by use of a dip net and animals were individually kept in sterile filtered seawater for up to 6 h before taxidermy of epi- and gastrodermis was conducted. All animals were ensured to have empty guts upon dissection and were washed thoroughly with sterile filtered seawater to remove non-associated microbes. Epi- and gastrodermis samples were attained by cutting approximately 1 × 1 cm of the respective

tissue out of the animals on sterile petri dishes using a sterile scalpel. Excised samples comprising epithelial tissue as well as mucus were transferred into reaction tubes and homogenized by use of sterile pipet tips for later DNA extraction resulting in isolation of 1 mL v/v samples from the outer epithelia and 200 µL v/v samples from the gastric cavity. Ambient seawater was collected from the sampling sites (5 to 11 replicates per site) by bucket sampling and 1L was subsequently and successively filtered through 10 µm isopore (TCPT 04700) membranes and 0.22 µm polyethersulfone (GPWP 04700) membrane filters (Millipore Corporation, Bedford, MA, United States). All samples were immediately frozen at −80°C until processing.

Nucleic Acid Isolation and 16S rRNA Gene Amplicon Sequencing

DNA was isolated from two different tissue types of *M. leidyi*, namely mucus and epidermis tissue samples from the outer epithelia (1 mL v/v) as well as tissue samples from the gastric cavity (pharynx: 200 µL v/v), and ambient seawater (from filters - 0.22 µm). DNA was isolated using the Wizard Genomic DNA Purification Kit (Promega, Madison, United States) according to the manufacturer's protocol. PCR amplification of the V1–V2 hypervariable region of the 16S rRNA gene was performed with primers V2_A_Pyro_27F (5'-CGTATCGCCTCCCTCGCGCCATCAGTCAGAGTTTGATCC TGGCTCAG-3') and V2_B_Pyro_27F (5'-CTATGCGCCTT GCCAGCCCCTCAGTCAGAGTTTGATCCTGGCTCAG-3'). Amplicons were size checked and purified using MinElute Gel Extraction Kit (Qiagen, Hilden, Germany). Purified amplicon DNAs were quantified using Quant-iT PicoGreen kit (Thermo Fisher Scientific, Waltham, United States) and equal amounts of purified PCR products were pooled for subsequent sequencing using the Illumina MiSeq platform with library preparation according to manufacturer's instructions at the Max-Planck Institute for Evolutionary Biology.

Data Processing and Bioinformatics

All steps of sequence processing were conducted with the program mothur v1.27.0 (Schloss et al., 2009). The Greengenes reference taxonomy (DeSantis et al., 2006), available on http://www.mothur.org/wiki/Greengenes-formatted_databases, was used with reference sequences trimmed to the V1–V2 hypervariable region of the 16S rRNA gene to improve accuracy of classification (Werner et al., 2012). The sequence depth of all 117 analyzed samples ranged from 23,622 to 675,908 single sequences. A random subset of 23,622 sequences per sample (corresponding to the smallest number of reads across samples) was generated to eliminate bias due to unequal sampling effort. The aligned dataset was used to compute a distance matrix (dist.seqs) for binning sequences into operational taxonomic units (OTU) by average neighbor clustering (cluster.split). 2,829 OTUs at a 97% similarity threshold (roughly corresponding to species level) distinction were considered. All downstream computations were performed in R v2.15.1 (R Core Team, 2012), following published protocols (Weiland-Bräuer et al., 2015). Briefly, the extent of change in OTU composition was explored

by beta diversity analysis in terms of redundancy analysis (RDA) with Hellinger-transformed OTU abundances (Benjamini and Hochberg, 1995; Langfeldt et al., 2014; Stratil et al., 2014). In general, the RDA model was formulated as “OTU abundances F” with factor F being either “provenance,” or “compartment.” Models were evaluated with the *vegan* function *rda*, followed by *anova.cca*, using 10,000 random permutations. Homoscedasticity was checked by using the *vegan* *betadisper* function, followed by *anova.betadisper* to assess significance. Upon determination of the significance ($P < 0.05$) of the overall model, pairwise factor-level combinations were tested for significance. OTUs significantly correlated with any axis in a significant RDA model were determined by using the *envfit* function with 105 permutations, followed by Benjamini-Hochberg correction.

Sequence data were submitted to the NCBI Sequence Read Archive under Accession No. PRJNA548849 and are additionally stored in a sequence data management system at the Institute of Clinical Molecular Biology (IKMB) at Kiel University, Germany.

Host Genotyping

Genomic DNA from *M. leidy* epithelia tissue samples, isolated with the Wizard Genomic DNA Purification Kit (Promega, Madison, United States), were used for genotype analyses. Sampled *M. leidy* representing different sub-populations were examined using 7 highly polymorphic microsatellite markers (Reusch et al., 2010). For genotyping, tissue was lysated in 100 μ L low TE buffer (10 mM Tris, 0.1 mM EDTA) for 1 h at 56°C, while shaking and 1 μ L extract used as template for the PCR reaction. Primer concentrations and PCR conditions followed published protocols (Reusch et al., 2010; Bolte et al., 2013; Jaspers et al., 2018). Amplified fragments were analyzed on an ABI 3130 genetic analyzer using Rox-350 (Applied Biosystems) as internal size standard. Allele sizes were scored using the software GENEMARKER v1.91 (SoftGenetics, LLC). Pairwise F_{ST} values were computed in ARLEQUIN v3.5.1.2 (Excoffier and Lischer, 2010) using non-parametric permutation procedures. All tests were performed with an initial alpha level of 0.05 and corrected following the Benjamini-Hochberg False Discovery Rate (B-H FDR) procedure (Benjamini and Yekutieli, 2001).

RESULTS

Taxonomic Composition of Ctenophore Associated Bacteria Shows Difference to Ambient Seawater

The microbiota associated with different epithelia (epi- and gastrodermis) and sub-populations of *M. leidy* as well as the bacterial communities of ambient water were analyzed by Illumina sequencing the hypervariable V1-V2 regions of the bacterial 16S rRNA gene. Sequence depths of 117 analyzed samples ranged between 23,622 to 675,908 single sequences. In total, 2,829 OTUs at a 97% similarity threshold (roughly corresponding to species level) were considered. Abundances of OTUs (97% sequence similarity) between individual samples are depicted at genus level in **Figure 1**. Consequently,

main representative bacterial classes in the samples were Alphaproteobacteria (e.g., including genera *Nautella*, uncl. Pelagibacteraceae, uncl. Rhodobacteraceae, *Octadecabacter*), Gammaproteobacteria (e.g., including genera *Marinomonas*, *Halomonas*, *Shewanella*), Mollicutes (e.g., including genera uncl. Entoplasmatales, *Mycoplasma*), Cyanobacteria (e.g., including genus *Synechococcus*) and Bacteroidia (e.g., including genus *Bacteroides*). While OTU abundances between the different sample types were significant, in the following the different comparisons are considered in more detail.

Significant Differences Between Associated Bacterial Communities of *M. leidy* and Ambient Seawater

Beta diversity analysis demonstrated that the associated bacterial communities of the ctenophore sub-populations were significantly different from the community compositions present in the corresponding ambient water (**Figure 2** and **Supplementary Table S1**). Water samples were mainly dominated by uncultured Pelagibacteraceae and uncultured Rhodobacteraceae of class Alphaproteobacteria, and *Synechococcus* of class Cyanobacteria, whereas the ctenophore tissues were mostly colonized by *Halomonas*, *Shewanella*, and *Marinomonas* of Gammaproteobacteria, and Mollicutes.

Tissue Variation of Ctenophore-Associated Bacteria

Sequencing results based on the 16S rRNA gene amplicon sequencing revealed differences in the bacterial composition among two different tissues, the outer mucus layer and epidermis, and the epithelium in the gastric cavity (**Figures 1, 2** and **Supplementary Table S1**). For all sub-populations, the tissues harbored a significantly different and specific microbiota ($P = 0.001$), except for the North Sea, where the microbiota composition differed only marginally ($P = 0.059$). Epidermis from native north-east animals (Atlantic, Massachusetts, United States) was dominated by *Marinomonas* and unclassified Pelagibacteraceae, whereas their gastric cavity was mainly colonized by *Shewanella*, *Mycoplasma*, and *Bacteroides*, unclassified Erythrobacteraceae and a multitude of low abundant OTUs. Both, epidermis and gastric cavity from native south-east animals (Atlantic, Florida, United States) were dominated by *Nautella*; epidermis additionally comprised unclassified Entoplasmatales, whereas gastric cavity was additionally colonized by unclassified Enterobacteriaceae, *Bacteroides* and *Arcobacter*. In comparison, epidermis and gastric samples of the invasive Mediterranean animals mostly comprised *Synechococcus*, while epidermis samples additionally contained unclassified Entoplasmatales and *Candidatus Aquiluna*, whereas gastric samples comprised *Halomonas*, *Shewanella*, and *Mycoplasma*, unclassified Erythrobacteraceae and *Bacteroides*. Main representatives in epidermis as well as gastric samples of invasive North Sea animals were *Halomonas*, *Shewanella*, and *Mycoplasma*, unclassified Enterobacteriaceae and *Bacteroides*. Epidermis and gastric cavity community patterns of those animals were almost similar, however, slight differences were

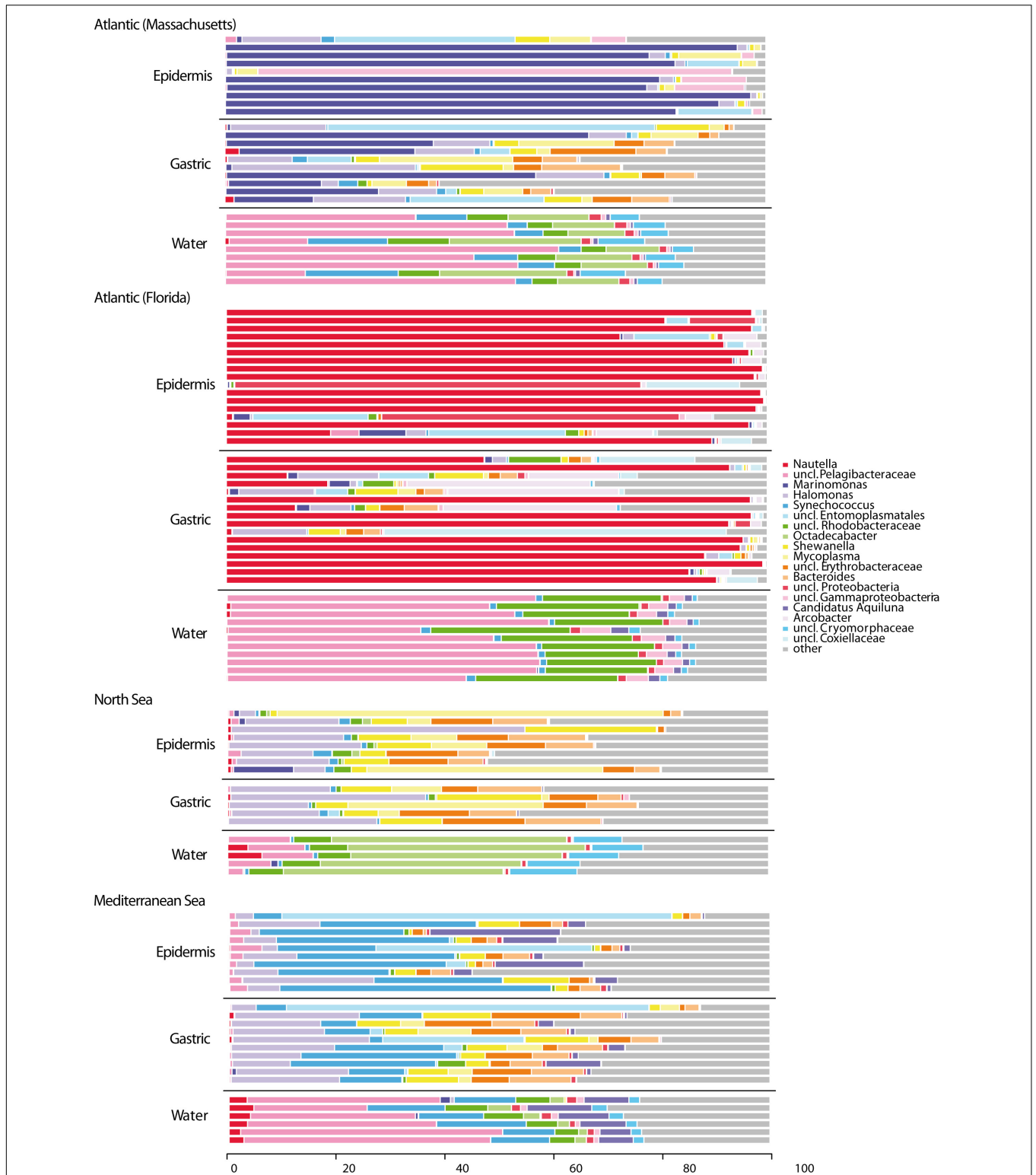
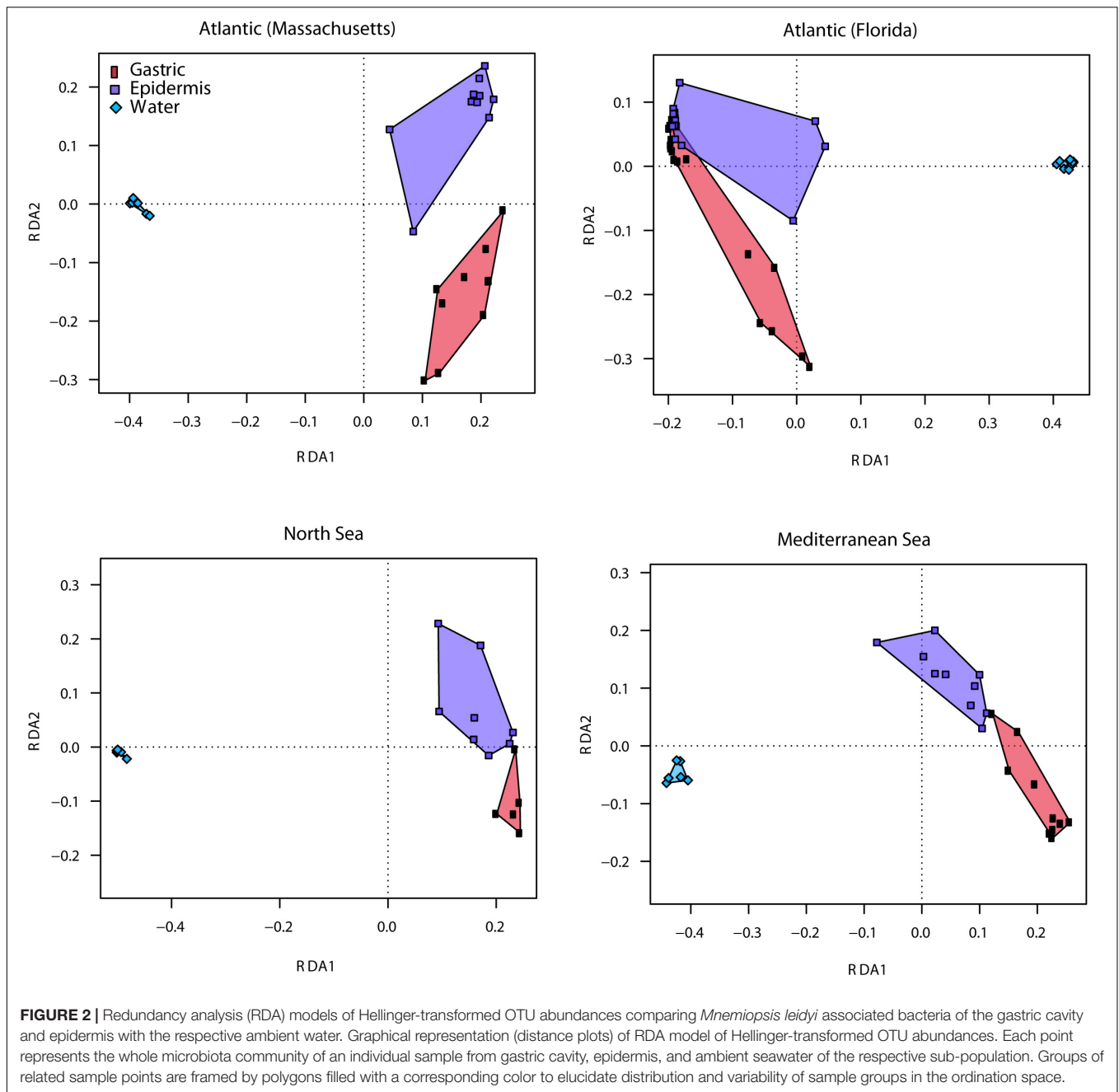


FIGURE 1 | Bacterial composition patterns of individual *Mnemiopsis leidyi* samples. Microbial communities associated with different epithelia of several sub-populations (native and invasive) of *M. leidyi* were analyzed by sequencing the V1-V2 hypervariable regions of the bacterial 16S rRNA gene. Taxonomic assemblages inferred from non-chimeric operational taxonomic units (OTUs) using mothur at a 97% pairwise similarity cut-off; distribution patterns were calculated using R. OTU abundances were summarized at genus level. Bar plots are grouped according to the sample type characteristic “provenance”, splitted into “epidermis”, “gastric” and “water” each including at least five replicates. Taxa with a mean relative abundance of <1% across all samples are subsumed under “other”.



observed in abundances of main representatives and presence of different low abundant taxa.

Sub-Population Specific Community Patterns of *M. leidyi*

Population structure analyses using the polymorphism of seven microsatellite loci revealed that all tested sub-populations were significantly differentiated (F_{ST} range 0.03 to 0.33; $P < 0.05$ after correction for multiple testing, **Table 1**). The largest observed population differentiation was found between the southern native sub-population (Atlantic, Florida, United States) and the

northern invasive sub-population (Helgoland, North Sea) with $F_{ST} = 0.333$ ($P < 0.0001$, see **Table 1**), while the smallest population difference was observed between native northern sub-populations (Atlantic, Massachusetts, United States) in comparison with their recently introduced counterparts in Northern Europe (Helgoland, North Sea) with $F_{ST} = 0.032$ ($P < 0.05$, **Table 1**). Based on the revealed genotyping of *M. leidyi*, bacterial community analysis of native northern (Atlantic, Massachusetts, United States) and southern (Atlantic, Florida, United States) as well as invasive (Mediterranean Sea and North Sea) *M. leidyi* sub-populations, bacterial community patterns where analyzed concerning ctenophore provenance (**Figure 3**

and **Supplementary Table S1**). RDA plots demonstrated that every single sub-population harbored a specific microbiota. Native sub-populations are significantly different and share just few OTUs. Invasive sub-populations shared a more similar microbiota and additionally were more similar to native northern sub-population animals (Atlantic, Massachusetts, United States), however, significantly different to native southern sub-population animals (Atlantic, Florida, United States) (**Figure 3**).

DISCUSSION

This is the first study comparing the microbiota of native and invasive sub-populations of the comb jelly *M. leidyi* using standardized high throughput amplicon sequencing methods based on the V1-V2 hypervariable region of the 16S rRNA gene. We demonstrated that the microbiota was significantly

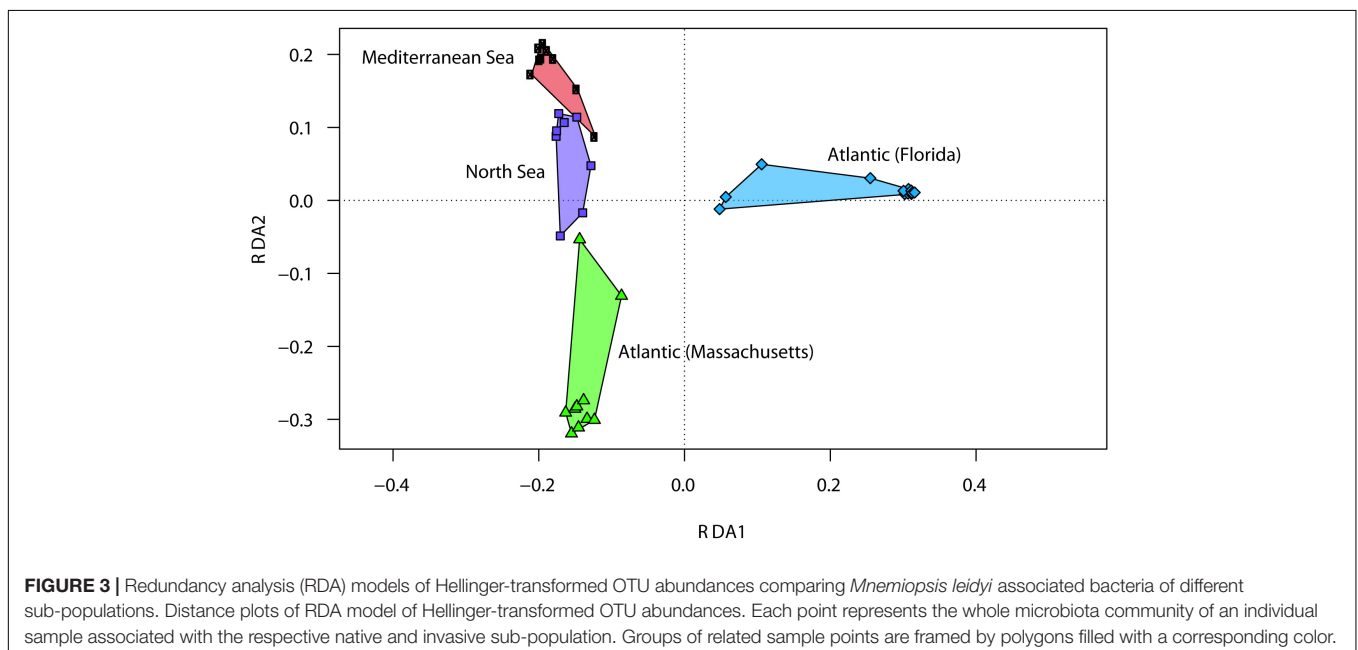
different from the surrounding seawater and specific to each analyzed sub-population. Contrary to the previous report of Hammann et al. (2015) describing that the outer surface of *M. leidyi* is free from associated microbes (Hammann et al., 2015), we observed a highly diverse microbiota on epithelial tissues. Additionally, and in line with Dinasquet et al. (2012), we detected different community patterns on the outer surface of the animals compared to the gastric cavity. Two published studies (Dinasquet et al., 2012; Hao et al., 2015) dealing with microbiota patterns of invasive *M. leidyi* observed that the core microbiome of *M. leidyi* is host-specific and main representatives were identified belonging to Gamma- and Alphaproteobacteria as well as Bacteroidetes with *Marinomonas* spp. (Gammaproteobacteria) as one abundant and most likely important colonizer. However, further work is needed to assess the functional roles of such ctenophore-associated microbes.

Our multivariate analyses indicated that native and invasive northern sub-populations are more similar compared with southern native and invasive sub-populations. For northern native sub-populations, *Marinomonas* spp. dominated the bacterial community. However, for invasive northern sub-populations, this species was only observed with a limited contribution to the microbiome of *M. leidyi* sampled during summer 2012. This is in contrast to previous findings, where during the years 2009/2010 *Marinomonas* spp. had been documented to be the most abundant bacterial species on *M. leidyi* from the invasive northern sub-population, i.e., Helgoland Road (Hao et al., 2015) and the Gulmar Fjord (Dinasquet et al., 2012). A change in the bacterial community composition with reduced contribution of *Marinomonas* spp. could be related to a significant change in winter conditions as observed during the early 2010s, where a series of cold winters had led to a retraction of the range expansion of *M. leidyi* in northern Europe with the extinction of *M. leidyi* in, e.g.,

TABLE 1 | Pairwise comparison of genetic differentiation (F_{ST}) between native and invasive *Mnemiopsis leidyi* sub-populations using highly polymorphic microsatellite markers.

	MS	FL	WH	HE
MS	–			
FL	0.078***	–		
WH	0.277***	0.157***	–	
HE	0.333***	0.205***	0.032*	–

The four tested sub-populations are abbreviated with southern native, FL (Florida, United States, south-east Atlantic coast); northern native, WH (Woods Hole, Massachusetts, United States, north-east Atlantic coast); southern invasive, MS (Marseille, France, north-east Mediterranean Sea); and northern invasive, HE (Helgoland, German Bight, North Sea). Significant comparisons are highlighted in bold with P-levels abbreviated by * $P < 0.05$ and *** $P < 0.0001$ (P-values corrected for multiple testing).



the Gulmar Fjord (Jaspers et al., 2018). Hence, drastic physical conditions and extinction of local sub-populations could be reflected in a change of the microbiome, but deserve further investigation. It has been shown that the microbiome changes with season in southern native and northern invasive *M. leidy* sub-populations (Daniels and Breitbart, 2012; Hao et al., 2015). In this study, we do not expect that seasonal differences impact the general conclusions of our study as all regions were sampled during the same seasonal time point.

In addition to the comparison of the microbiota on the comb jelly with the ambient water as well as between outer surface and gastric cavity, to the best of our knowledge, this is the first study focusing on the comparison between native and invasive *M. leidy*. Therefore, our results are an essential first step to assess the impact of microbiota on the invasion process by describing basic diversity pattern.

A recent study investigating the microbiota of *M. leidy* in comparison with other ctenophore species from the same environment documented significant difference between the microbiome of all studied ctenophore species (Hao et al., 2015). All investigated *M. leidy* microbiomes were dominated by Proteobacteria, though variable through time (Hao et al., 2015). Our deep sequencing approach revealed that the native southern sub-population showed a large difference of the microbiota when compared to the invasive southern sub-population. Specifically, the native southern microbiome of *M. leidy* was dominated by *Nautella* (Alphaproteobacteria), while this genus was absent from the corresponding invasive *M. leidy* sub-population. In line with this, southern invasive and native *M. leidy* sub-populations have also been differentiated for the longest time (Jaspers et al., 2018), which might explain the difference in their respective microbial community. Similar to our results, in a previous study, Alphaproteobacteria had been shown to be key bacterial community members of *M. leidy* from the native southern range in the Gulf of Mexico during late spring and summer (Daniels and Breitbart, 2012). For the Mediterranean Sea, no previous microbiome characterization has been conducted. In our sequence data, we observed a large proportion of the Cyanobacteria species *Synechococcus* in epidermis as well as gastric samples. Even though this is a free living bacterium with a widespread distribution in marine and freshwater systems, Cyanobacteria have also been shown to contribute to the core microbiome of native southern *M. leidy* during certain periods (Daniels and Breitbart, 2012) and might be more abundant during summer when they bloom in ocean surface waters (Wang et al., 2011).

Weiland-Bräuer et al. (2015) showed significant differences in the microbiota associated to the polyp stage of the moon jellyfish *Aurelia aurita* among three source populations that were cultured for more than 10 years under similar artificial lab conditions. In the present study, we found the lowest host population differentiation between native north-east United States sub-population (Atlantic, Massachusetts, United States) and the invasive northern sub-population (Helgoland, North Sea). These host population structure results are in agreement with molecular results (Reusch et al., 2010). In detail, a recent investigation summarizing the range expansion of *M. leidy*

in western Eurasia has shown that the northern introduction of *M. leidy* is very recent and dates back to 2005 (Jaspers et al., 2018). Hence, genetic background along with time since first introduction has an impact on microbiome evolution. We further showed that analyzed invasive sub-populations, in general, share a more similar microbiota, most likely due to a more similar environment they share, disclosing the impact of the environment. Moreover, we observed that the microbiota of those invasive *M. leidy* sub-populations is more similar to the northern native sub-population from Massachusetts than to the southern native sub-population from Florida. We hypothesize that the observed microbiota reflects the invasion process of *M. leidy*, since the southern invasive sub-population has been introduced from the southern native sub-population in the 1980's, while the northern sub-population present in European waters has been introduced from the north-east United States coast during the early 2000's as reviewed in Jaspers et al. (2018). Further common garden experiments have to be performed in the future to confirm this hypothesis.

In conclusion, significant variance in microbial community patterns and significant population differences between sub-populations suggest an impact of environment along with the genetic host background (host population affiliation) on the microbiota. Long-term experiments over several generations under controlled conditions are necessary to partition the influence of the environment from population affiliation and genotype of the animals. We found that *M. leidy* harbors a diverse microbiota on its epithelia. The significant difference between water and the microbiota suggests that ctenophores might select the microbes in a host-specific way, thereby shaping the entire metaorganism. The direct interactions between microbes and host need to be studied in controlled environments to gain insights into the impact of the associated microbiota on the fitness and invasion success of the ctenophore *M. leidy*.

DATA AVAILABILITY STATEMENT

Sequence data were submitted to the NCBI Sequence Read Archive under Accession No. PRJNA548849 and are additionally stored in a sequence data management system at the Institute of Clinical Molecular Biology (IKMB) at Kiel University, Germany.

AUTHOR CONTRIBUTIONS

CJ, NW-B, RS, and TR: conceptualization. CJ, NW-B, and SK: sample analyses. MF with support from NW-B: bioinformatic analyses. CJ with support from TR: genotyping and analyses. CJ and NW-B with support from MF, SK, RS, and TR: manuscript drafting. All authors read and approved the final version of the manuscript draft.

FUNDING

This study received financial support from the Collaborative Research Center (CRC) 1182 "Origin and Function of

Metaorganisms” to TR and RS, funded through the German Research Foundation (DFG, Re1108/17-1).

ACKNOWLEDGMENTS

We thank Sören Bolte for support and data collection, Katharina Bading for collection of animals in the native southern range, and Nicole Pinnow for experimental support. This manuscript has

been released as a Pre-Print at <https://www.biorxiv.org/content/10.1101/601419v1>.

SUPPLEMENTARY MATERIAL

The Supplementary Material for this article can be found online at: <https://www.frontiersin.org/articles/10.3389/fmars.2019.00635/full#supplementary-material>

REFERENCES

- Alegado, R. A., Brown, L. W., Cao, S. G., Dermencian, R. K., Zuzow, R., Fairclough, S. R., et al. (2012). A bacterial sulfonolipid triggers multicellular development in the closest living relatives of animals. *eLife* 1:e00013. doi: 10.7554/eLife.00013
- Bayha, K. M., DeBoer, T. S., Harbison, G. R., Chang, M. H., Moseley, C., Mariani, C. L., et al. (2015). Worldwide phylogeography of the invasive ctenophore *Mnemiopsis leidyi* (Ctenophora) based on nuclear and mitochondrial DNA data. *Biol. Invasions* 17, 827–850. doi: 10.1007/s10530-014-0770-6
- Benjamini, Y., and Hochberg, Y. (1995). Controlling the false discovery rate: a practical and powerful approach to multiple testing. *J. R. Stat. Soc. Ser. B* 57, 289–300. doi: 10.1111/j.2517-6161.1995.tb02031.x
- Benjamini, Y., and Yekutieli, D. (2001). The control of the false discovery rate in multiple testing under dependency. *Ann. Stat.* 29, 1165–1188. doi: 10.1186/1471-2105-9-114
- Bolte, S., Fuentes, V., Haslob, H., Huwer, B., Thibault-Botha, D., Angel, D., et al. (2013). Population genetics of the invasive ctenophore *Mnemiopsis leidyi* in Europe reveal source-sink dynamics and secondary dispersal to the Mediterranean Sea. *Mar. Ecol. Prog. Ser.* 485, 25–36. doi: 10.3354/meps10321
- Bosch, T. C. G., and McFall-Ngai, M. J. (2011). Metaorganisms as the new frontier. *Zoology* 114, 185–190. doi: 10.1016/j.zool.2011.04.001
- R Core Team (2012). *R: A Language and Environment for Statistical Computing*. Vienna: R Foundation for Statistical Computing.
- Daniels, C., and Breitbart, M. (2012). Bacterial communities associated with the ctenophores *Mnemiopsis leidyi* and *Beroë ovata*. *FEMS Microbiol. Ecol.* 82, 90–101. doi: 10.1111/j.1574-6941.2012.01409.x
- DeSantis, T. Z., Hugenholtz, P., Larsen, N., Rojas, M., Brodie, E. L., Keller, K., et al. (2006). Greengenes, a chimera-checked 16S rRNA gene database and workbench compatible with ARB. *Appl. Environ. Microbiol.* 72, 5069–5072. doi: 10.1128/aem.03006-05
- Dinasquet, J., Granhag, L., and Riemann, L. (2012). Stimulated bacterioplankton growth and selection for certain bacterial taxa in the vicinity of the ctenophore *Mnemiopsis leidyi*. *Front. Microbiol.* 3:302. doi: 10.3389/fmicb.2012.00302
- Dunn, C. W., Hejnal, A., Matus, D. Q., Pang, K., Browne, W. E., Smith, S. A., et al. (2008). Broad phylogenomic sampling improves resolution of the animal tree of life. *Nature* 452, 745–749. doi: 10.1038/nature06614
- Excoffier, L., and Lischer, H. E. L. (2010). Arlequin suite ver 3.5: a new series of programs to perform population genetics analyses under Linux and Windows. *Mol. Ecol. Resour.* 10, 564–567. doi: 10.1111/j.1755-0998.2010.02847.x
- Hammann, S., Moss, A. G., and Zimmer, M. (2015). Sterile surfaces of *Mnemiopsis leidyi* (Ctenophora) in bacterial suspension - a key to invasion success? *Open J. Mar. Sci.* 5, 237–246. doi: 10.4236/ojms.2015.52019
- Hao, W., Gerdtz, G., Peplies, J., and Wichels, A. (2015). Bacterial communities associated with four ctenophore genera from the German Bight (North Sea). *FEMS Microbiol. Ecol.* 91, 1–11. doi: 10.1093/femsec/fiu006
- Jaspers, C., Fraune, S., Arnold, A. E., Miller, D. J., Bosch, T. C. G., and Voolstra, C. R. (2019a). Resolving structure and function of metaorganisms through a holistic framework combining reductionist and integrative approaches. *Zoology* 133, 81–87. doi: 10.1016/j.zool.2019.02.007
- Jaspers, C., Weiland-Bräuer, N., Fischer, M., Künzel, S., Schmitz, R. A., and Reusch, T. B. H. (2019b). Microbiota differences of the comb jelly *Mnemiopsis leidyi* in native and invasive sub-populations. *bioRxiv* 601419.
- Jaspers, C., Huwer, B., Antajan, E., Hosia, A., Hinrichsen, H.-H., Biastoch, A., et al. (2018). Ocean current connectivity propelling the secondary spread of a marine invasive comb jelly across western Eurasia. *Global Ecol. Biogeogr.* 27, 814–827. doi: 10.1111/geb.12742
- Kideys, A. E. (2002). Fall and rise of the Black Sea ecosystem. *Science* 297, 1482–1484. doi: 10.1126/science.1073002
- Langfeldt, D., Neulinger, S. C., Heuer, W., Staufienbiel, I., Künzel, S., Baines, J. F., et al. (2014). Composition of microbial oral biofilms during maturation in young healthy adults. *PLoS One* 9:e87449. doi: 10.1371/journal.pone.0087449
- Neumann, R. (1979). Bacterial induction of settlement and metamorphosis in the planula larvae of larvae of *Cassiopea andromeda* (Cnidaria, Scyphozoa, Rhizostomeae). *Mar. Ecol. Prog. Ser.* 1, 21–28. doi: 10.3354/meps001021
- Reusch, T. B. H., Bolte, S., Sparwel, M., Moss, A. G., and Javidpour, J. (2010). Microsatellites reveal origin and genetic diversity of Eurasian invasions by one of the world's most notorious marine invader, *Mnemiopsis leidyi* (Ctenophora). *Mol. Ecol.* 19, 2690–2699. doi: 10.1111/j.1365-294X.2010.04701.x
- Rook, G., Bakhed, F., Levin, B. R., McFall-Ngai, M. J., and McLean, A. R. (2017). Evolution, human-microbe interactions, and life history plasticity. *Lancet* 390, 521–530. doi: 10.1016/S0140-6736(17)30566-4
- Schloss, P. D., Westcott, S. L., Ryabin, T., Hall, J. R., Hartmann, M., Hollister, E. B., et al. (2009). Introducing mothur: open-source, platform-independent, community-supported software for describing and comparing microbial communities. *Appl. Environ. Microbiol.* 75, 7537–7541. doi: 10.1128/AEM.01541-09
- Stratil, S. B., Neulinger, S. C., Knecht, H., Friedrichs, A. K., and Wahl, M. (2014). Salinity affects compositional traits of epibacterial communities on the brown macroalga *Fucus vesiculosus*. *FEMS Microbiol. Ecol.* 88, 272–279. doi: 10.1111/1574-6941.12292
- Tebben, J., Tapiolas, D. M., Motti, C. A., Abrego, D., Negri, A. P., Blackall, L. L., et al. (2011). Induction of larval metamorphosis of the coral *Acropora millepora* by tetrabromopyrrole isolated from a *Pseudoalteromonas* bacterium. *PLoS One* 6:e19082. doi: 10.1371/journal.pone.0019082
- Tiselius, P., and Möller, E. F. (2017). Community cascades in a marine pelagic food web controlled by the non-visual apex predator *Mnemiopsis leidyi*. *J. Plankton Res.* 39, 271–279.
- Wang, K., Wommack, K. E., and Chen, F. (2011). Abundance and distribution of *Synechococcus* spp. and Cyanophages in the Chesapeake Bay. *Appl. Environ. Microbiol.* 77, 7459–7468. doi: 10.1128/AEM.00267-11
- Weiland-Bräuer, N., Neulinger, S. C., Pinnow, N., Künzel, S., Baines, J. F., and Schmitz, R. A. (2015). Composition of bacterial communities associated with *Aurelia aurita* changes with compartment, life stage, and population. *Appl. Environ. Microbiol.* 81, 6038–6052. doi: 10.1128/AEM.01601-15

- Werner, J. J., Koren, O., Hugenholtz, P., DeSantis, T. Z., Walters, W. A., Caporaso, J. G., et al. (2012). Impact of training sets on classification of high-throughput bacterial 16s rRNA gene surveys. *ISME J.* 6, 94–103. doi: 10.1038/ismej.2011.82
- Whelan, N. V., Kocot, K. M., Moroz, T. P., Mukherjee, K., Williams, P., Paulay, G., et al. (2017). Ctenophore relationships and their placement as the sister group to all other animals. *Nat. Ecol. Evol.* 1, 1737–1746. doi: 10.1038/s41559-017-0331-3
- Woznica, A., Gerdt, J. P., Hulett, R. E., Clardy, J., and King, N. (2017). Mating in the closest living relatives of animals is induced by a bacterial chondroitinase. *Cell* 170, 1175–1183. doi: 10.1016/j.cell.2017.08.005

Conflict of Interest: The authors declare that the research was conducted in the absence of any commercial or financial relationships that could be construed as a potential conflict of interest.

Copyright © 2019 Jaspers, Weiland-Bräuer, Fischer, Künzel, Schmitz and Reusch. This is an open-access article distributed under the terms of the Creative Commons Attribution License (CC BY). The use, distribution or reproduction in other forums is permitted, provided the original author(s) and the copyright owner(s) are credited and that the original publication in this journal is cited, in accordance with accepted academic practice. No use, distribution or reproduction is permitted which does not comply with these terms.